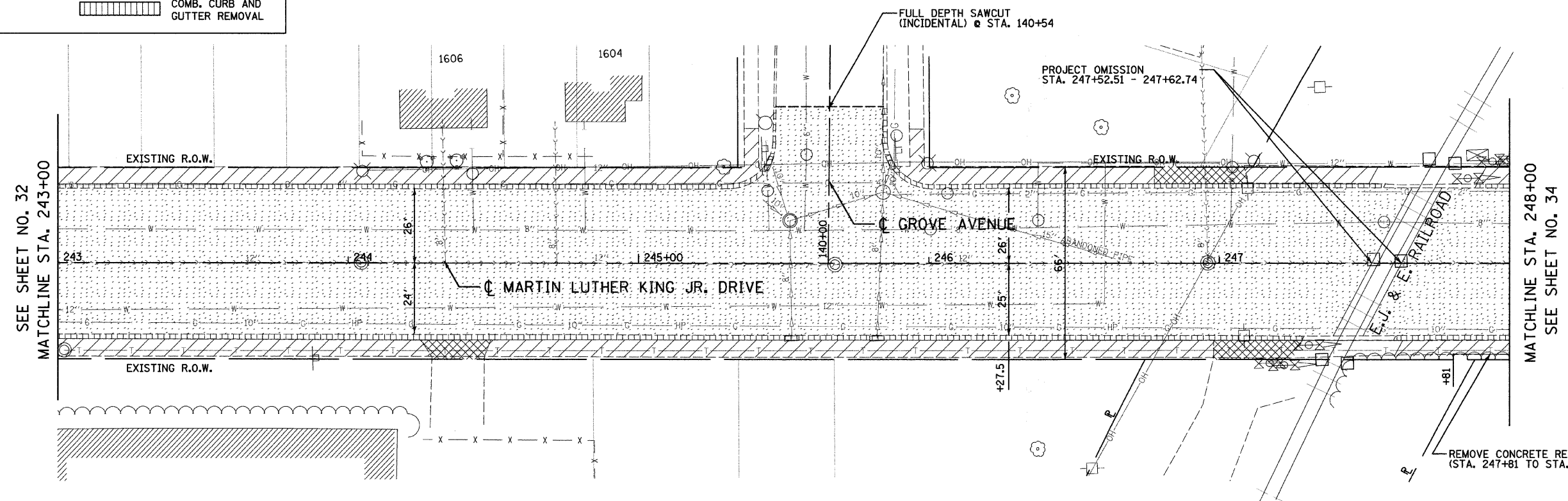


LEGEND

	DRIVEWAY PAVEMENT REMOVAL		SIDEWALK REMOVAL
	PAVEMENT REMOVAL		COMB. CURB AND GUTTER REMOVAL

F.A.U. RTE.	SECTION	COUNTY	TOTAL SHEETS	SHEET NO.
1230	03-00159-00-PV	LAKE	262	33
STA. 243+00		TO STA. 248+00		
FED. ROAD DIST. NO. 1		ILLINOIS	FED. AID PROJECT	

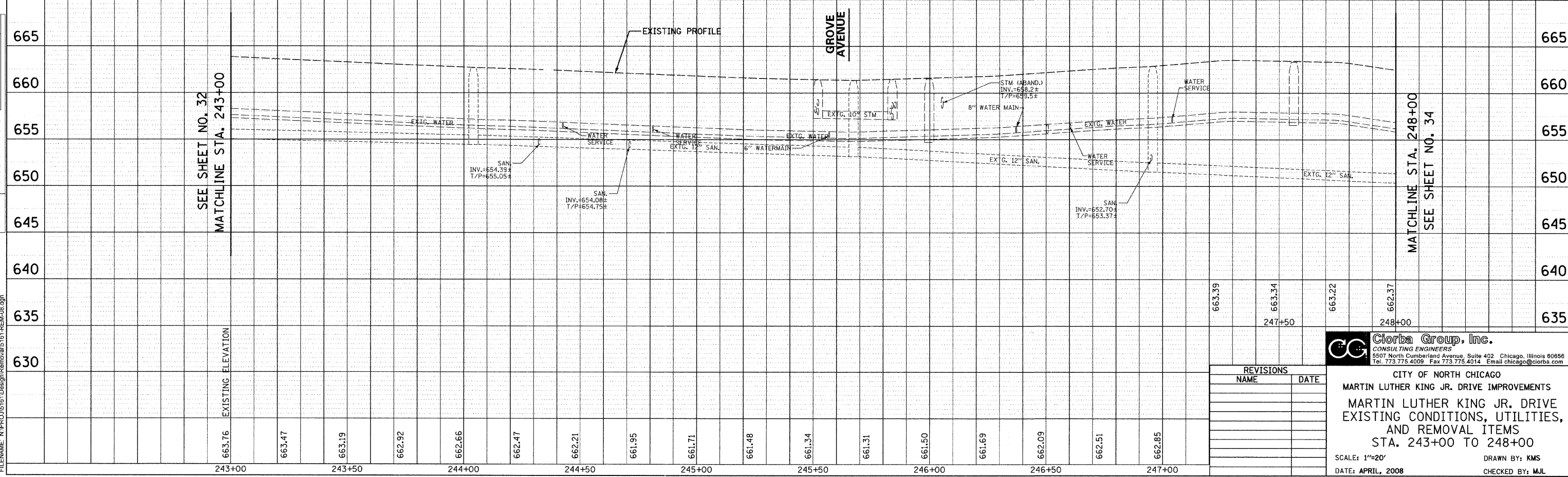
CONTRACT: 83828



SEE SHEET NO. 32
MATCHLINE STA. 243+00

MATCHLINE STA. 248+00
SEE SHEET NO. 34

REMOVE CONCRETE RETAINING WALL AND HANDRAIL (STA. 247+81 TO STA. 248+62)



SEE SHEET NO. 32
MATCHLINE STA. 243+00

MATCHLINE STA. 248+00
SEE SHEET NO. 34

EXISTING ELEVATION

REVISIONS	
NAME	DATE

Clorba Group, Inc.
CONSULTING ENGINEERS
5507 North Cumberland Avenue Suite 402 Chicago, Illinois 60656
Tel. 773.775.4009 Fax 773.775.4014 Email chicago@clorba.com

CITY OF NORTH CHICAGO
MARTIN LUTHER KING JR. DRIVE IMPROVEMENTS
MARTIN LUTHER KING JR. DRIVE
EXISTING CONDITIONS, UTILITIES,
AND REMOVAL ITEMS
STA. 243+00 TO 248+00

SCALE: 1"=20'
DATE: APRIL, 2008
DRAWN BY: KMS
CHECKED BY: MJL

PLAN	DATE	BY

PROFILE	DATE	BY

DATE: 6/26/08
TIME: 10:22 AM
FILENAME: N:\PROJ\05161\Design\Removal\5161-REM-08.dgn