

F.A.U. RTE.	SECTION	COUNTY	TOTAL SHEETS	SHEET NO.
1230	03-00159-00-PV	LAKE	262	35
STA. 254+00		TO STA. 260+00		
FED. ROAD DIST. NO. 1		ILLINOIS		FED. AID PROJECT
CONTRACT: 83828				

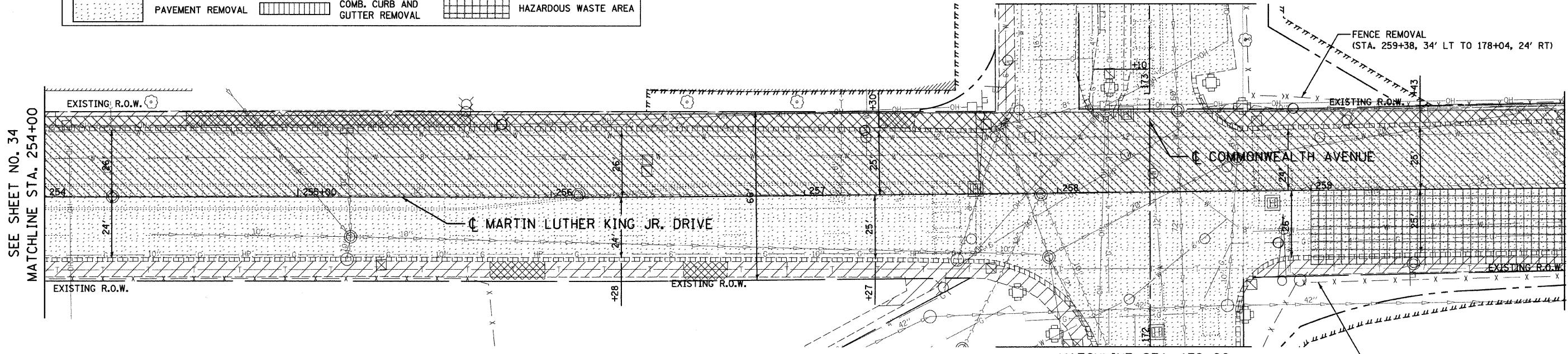
LEGEND

	DRIVEWAY PAVEMENT REMOVAL		SIDEWALK REMOVAL		SPECIAL WASTE AREA
	PAVEMENT REMOVAL		COMB. CURB AND GUTTER REMOVAL		HAZARDOUS WASTE AREA

SEE SHEET NO.40
MATCHLINE STA. 173+35

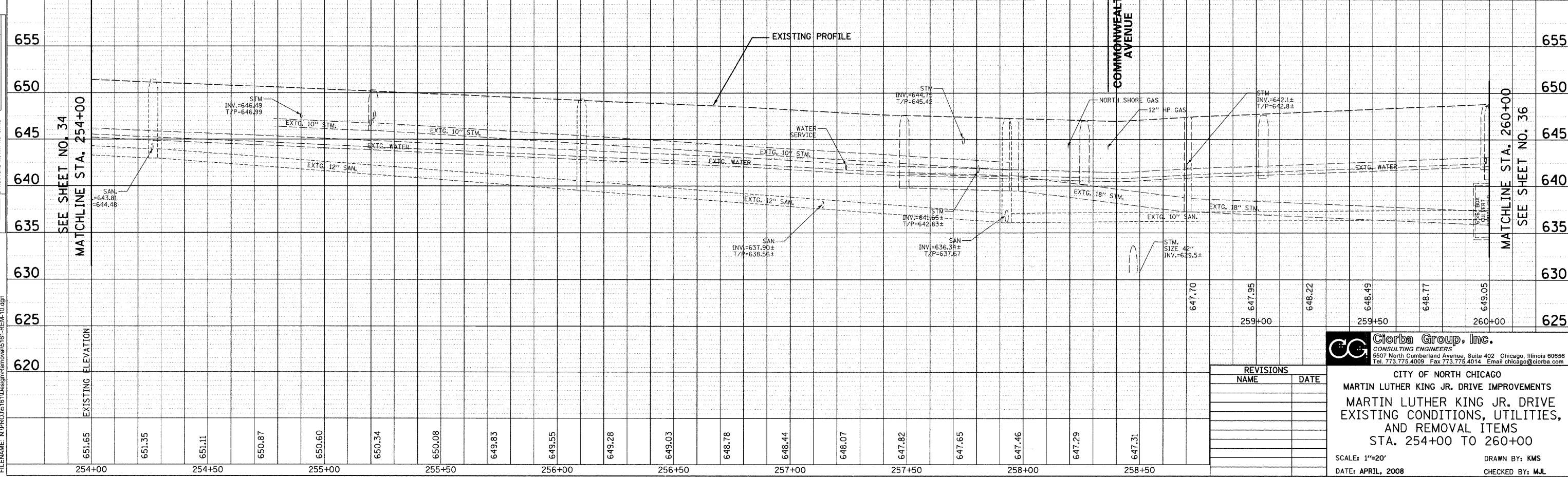
SEE SHEET NO. 34
MATCHLINE STA. 254+00

MATCHLINE STA. 260+00
SEE SHEET NO. 36



MATCHLINE STA. 172+00
SEE SHEET NO. 39

FENCE REMOVAL
(STA. 171+84, 38' RT TO 262+91, 33' RT)



PLAN	DATE
BY	
NO.	
FILE NAME	

PROFILE	DATE
BY	
NO.	
FILE NAME	

DATE: 6/30/2008
DRAWN BY: M
FILE NAME: N:\PROJ\5161\Design\Removal\5161-REM-10.dgn

REVISIONS	
NAME	DATE

Clorba Group, Inc.
CONSULTING ENGINEERS
5507 North Cumberland Avenue, Suite 402 Chicago, Illinois 60656
Tel. 773.775.4009 Fax 773.775.4014 Email chicago@clorba.com

CITY OF NORTH CHICAGO
MARTIN LUTHER KING JR. DRIVE IMPROVEMENTS
MARTIN LUTHER KING JR. DRIVE
EXISTING CONDITIONS, UTILITIES,
AND REMOVAL ITEMS
STA. 254+00 TO 260+00

SCALE: 1"=20'
DATE: APRIL, 2008

DRAWN BY: KMS
CHECKED BY: MJL