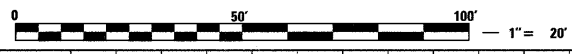
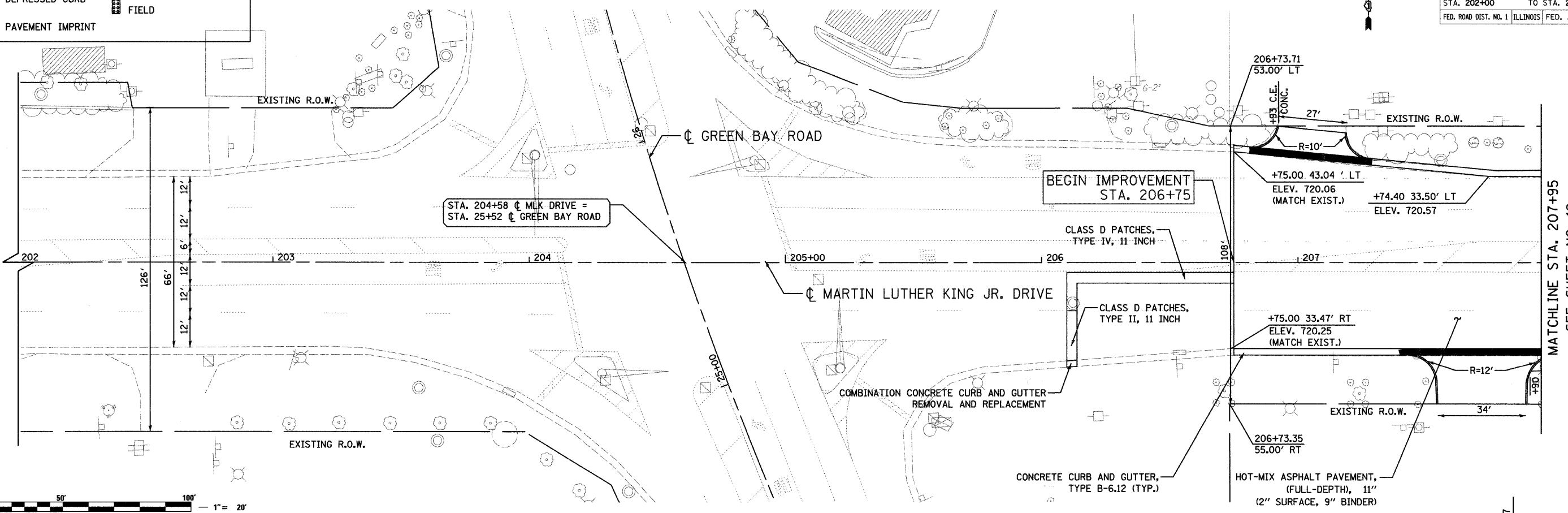


F.A.U. RTE.	SECTION	COUNTY	TOTAL SHEETS	SHEET NO.
1230	03-00159-00-PV	LAKE	262	41
STA. 202+00		TO STA. 207+95		
FED. ROAD DIST. NO. 1		ILLINOIS	FED. AID PROJECT	

CONTRACT: 83828

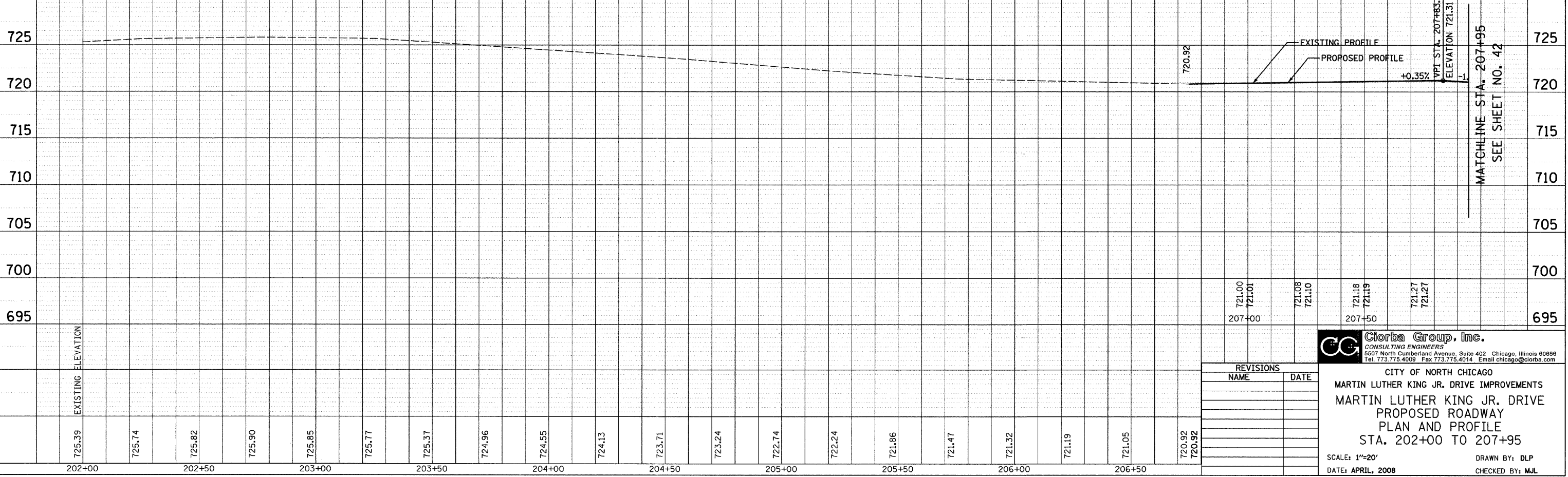
**LEGEND**

	DEPRESSED CURB		DETECTABLE WARNING FIELD
	PAVEMENT IMPRINT		



PLAN	SURVEYED	DATE
	BY	
	DATE	
	BY	
	DATE	
	BY	
	DATE	

PROFILE	SURVEYED	DATE
	BY	
	DATE	
	BY	
	DATE	
	BY	
	DATE	



DATE: 8/20/08  
 TIME: 10:30 AM  
 FILENAME: N:\PROJ\516\Design\ProposedPlan\516-LPNP-01.dgn

REVISIONS	
NAME	DATE

**Clorba Group, Inc.**  
 CONSULTING ENGINEERS  
 5507 North Cumberland Avenue, Suite 402 Chicago, Illinois 60656  
 Tel: 773.775.4009 Fax: 773.775.4014 Email: chicago@clorba.com

CITY OF NORTH CHICAGO  
 MARTIN LUTHER KING JR. DRIVE IMPROVEMENTS  
 MARTIN LUTHER KING JR. DRIVE  
 PROPOSED ROADWAY  
 PLAN AND PROFILE  
 STA. 202+00 TO 207+95

SCALE: 1"=20'  
 DATE: APRIL, 2008

DRAWN BY: DLP  
 CHECKED BY: M.JL

MATCHLINE STA. 207+95  
SEE SHEET NO. 42