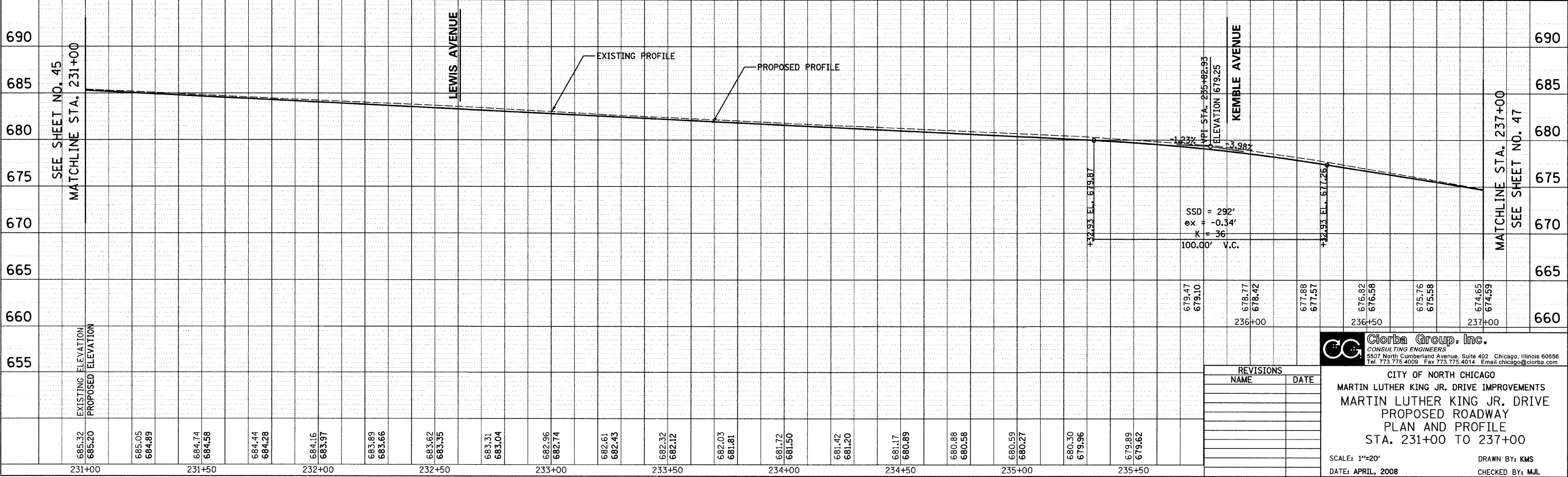
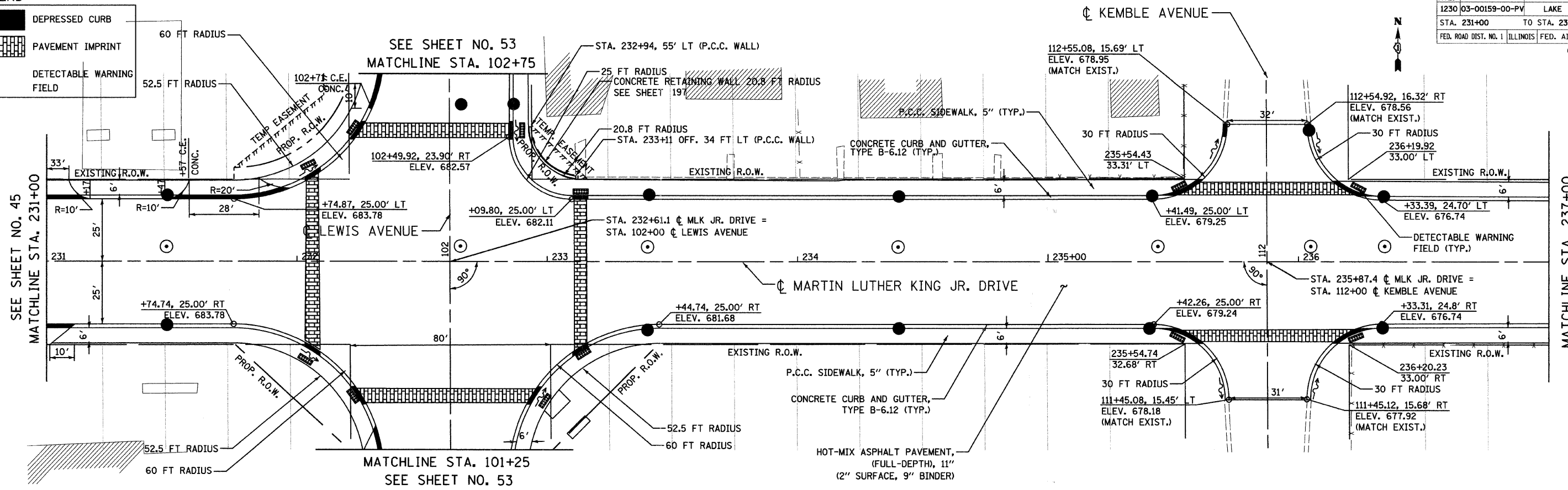


LEGEND

- DEPRESSED CURB
- PAVEMENT IMPRINT
- DETECTABLE WARNING FIELD

F.A.U. RTE.	SECTION	COUNTY	TOTAL SHEETS	SHEET NO.
1230	03-00159-00-PV	LAKE	262	46
STA. 231+00		TO STA. 237+00		
FED. ROAD DIST. NO. 1		ILLINOIS FED. AID PROJECT		
CONTRACT: 83828				



DATE	BY
REVISIONS	
NO.	
DATE	BY
REVISIONS	
NO.	
DATE	BY

DATE	BY
REVISIONS	
NO.	
DATE	BY
REVISIONS	
NO.	
DATE	BY

DATE: 6/30/2008
 TIME: 3:37:00 PM
 FILENAME: N:\PROJECTS\161\Design\ProposedPlans\161-PNP-08.dgn

Clorba Group, Inc.
 CONSULTING ENGINEERS
 5507 North Cumberland Avenue, Suite 402 Chicago, Illinois 60656
 Tel. 773.775.4009 Fax 773.775.4014 Email chicago@clorba.com

CITY OF NORTH CHICAGO
 MARTIN LUTHER KING JR. DRIVE IMPROVEMENTS
 MARTIN LUTHER KING JR. DRIVE
 PROPOSED ROADWAY
 PLAN AND PROFILE
 STA. 231+00 TO 237+00

SCALE: 1"=20'
 DATE: APRIL, 2008
 DRAWN BY: KMS
 CHECKED BY: MJL