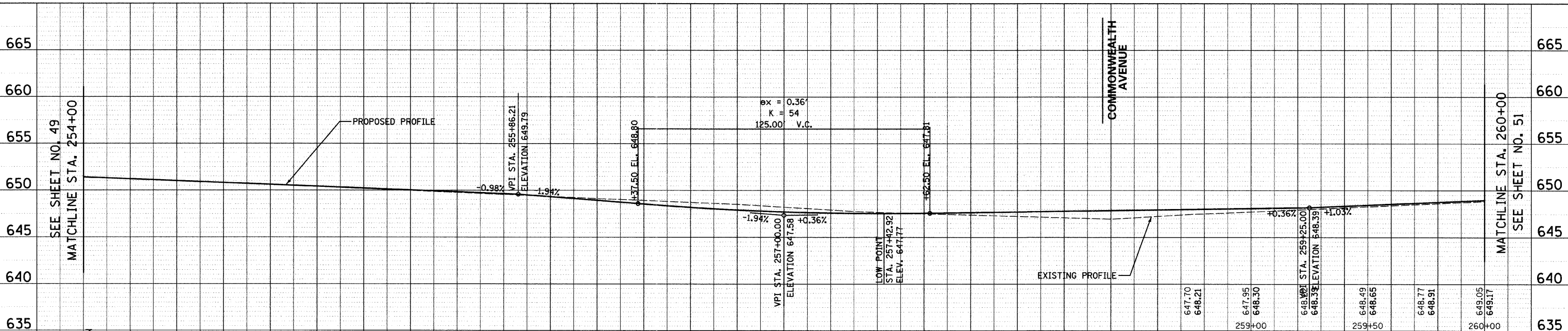
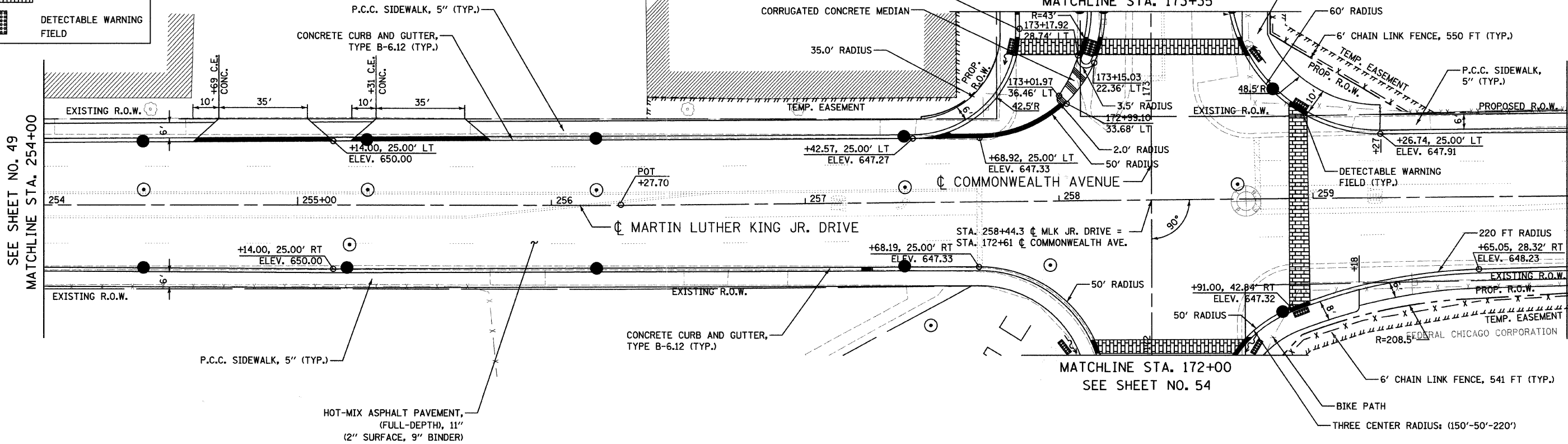
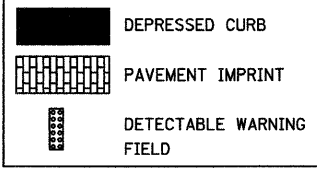


**LEGEND**



DATE	BY
DATE	BY
DATE	BY

DATE	BY
DATE	BY
DATE	BY

DATE: 6/30/2008  
 TIME: 3:37:54 PM  
 FILENAME: N:\PROJ\05161\Design\ProposedPlan\5161-PNP-10.dgn

EXISTING ELEVATION	PROPOSED ELEVATION
651.65	651.62
651.35	651.37
651.11	651.13
650.87	650.88
650.60	650.64
650.34	650.39
650.08	650.15
649.83	649.90
649.55	649.52
649.28	649.04
649.03	648.57
648.78	648.20
648.44	647.94
648.07	647.80
647.82	647.78
647.65	647.85
647.46	647.94
647.29	648.03
647.31	648.12

REVISIONS	
NAME	DATE

**Clorba Group, Inc.**  
 CONSULTING ENGINEERS  
 5507 North Cumberland Avenue, Suite 402 Chicago, Illinois 60656  
 Tel. 773.775.4009 Fax 773.775.4014 Email: chicago@clorba.com

CITY OF NORTH CHICAGO  
 MARTIN LUTHER KING JR. DRIVE IMPROVEMENTS  
 MARTIN LUTHER KING JR. DRIVE  
 PROPOSED ROADWAY  
 PLAN AND PROFILE  
 STA. 254+00 TO 260+00

SCALE: 1"=20'  
 DATE: APRIL, 2008  
 DRAWN BY: KMS  
 CHECKED BY: MJL