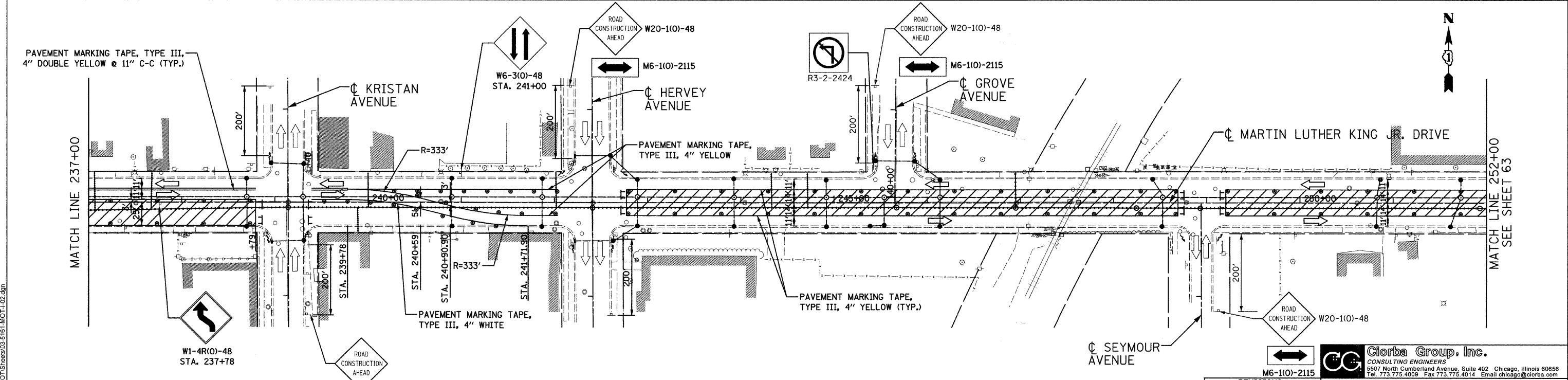
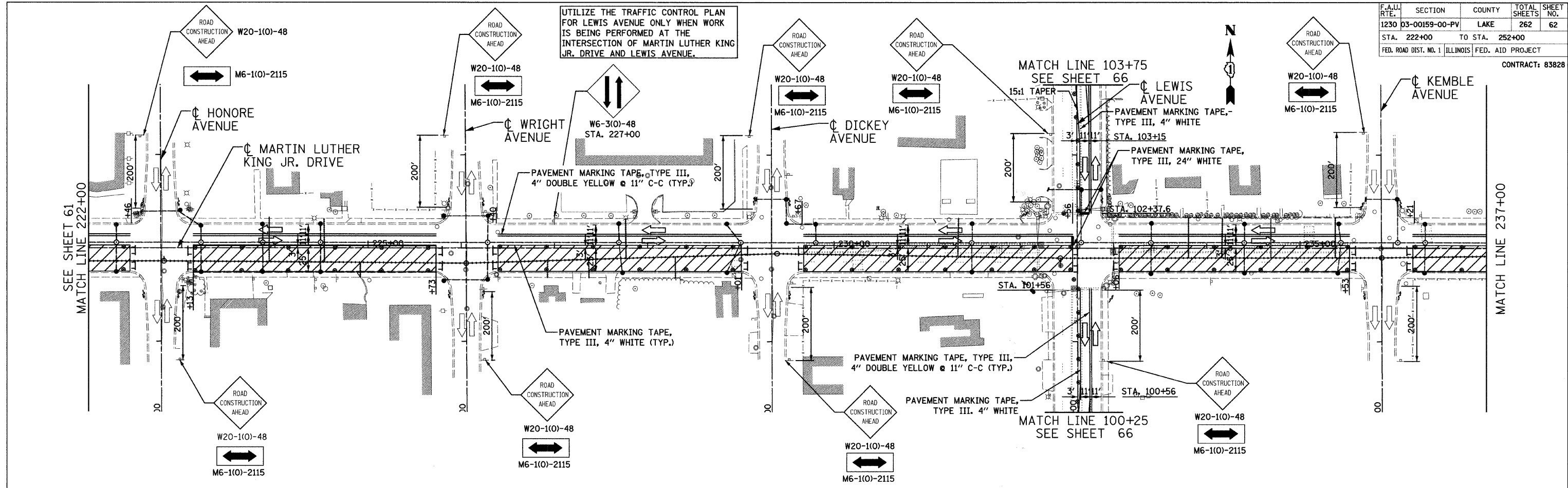


F.A.U. RTE.	SECTION	COUNTY	TOTAL SHEETS	SHEET NO.
1230	03-00159-00-PV	LAKE	262	62
STA. 222+00	TO STA. 252+00			
FED. ROAD DIST. NO. 1		ILLINOIS	FED. AID PROJECT	
CONTRACT: 83828				



DATE: 6/30/2008  
 FILENAME: N:\PROJ\05161\Design\MOT\Sheets\03-5151\MOT-I-02.dgn

LEGEND	
	TYPE III BARRICADE
	WORK ZONE
	TYPE II BARRICADE OR DRUM W/ MONODIRECTIONAL STEADY BURNING LIGHT (SPACED @ 50' CENTERS IN TANGENTS 25' CENTERS IN TAPERS)
	SIGN ON PERMANENT OR TEMPORARY SUPPORT

REVISIONS	
NAME	DATE

**Clorba Group, Inc.**  
 CONSULTING ENGINEERS  
 5507 North Cumberland Avenue, Suite 402 Chicago, Illinois 60656  
 Tel. 773.775.4009 Fax 773.775.4014 Email chicago@clorba.com

CITY OF NORTH CHICAGO  
 MARTIN LUTHER KING JR. DRIVE IMPROVEMENTS  
 TRAFFIC CONTROL AND PROTECTION  
 STAGE 1

SCALE: 1"=50'  
 DATE: APRIL, 2008

DRAWN BY: BWS  
 CHECKED BY: MJL