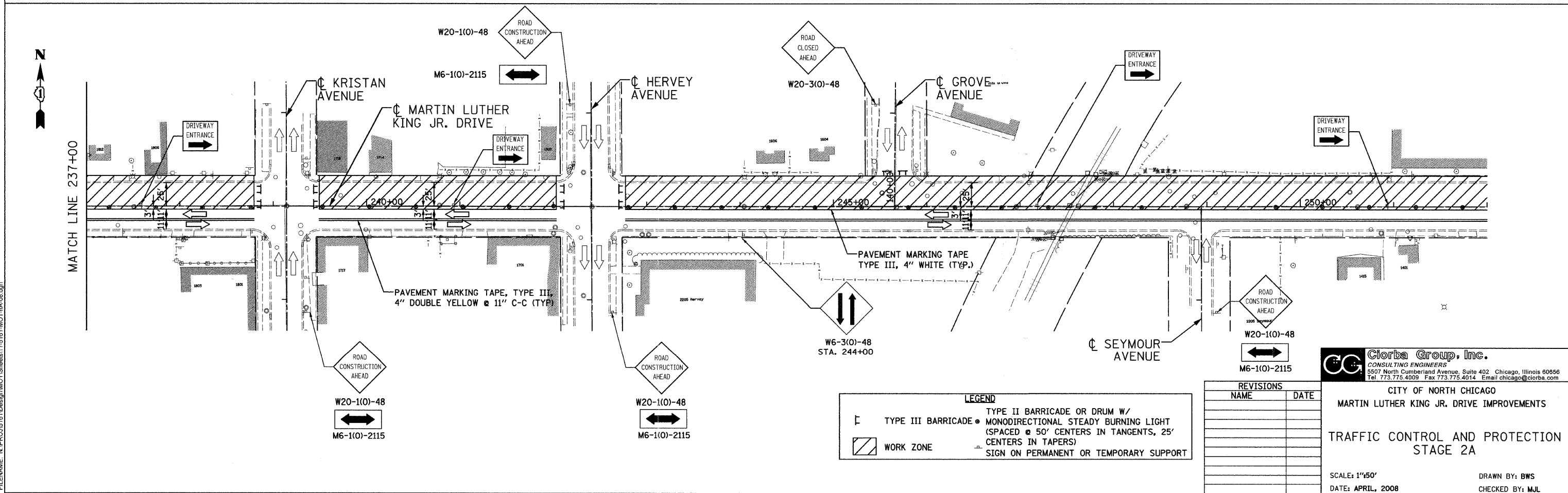
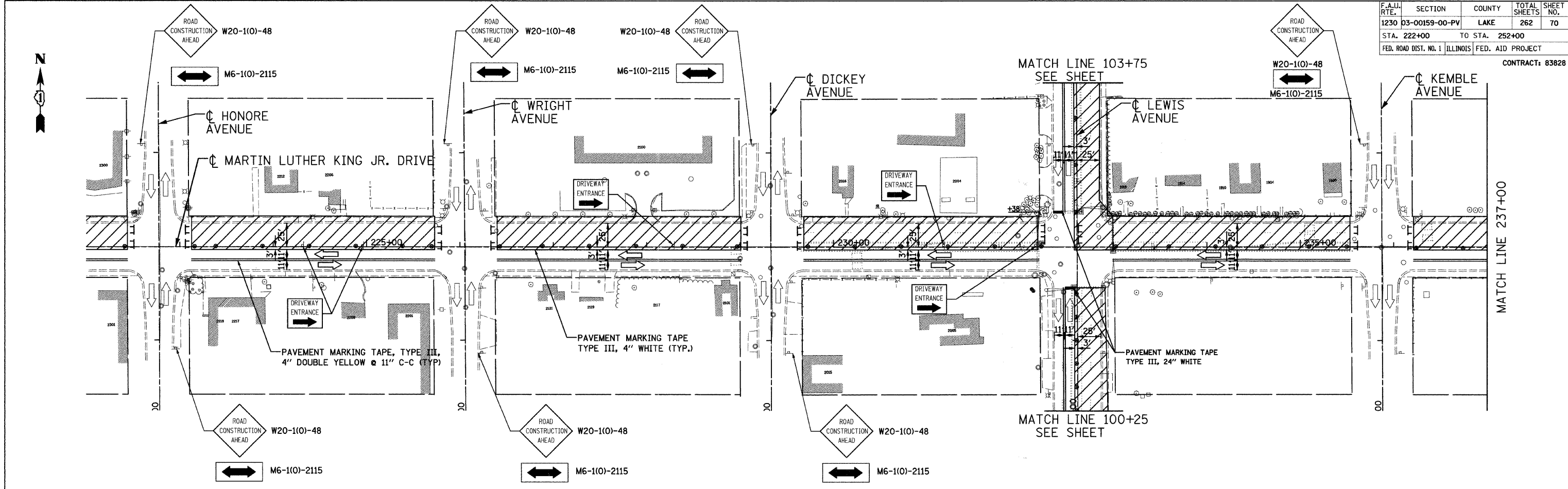


F.A.U. RTE.	SECTION	COUNTY	TOTAL SHEETS	SHEET NO.
1230	03-00159-00-PV	LAKE	262	70
STA. 222+00		TO STA. 252+00		
FED. ROAD DIST. NO. 1		ILLINOIS	FED. AID PROJECT	CONTRACT: 83828



DATE: 6/30/2008
 TIME: 3:48:35 PM
 FILENAME: N:\PROJ\5161\Design\MCT\Sheets\11-5161-MCT-11A-08.dgn

LEGEND

	TYPE III BARRICADE • MONODIRECTIONAL STEADY BURNING LIGHT (SPACED @ 50' CENTERS IN TANGENTS, 25' CENTERS IN TAPERS)
	WORK ZONE
	SIGN ON PERMANENT OR TEMPORARY SUPPORT

REVISIONS	
NAME	DATE

Clorba Group, Inc.
 CONSULTING ENGINEERS
 5507 North Cumberland Avenue, Suite 402 Chicago, Illinois 60656
 Tel. 773.775.4009 Fax 773.775.4014 Email chicago@clorba.com

CITY OF NORTH CHICAGO
 MARTIN LUTHER KING JR. DRIVE IMPROVEMENTS
 TRAFFIC CONTROL AND PROTECTION
 STAGE 2A

SCALE: 1"=50'
 DATE: APRIL, 2008
 DRAWN BY: BWS
 CHECKED BY: M.J.L.