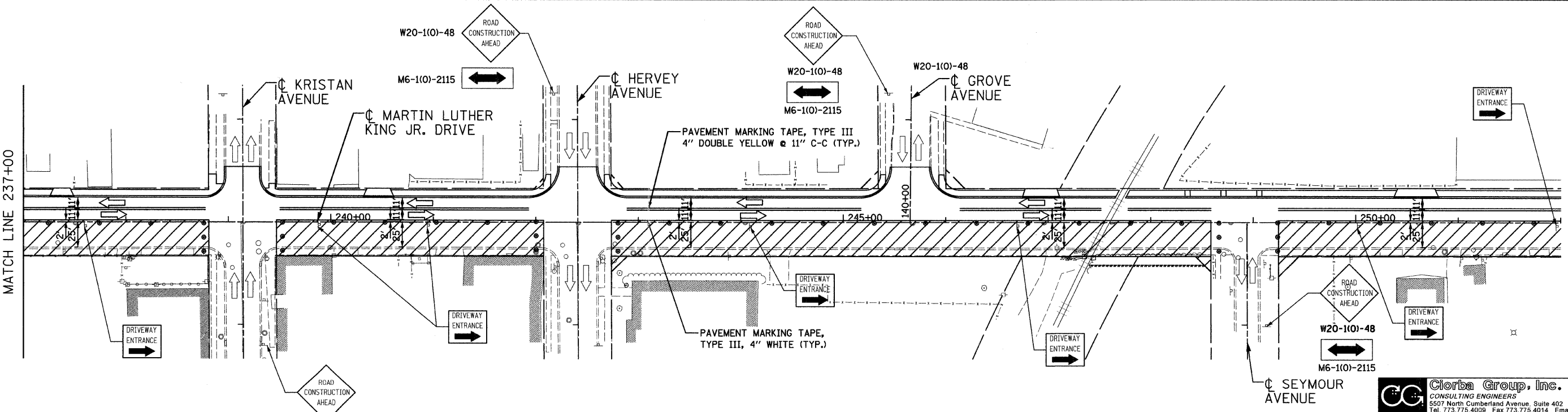
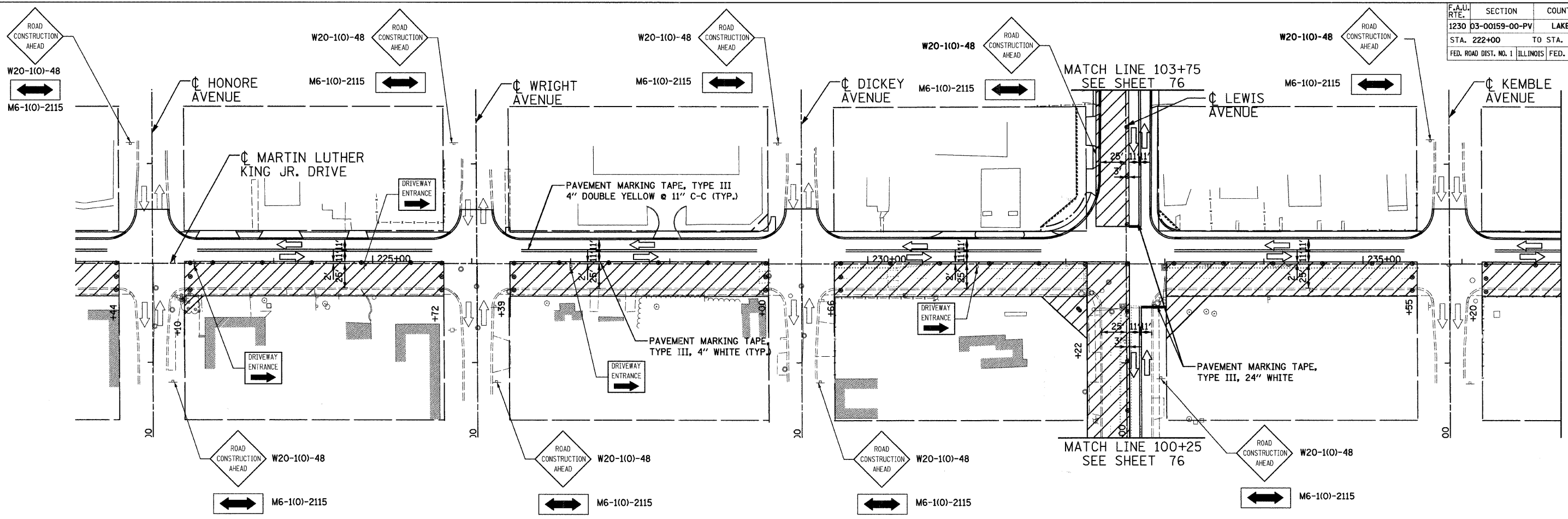


F.A.U. RTE.	SECTION	COUNTY	TOTAL SHEETS	SHEET NO.
1230	03-00159-00-PV	LAKE	262	75
STA. 222+00		TO STA. 252+00		
FED. ROAD DIST. NO. 1		ILLINOIS FED. AID PROJECT		
CONTRACT: 83828				



LEGEND

	TYPE III BARRICADE		TYPE II BARRICADE OR DRUM W/ MONODIRECTIONAL STEADY BURNING LIGHT (SPACED @ 50' CENTERS IN TANGENTS, 25' CENTERS IN TAPERS)
	WORK ZONE		SIGN ON PERMANENT OR TEMPORARY SUPPORT

REVISIONS	
NAME	DATE

Clorba Group, Inc.
CONSULTING ENGINEERS
5507 North Cumberland Avenue, Suite 402 Chicago, Illinois 60656
Tel. 773.775.4009 Fax 773.775.4014 Email chicago@clorba.com

CITY OF NORTH CHICAGO
MARTIN LUTHER KING JR. DRIVE IMPROVEMENTS

TRAFFIC CONTROL AND PROTECTION
STAGE 3A

SCALE: 1"=50'
DATE: APRIL, 2008

DRAWN BY: BWS
CHECKED BY: MJL

DATE: 6/30/2009
FILENAME: N:\PROJECTS\61\Design\MOT\Sheets\16-5\61-MOT-III-A-13.dgn