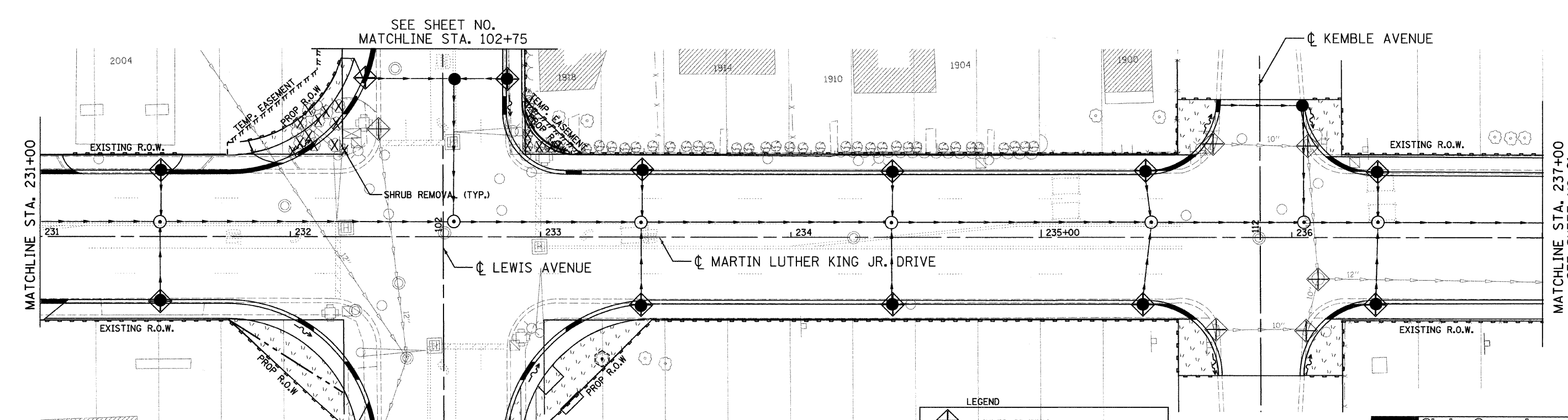
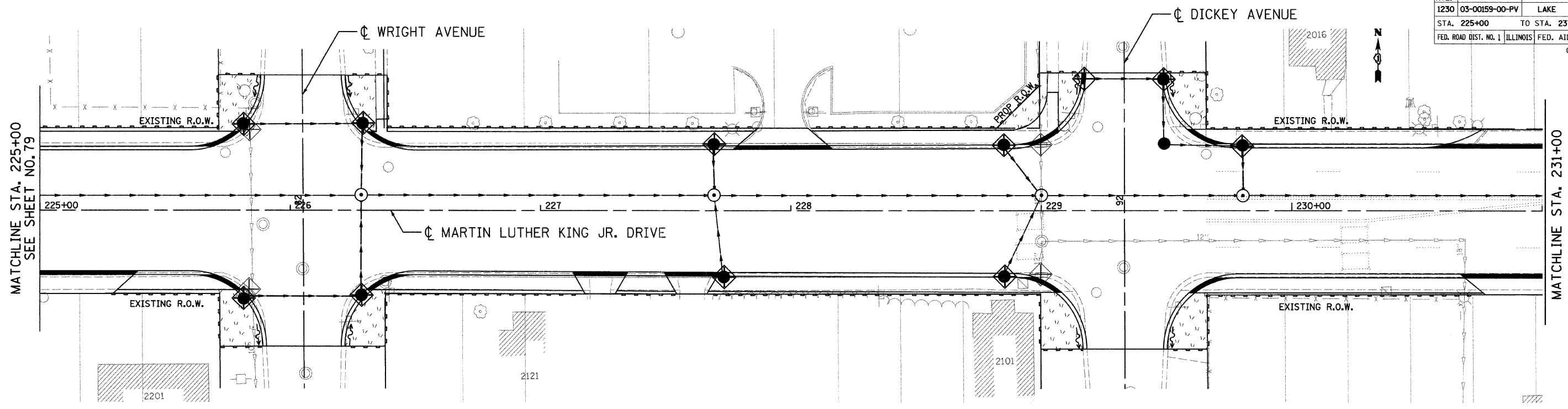


| | | | | |
|--------------------------------|----------------|------------------|--------------|-----------------|
| F.A.I. RTE. | SECTION | COUNTY | TOTAL SHEETS | SHEET NO. |
| 1230 | 03-00159-00-PV | LAKE | 262 | 80 |
| STA. 225+00 | | TO STA. 237+00 | | |
| FED. ROAD DIST. NO. 1 ILLINOIS | | FED. AID PROJECT | | CONTRACT: 83828 |



LEGEND

| | |
|--|---------------------------|
| | INLET FILTERS |
| | TREE TRUNK PROTECTION |
| | BUSH REMOVAL (CLEARING) |
| | PERIMETER EROSION BARRIER |
| | SODDING, SALT TOLERANT |

| REVISIONS | |
|-----------|------|
| NAME | DATE |
| | |
| | |
| | |
| | |
| | |
| | |
| | |
| | |
| | |
| | |

Ciorba Group, Inc.
CONSULTING ENGINEERS
5507 North Cumberland Avenue, Suite 402 Chicago, Illinois 60656
Tel. 773.775.4009 Fax 773.775.4014 Email chicagociorba.com

CITY OF NORTH CHICAGO
MARTIN LUTHER KING JR. DRIVE IMPROVEMENTS
MARTIN LUTHER KING JR. DRIVE
EROSION CONTROL
AND LANDSCAPING
STA. 225+00 TO 237+00

SCALE: 1"=20'
DATE: APRIL, 2008

DRAWN BY: KMS
CHECKED BY: MJL

DATE: 7/1/2008
TIME: 7:35:50 AM
FILENAME: N:\PROJ\05161\Design\Erosion\05161-ERC-03.dgn