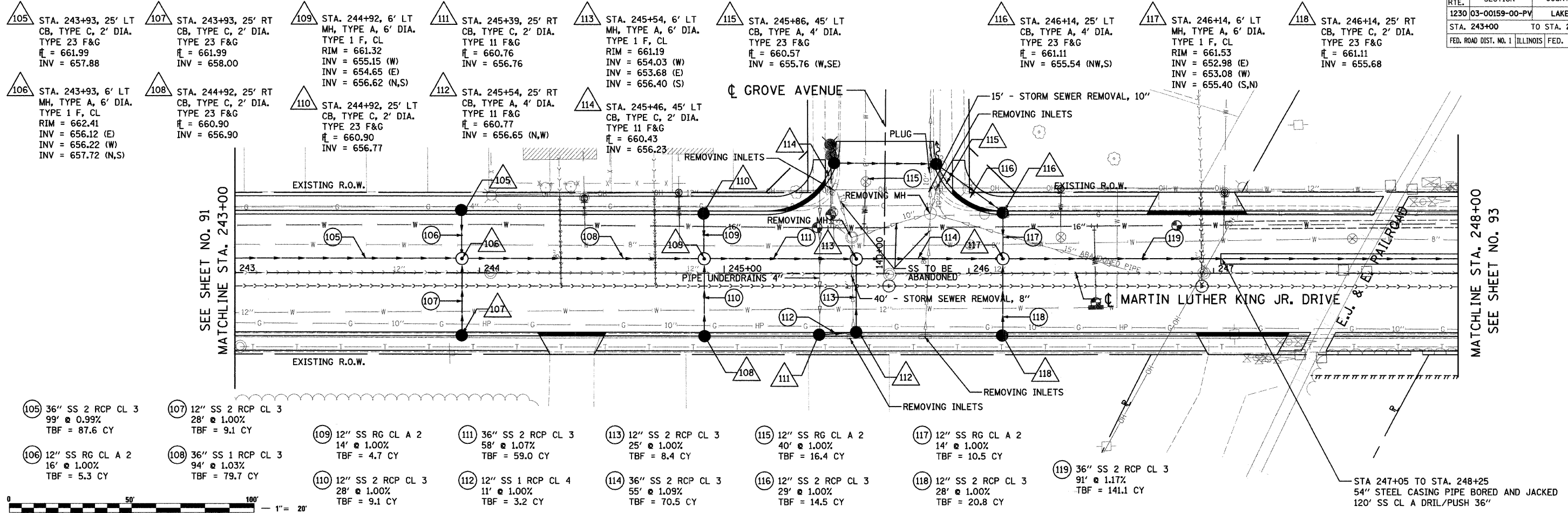
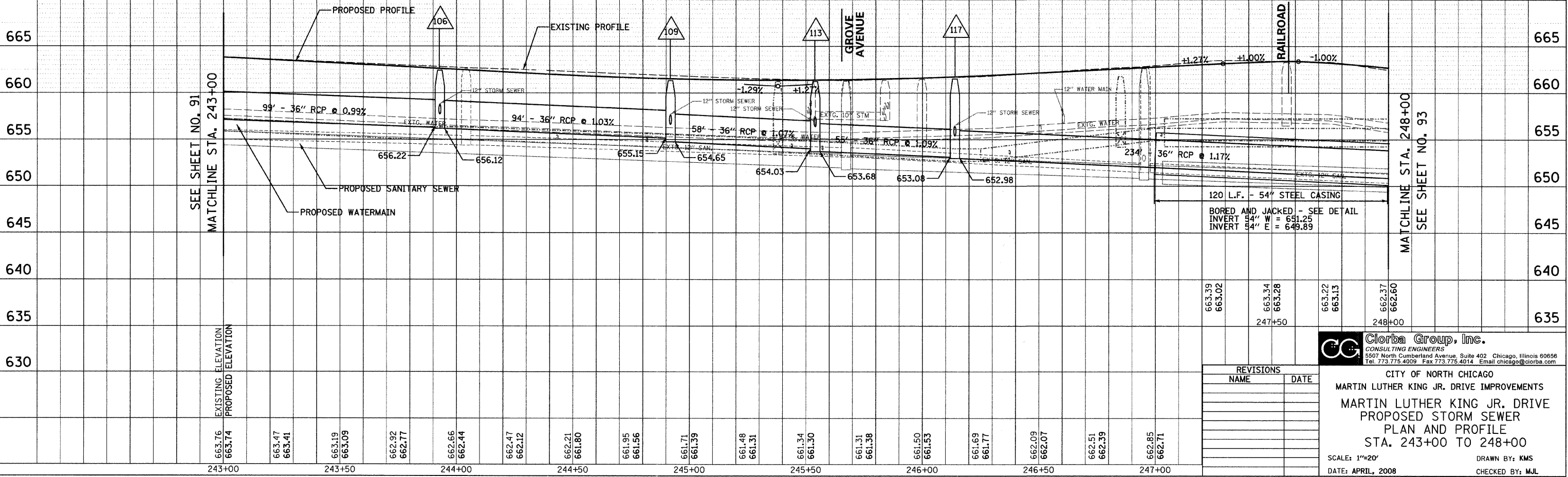


F.A.U. RT#	SECTION	COUNTY	TOTAL SHEETS	SHEET NO.
1230	03-00159-00-PV	LAKE	262	92
STA. 243+00 TO STA. 248+00				
FED. ROAD DIST. NO. 1 ILLINOIS FED. AID PROJECT				
CONTRACT: 83828				



105	36" SS 2 RCP CL 3 99' @ 0.99% TBF = 87.6 CY	107	12" SS 2 RCP CL 3 28' @ 1.00% TBF = 9.1 CY	109	12" SS RG CL A 2 14' @ 1.00% TBF = 4.7 CY	111	36" SS 2 RCP CL 3 58' @ 1.07% TBF = 59.0 CY	113	12" SS 2 RCP CL 3 25' @ 1.00% TBF = 8.4 CY	115	12" SS RG CL A 2 40' @ 1.00% TBF = 16.4 CY	117	12" SS RG CL A 2 14' @ 1.00% TBF = 10.5 CY	119	36" SS 2 RCP CL 3 91' @ 1.17% TBF = 141.1 CY
106	12" SS RG CL A 2 16' @ 1.00% TBF = 5.3 CY	108	36" SS 1 RCP CL 3 94' @ 1.03% TBF = 79.7 CY	110	12" SS 2 RCP CL 3 28' @ 1.00% TBF = 9.1 CY	112	12" SS 1 RCP CL 4 11' @ 1.00% TBF = 3.2 CY	114	36" SS 2 RCP CL 3 55' @ 1.09% TBF = 70.5 CY	116	12" SS 2 RCP CL 3 29' @ 1.00% TBF = 14.5 CY	118	12" SS 2 RCP CL 3 28' @ 1.00% TBF = 20.8 CY		



DATE	BY	REVISION

DATE	BY	REVISION

DATE: 7/1/2008
 FILENAME: N:\PROJ\05161\Design\Drawings\05161-CRN-08.dgn

REVISIONS	
NAME	DATE

Clorba Group, Inc.
 CONSULTING ENGINEERS
 5507 North Cumberland Avenue, Suite 402 Chicago, Illinois 60656
 Tel. 773.775.4009 Fax 773.775.4014 Email: chicago@clorba.com

CITY OF NORTH CHICAGO
 MARTIN LUTHER KING JR. DRIVE IMPROVEMENTS
 MARTIN LUTHER KING JR. DRIVE
 PROPOSED STORM SEWER
 PLAN AND PROFILE
 STA. 243+00 TO 248+00

SCALE: 1"=20'
 DATE: APRIL, 2008
 DRAWN BY: KMS
 CHECKED BY: MJL