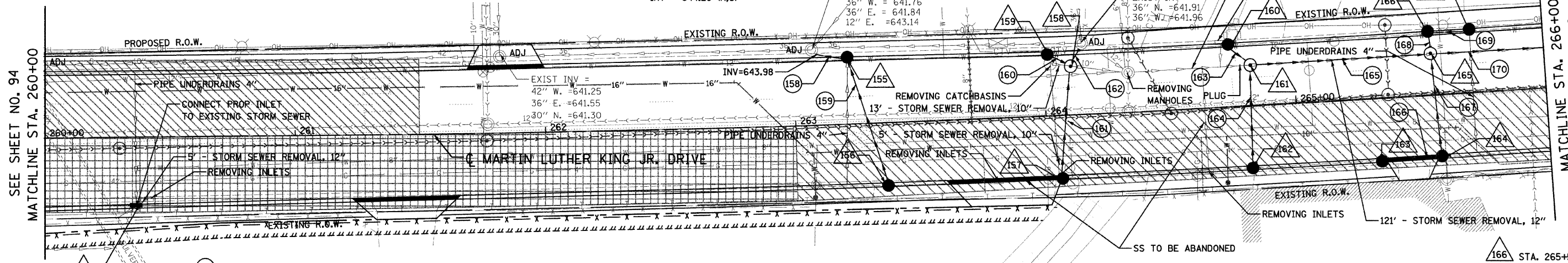
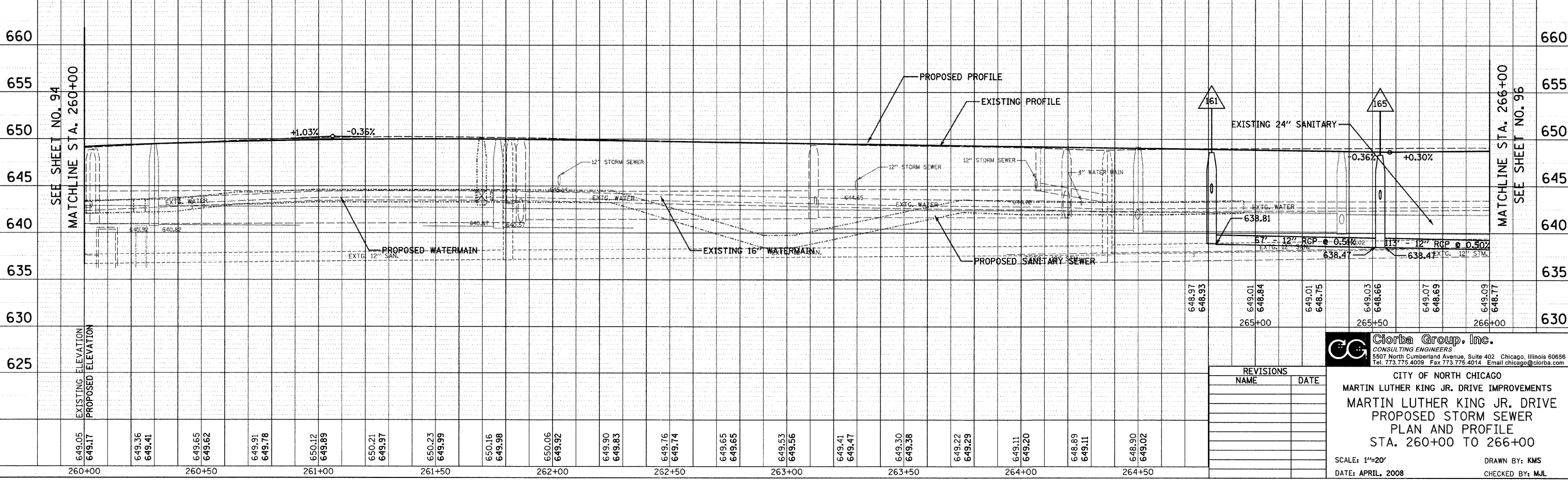


F.A.U. RTE.	SECTION	COUNTY	TOTAL SHEETS	SHEET NO.
1230	03-00159-00-PV	LAKE	262	95
STA. 260+00		TO STA. 266+00		
FED. ROAD DIST. NO. 1 ILLINOIS FED. AID PROJECT				
CONTRACT: 83828				

- 152 STA. 260+36, 27.8' RT INLET, TYPE A TYPE 23 F&G  $\bar{r} = 648.91$  INV = 644.97
- 153 NOT USED
- 154 NOT USED
- 155 STA. 263+22, 26.4' LT CB, TYPE A, 4' DIA. TYPE 23 F&G  $\bar{r} = 648.91$  INV = 644.39 (S) INV = 644.09 (W)
- 156 NOT USED
- 157 STA. 264+05, 25' RT CB, TYPE C, 2' DIA. TYPE 23 F&G  $\bar{r} = 648.65$  INV = 648.65 INV = 645.01
- 158 STA. 264+11, 20' LT MH, TYPE A, 4' DIA. TYPE 1 F, CL RIM = 648.76 INV = 644.60 (NW, S) INV = 644.30 (NE)
- 159 STA. 264+02, 25.1' LT CB, TYPE C, 2' DIA. TYPE 23 F&G  $\bar{r} = 648.66$  INV = 648.66 INV = 644.66
- 160 STA. 264+75, 25' LT CB, TYPE C, 2' DIA. TYPE 23 F&G  $\bar{r} = 648.39$  INV = 648.39 INV = 644.37
- 161 STA. 264+82, 16' LT MH, TYPE A, 4' DIA. TYPE 1 F, CL RIM = 648.59 INV = 638.81 (E) INV = 644.28 (N,S)
- 162 STA. 264+82, 25' RT CB, TYPE C, 2' DIA. TYPE 23 F&G  $\bar{r} = 648.37$  INV = 644.66
- 163 STA. 265+34, 25' RT CB, TYPE C, 2' DIA. TYPE 11 F&G  $\bar{r} = 648.18$  INV = 644.18
- 164 STA. 265+54, 25' RT CB, TYPE A, 4' DIA. TYPE 11 F&G  $\bar{r} = 648.11$  INV = 644.00 (N,W)
- 165 STA. 265+54, 17' LT MH, TYPE A, 4' DIA. TYPE 1 F, CL RIM = 648.31 INV = 638.47 (E,W) INV = 643.62 (N,S)



- 155 NOT USED
- 156 NOT USED
- 157 NOT USED
- 158 12" SS 2 RCP CL 3 11' @ 1.00% TBF = 7.2 CY
- 159 12" SS RG CL A 2 50' @ 1.00% TBF = 15.9 CY
- 160 12" SS 1 RCP CL 4 6' @ 1.00% TBF = 1.8 CY
- 161 12" SS RG CL A 1 41' @ 1.00% TBF = 11.4 CY
- 162 12" SS 2 RCP CL 3 5' @ 1.00% TBF = 1.8 CY
- 163 12" SS 1 RCP CL 4 9' @ 1.00% TBF = 2.7 CY
- 164 12" SS RG CL A 1 38' @ 1.00% TBF = 11.0 CY
- 165 12" SS 2 RCP CL 3 67' @ 0.51% TBF = 93.0 CY
- 166 12" SS RG CL A 1 19' @ 1.00% TBF = 5.6 CY
- 167 12" SS RG CL A 2 38' @ 1.00% TBF = 12.6 CY
- 168 12" SS 2 RCP CL 3 5' @ 1.00% TBF = 1.7 CY
- 169 12" SS 2 RCP CL 3 11' @ 1.00% TBF = 3.6 CY
- 170 12" SS 2 RCP CL 3 113' @ 0.50% TBF = 165.9 CY
- 166 STA. 265+54, 25' LT CB, TYPE A, 4' DIA. TYPE 11 F&G  $\bar{r} = 648.11$  INV = 643.67 (S,E)
- 167 STA. 265+71, 25' LT CB, TYPE C, 2' DIA. TYPE 11 F&G  $\bar{r} = 648.14$  INV = 643.78



REVISIONS	
NAME	DATE

**Clorba Group, Inc.**  
CONSULTING ENGINEERS  
5507 North Cumberland Avenue, Suite 402 Chicago, Illinois 60656  
Tel. 773.775.4009 Fax 773.775.4014 Email chicago@clorba.com

CITY OF NORTH CHICAGO  
MARTIN LUTHER KING JR. DRIVE IMPROVEMENTS  
MARTIN LUTHER KING JR. DRIVE  
PROPOSED STORM SEWER  
PLAN AND PROFILE  
STA. 260+00 TO 266+00

SCALE: 1"=20'  
DATE: APRIL, 2008  
DRAWN BY: KMS  
CHECKED BY: MJL

DATE: 7/12/08  
FILENAME: N:\PROJECTS\161\Design\Drawings\161\_DRAIN-1.dgn

PROFILE: SUBMITTED, PLOTTED, GRADES CHECKED, STRUCTURE NOT YET DESIGNED

PLAN: SUBMITTED, PLOTTED, ALIGNED, CHECKED, CADD FILE NAME, NO.