

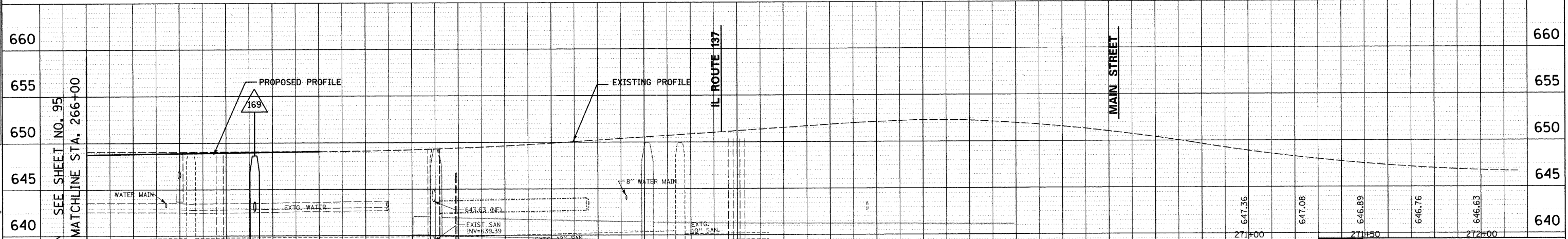
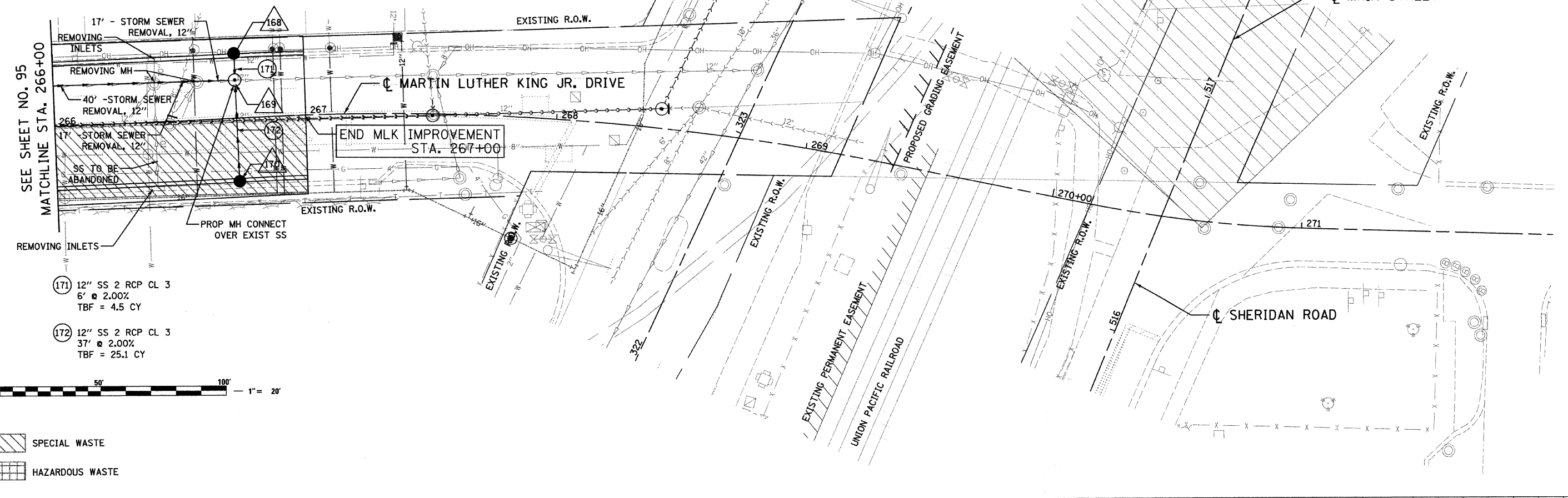
F.A.U. RTE.	SECTION	COUNTY	TOTAL SHEETS	SHEET NO.
1230	03-00159-00-PV	LAKE	262	96
STA. 266+00		TO STA. 272+00		
FED. ROAD DIST. NO. 1 ILLINOIS			FED. AID PROJECT	
CONTRACT: 83828				

<p>168 STA. 266+73, 25' LT CB, TYPE C, 2' DIA. TYPE 23 F&amp;G R = 648.44 INV = 642.82</p>	<p>169 STA. 266+73, 15' LT MH, TYPE A, 4' DIA. TYPE 1 F, CL RIM = 648.68 INV = 637.90 (E,W) INV = 642.70 (N) INV = 642.80 (S)</p>	<p>170 STA. 266+73, 25' RT CB, TYPE C, 2' DIA. TYPE 23 F&amp;G R = 648.44 INV = 643.54</p>
--	---	--



PLAN	BY	DATE
DESIGNED		
CHECKED		
IN CHARGE		
DATE		

PROFILE	BY	DATE
DESIGNED		
CHECKED		
IN CHARGE		
DATE		



DATE: 7/1/2008  
TIME: 7:45:25 AM  
FILENAME: N:\PROJECTS\181\Design\Drainage\516-LDRN-12.dgn

REVISIONS	
NAME	DATE

**Clorba Group, Inc.**  
CONSULTING ENGINEERS  
5507 North Cumberland Avenue, Suite 402 Chicago, Illinois 60656  
Tel. 773.775.4009 Fax 773.775.4014 Email: chicago@clorba.com

CITY OF NORTH CHICAGO  
**MARTIN LUTHER KING JR. DRIVE IMPROVEMENTS**  
**MARTIN LUTHER KING JR. DRIVE**  
**PROPOSED STORM SEWER**  
**PLAN AND PROFILE**  
**STA. 266+00 TO STA. 272+00**

SCALE: 1"=20'  
DATE: APRIL, 2008

DRAWN BY: KMS  
CHECKED BY: MJL