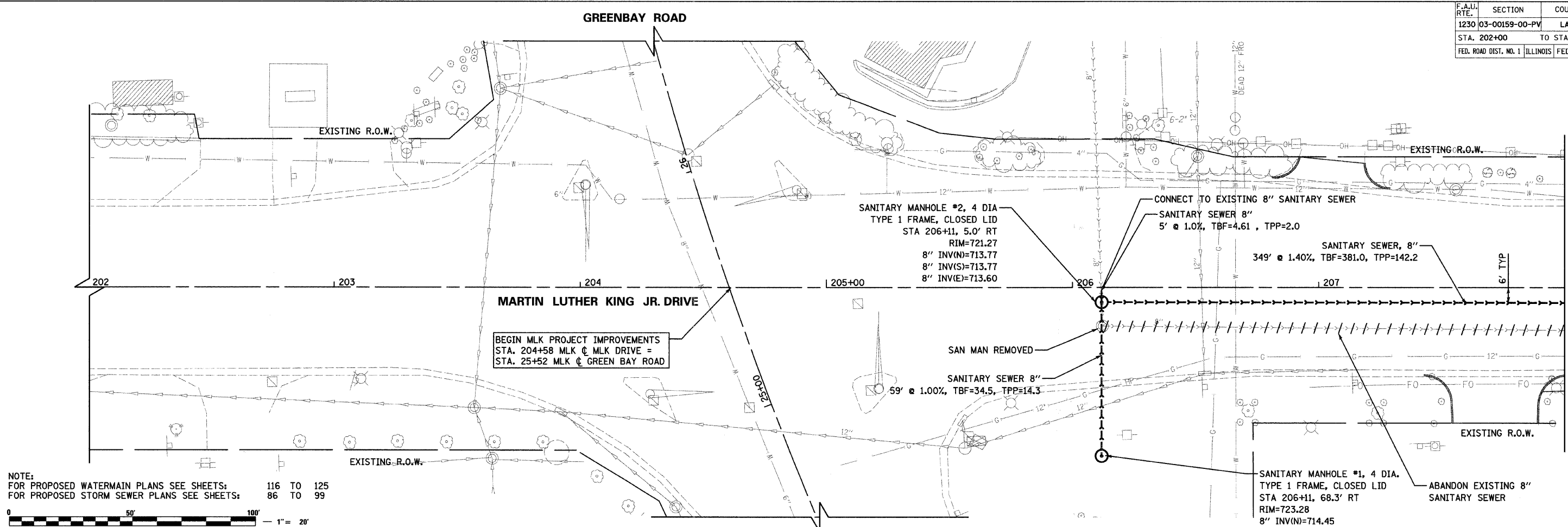


F.A.U. RTE.	SECTION	COUNTY	TOTAL SHEETS	SHEET NO.
1230	03-00159-00-PV	LAKE	262	100
STA. 202+00		TO STA. 208+00		
FED. ROAD DIST. NO. 1		ILLINOIS	FED. AID PROJECT	

CONTRACT: 83828



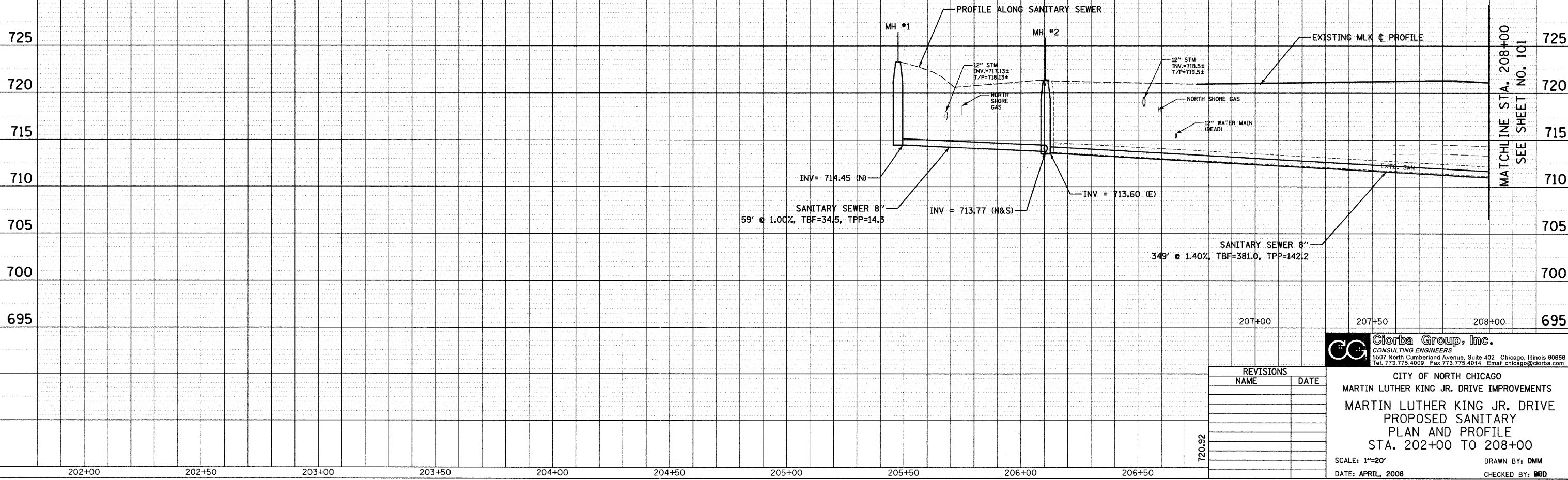
PLAN	DATE
SURVEYED	BY
PLOTTED	
GRADED	
STRUCTURE	
NO.	



NOTE:
 FOR PROPOSED WATERMAIN PLANS SEE SHEETS: 116 TO 125
 FOR PROPOSED STORM SEWER PLANS SEE SHEETS: 86 TO 99



PROFILE	DATE
SURVEYED	BY
PLOTTED	
GRADED	
STRUCTURE	
NO.	



REVISIONS	
NAME	DATE

Clorba Group, Inc.
 CONSULTING ENGINEERS
 5507 North Cumberland Avenue, Suite 402 Chicago, Illinois 60656
 Tel. 773.775.4009 Fax 773.775.4014 Email: chicago@clorba.com

CITY OF NORTH CHICAGO
 MARTIN LUTHER KING JR. DRIVE IMPROVEMENTS
 MARTIN LUTHER KING JR. DRIVE
 PROPOSED SANITARY
 PLAN AND PROFILE
 STA. 202+00 TO 208+00

SCALE: 1"=20' DRAWN BY: DMM
 DATE: APRIL, 2008 CHECKED BY: MBD

DATE: 7/1/2008
 FILENAME: N:\PROJ\05161\Design\Sanitary\PSAN01.dgn