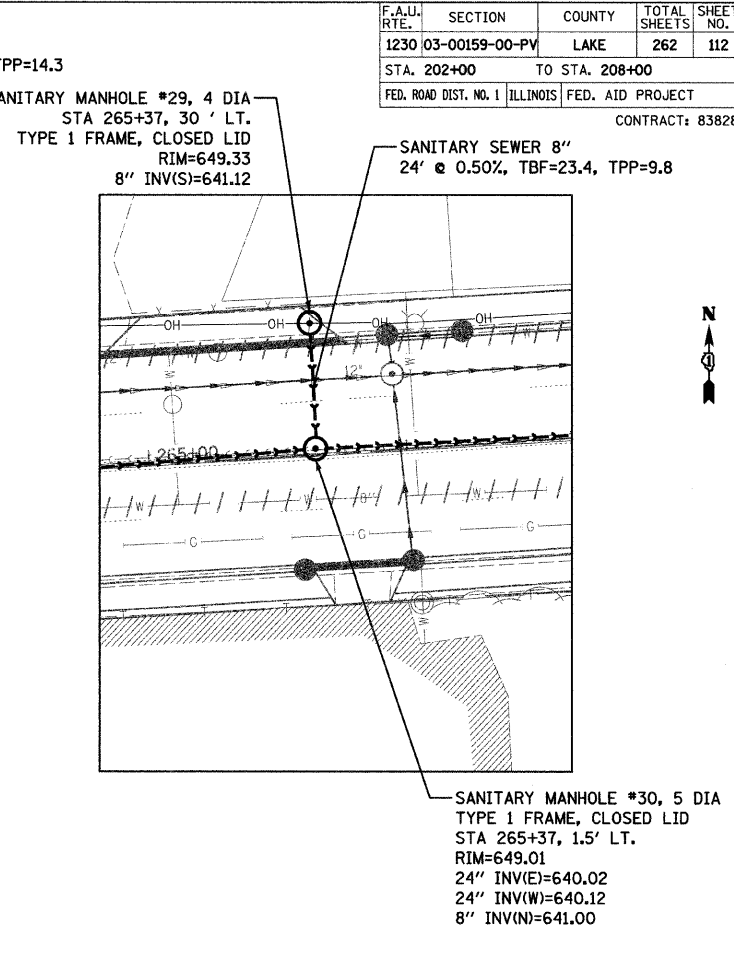
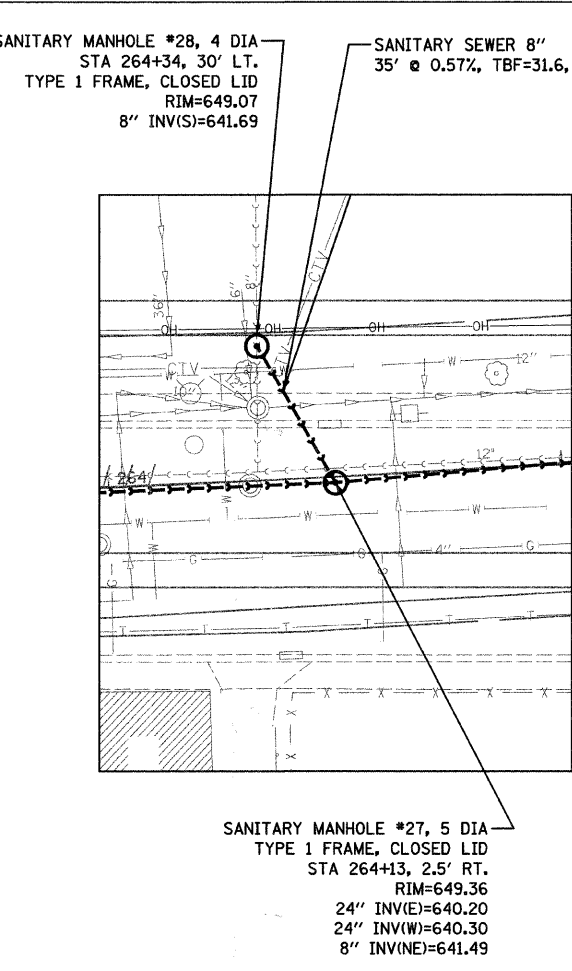
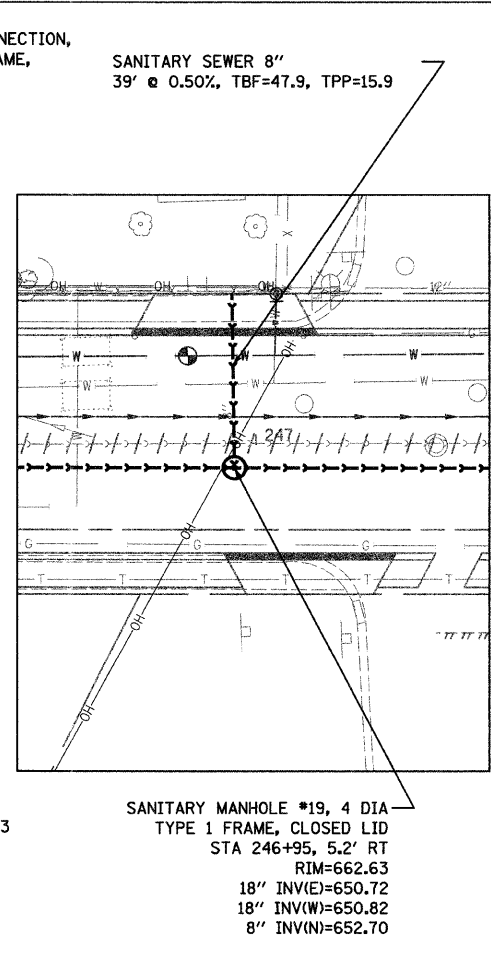
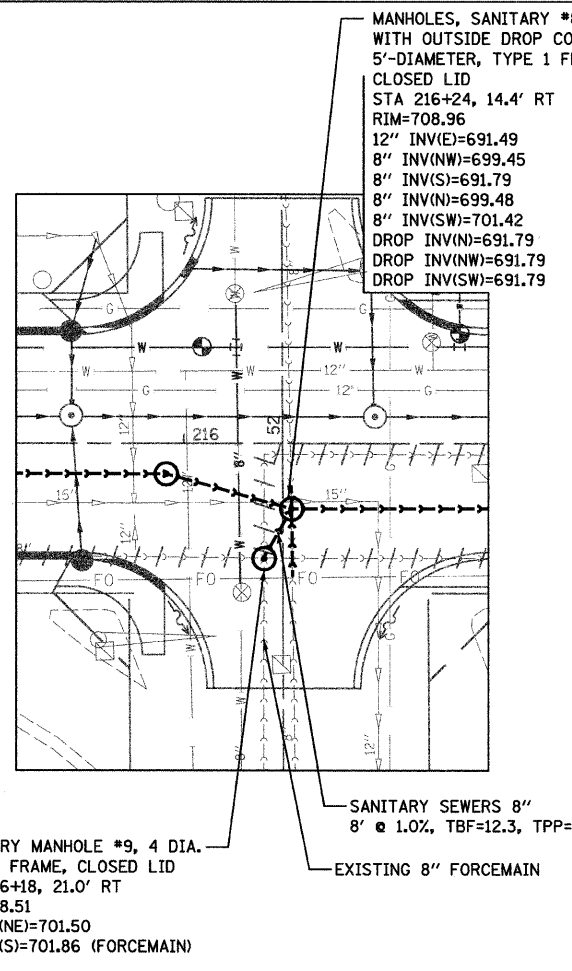
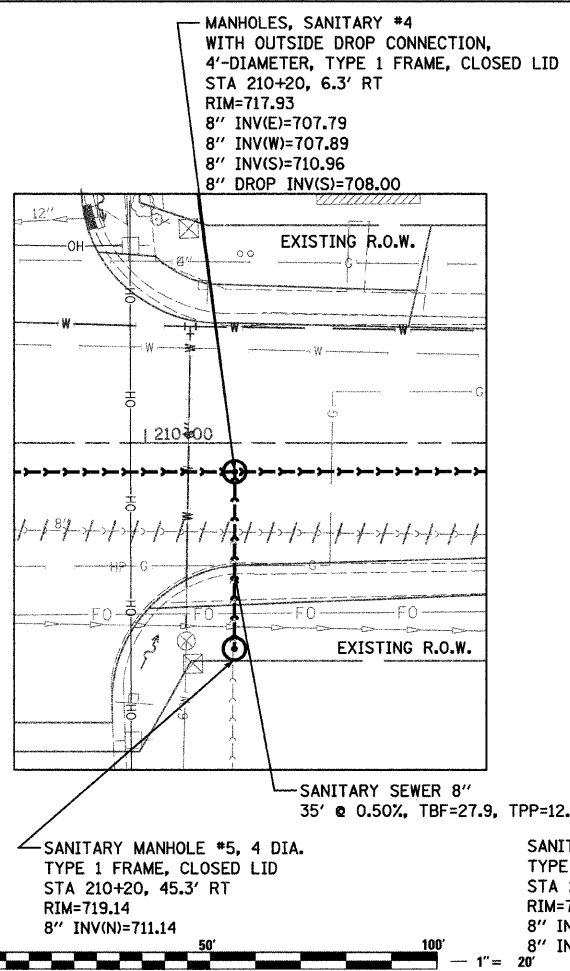
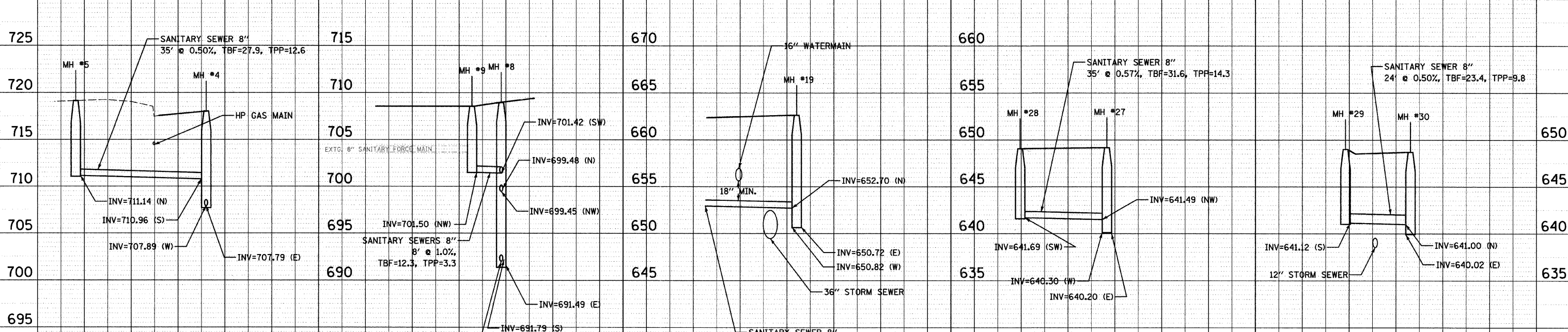


F.A.U. RTE.	SECTION	COUNTY	TOTAL SHEETS	SHEET NO.
1230 03-00159-00-PV		LAKE	262	112
STA. 202+00		TO STA. 208+00		
FED. ROAD DIST. NO. 1		ILLINOIS		FED. AID PROJECT
				CONTRACT: 83828

PLAN	DATE	BY
SURVEYED		
PLOTTED		
ALIGNMENT CHECKED		
GRID		
CADD FILE NAME		
NO.		



PROFILE	DATE	BY
SURVEYED		
PLOTTED		
GRADES CHECKED		
STRUCTURE NOTATION CHKD		
NO.		



DATE: 7/1/2008  
TIME: 2:20 PM  
FILENAME: N:\PROJECTS\161\Design\Sanitary\PSAM13.dgn

REVISIONS	
NAME	DATE

**Clorba Group, Inc.**  
CONSULTING ENGINEERS  
5507 North Cumberland Avenue, Suite 402 Chicago, Illinois 60656  
Tel. 773.775.4009 Fax 773.775.4014 Email: chicago@clorba.com

CITY OF NORTH CHICAGO  
MARTIN LUTHER KING JR. DRIVE IMPROVEMENTS  
MARTIN LUTHER KING JR. DRIVE  
PROPOSED SANITARY  
PLAN AND PROFILE

SCALE: 1"=20'  
DATE: APRIL, 2008

DRAWN BY: DMM  
CHECKED BY: BPD