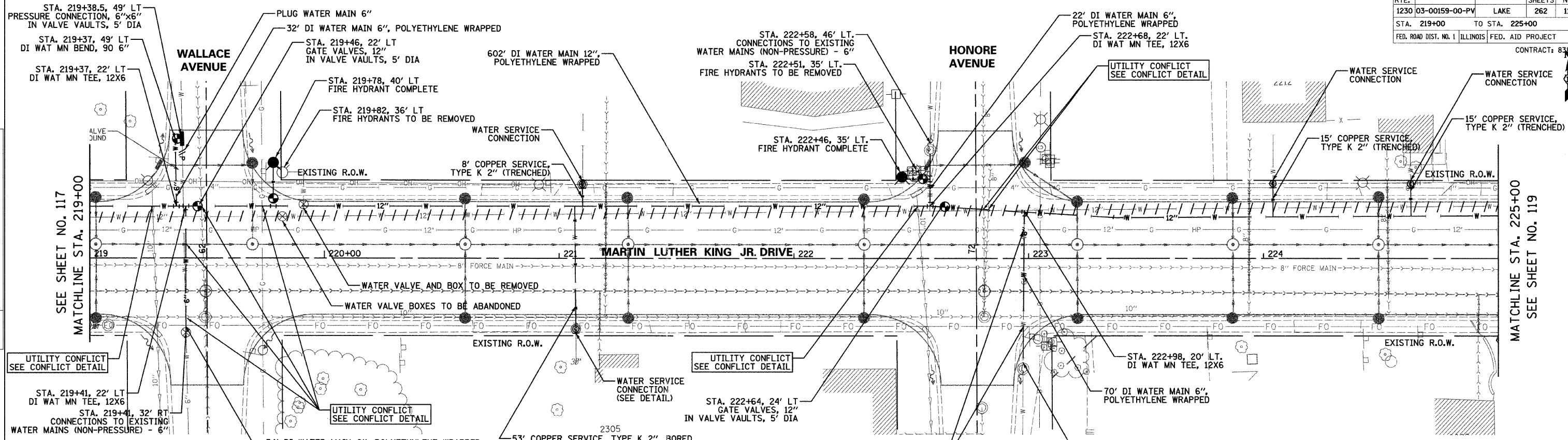
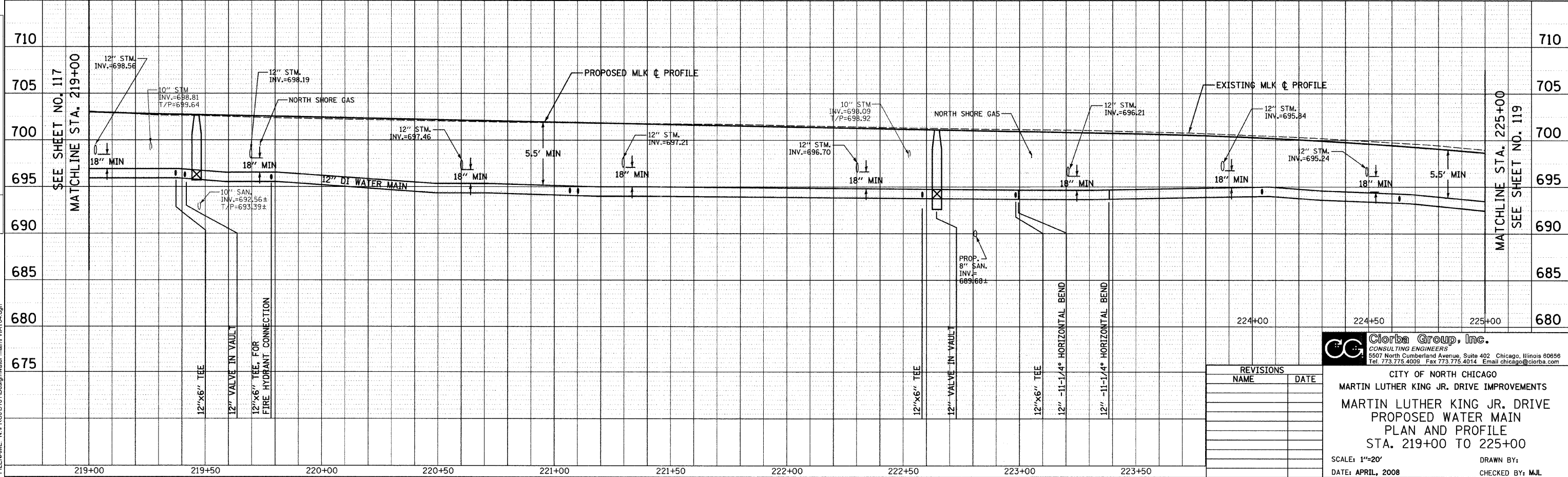
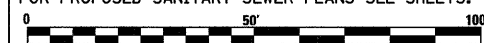


F.A.U. RTE.	SECTION	COUNTY	TOTAL SHEETS	SHEET NO.
1230	03-00159-00-PV	LAKE	262	118
STA. 219+00 TO STA. 225+00		FED. ROAD DIST. NO. 1 ILLINOIS FED. AID PROJECT		
CONTRACT: 83828				



NOTE:
 FOR PROPOSED STORM SEWER PLANS SEE SHEETS: 86 TO 99
 FOR PROPOSED SANITARY SEWER PLANS SEE SHEETS: 100 TO 110



DATE	
BY	
DESIGNED	
CHECKED	
PLOTTED	
APPROVED	
FILE NAME	
NO.	
PLAN	

DATE	
BY	
DESIGNED	
CHECKED	
PLOTTED	
APPROVED	
FILE NAME	
NO.	
PROFILE	

REVISIONS	NAME	DATE

Clorba Group, Inc.
 CONSULTING ENGINEERS
 5507 North Cumberland Avenue, Suite 402 Chicago, Illinois 60656
 Tel. 773.775.4009 Fax 773.775.4014 Email chicago@clorba.com

CITY OF NORTH CHICAGO
 MARTIN LUTHER KING JR. DRIVE IMPROVEMENTS
 MARTIN LUTHER KING JR. DRIVE
 PROPOSED WATER MAIN
 PLAN AND PROFILE
 STA. 219+00 TO 225+00

SCALE: 1"=20'
 DATE: APRIL, 2008

DRAWN BY:
 CHECKED BY: MJL

DATE: 7/1/2008
 FILE: C:\Users\m1\AppData\Local\Temp\1\PP0105161\Design\water_main\PLA104.dgn