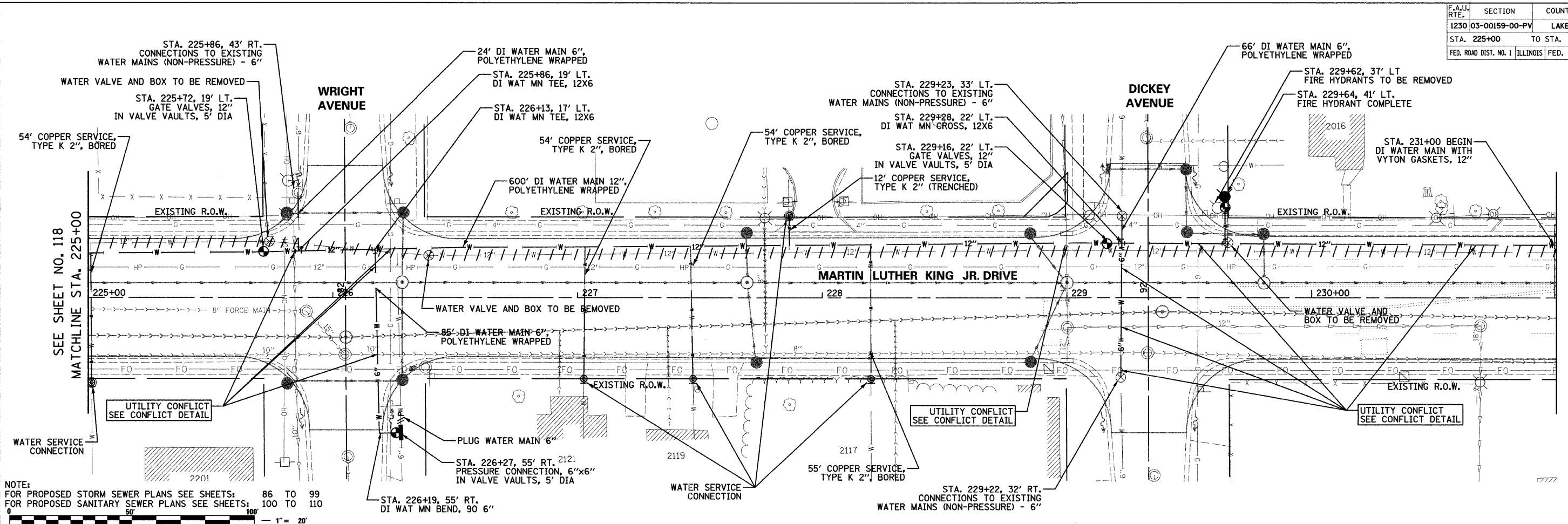


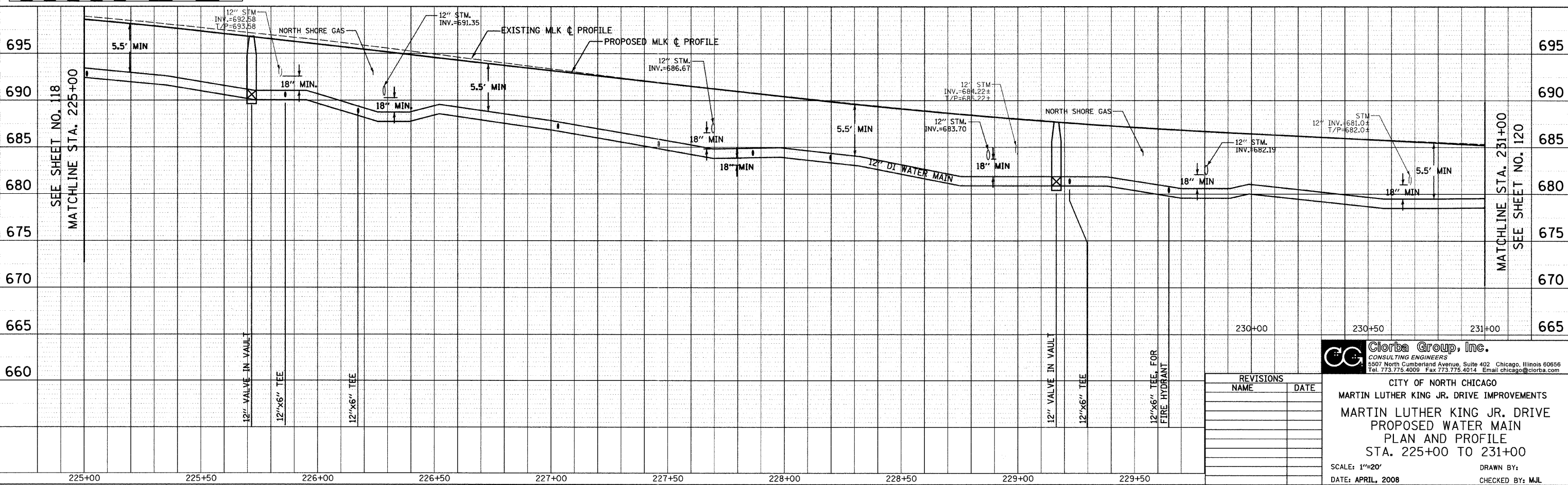
F.A.U. RTE.	SECTION	COUNTY	TOTAL SHEETS	SHEET NO.
1230 03-00159-00-PV	LAKE	LAKE	262	119
STA. 225+00		TO STA. 231+00		
FED. ROAD DIST. NO. 1		ILLINOIS		FED. AID PROJECT
CONTRACT: 83828				

PLAN	NO.	DATE
NO.		

PROFILE	NO.	DATE
NO.		



NOTE:
 FOR PROPOSED STORM SEWER PLANS SEE SHEETS: 86 TO 99
 FOR PROPOSED SANITARY SEWER PLANS SEE SHEETS: 100 TO 110



REVISIONS	
NAME	DATE

Clorba Group, Inc.
 CONSULTING ENGINEERS
 5507 North Cumberland Avenue, Suite 402 Chicago, Illinois 60656
 Tel. 773.775.4009 Fax 773.775.4014 Email: chicago@clorba.com

CITY OF NORTH CHICAGO
 MARTIN LUTHER KING JR. DRIVE IMPROVEMENTS
 MARTIN LUTHER KING JR. DRIVE
 PROPOSED WATER MAIN
 PLAN AND PROFILE
 STA. 225+00 TO 231+00

SCALE: 1"=20'
 DATE: APRIL, 2008

DRAWN BY:
 CHECKED BY: MJL

DATE: 7/1/2008
 FILENAME: N:\PROJECTS\161\Design\water main\WAT05.dgn