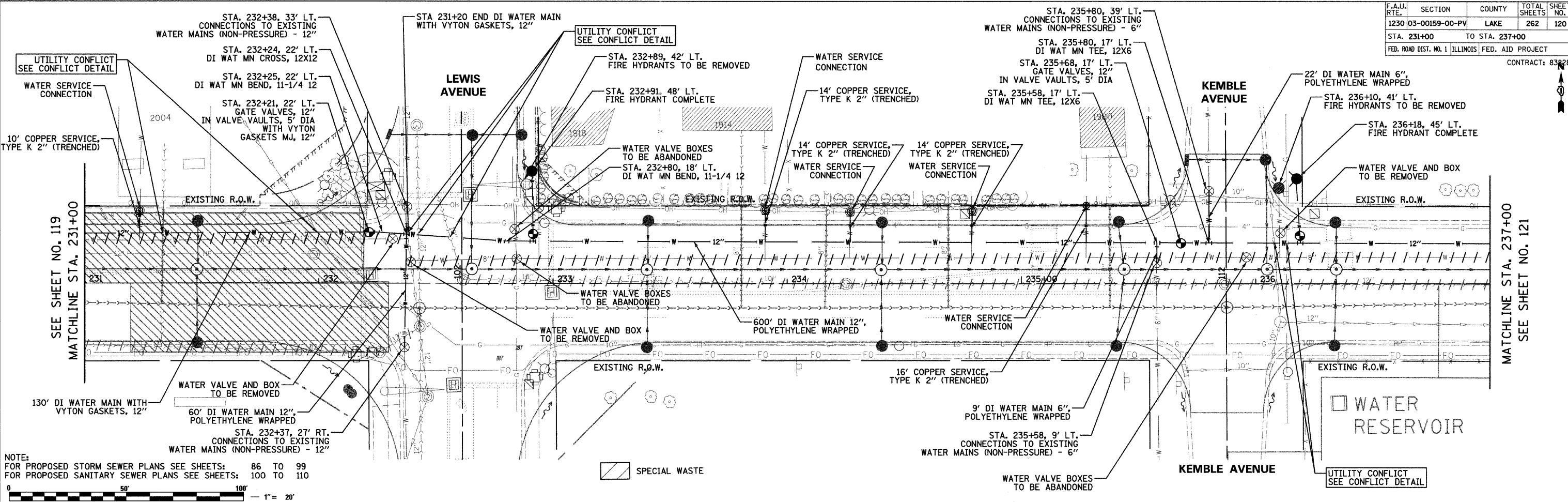


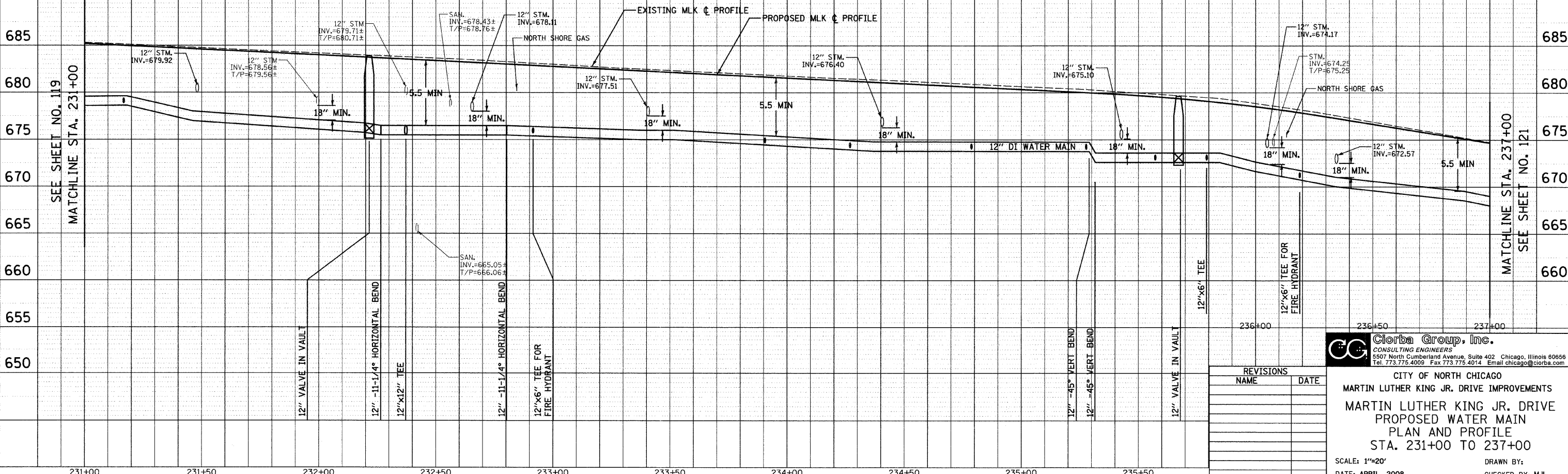
F.A.U. RTE.	SECTION	COUNTY	TOTAL SHEETS	SHEET NO.
1230	03-00159-00-PV	LAKE	262	120

STA. 231+00 TO STA. 237+00
 FED. ROAD DIST. NO. 1 ILLINOIS FED. AID PROJECT
 CONTRACT: 83828

DATE	BY	REVISIONS



DATE	BY	REVISIONS



REVISIONS	NAME	DATE

Clorba Group, Inc.
 CONSULTING ENGINEERS
 5507 North Cumberland Avenue, Suite 402 Chicago, Illinois 60656
 Tel. 773.775.4009 Fax 773.775.4014 Email: chicago@clorba.com

CITY OF NORTH CHICAGO
 MARTIN LUTHER KING JR. DRIVE IMPROVEMENTS
 MARTIN LUTHER KING JR. DRIVE
 PROPOSED WATER MAIN
 PLAN AND PROFILE
 STA. 231+00 TO 237+00

SCALE: 1"=20'
 DATE: APRIL, 2008
 DRAWN BY: M.JL
 CHECKED BY: M.JL

DATE: 7/1/2008
 TIME: 10:33 AM
 FILENAME: N:\PROJ\05161\Design\water main\PW06.dgn