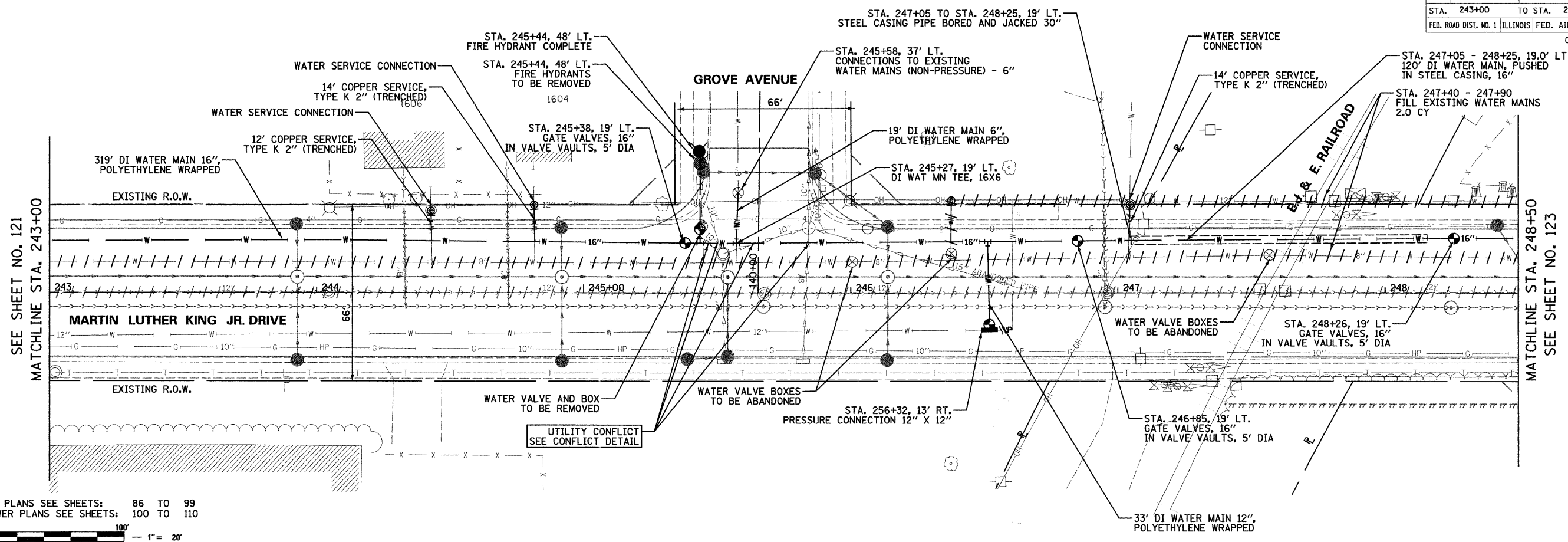
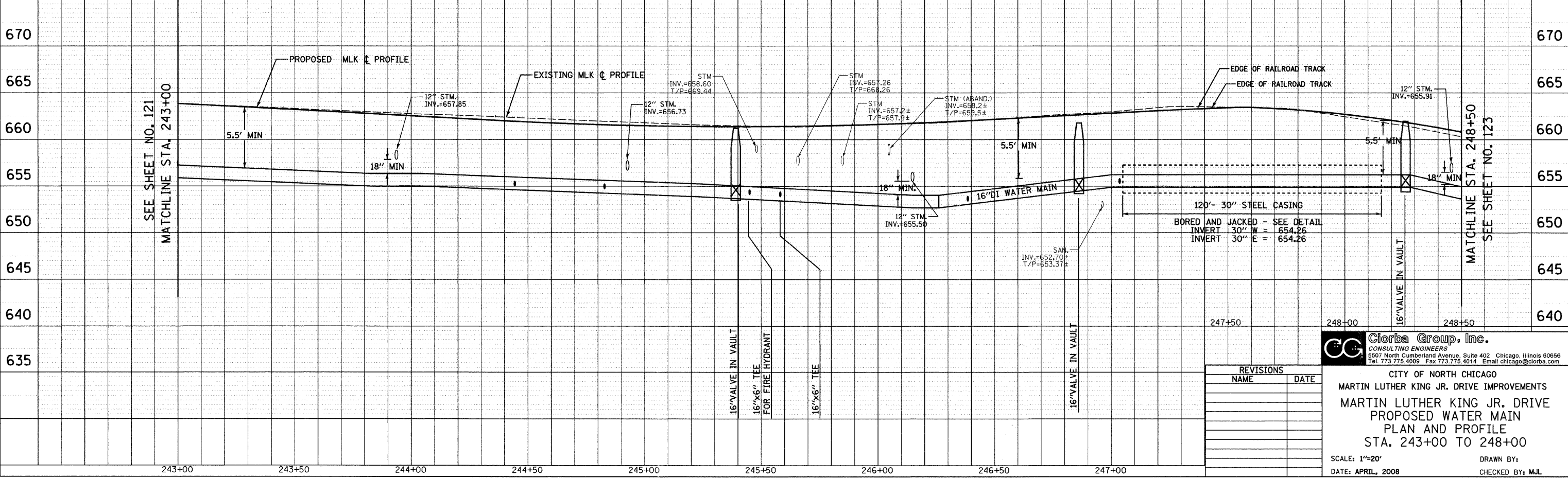


F.A.U. RTE.	SECTION	COUNTY	TOTAL SHEETS	SHEET NO.
1230	03-00159-00-PV	LAKE	262	122
STA. 243+00 TO STA. 248+00		FED. ROAD DIST. NO. 1 ILLINOIS FED. AID PROJECT		
CONTRACT: 83828				



NOTE:
 FOR PROPOSED STORM SEWER PLANS SEE SHEETS: 86 TO 99
 FOR PROPOSED SANITARY SEWER PLANS SEE SHEETS: 100 TO 110

0 50' 100' 1" = 20'



REVISIONS	
NAME	DATE

Clorba Group, Inc.
 CONSULTING ENGINEERS
 5507 North Cumberland Avenue, Suite 402 Chicago, Illinois 60656
 Tel. 773.775.4009 Fax 773.775.4014 Email: chicago@clorba.com

CITY OF NORTH CHICAGO
 MARTIN LUTHER KING JR. DRIVE IMPROVEMENTS
 MARTIN LUTHER KING JR. DRIVE
 PROPOSED WATER MAIN
 PLAN AND PROFILE
 STA. 243+00 TO 248+00

SCALE: 1"=20' DRAWN BY: M.J.L.
 DATE: APRIL, 2008 CHECKED BY: M.J.L.

PLAN	DATE
NO.	BY
NO.	BY
NO.	BY
NO.	BY

PROFILE	DATE
NO.	BY
NO.	BY
NO.	BY
NO.	BY

DATE: 7/1/2008
 TIME: 8:02:13 AM
 FILENAME: N:\PROJECTS\161\Design\water main\PLAN.T08.dgn