

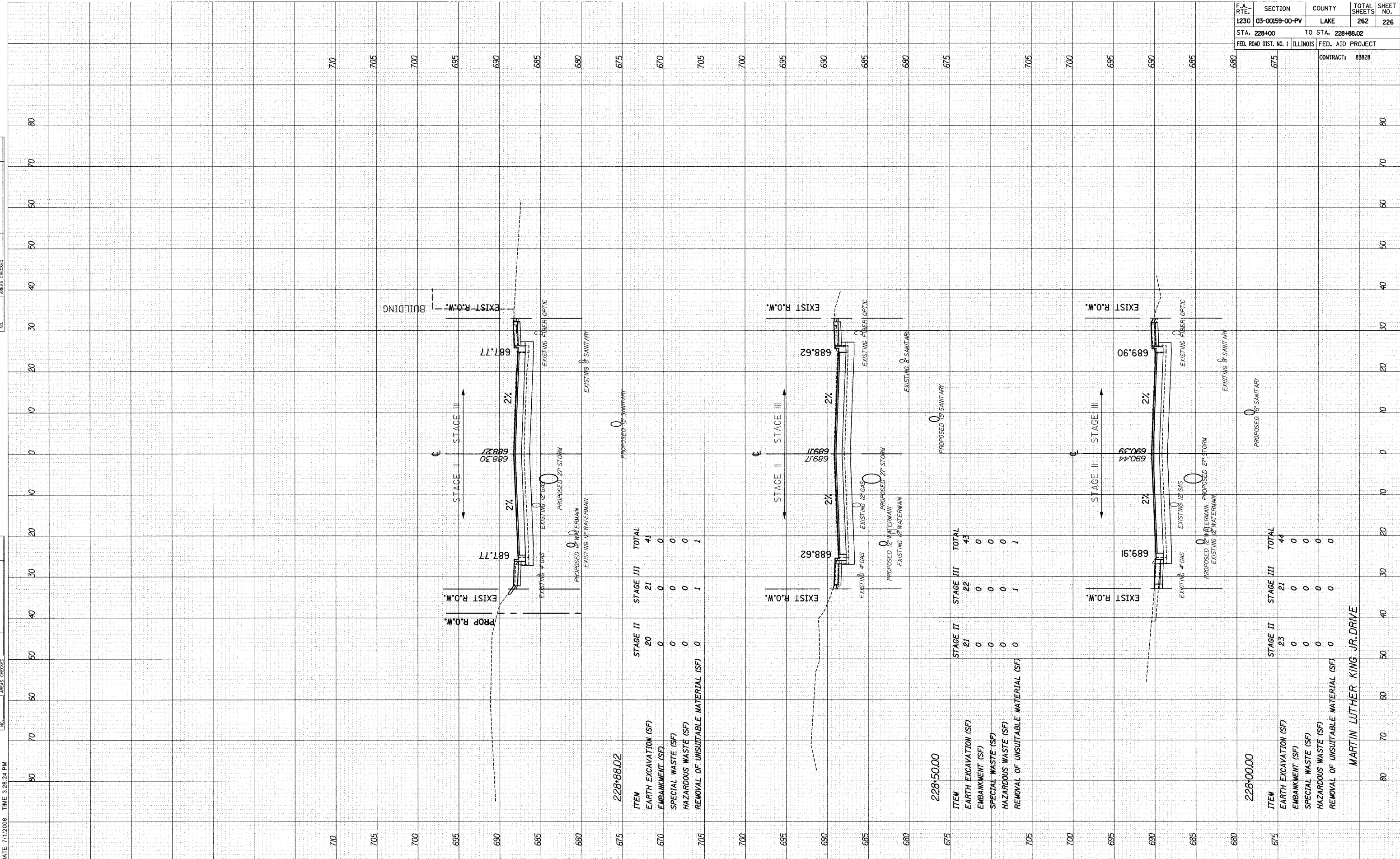
F.A. RTE.	SECTION	COUNTY	TOTAL SHEETS	SHEET NO.
1230	03-00159-00-PV	LAKE	262	226
STA. 228+00		TO STA. 228+88.02		
FED. ROAD DIST. NO. 1	ILLINOIS	FED. AID PROJECT		
		CONTRACT: 83828		

FINAL SURVEY	SURVEYED	BY	DATE
NOTE BOOK	PLOTTED		
NO.	TEMPLATE		
	AREAS CHECKED		

ORIGINAL SURVEY	SURVEYED	BY	DATE
NOTE BOOK	PLOTTED		
NO.	TEMPLATE		
	AREAS CHECKED		

DATE: 7/11/2008 TIME: 3:28:24 PM

FILENAME: N:\PROJ\5161\Design\Xsections\5161-mk-sheet.dgn



228+88.02

ITEM	STAGE II	STAGE III	TOTAL
EARTH EXCAVATION (SF)	20	21	41
EMBANKMENT (SF)	0	0	0
SPECIAL WASTE (SF)	0	0	0
HAZARDOUS WASTE (SF)	0	0	0
REMOVAL OF UNSUITABLE MATERIAL (SF)	0	1	1

228+50.00

ITEM	STAGE II	STAGE III	TOTAL
EARTH EXCAVATION (SF)	21	22	43
EMBANKMENT (SF)	0	0	0
SPECIAL WASTE (SF)	0	0	0
HAZARDOUS WASTE (SF)	0	0	0
REMOVAL OF UNSUITABLE MATERIAL (SF)	0	1	1

228+00.00

ITEM	STAGE II	STAGE III	TOTAL
EARTH EXCAVATION (SF)	23	21	44
EMBANKMENT (SF)	0	0	0
SPECIAL WASTE (SF)	0	0	0
HAZARDOUS WASTE (SF)	0	0	0
REMOVAL OF UNSUITABLE MATERIAL (SF)	0	0	0

MARTIN LUTHER KING JR. DRIVE