

STATE OF ILLINOIS
DEPARTMENT OF TRANSPORTATION
SIDEWALK ENHANCEMENT

VARIOUS ROUTES
SECTION 06-00032-00-SW
PROJECT NO. TE-00D7(26)
JOB NO. C-97-018-07
ITEP NO. 702012
CITY OF SULLIVAN
MOULTRIE COUNTY, ILLINOIS

FOR INDEX OF SHEETS
SEE SHEET 2

CONTRACT #9556I		ROUTE NO.	SECTION	COUNTY	TOTAL SHEETS	SHEET NO.
S.B.I.	F.A.	06-00032-	00-SW	MOULTRIE	24	1
FED. ROAD DIST. NO. 7		ILLINOIS		FED. AID PROJECT-		



SCALES

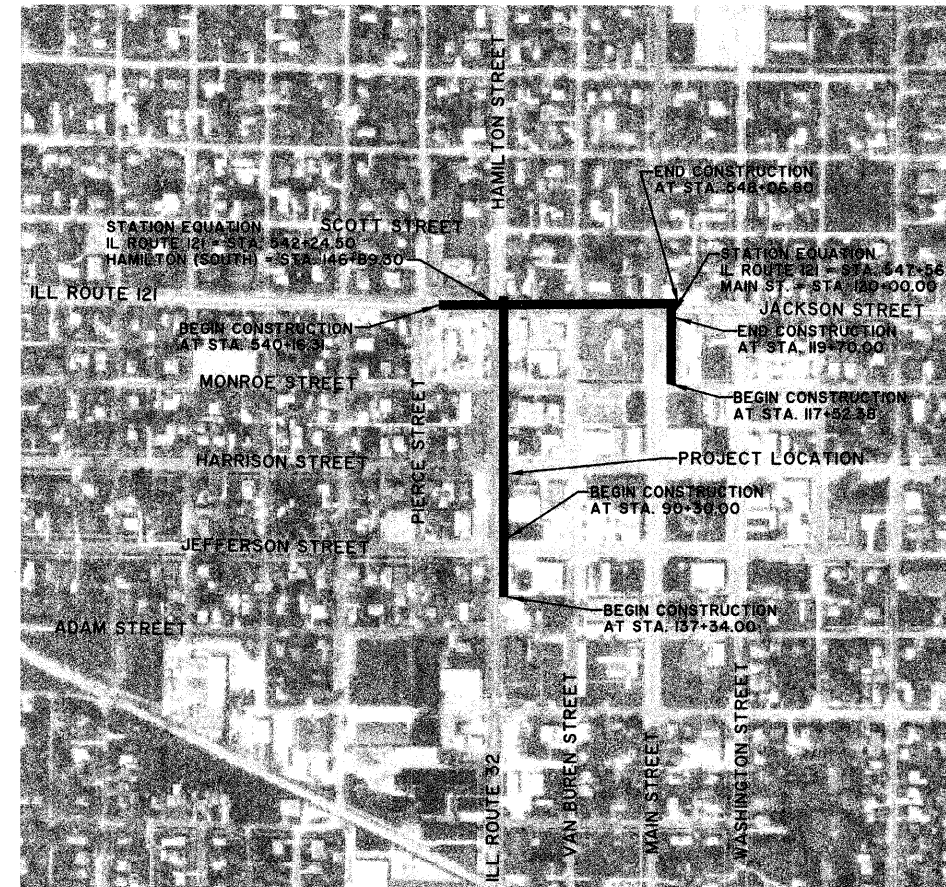
PLAN	
PROFILE (HORIZONTAL)	
PROFILE (VERTICAL)	
CROSS SECTIONS (HORIZONTAL)	
CROSS SECTIONS (VERTICAL)	

J.U.L.I.E.
JOINT UTILITY LOCATION INFORMATION FOR EXCAVATION
1-800-892-0123

UTILITY NOTE

THE LOCATIONS OF THOSE BURIED AND ABOVEGROUND UTILITIES SHOWN ARE APPROXIMATE, ARE SHOWN FOR CONTRACTOR INFORMATIONAL USE ONLY, AND ARE NOT TO BE REFERENCED FOR CONSTRUCTION PURPOSES. THE IMPLIED PRESENCE OR ABSENCE OF UTILITIES IS NOT TO BE CONSTRUED BY THE OWNER, ENGINEER, CONTRACTOR, OR SUBCONTRACTORS TO BE AN ACCURATE AND COMPLETE REPRESENTATION OF UTILITIES THAT MAY OR MAY NOT EXIST ON THE CONSTRUCTION SITE. BURIED AND ABOVEGROUND UTILITY LOCATION, IDENTIFICATION, AND MARKING ARE THE SOLE RESPONSIBILITY OF THE CONTRACTOR. REROUTING, DISCONNECTION, PROTECTION, ETC. OF ANY UTILITIES MUST BE COORDINATED BETWEEN THE CONTRACTOR, UTILITY COMPANY, AND OWNER. SITE SAFETY, INCLUDING THE AVOIDANCE OF HAZARDS ASSOCIATED WITH BURIED AND ABOVEGROUND UTILITIES, REMAIN THE SOLE RESPONSIBILITY OF THE CONTRACTOR. CONTRACTOR MUST CONTACT J.U.L.I.E. 48 HOURS PRIOR TO THE BEGINNING OF CONSTRUCTION.

Contract No. 9556I



LOCATION MAP
CITY OF SULLIVAN

LENGTH OF PROJECT

HAMILTON STREET	= 955.30 Feet (0.18 Mile)
JACKSON STREET	= 790.49 Feet (0.15 Mile)
MAIN STREET	= 217.62 Feet (0.04 Mile)
TOTAL PROJECT	= 1963.41 Feet (0.37 Mile)



APPROVED July 29 2008
Ann G. Shurt
MAYOR, CITY OF SULLIVAN

PASSED July 30 2008
Maureen East
DISTRICT SEVEN ENGINEER OF
LOCAL ROADS & STREETS

Releasing For
Bid Based on
Limited Review July 30 2008
Paul J. D. [Signature]
DEPUTY DIRECTOR OF HIGHWAYS,
REGION FOUR ENGINEER
STATE OF ILLINOIS
DEPARTMENT OF TRANSPORTATION

**SIDEWALK ENHANCEMENT
VARIOUS ROUTES
SECTION 06-00032-00-SW**

PLANS DATED:
JULY 22, 2008

MILANO & GRUNLOH ENGINEERS, LLC
84 WEST WASHINGTON
P.O. BOX 897
EFFINGHAM, ILLINOIS 62401
Phone: (217) 347-7262
(800) 677-2774
Fax #: (217) 342-3433
Web Address: www.mgengineers.com
Design Firm #: 184-00308

Lee R. Beckman
REGISTERED PROFESSIONAL ENGINEER OF ILLINOIS
P.E. No. 52890
My License Expires 11-30-09

File name: S:\DWG\06\06244\dwg\Title Sh1.dwg
Plot date: 07/22/08 at 10:50