

NOTE:
LIGHT POLE #5 OMITTED

LEGEND

⊕ PROPOSED LIGHT ASSEMBLY

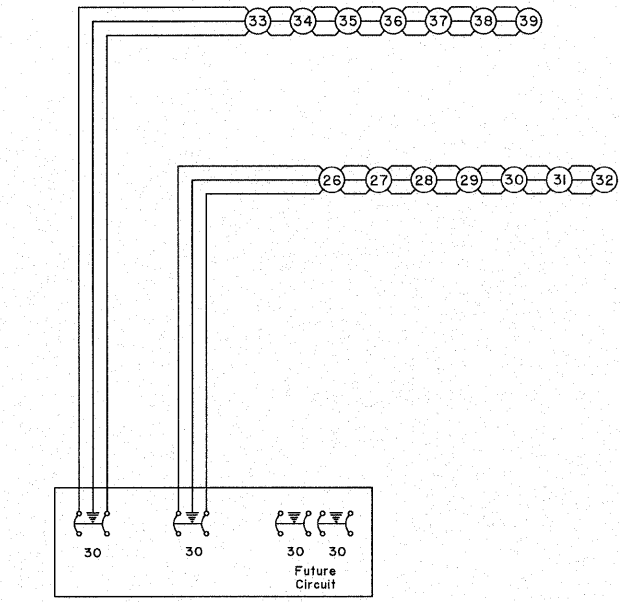
⊖ CIRCUIT BREAKER

30 CIRCUIT AMPERAGE

EXISTING

LIGHTING CONTROLLER A (LOCATION 1) w/PHOTO CELL

WIRING DIAGRAM



PROPOSED

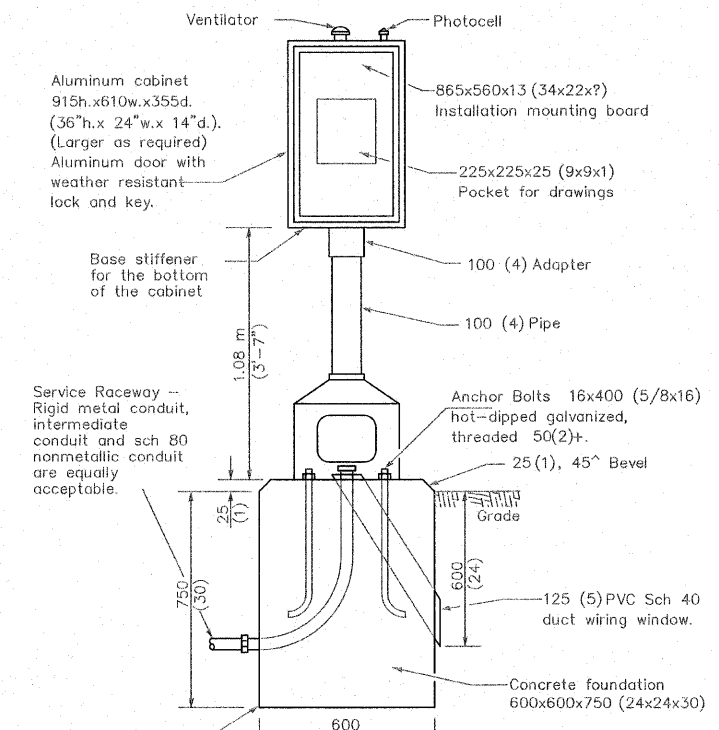
LIGHTING CONTROLLER B (LOCATION 2) w/PHOTO CELL

WIRING DIAGRAM

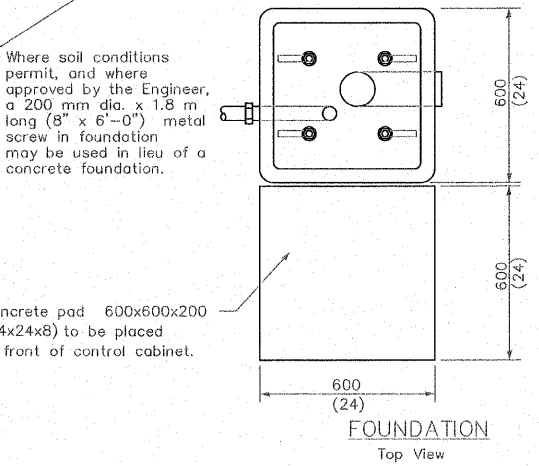
SCHEDULE OF LIGHTING FACILITIES

POINT	STATION	LT OR RT	DISTANCE FEET	DESCRIPTION
1	137+34	RT	150	EXISTING CONTROLLER (A)
2	138+32	RT	26	HANDHOLE
3	138+32	RT	22	POLE
4	139+20	RT	26	HANDHOLE
5	139+20	RT	22	OMITTED
6	139+20	LT	22	POLE
7	139+55	LT	22	POLE *
8	139+95	LT	22	POLE
9	139+55	RT	22	POLE
10	140+70	RT	22	POLE
11	141+05	RT	22	POLE
12	142+05	RT	22	POLE
13	142+60	RT	22	POLE *
14	143+15	RT	22	POLE
15	143+55	RT	22	POLE *
16	143+95	RT	22	POLE
17	145+06	RT	22	POLE
18	140+70	LT	22	POLE *
19	141+05	LT	22	POLE
20	142+05	LT	22	POLE
21	142+60	LT	22	POLE
22	143+55	LT	22	POLE
23	144+60	LT	22	POLE
24	145+60	LT	26	POLE
25	547+27	LT	34	PROPOSED CONTROLLER (B)
26	546+25	LT	22	POLE *
27	545+70	LT	22	POLE
28	545+14	LT	22	POLE *
29	544+54	LT	22	POLE
30	544+05	LT	22	POLE *
31	544+05	RT	22	POLE
32	543+71	LT	22	POLE
33	546+75	LT	22	POLE
34	547+15	LT	22	POLE
35	547+96	LT	22	POLE
36	547+96	RT	22	POLE
37	547+09	RT	22	POLE
38	546+35	RT	22	POLE
39	545+14	RT	22	POLE
40	137+35	RT	25	HANDHOLE

* SIDEWALK LIGHT ONLY



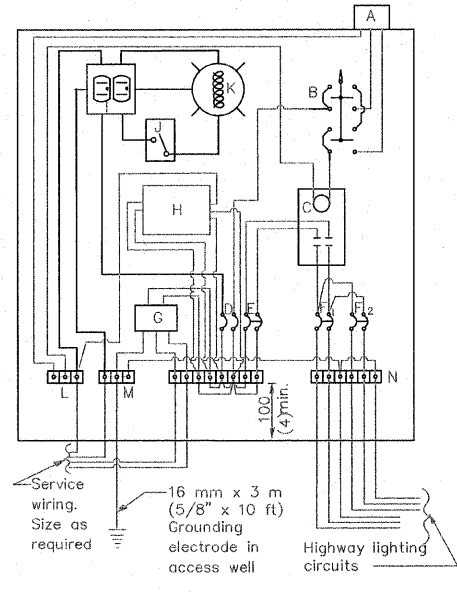
CONTROL INSTALLATION
Front View



FOUNDATION
Top View

Where soil conditions permit, and where approved by the Engineer, a 200 mm dia. x 1.8 m long (8" x 6'-0") metal screw in foundation may be used in lieu of a concrete foundation.

Concrete pad 600x600x200 (24x24x8) to be placed in front of control cabinet.



CONTROL SCHEMATIC

MATERIALS

- A Photocell w/ integral surge arrester (remote mount in urban areas)
 - B 3 position selector switch HAND-OFF-AUTO
 - C 2 pole, 100 amp*, electrically held contactor, 120V operating coil
 - D 15 amp, 1 pole, circuit breaker
 - E 60 amp*, 2 pole, main circuit breaker
 - F 20 amp*, 2 pole, branch circuit breaker (typ). 2 spare c.b. required but not shown
 - G Surge arrester
 - H Transformer (see notes), 1 KVA*, 240/480V primary, 120/240V sec, single phase
 - I GFCI duplex receptacle
 - J Single pole, single throw switch
 - K Shielded security fixture with 100W lamp
 - L Neutral bar
 - M Equipment ground bar
 - N Terminal block (typ)
- (* = Size larger or smaller as needed)

GENERAL NOTES

Locate service pole and control installation adjacent to R.O.W. line with a minimum distance of 9 m (30') from the edge of pavement. Locate in close proximity to the utility transformer so the service drop does not exceed 46 m (150ft) and the total distance of overhead and underground cable (utility transformer to lighting controller) does not exceed 76 m (250ft). Exact location shall be established by the Engineer.

Wiring shall be panel board fashion. All bends shall be right angles. All runs shall vertical or parallel to panel board. Wires shall be grouped or laced.

All control installation components shall be U.L. listed.

Add receptacle, light, and switch in control cabinet, when specified.

For 480 V service, a step down transformer (dashed lines) is required. Raceways shall terminate 75 (3) above top of concrete foundation.

Label equipment ground buss and neutral buss.

- 240 V. SERVICE
- 480 V. SERVICE

All dimensions are in millimeters (inches) unless otherwise shown.

MILANO & GRUNLOH ENGINEERS, LLC
 14 WEST WASHINGTON
 P.O. BOX 897
 EFFINGHAM, ILLINOIS 62401
 Phone: (217) 547-7262
 (800) 677-2714
 Fax #: (217) 545-3433
 Web Address: www.mgsengineers.com
 Design Firm #: 184-00308
 File name: S:\06\06244\dwg\Lighting Detail.dwg
 Plot date: 03/21/08 at 11:15

LIGHTING DETAIL SHEET
 SIDEWALK ENHANCEMENT
 CITY OF SULLIVAN
 SECTION 06-00032-00-SW
 MOULTRIE COUNTY, ILLINOIS