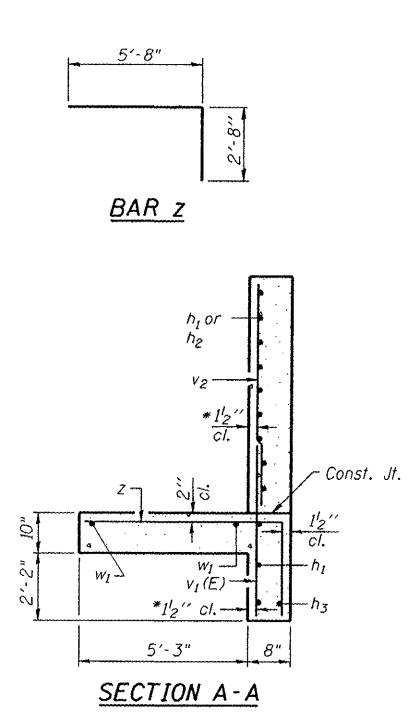
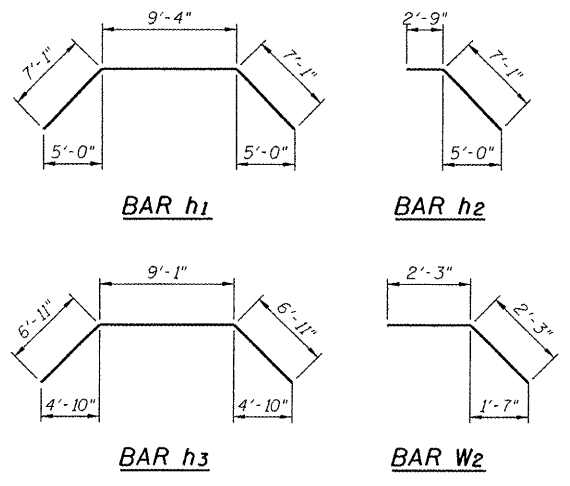
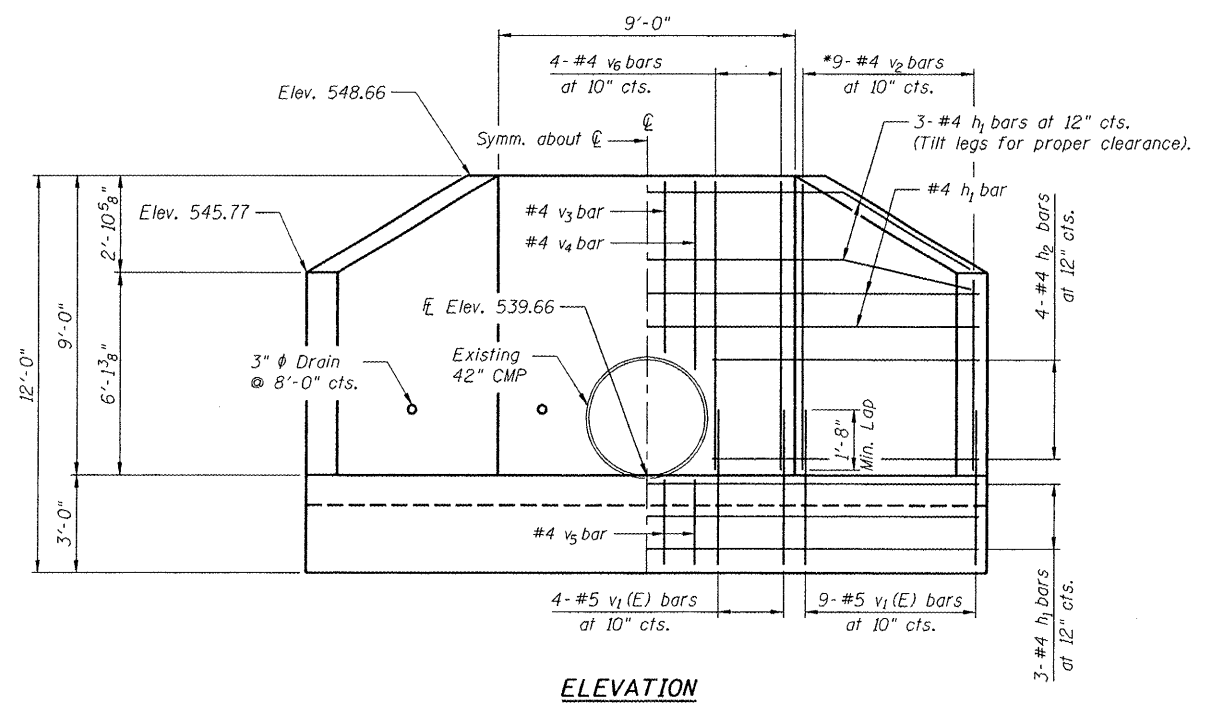


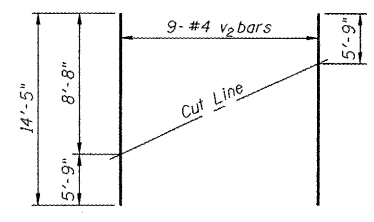
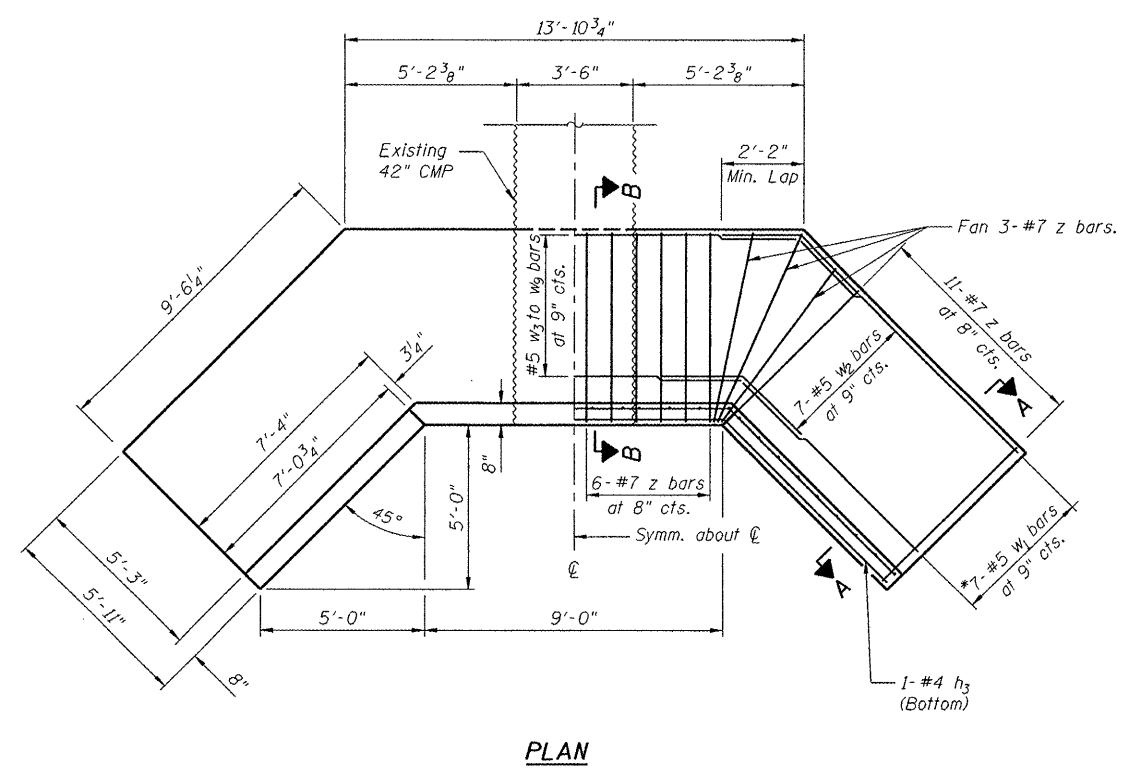
F&P ROUTE	SECTION	COUNTY	TOTAL SHEETS	SHEET NO
793 9392	05-00025-00-TL 07-00025-01-WR	MADISON	127	80
STA.	TO STA.			

CONTRACT NO. 97352

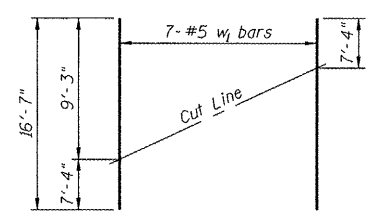
*See Field Cutting Diagram



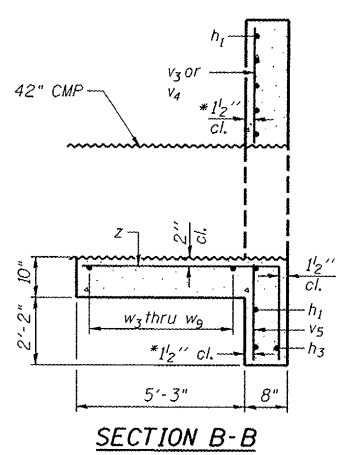
* v bars shall not be placed more than 1/2" cl. from back face of wingwall.



Order v₂ full length. Cut as shown and use remainder of bars in other wingwall.



Order w₁ full length. Cut as shown and use remainder of bars in other wingwall footing.



* v bars shall not be placed more than 1/2" cl. from back face of wingwall.

BILL OF MATERIAL

Bar	No.	Size	Length	Shape
h ₁	8	#4	23'-6"	┌
h ₂	8	#4	9'-10"	┌
h ₃	1	#4	22'-11"	┌
v ₁ (E)	26	#5	4'-9"	—
v ₂	9	#4	14'-5"	—
v ₃	2	#4	5'-1"	—
v ₄	2	#4	5'-8"	—
v ₅	4	#4	2'-7"	—
v ₆	8	#4	8'-8"	—
w ₁	7	#5	16'-7"	—
w ₂	14	#5	4'-6"	┌
w ₃	1	#5	13'-9"	—
w ₄	1	#5	13'-1"	—
w ₅	1	#5	12'-5"	—
w ₆	1	#5	11'-9"	—
w ₇	1	#5	11'-1"	—
w ₈	1	#5	10'-5"	—
w ₉	1	#5	9'-9"	—
Z	40	#7	8'-4"	┌
Concrete Box Culverts				Cu. Yd. 10.9
Reinforcement Bars, Epoxy Coated				Pound 130
Reinforcement Bars				Pound 1300

Reinforcement bars shall conform to the requirements of ASTM A706 Gr. 60. See Special Provisions.

Reinforcement bars designated (E) shall be epoxy coated.

DESIGN STRESSES

f_y = 60,000 psi
f'c = 3,500 psi

**CAST-IN-PLACE REINFORCED CONCRETE END SECTION 42", SPECIAL
STA 111+68.98 48.82' LT**

REVISIONS	
NAME	DATE

MISCELLANEOUS DETAILS

US 40 AND
TROY-O'FALLON ROAD IMPROVEMENTS
CITY OF TROY
MADISON COUNTY, ILLINOIS

P:\050162\dwg\050162\DET\01.dwg 4/16/2008 9:02:13 AM CDT