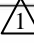


CODE NO.	ITEM	UNIT	TOTAL QUANTITY	CONSTRUCTION CODE		
				80% FED 20% STATE ROADWAY 0004	80% FED 20% STATE BRIDGE 0013 016-0777	100% CITY OF BLUE ISLAND HIGHWAY LIGHTING 0021
				URBAN		
63200310	GUARDRAIL REMOVAL	FOOT	253	253		
* 66900200	NON-SPECIAL WASTE DISPOSAL	CU YD	497	497		
* 66900530	SOIL DISPOSAL ANALYSIS	EACH	3	3		
* 66901001	REGULATED SUBSTANCES PRE-CONSTRUCTION PLAN	LSUM	1	1		
* 66901002	ON-SITE MONITORING OF REGULATED SUBSTANCES	CAL DA	456	456		
* 66901003	REGULATED SUBSTANCES FINAL CONSTRUCTION REPORT	LSUM	1	1		
X6700410	ENGINEER'S FIELD OFFICE, TYPE A (SPECIAL) 	CAL MO	20	20		
67100100	MOBILIZATION	L SUM	1	1		
70103815	TRAFFIC CONTROL SURVEILLANCE	CAL DA	456	456		
70107025	CHANGEABLE MESSAGE SIGN	CAL DA	3600	3600		
70300520	PAVEMENT MARKING TAPE, TYPE III4"	FOOT	19645	19645		
70400100	TEMPORARY CONCRETE BARRIER	FOOT	2612.5	2612.5		
70400200	RELOCATE TEMPORARY CONCRETE BARRIER	FOOT	2537.5	2537.5		
70600255	IMPACT ATTENUATORS, TEMPORARY (FULLY REDIRECTIVE, NARROW), TEST LEVEL 2	EACH	2	2		

\* SPECIALTY ITEMS

FILE NAME = W:\191-132.IDOT.Western.Ave\0ADD Sheets\0160K72 - sht - ssp.dgn

 <b>BLA, Inc.</b> ITASCA, ILLINOIS	USER NAME = WTeng	DESIGNED - MTC	REVISED -	<b>STATE OF ILLINOIS</b> <b>DEPARTMENT OF TRANSPORTATION</b>	<b>WESTERN AVENUE OVER CAL-SAG CHANNEL</b> <b>SUMMARY OF QUANTITIES</b>			F.A.P. RTE. 370	SECTION 0103BR-1	COUNTY COOK	TOTAL SHEETS 184	SHEET NO. 10
	PLOT SCALE = 100.0000' / in.	CHECKED - JIP	REVISED -		SCALE: N.T.S.	SHEET 8	OF 14 SHEETS	STA. N/A TO STA. N/A	<b>CONTRACT NO. 60K72</b>		ILLINOIS FED. AID PROJECT	
PLOT DATE = 6/20/2019	DATE - 06/20/2019	REVISED -										
REV. 9/9/19 REV. 8/7/19												

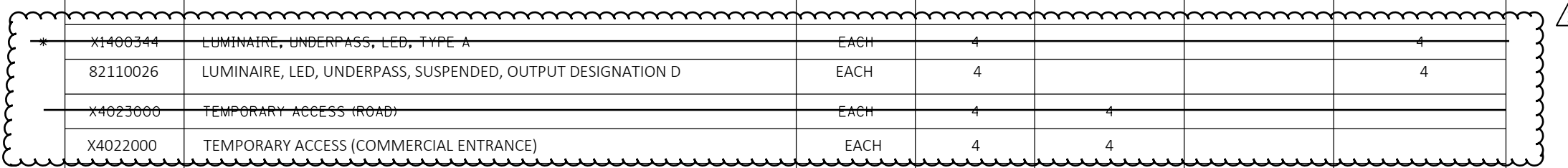
CODE NO.	ITEM	UNIT	URBAN TOTAL QUANTITY	CONSTRUCTION CODE		
				80% FED 20% STATE ROADWAY 0004	80% FED 20% STATE BRIDGE 0013 016-0777	100% CITY OF BLUE ISLAND HIGHWAY LIGHTING 0021
70600322	IMPACT ATTENUATORS, RELOCATE (FULLY REDIRECTIVE, NARROW), TEST LEVEL 2	EACH	2	2		
* 72000100	SIGN PANEL - TYPE 1	SQ FT	14	14		
* 72501000	TERMINAL MARKER - DIRECT APPLIED	EACH	1	1		
* 72900100	METAL POST - TYPE A	FOOT	50	50		
* 78000100	THERMOPLASTIC PAVEMENT MARKING - LETTERS AND SYMBOLS	SQ FT	11	11		
* 78000200	THERMOPLASTIC PAVEMENT MARKING - LINE 4"	FOOT	674	674		
* 78000400	THERMOPLASTIC PAVEMENT MARKING - LINE 6"	FOOT	635	635		
* 78000600	THERMOPLASTIC PAVEMENT MARKING - LINE 12"	FOOT	127	127		
* 78008200	POLYUREA PAVEMENT MARKING TYPE I - LETTERS AND SYMBOLS	SQ FT	67	67		
* 78008210	POLYUREA PAVEMENT MARKING TYPE I - LINE 4"	FOOT	5030	5030		
* 78008230	POLYUREA PAVEMENT MARKING TYPE I - LINE 6"	FOOT	3413	3413		
* 78100100	RAISED REFLECTIVE PAVEMENT MARKER	EACH	86	86		
* 78100300	REPLACEMENT REFLECTOR	EACH	10	10		
* 78200005	GUARDRAIL REFLECTORS, TYPE A	EACH	4	4		

\* SPECIALTY ITEMS

FILE NAME = W:\191-132.IDOT.Western.Ave\LOAD Sheets\DRK72 - sht - sqd.dgn

 <b>BLA, Inc.</b> ITASCA, ILLINOIS	USER NAME = WTeng	DESIGNED - MTC	REVISED -	<b>STATE OF ILLINOIS</b> <b>DEPARTMENT OF TRANSPORTATION</b>	<b>WESTERN AVENUE OVER CAL-SAG CHANNEL</b> <b>SUMMARY OF QUANTITIES</b>			F.A.P. RTE. = 370	SECTION = 0103BR-1	COUNTY = COOK	TOTAL SHEETS = 184	SHEET NO. = 11
	PLOT SCALE = 100.0000' / in.	CHECKED - JIP	REVISED -		SCALE: N.T.S.	SHEET 9 OF 14 SHEETS	STA. N/A TO STA. N/A	<b>CONTRACT NO. 60K72</b>				
PLOT DATE = 6/20/2019	DATE - 06/20/2019	REVISED -	ILLINOIS FED. AID PROJECT									
 REV. 9/11/19												

CODE NO.	ITEM	UNIT	TOTAL QUANTITY	CONSTRUCTION CODE		
				80% FED 20% STATE ROADWAY 0004	80% FED 20% STATE BRIDGE 0013 016-0777	100% CITY OF BLUE ISLAND HIGHWAY LIGHTING 0021
				URBAN		
X0327357	CONSTRUCTION VIBRATION MONITORING	L SUM	1		1	
X0327979	PAVEMENT MARKING REMOVAL - GRINDING	SQ FT	1252	1252		
X0327980	PAVEMENT MARKING REMOVAL - WATER BLASTING	SQ FT	581	581		
* X1400203	LUMINAIRE, LED, HORIZONTAL MOUNT, TYPE B	EACH	10			10
* X1400344	LUMINAIRE, UNDERPASS, LED, TYPE A	EACH	4			4
82110026	LUMINAIRE, LED, UNDERPASS, SUSPENDED, OUTPUT DESIGNATION D	EACH	4			4
X4023000	TEMPORARY ACCESS (ROAD)	EACH	4	4		
X4022000	TEMPORARY ACCESS (COMMERCIAL ENTRANCE)	EACH	4	4		
+ X5090810	PEDESTRIAN RAIL (SPECIAL)	FOOT	265		265	
X5210150	HIGH LOAD MULTI-ROTATIONAL BEARINGS, GUIDED EXPANSION, 400K	EACH	10		10	
△ X5537600	STORM SEWERS TO BE CLEANED 8"	FOOT	5	5		
△ X5537700	STORM SEWERS TO BE CLEANED 10"	FOOT	5	5		
X6030310	FRAMES AND LIDS TO BE ADJUSTED (SPECIAL)	EACH	4	4		
X6640304	CHAIN LINK FENCE TO BE REMOVED AND RE-ERECTED	FOOT	388	388		
X7010216	TRAFFIC CONTROL AND PROTECTION, (SPECIAL)	L SUM	1	1		
X7030005	TEMPORARY PAVEMENT MARKING REMOVAL	SQ FT	6548	6548		
X7040600	FURNISH TEMPORARY CONCRETE BARRIER	FOOT	37.5	37.5		



+ 100% CITY OF BLUE ISLAND COST

△ NON-PARTICIPATION (100% STATE)

\* SPECIALTY ITEMS

FILE NAME = M:\191-132-1001-Western-Ave-CADD-Sheets\0160K72 - sht - sq.dgn

	USER NAME = WTeng	DESIGNED - MTC	REVISED -
		DRAWN - MTC	REVISED -
	PLOT SCALE = 100.0000' / in.	CHECKED - JIP	REVISED -
	PLOT DATE = 6/20/2019	DATE - 06/20/2019	REVISED -

STATE OF ILLINOIS  
DEPARTMENT OF TRANSPORTATION

WESTERN AVENUE OVER CAL-SAG CHANNEL			
SUMMARY OF QUANTITIES			
SCALE: N.T.S.	SHEET 12 OF 14 SHEETS	STA. N/A TO STA. N/A	

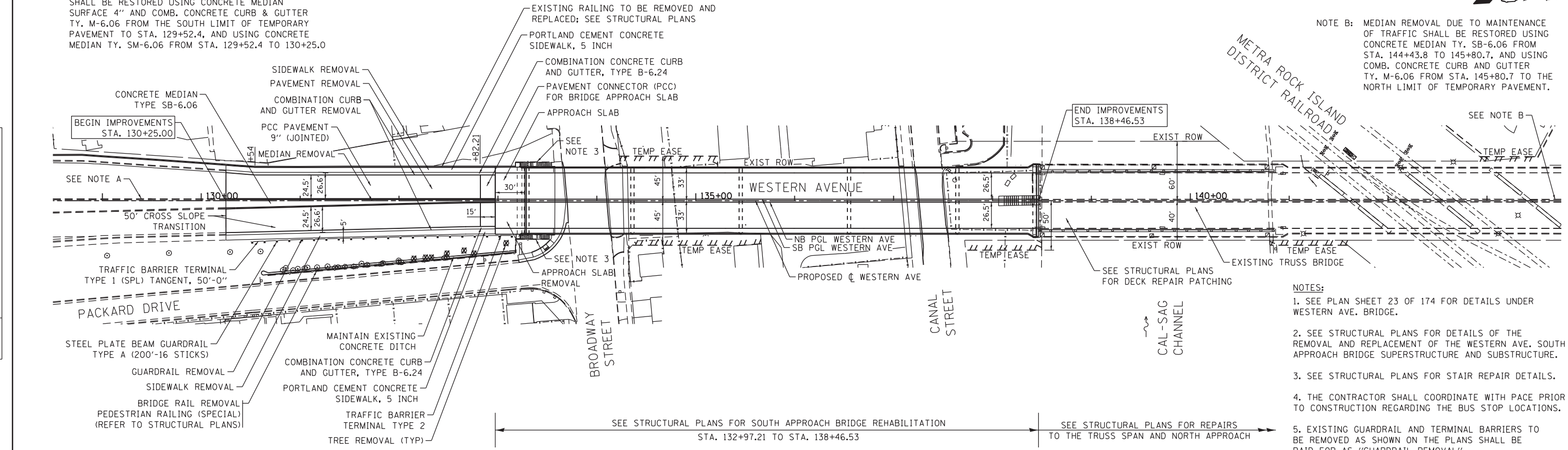
F.A.P. RTE. 370	SECTION 0103BR-1	COUNTY COOK	TOTAL SHEETS 184	SHEET NO. 14
CONTRACT NO. 60K72				
ILLINOIS FED. AID PROJECT				

NOTE A: MEDIAN REMOVAL DUE TO MAINTENANCE OF TRAFFIC SHALL BE RESTORED USING CONCRETE MEDIAN SURFACE 4" AND COMB. CONCRETE CURB & GUTTER TY. M-6.06 FROM THE SOUTH LIMIT OF TEMPORARY PAVEMENT TO STA. 129+52.4, AND USING CONCRETE MEDIAN TY. SM-6.06 FROM STA. 129+52.4 TO 130+25.0

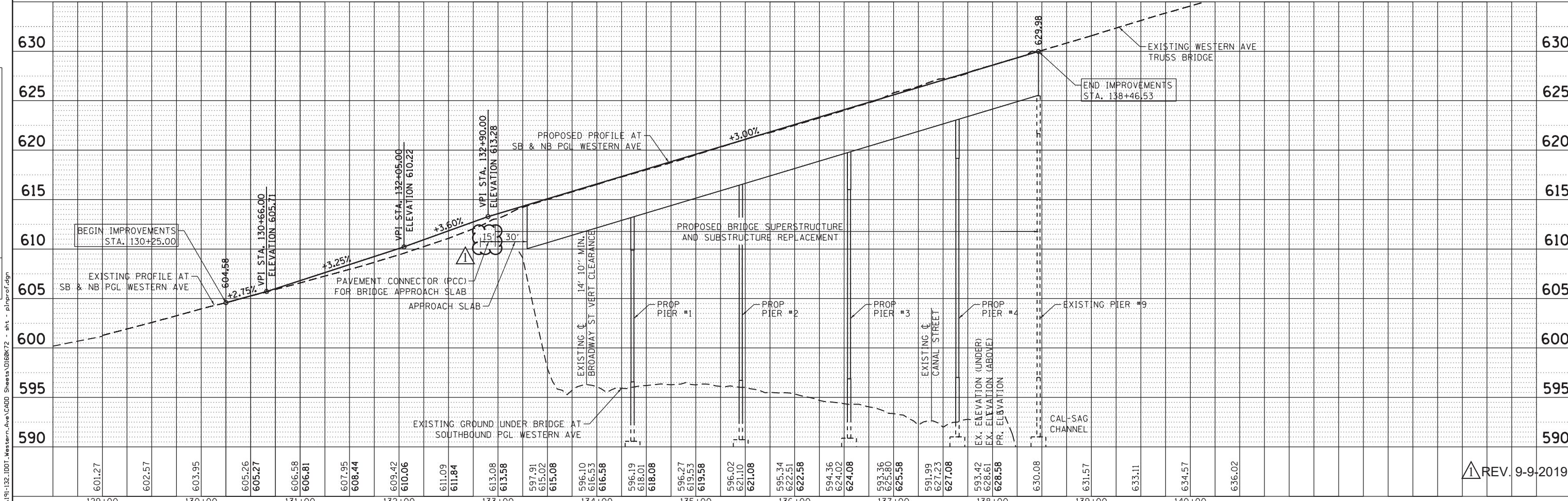
NOTE B: MEDIAN REMOVAL DUE TO MAINTENANCE OF TRAFFIC SHALL BE RESTORED USING CONCRETE MEDIAN TY. SB-6.06 FROM STA. 144+43.8 TO 145+80.7, AND USING COMB. CONCRETE CURB AND GUTTER TY. M-6.06 FROM STA. 145+80.7 TO THE NORTH LIMIT OF TEMPORARY PAVEMENT.

DATE	
BY	
PLAN	SURVEYED
	NOTED
	ALIGNED
	CHECKED
	DESIGNED
	FILED
	NO.

DATE	
BY	
PROFILE	SURVEYED
	NOTED
	GRADES
	CHECKED
	STRUCTURE
	NOTATIONS
	CHD
	NO.



- NOTES:
1. SEE PLAN SHEET 23 OF 174 FOR DETAILS UNDER WESTERN AVE. BRIDGE.
  2. SEE STRUCTURAL PLANS FOR DETAILS OF THE REMOVAL AND REPLACEMENT OF THE WESTERN AVE. SOUTH APPROACH BRIDGE SUPERSTRUCTURE AND SUBSTRUCTURE.
  3. SEE STRUCTURAL PLANS FOR STAIR REPAIR DETAILS.
  4. THE CONTRACTOR SHALL COORDINATE WITH PACE PRIOR TO CONSTRUCTION REGARDING THE BUS STOP LOCATIONS.
  5. EXISTING GUARDRAIL AND TERMINAL BARRIERS TO BE REMOVED AS SHOWN ON THE PLANS SHALL BE PAID FOR AS "GUARDRAIL REMOVAL".



129+00	130+00	131+00	132+00	133+00	134+00	135+00	136+00	137+00	138+00	139+00	140+00																																						
601.27	602.57	603.95	605.26	605.27	606.58	606.81	607.95	608.44	609.42	610.06	611.09	611.84	613.08	613.58	597.91	615.02	615.08	596.10	616.53	616.58	596.19	618.01	618.08	596.27	619.53	619.58	596.02	621.10	621.08	595.34	622.51	622.58	594.36	624.02	624.08	593.36	625.80	625.58	591.99	627.23	627.08	593.42	628.61	628.58	630.08	631.57	633.11	634.57	636.02

**BLA, Inc.**  
ITASCA, ILLINOIS

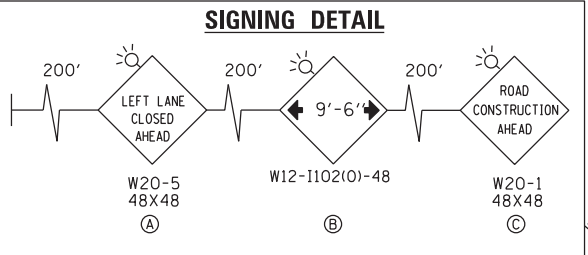
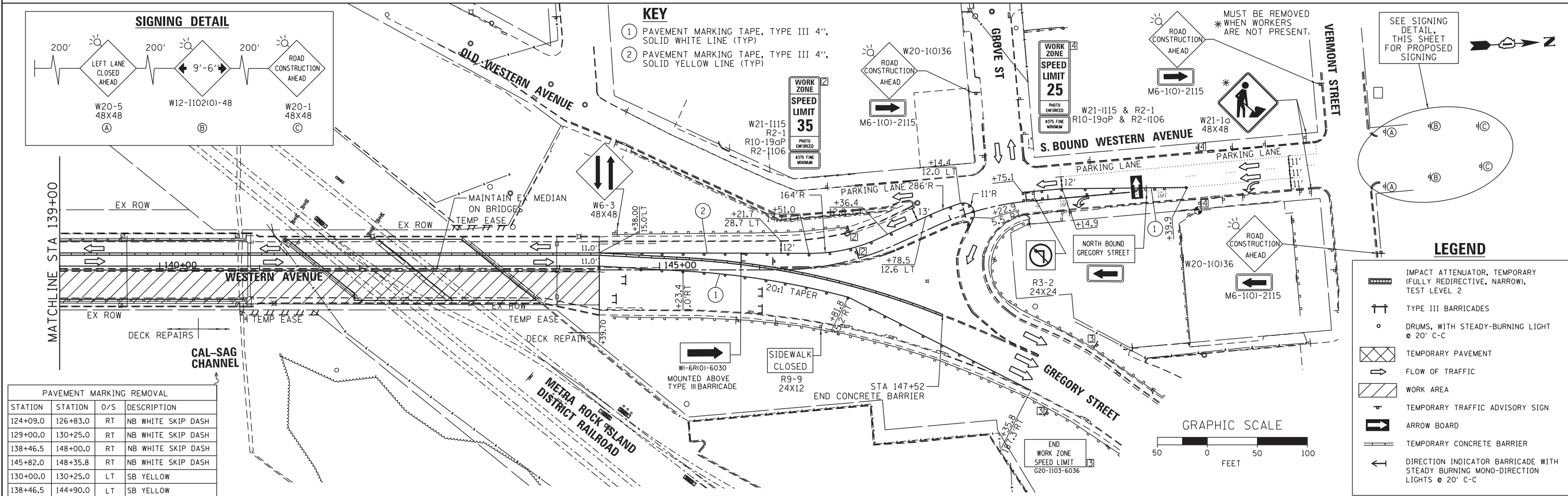
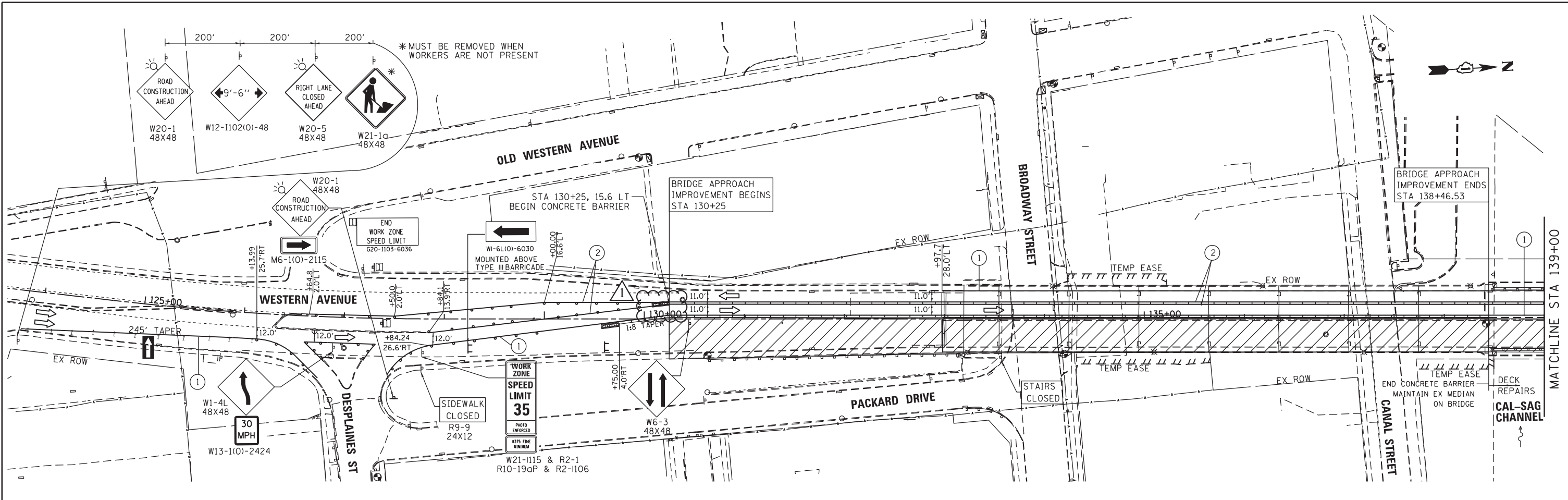
USER NAME = WTeng	DESIGNED - MTC	REVISED -
	DRAWN - MTC	REVISED -
PLOT SCALE = 100.0000' / in.	CHECKED - JIP	REVISED -
PLOT DATE = 9/9/2019	DATE - 06/20/2019	REVISED -

**STATE OF ILLINOIS**  
**DEPARTMENT OF TRANSPORTATION**

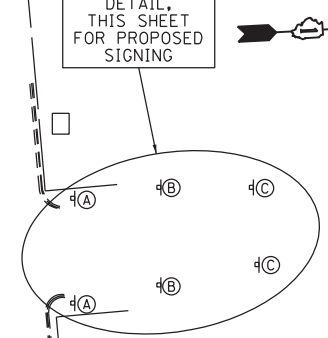
**WESTERN AVENUE OVER CAL-SAG CHANNEL**  
**PLAN AND PROFILE**  
VERT: 1"=5'  
SCALE: HORZ: 1"=50' SHEET 1 OF 1 SHEETS STA. 129+00 TO STA. 144+00

F.A.P. RTE.	SECTION	COUNTY	TOTAL SHEETS	SHEET NO.
370	0103BR-1	COOK	184	22
CONTRACT NO. 60K72				
ILLINOIS FED. AID PROJECT				

REV. 9-9-2019



- KEY**
- ① PAVEMENT MARKING TAPE, TYPE III 4", SOLID WHITE LINE (TYP)
  - ② PAVEMENT MARKING TAPE, TYPE III 4", SOLID YELLOW LINE (TYP)



PAVEMENT MARKING REMOVAL

STATION	STATION	O/S	DESCRIPTION
124+09.0	126+83.0	RT	NB WHITE SKIP DASH
129+00.0	130+25.0	RT	NB WHITE SKIP DASH
138+46.5	148+00.0	RT	NB WHITE SKIP DASH
145+82.0	148+35.8	RT	NB WHITE SKIP DASH
130+00.0	130+25.0	LT	SB YELLOW
138+46.5	144+90.0	LT	SB YELLOW

FILE NAME: 1060000.dwg  
 SCALE: AS SHOWN  
 USER: MGS



2600 Warrenville Road, Suite 203, Downers Grove, IL 60515  
 630.705.0110 voice, 630.839.2566 fax  
 www.mps-il.com  
**MILLENNIA PROFESSIONAL SERVICES**

DESIGNED - MG	REVISED -
DRAWN - TVN	REVISED -
CHECKED - TVN	REVISED -
DATE - 09/26/2017	REVISED -

**STATE OF ILLINOIS  
 DEPARTMENT OF TRANSPORTATION**

**WESTERN AVENUE OVER CAL SAG CHANNEL  
 SUGGESTED MAINTENANCE OF TRAFFIC - STAGE II**

SCALE: 1"=50' SHEET NO. OF SHEETS STA. TO STA.

F.A.P. RTE. 370	SECTION 0103BR-1	COUNTY COOK	TOTAL SHEETS 184	SHEET NO. 28
CONTRACT NO. 60K72				
FED. ROAD DIST. NO. 1 ILLINOIS FED. AID PROJECT				

REVISED ENTIRE SHEET 9/11/19