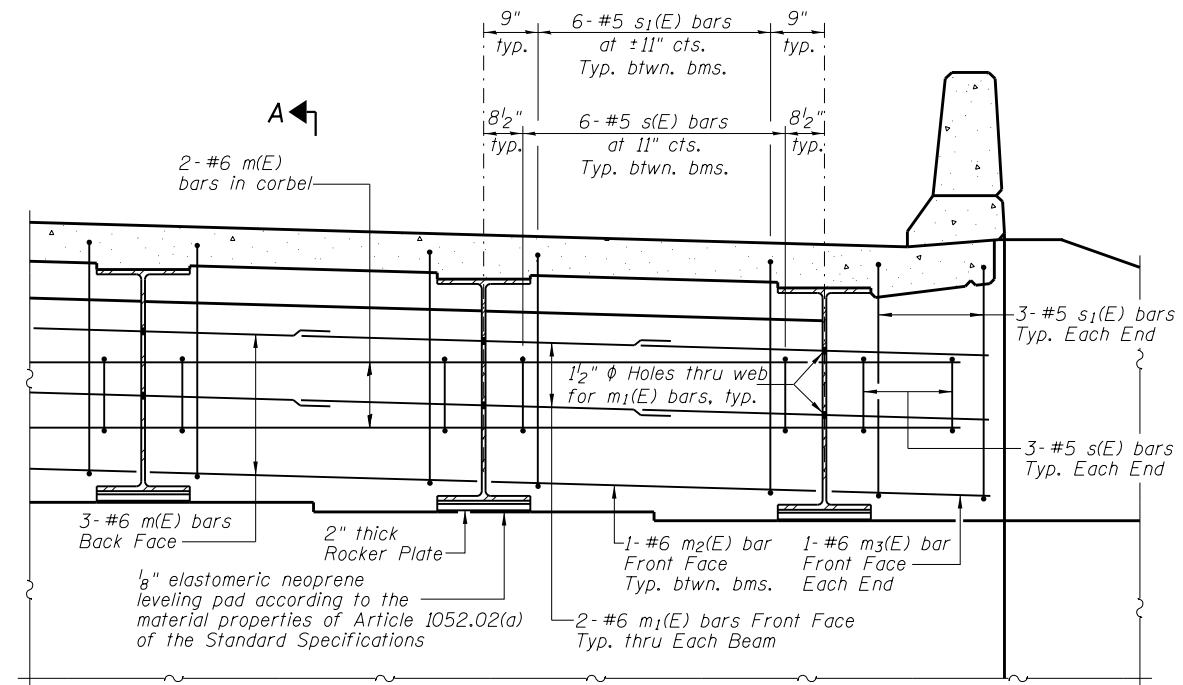


FILE NAME = p:\planning\commodor\illinois\gov\p\w\DOT\Documents\DOT\Projects\District 4\Projects\04\_68758\CADD\Drawings\IL78 Structural - IDOT Copies\diaphragm.dgn

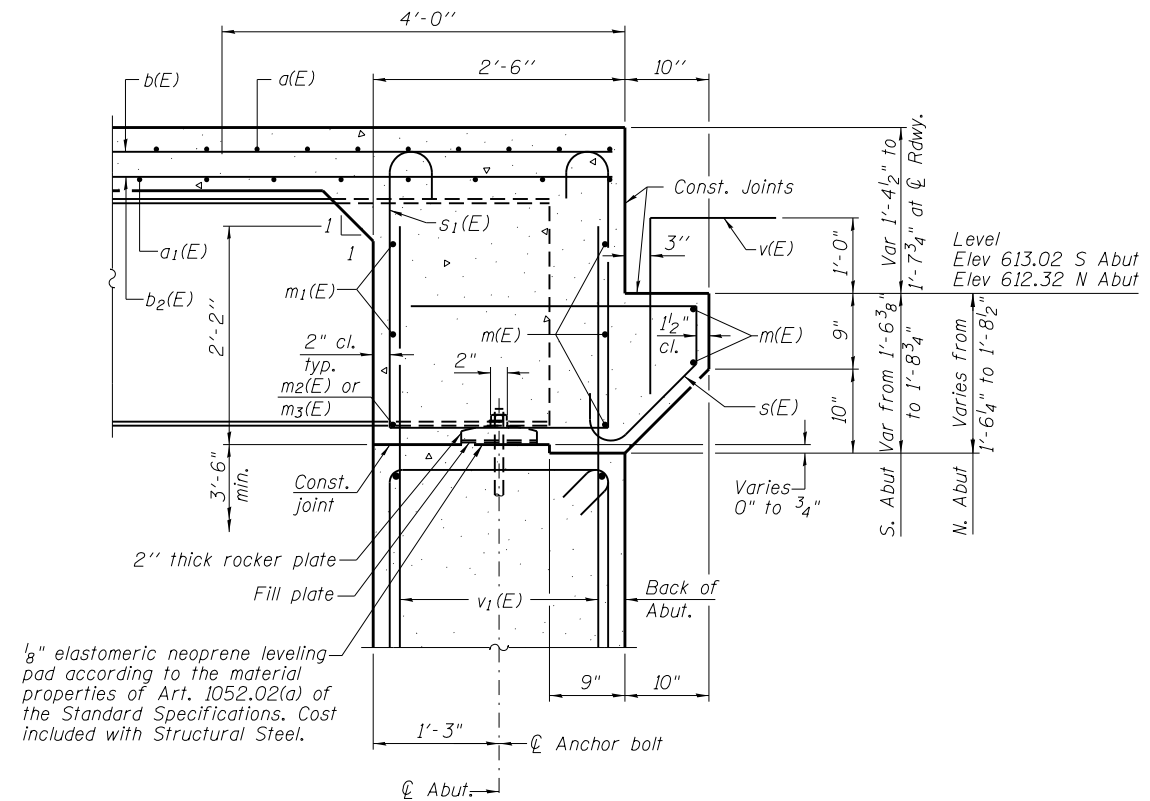


**DIAPHRAGM ELEVATION AT ABUTMENT**

Notes:  
 Reinforcement bars in diaphragm are billed with superstructure on sheet 8 of 22  
 Concrete in diaphragm is included with Concrete Superstructure on sheet 8 of 22  
 For details of bars s(E) & s1(E) see sheet 8 of 22  
 The s(E) and s1(E) bars shall be placed parallel to the beams. Spacing for these bars shall be at right angles to the beams.

**MINIMUM BAR LAP**

#6 Bar = 3'-4"



**SECTION A-A**