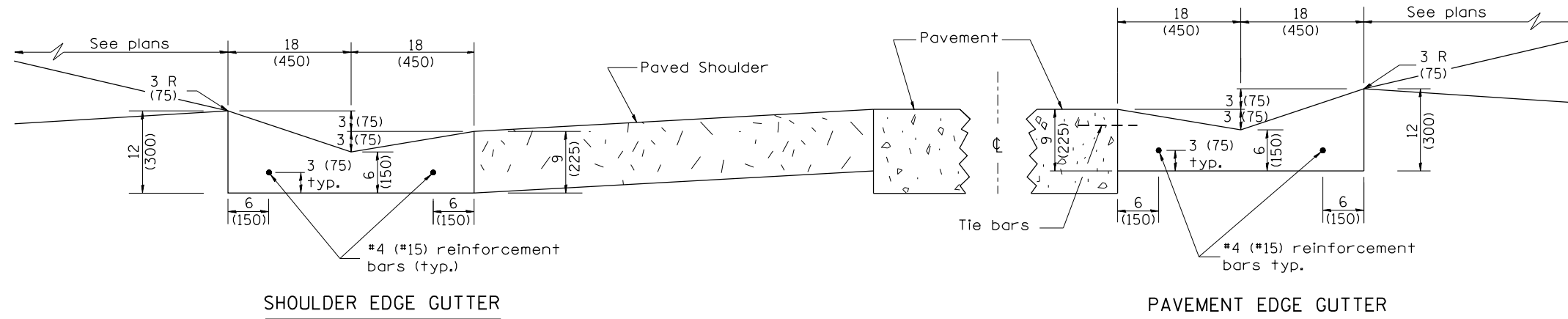


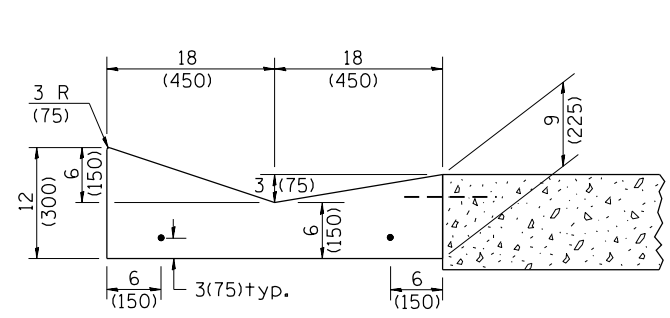
DESIGNER NOTES:  
 1. INCLUDE STATE STANDARD 420001.  
 2. PAY ITEM FOR INLETS, OUTLETS, AND ENTRANCES IS X6060097 CLASS SI CONCRETE (OUTLET), SPECIAL



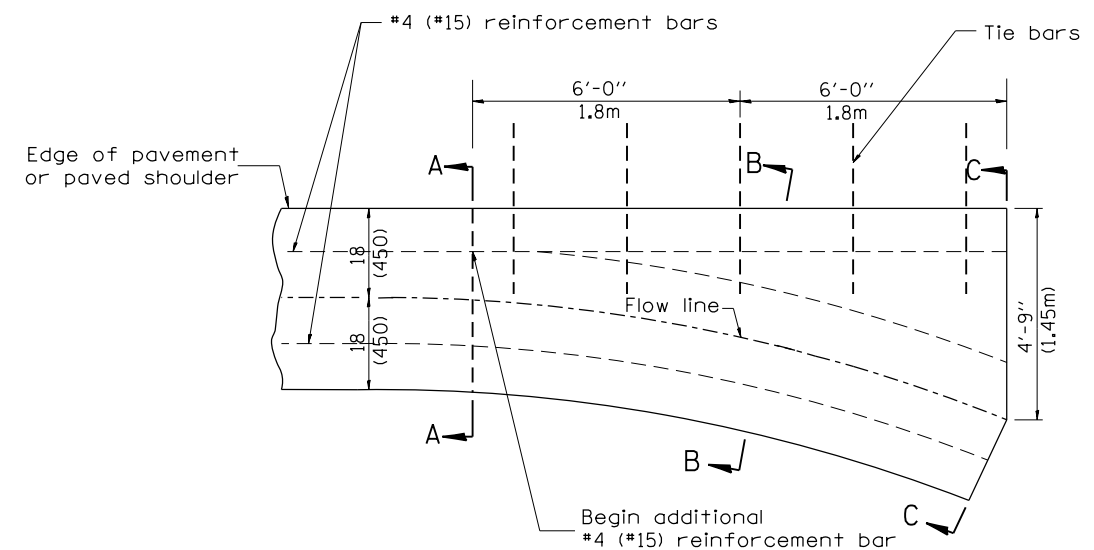
SHOULDER EDGE GUTTER

PAVEMENT EDGE GUTTER

CONCRETE GUTTER, TYPE A, (SPECIAL)

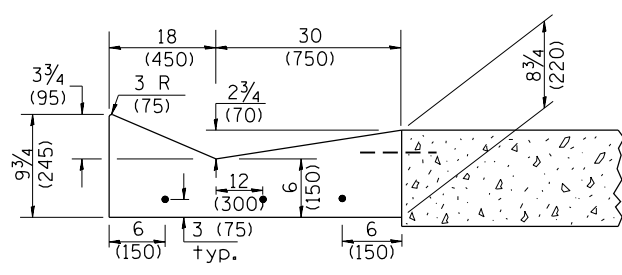


SECTION A-A

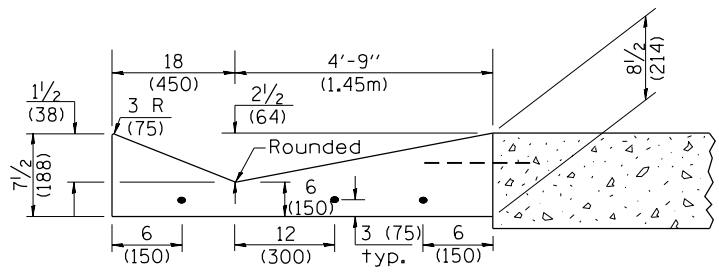


PLAN

**QUANTITY**  
 Section C-C to A-A= 1.2 cu. yd.  
 (0.92 m<sup>3</sup>) concrete.



SECTION B-B



SECTION C-C

INLET

GENERAL NOTES:

1. CONCRETE GUTTER, TYPE A, (SPECIAL) shall conform to the applicable portions of Section 606.
2. Tie bars shall be No. 6x24 (No. 19x600) at 36" (900mm) centers unless otherwise shown.
3. Gutter, gutter inlets, gutter outlets, and gutter entrances shall be tied to rigid pavement in accordance with details shown on Standard 420001.
4. Joints shall be constructed in accordance with Article 606.06.
5. Welded wire fabric shall conform to Article 1006.10(c)(1), and shall not be less than 58 lbs/100 sq.ft. (2.83 kg/m<sup>2</sup>).

QUANTITIES	
CALC. BY:	DATE:
CHECKED BY:	DATE:
QUANTITY CALCULATIONS ARE ON FILE AT THE DISTRICT 4 OFFICE; BUREAU OF PROJECT IMPLEMENTATION; DOCUMENTATION SECTION	

DATE	DESCRIPTION	BY
01-01-97	RENUM. A-1.02, NEW REVISION BOX, ELIMINATED	T.P.
11-16-07	EXPANSION ANCHOR TIES	M.A.
02-28-02	ENTRANCE TYPICALS REVISED	M.A.
10-16-06	REVISED TO 2007 SPEC.	M.A.
01-10-07	REVISED QUANTITY	M.A.
11-16-07	REVISED QUANTITY	M.A.
02-15-11	CHANGED MODIFIED TO SPECIAL	R.D.
01-31-18	REVISED TIE BAR SIZE & SPACING	R.D.

STATE OF ILLINOIS  
 DEPARTMENT OF TRANSPORTATION

CONCRETE GUTTER, TYPE A, (SPECIAL)  
 (INLET, OUTLET & ENTRANCE)

NOT TO SCALE

SHT. 1 OF 3  
 CADD STD. 606101-D4

All dimensions are in inches (millimeters) unless otherwise noted.

F.A.P. RTE.	SECTION	COUNTY	TOTAL SHEETS	SHEET NO.
22	48(B-1)BR(CR)	KNOX	94	66
CONTRACT NO. 68758				
FED. ROAD DIST. NO. ILLINOIS FED. AID PROJECT				