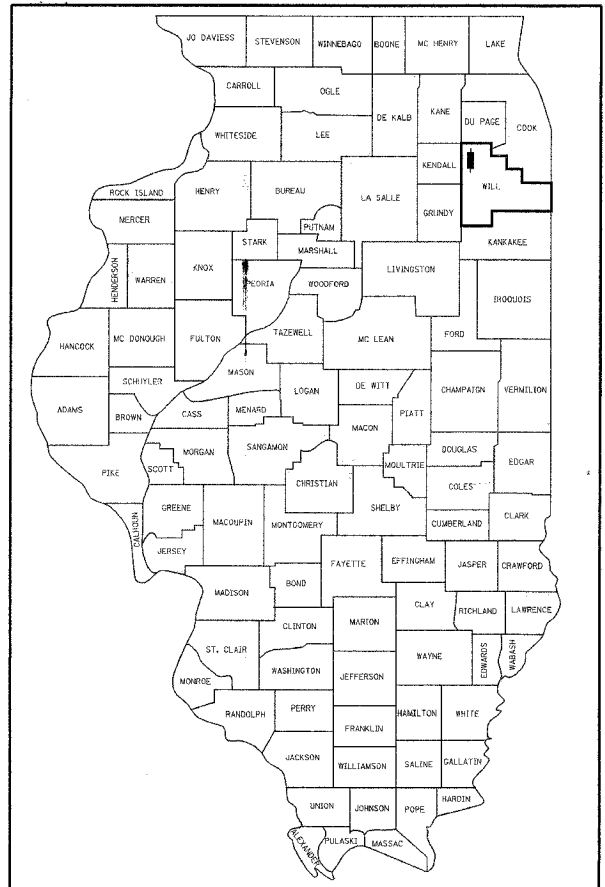


CONTRACT NO. 60D30	SECTION	COUNTY	TOTAL SHEETS	SHEET NO.
338	114 B-I	WILL.	15	1

D-91-124-02



LOCATION OF SECTION INDICATED THUS: - ■ -

STATE OF ILLINOIS
DEPARTMENT OF TRANSPORTATION
DIVISION OF HIGHWAYS
PROPOSED
HIGHWAY PLANS
(FAP 338) IL ROUTE 59
BRIDGE OVER THE DUPAGE RIVER
BEAM FABRICATION

SECTION 114 B-I
PROJECT NO: BRF-0338(031)
BRIDGE REPLACEMENT
WILL COUNTY
C-91-374-07

INDEX OF SHEETS

SEE SHEET NO. 2

TRAFFIC DATA

ADT (IL RTE 59) = 30,600 = SPEED LIMIT 45 MPH

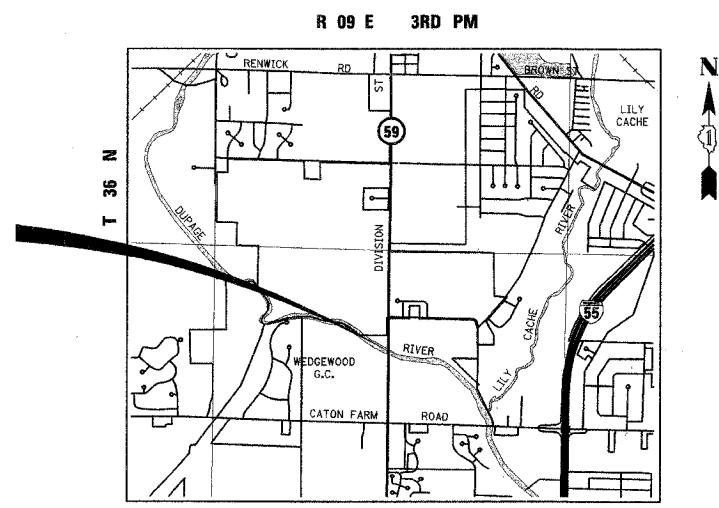
PROJECT LOCATION

CITY OF JOLIET
WILL COUNTY

DESIGN DESIGNATION

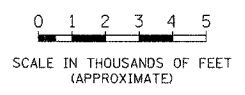
1.745 (24) OTHER PRINCIPAL ARTERIAL 11.85 (PCC-20)

BEAM FABRICATION
 FOR IL 59 STRUCTURE
 OVER THE DUPAGE RIVER
 @ STA. 3209 + 85
 SN 099-0143 (EXISTING)
 SN 099-0339 (PROPOSED)



PLAINFIELD TOWNSHIP

LOCATION MAP



J.U.L.I.E.
 JOINT UTILITY LOCATION INFORMATION FOR EXCAVATION
 1-800-892-0123

CONTRACT NO. 60D30

PROJECT COORDINATOR: MS. KIM HARVEY (847)-705-4055



SIGNED: *William P. Murphy*
 William P. Murphy, S.E. Il. Lic. No. 081-004491
 Expires 11/30/2008

DATE: 6/29/07

STATE OF ILLINOIS
 DEPARTMENT OF TRANSPORTATION
 DIVISION OF HIGHWAYS

SUBMITTED July 3, 2007
Diane O'Keefe/crl DISTRICT ENGINEER

August 17, 2007
Eric E. Haran
 Interim ENGINEER OF DESIGN AND ENVIRONMENT

August 17, 2007
Milton R. Sees, P.E.
 DIRECTOR, DIVISION OF HIGHWAYS

Plans Prepared By:
KNIGHT
 Engineers & Architects

221 North LaSalle Street
 Suite 300
 Chicago, IL 60601-1211
 Phone: (312) 577-3300

PRINTED BY THE AUTHORITY OF THE STATE OF ILLINOIS