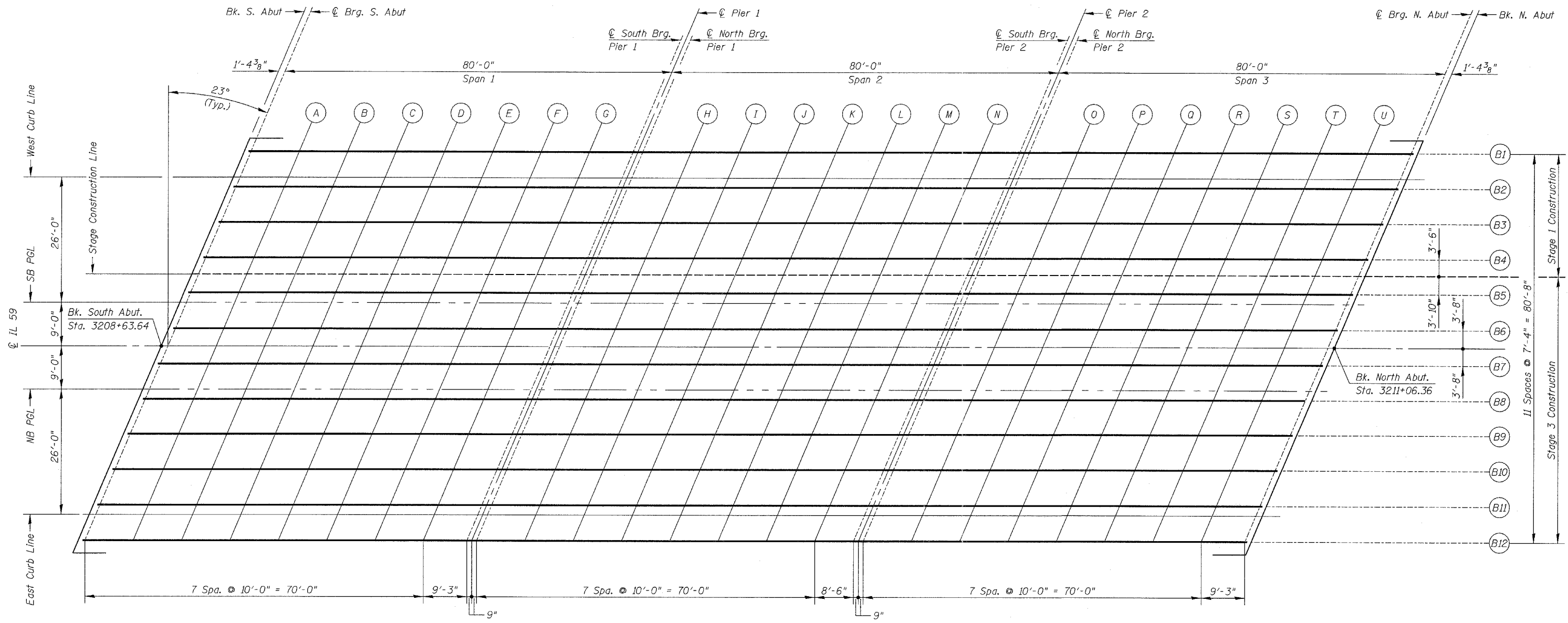
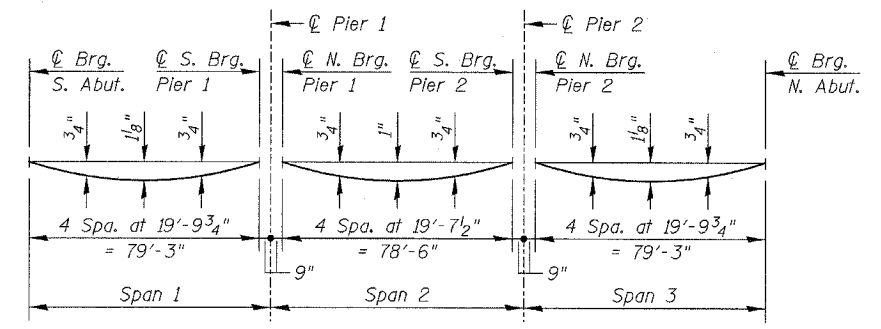


FAP NO.	SECTION	COUNTY	TOTAL SHEETS	SHEET NO.
338	114 B-I	WILL	15	5
STA.	TO STA.			
FED. ROAD DIST. NO.	ILLINOIS	FED. AID PROJECT		



PLAN



DEAD LOAD DEFLECTION DIAGRAM
(Includes weight of concrete, excluding beams)

Note:
The above deflections are not to be used in the field if the Engineer is working from the grade elevations adjusted for dead load deflections as shown in TABLES.

FOR INFORMATION ONLY

REVISIONS	
NAME	DATE

SHT. S-05 of 15
ILLINOIS DEPARTMENT OF TRANSPORTATION
TOP OF SLAB ELEVATIONS
ILLINOIS ROUTE 59 OVER DUPAGE RIVER
FAP ROUTE 338 SECTION 114 B-I
WILL COUNTY
STATION 3209+85.00
STRUCTURE NUMBER 099-0339
SCALE: NONE DESIGNED BY: SB DRAWN BY: TL
DATE: 06/29/07 CHECKED BY: WPM CHECKED BY: SB

FILE: L:\16632-02\Cad\Sheepsfords Roadway Structures\Bridges\663202-S0339-0201.dgn