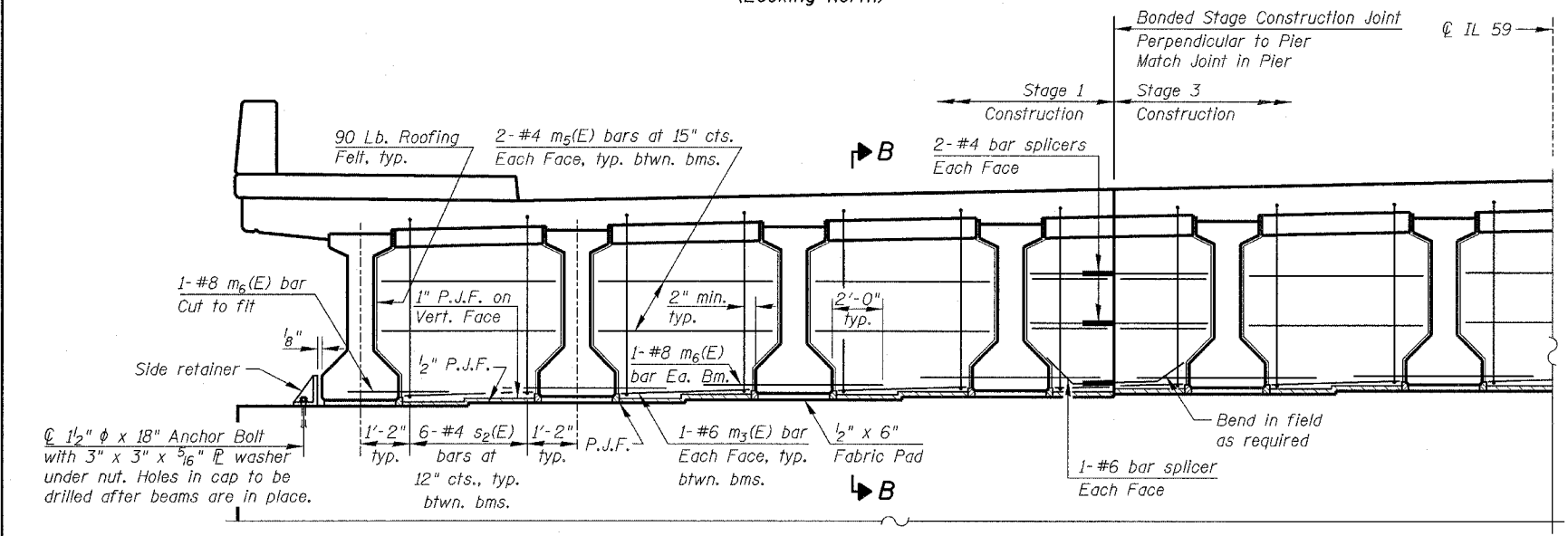
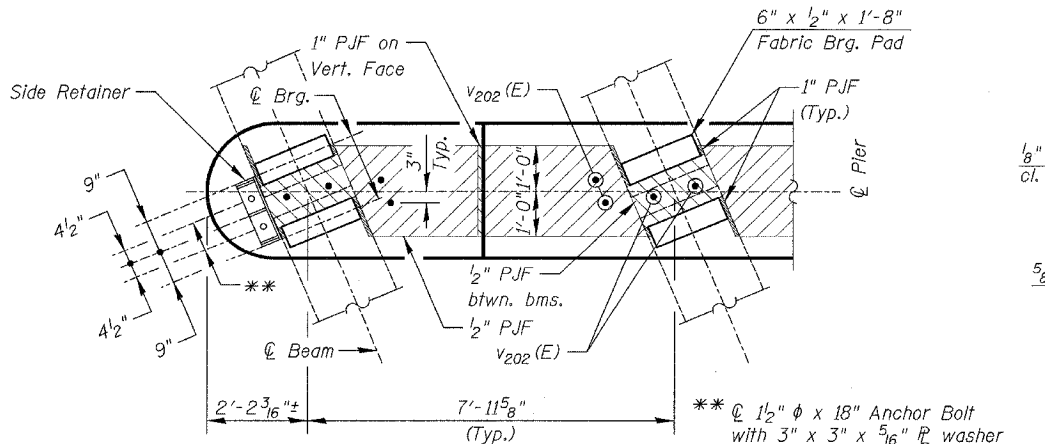


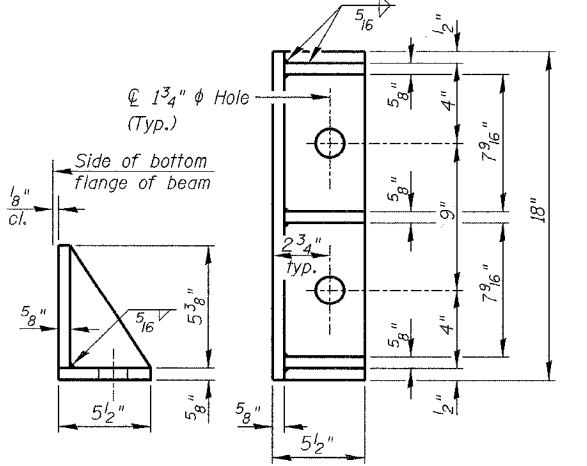
DIAPHRAGM ELEVATION AT ABUTMENT
(Looking North)



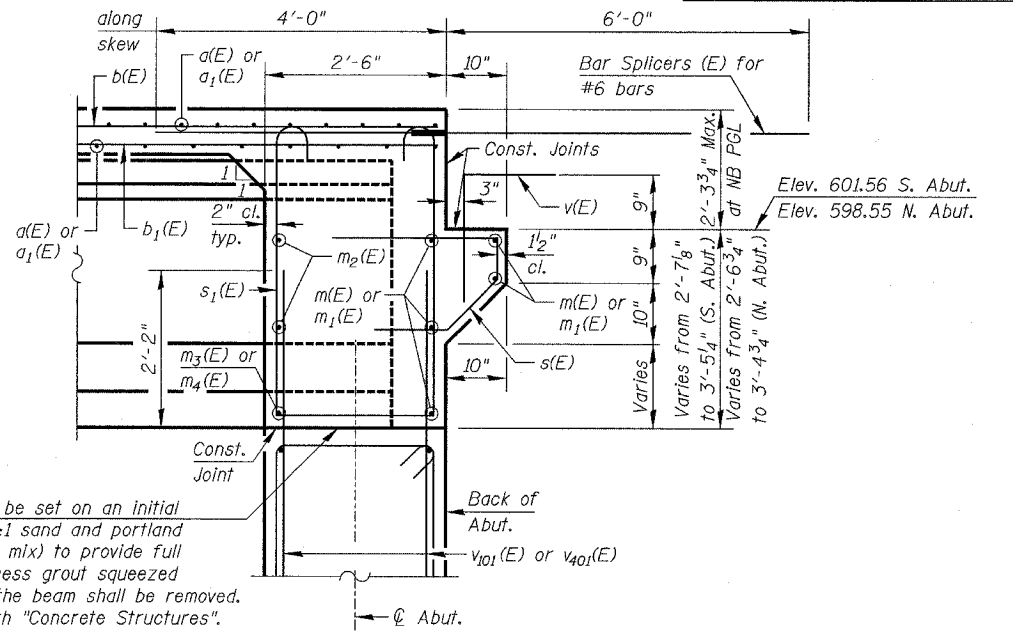
DIAPHRAGM ELEVATION AT PIER
(Looking North)



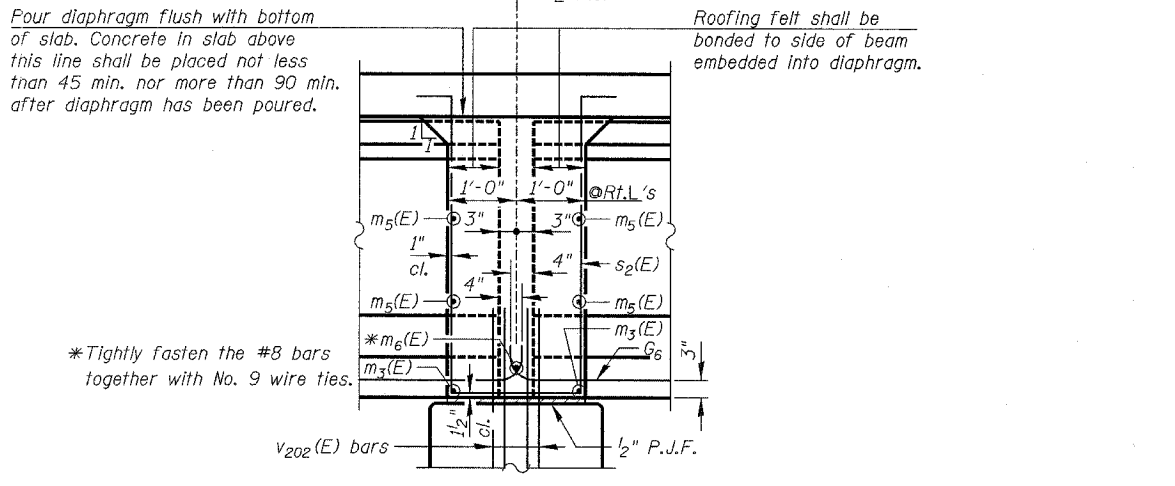
PLAN AT PIER
(Showing bearing pad and P.J.F. details)



SIDE RETAINER
(4 Required)
Equivalent rolled angle with stiffeners will be allowed in lieu of welded plates.



SECTION A-A
Dimensions at right angles to abutment, except as shown.



SECTION B-B
Dimensions along centerline of beam, except as shown.

Notes:
The s(E), s1(E) and s2(E) bars shall be placed parallel to the beams. Spacing for these bars shall be at right angles to the beams.
Cost of 90 lb. roofing felt is included with "Concrete Superstructure".
The side retainer shall be galvanized after shop fabrication according to AASHTO M 111 and ASTM A 385. Cost of side retainer and anchor bolts shall be included with "Concrete Structures".
Reinforcement Bars designated (E) shall be epoxy coated.
Cost of Fabric Bearing Pad included with "Concrete Superstructure".

MIN. BAR LAP
#6 bar = 2'-9"

FOR INFORMATION ONLY

REVISIONS		ILLINOIS DEPARTMENT OF TRANSPORTATION DECK DIAPHRAGM DETAILS ILLINOIS ROUTE 59 OVER DuPAGE RIVER FAP ROUTE 338 SECTION 114 B-1 WILL COUNTY STATION 3209+85.00 STRUCTURE NUMBER 099-0339
NAME	DATE	
		SCALE: NONE DATE: 06/29/07 DESIGNED BY: SB CHECKED BY: WPM DRAWN BY: TL CHECKED BY: SB

FILE: L:\16632-02\Cad\Sheets\Roadway Structures\Bridges\663202-50339-0A02.dgn