

F.A.U. RTE.	SECTION	COUNTY	TOTAL SHEETS	SHEET NO.
2845	3152 WRS	COOK	195	1

D-91-178-04

STATE OF ILLINOIS
DEPARTMENT OF TRANSPORTATION
DIVISION OF HIGHWAYS

PROPOSED HIGHWAY PLANS

FAU 2845: WESTERN AVENUE
ILLINOIS ST (16TH ST) TO STEGER ROAD
SECTION: 3152 WRS
WIDENING & RESURFACING
PROJECT: M-CMM-HPD-2845(005)
COOK COUNTY
C-91-178-04

FOR INDEX OF SHEETS, SEE SHEET NO. 2

THE PROJECT IS LOCATED
IN THE VILLAGE OF PARK FOREST &
THE CITY OF CHICAGO HEIGHTS



LOCATION OF SECTION INDICATED THUS: -

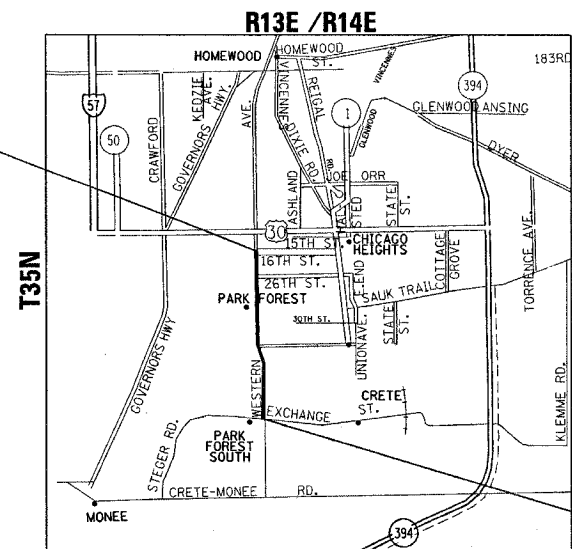


TRAFFIC DATA
SPEED LIMIT = 35-40 MPH
2002 ADT = 20,100

PROJECT BEGINS
STATION 119 + 41

STA. EQUATION
STA. 228 + 08.78 BK
STA. 9 + 97.52 AH

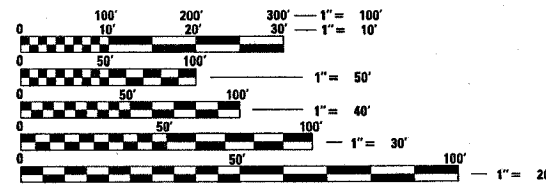
OMISSION FROM:
STA. 220 + 85 TO STA. 221 + 20
STA. 86 + 15.7 TO STA. 86 + 45.9



PROJECT ENDS
STATION 219 + 10

BLOOM & RICH TOWNSHIPS

GROSS LENGTH OF PROJECT = 11842.26 LF = 2.24 MILE
NET LENGTH OF PROJECT = 11777.06 LF = 2.23 MILE



FULL SIZE PLANS HAVE BEEN PREPARED USING STANDARD
ENGINEERING SCALES. REDUCED SIZED PLANS WILL NOT
CONFORM TO STANDARD SCALES. IN MAKING MEASUREMENTS
ON REDUCED PLANS, THE ABOVE SCALES MAY BE USED.

J.U.L.I.E.
JOINT UTILITY LOCATION INFORMATION FOR EXCAVATION
1-800-892-0123

STATE OF ILLINOIS
DEPARTMENT OF TRANSPORTATION
DIVISION OF HIGHWAYS

SUBMITTED 6-27 20 07

[Signature]
DEPUTY DIRECTOR OF HIGHWAYS, REGION ENGINEER

August 17, 20 07
[Signature]
ENGINEER OF DESIGN AND ENVIRONMENT

August 17, 20 07
[Signature]
DIRECTOR OF HIGHWAYS, CHIEF ENGINEER

PRINTED BY THE AUTHORITY
OF THE STATE OF ILLINOIS

DISTRICT ONE - DESIGN - PLAN PREPARATION
KEN ENG / ROBERT BORO (847) 705-4178