

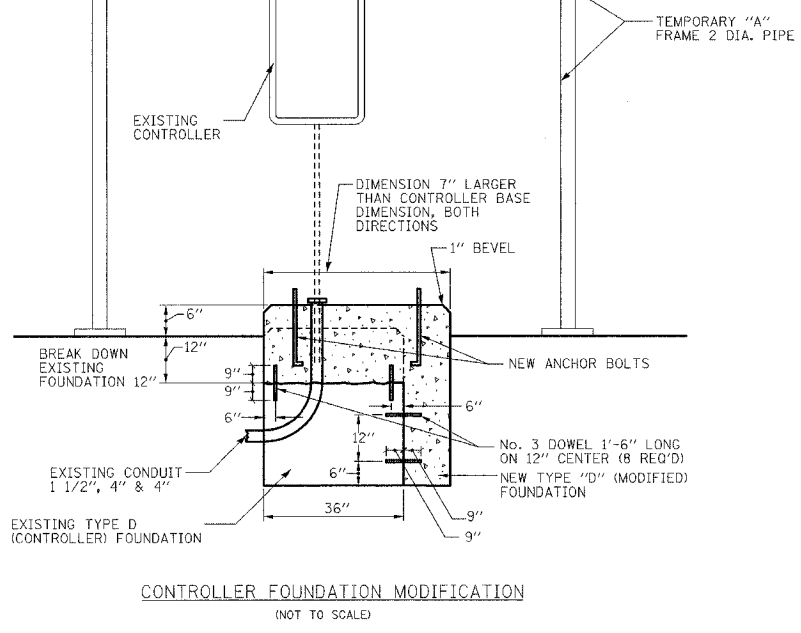
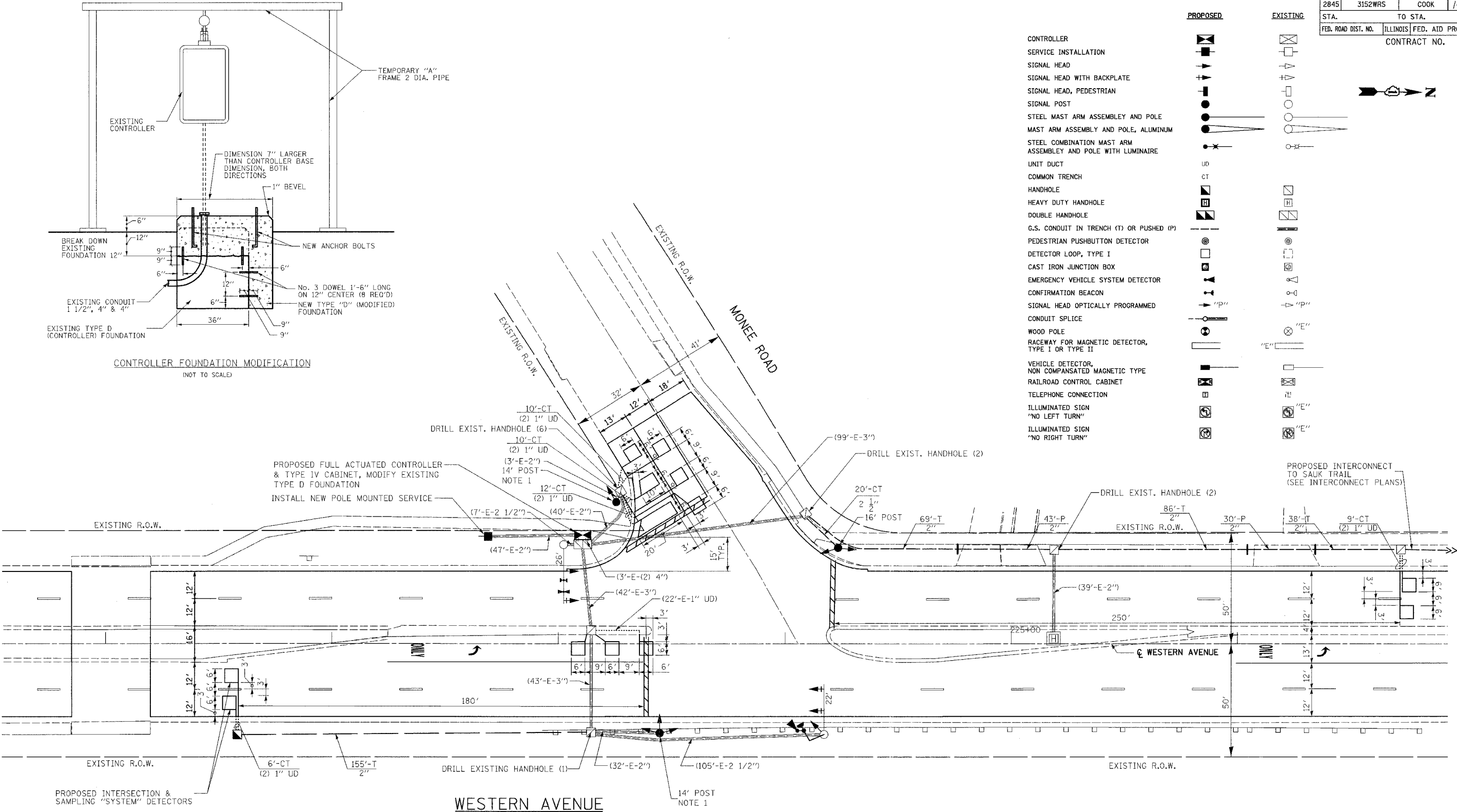
PREPARED BY
CEMCON, Ltd.
Consulting Engineers, Land Surveyors & Planners
2800 Wilshire Blvd. Circle 100, Suite 100
Beverly Hills, CA 90210
Ph: 650.862.2100 Fax: 650.862.2199
E-Mail: ced@cemcon.com Website: www.cemcon.com

TRAFFIC SIGNAL LEGEND

CONTROLLER
SERVICE INSTALLATION
SIGNAL HEAD
SIGNAL HEAD WITH BACKPLATE
SIGNAL HEAD, PEDESTRIAN
SIGNAL POST
STEEL MAST ARM ASSEMBLY AND POLE
MAST ARM ASSEMBLY AND POLE, ALUMINUM
STEEL COMBINATION MAST ARM ASSEMBLY AND POLE WITH LUMINAIRE
UNIT DUCT
COMMON TRENCH
HANDHOLE
HEAVY DUTY HANDHOLE
DOUBLE HANDHOLE
G.S. CONDUIT IN TRENCH (T) OR PUSHED (P)
PEDESTRIAN PUSHBUTTON DETECTOR
DETECTOR LOOP, TYPE I
CAST IRON JUNCTION BOX
EMERGENCY VEHICLE SYSTEM DETECTOR
CONFIRMATION BEACON
SIGNAL HEAD OPTICALLY PROGRAMMED
CONDUIT SPLICE
WOOD POLE
RACEWAY FOR MAGNETIC DETECTOR, TYPE I OR TYPE II
VEHICLE DETECTOR, NON COMPENSATED MAGNETIC TYPE
RAILROAD CONTROL CABINET
TELEPHONE CONNECTION
ILLUMINATED SIGN "NO LEFT TURN"
ILLUMINATED SIGN "NO RIGHT TURN"

F.A.U. RTE.	SECTION	COUNTY	TOTAL SHEETS	SHEET NO.
2845	3152WRS	COOK	195	88

STA. TO STA. ILLINOIS FED. AID PROJECT CONTRACT NO. 62742



NOTES:

- DO NOT RE-INSTALL TRAFFIC SIGNAL POSTS. INSTALL NEW TRAFFIC SIGNAL POSTS & HEADS ON NEW OR EXISTING FOUNDATIONS AT ALL LOCATIONS. SEE PLAN FOR POST SIZE.
- THE TRAFFIC SIGNAL CONTROL EQUIPMENT FOR THIS PROJECT SHALL BE "ECONOLITE".
- ALL TRAFFIC SIGNAL HEADS SHALL BE L.E.D. (LIGHT EMITTING DIODE)

RESTORATION OF WORK AREA

RESTORATION OF TRAFFIC SIGNAL WORK AREA SHALL BE INCIDENTAL TO THE RELATED PAY ITEM SUCH AS FOUNDATION, CONDUIT, HANDHOLE, TRENCH AND BACKFILL, ETC., AND NO EXTRA COMPENSATION SHALL BE ALLOWED. ALL ROADWAY SURFACES SUCH AS SHOULDERS, MEDIANS, SIDEWALKS, PAVEMENT, ETC. SHALL BE REPLACED IN KIND. ALL DAMAGE TO MOWED LAWNS SHALL BE REPLACED WITH AN APPROVED SOD, AND ALL DAMAGE TO UNMOWED FIELDS SHALL BE SEED IN ACCORDANCE WITH STANDARD SPECIFICATIONS 252 AND 250 RESPECTIVELY.

FOR UNDERGROUND UTILITY LOCATIONS, CALL J.U.L.I.E. TOLL FREE TEL. 1-800-892-0123

REVISIONS	
NAME	DATE

ILLINOIS DEPARTMENT OF TRANSPORTATION
TRAFFIC SIGNAL MODERNIZATION WESTERN AVENUE AT MONEE ROAD
SCALE: VERT. 1" = 20'
HORIZ. 1" = 100'
DATE 5/17/2007
DRAWN BY JLA
DESIGNED BY KK/BPT
CHECKED BY JTL/BPT

PLOT DATE = 5/18/2007
FILE NAME = J:\narc\cadd\3522064\ddgn\veh\22.S.Monee.dgn
PLOT SCALE = 1"=20'
USER NAME = JLA