

PREPARED BY:
CEMCON, Ltd.
 Consulting Engineers, Land Surveyors & Planners
 2800 White Oak Circle, Suite 100
 Naperville, IL 60563
 Phone: 630.682.2100 Fax: 630.682.2199
 E-Mail: info@cemcon.com Website: www.cemcon.com



NOTES FOR TEMPORARY TRAFFIC SIGNALS

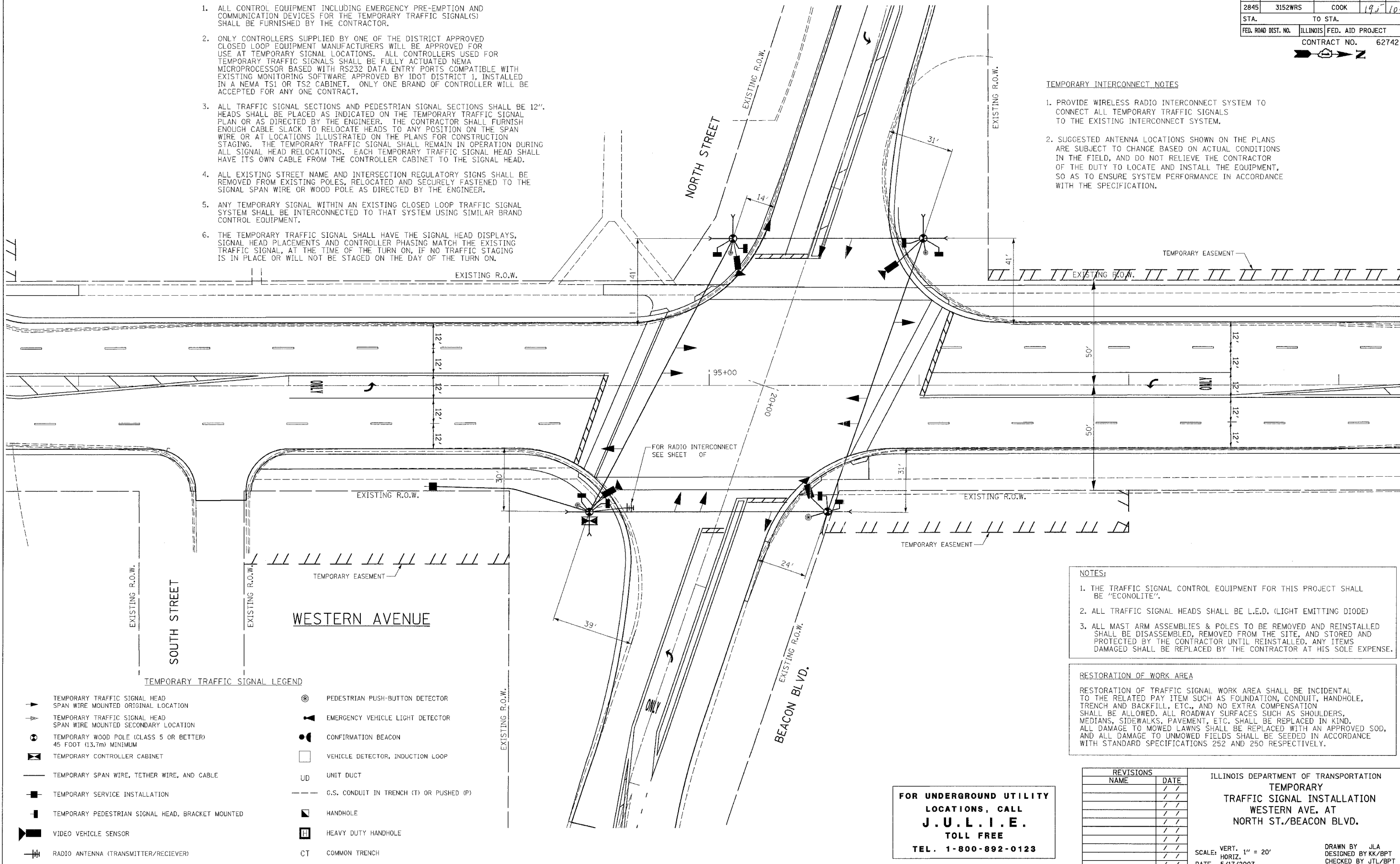
1. ALL CONTROL EQUIPMENT INCLUDING EMERGENCY PRE-EMPTION AND COMMUNICATION DEVICES FOR THE TEMPORARY TRAFFIC SIGNAL(S) SHALL BE FURNISHED BY THE CONTRACTOR.
2. ONLY CONTROLLERS SUPPLIED BY ONE OF THE DISTRICT APPROVED CLOSED LOOP EQUIPMENT MANUFACTURERS WILL BE APPROVED FOR USE AT TEMPORARY SIGNAL LOCATIONS. ALL CONTROLLERS USED FOR TEMPORARY TRAFFIC SIGNALS SHALL BE FULLY ACTUATED NEMA MICROPROCESSOR BASED WITH RS232 DATA ENTRY PORTS COMPATIBLE WITH EXISTING MONITORING SOFTWARE APPROVED BY IDOT DISTRICT 1, INSTALLED IN A NEMA TS1 OR TS2 CABINET. ONLY ONE BRAND OF CONTROLLER WILL BE ACCEPTED FOR ANY ONE CONTRACT.
3. ALL TRAFFIC SIGNAL SECTIONS AND PEDESTRIAN SIGNAL SECTIONS SHALL BE 12". HEADS SHALL BE PLACED AS INDICATED ON THE TEMPORARY TRAFFIC SIGNAL PLAN OR AS DIRECTED BY THE ENGINEER. THE CONTRACTOR SHALL FURNISH ENOUGH CABLE SLACK TO RELOCATE HEADS TO ANY POSITION ON THE SPAN WIRE OR AT LOCATIONS ILLUSTRATED ON THE PLANS FOR CONSTRUCTION STAGING. THE TEMPORARY TRAFFIC SIGNAL SHALL REMAIN IN OPERATION DURING ALL SIGNAL HEAD RELOCATIONS. EACH TEMPORARY TRAFFIC SIGNAL HEAD SHALL HAVE ITS OWN CABLE FROM THE CONTROLLER CABINET TO THE SIGNAL HEAD.
4. ALL EXISTING STREET NAME AND INTERSECTION REGULATORY SIGNS SHALL BE REMOVED FROM EXISTING POLES, RELOCATED AND SECURELY FASTENED TO THE SIGNAL SPAN WIRE OR WOOD POLE AS DIRECTED BY THE ENGINEER.
5. ANY TEMPORARY SIGNAL WITHIN AN EXISTING CLOSED LOOP TRAFFIC SIGNAL SYSTEM SHALL BE INTERCONNECTED TO THAT SYSTEM USING SIMILAR BRAND CONTROL EQUIPMENT.
6. THE TEMPORARY TRAFFIC SIGNAL SHALL HAVE THE SIGNAL HEAD DISPLAYS, SIGNAL HEAD PLACEMENTS AND CONTROLLER PHASING MATCH THE EXISTING TRAFFIC SIGNAL, AT THE TIME OF THE TURN ON, IF NO TRAFFIC STAGING IS IN PLACE OR WILL NOT BE STAGED ON THE DAY OF THE TURN ON.

F.A.U. RTE.	SECTION	COUNTY	TOTAL SHEETS	SHEET NO.
2845	3152WRS	COOK	19	104
STA.	TO STA.			
FED. ROAD DIST. NO.	ILLINOIS	FED. AID PROJECT		
		CONTRACT NO.	62742	



TEMPORARY INTERCONNECT NOTES

1. PROVIDE WIRELESS RADIO INTERCONNECT SYSTEM TO CONNECT ALL TEMPORARY TRAFFIC SIGNALS TO THE EXISTING INTERCONNECT SYSTEM.
2. SUGGESTED ANTENNA LOCATIONS SHOWN ON THE PLANS ARE SUBJECT TO CHANGE BASED ON ACTUAL CONDITIONS IN THE FIELD, AND DO NOT RELIEVE THE CONTRACTOR OF THE DUTY TO LOCATE AND INSTALL THE EQUIPMENT, SO AS TO ENSURE SYSTEM PERFORMANCE IN ACCORDANCE WITH THE SPECIFICATION.



- NOTES:**
1. THE TRAFFIC SIGNAL CONTROL EQUIPMENT FOR THIS PROJECT SHALL BE "ECONOLITE".
 2. ALL TRAFFIC SIGNAL HEADS SHALL BE L.E.D. (LIGHT EMITTING DIODE)
 3. ALL MAST ARM ASSEMBLIES & POLES TO BE REMOVED AND REINSTALLED SHALL BE DISASSEMBLED, REMOVED FROM THE SITE, AND STORED AND PROTECTED BY THE CONTRACTOR UNTIL REINSTALLED. ANY ITEMS DAMAGED SHALL BE REPLACED BY THE CONTRACTOR AT HIS SOLE EXPENSE.

RESTORATION OF WORK AREA

RESTORATION OF TRAFFIC SIGNAL WORK AREA SHALL BE INCIDENTAL TO THE RELATED PAY ITEM SUCH AS FOUNDATION, CONDUIT, HANDHOLE, TRENCH AND BACKFILL, ETC., AND NO EXTRA COMPENSATION SHALL BE ALLOWED. ALL ROADWAY SURFACES SUCH AS SHOULDERS, MEDIANS, SIDEWALKS, PAVEMENT, ETC. SHALL BE REPLACED IN KIND. ALL DAMAGE TO MOWED LAWNS SHALL BE REPLACED WITH AN APPROVED SOD, AND ALL DAMAGE TO UNMOWED FIELDS SHALL BE SEEDING IN ACCORDANCE WITH STANDARD SPECIFICATIONS 252 AND 250 RESPECTIVELY.

TEMPORARY TRAFFIC SIGNAL LEGEND

	TEMPORARY TRAFFIC SIGNAL HEAD SPAN WIRE MOUNTED ORIGINAL LOCATION		PEDESTRIAN PUSH-BUTTON DETECTOR
	TEMPORARY TRAFFIC SIGNAL HEAD SPAN WIRE MOUNTED SECONDARY LOCATION		EMERGENCY VEHICLE LIGHT DETECTOR
	TEMPORARY WOOD POLE (CLASS 5 OR BETTER) 45 FOOT (13.7m) MINIMUM		CONFIRMATION BEACON
	TEMPORARY CONTROLLER CABINET		VEHICLE DETECTOR, INDUCTION LOOP
	TEMPORARY SPAN WIRE, TETHER WIRE, AND CABLE		UNIT DUCT
	TEMPORARY SERVICE INSTALLATION		G.S. CONDUIT IN TRENCH (T) OR PUSHED (P)
	TEMPORARY PEDESTRIAN SIGNAL HEAD, BRACKET MOUNTED		HANDHOLE
	VIDEO VEHICLE SENSOR		HEAVY DUTY HANDHOLE
	RADIO ANTENNA (TRANSMITTER/RECIEVER)		COMMON TRENCH

FOR UNDERGROUND UTILITY LOCATIONS, CALL J.U.L.I.E. TOLL FREE TEL. 1-800-892-0123

REVISIONS	
NAME	DATE

ILLINOIS DEPARTMENT OF TRANSPORTATION
TEMPORARY TRAFFIC SIGNAL INSTALLATION
 WESTERN AVE. AT NORTH ST./BEACON BLVD.

SCALE: VERT. 1" = 20'
 HORIZ. 1" = 20'
 DATE 5/17/2007

DRAWN BY JLA
 DESIGNED BY KK/BPT
 CHECKED BY JTL/BPT

PLOT DATE = 5/18/2007
 FILE NAME = I:\Projects\3022005\Sign\North St. Western Ave.dgn
 PLOT SCALE = 1"=20'
 USER NAME = JLA