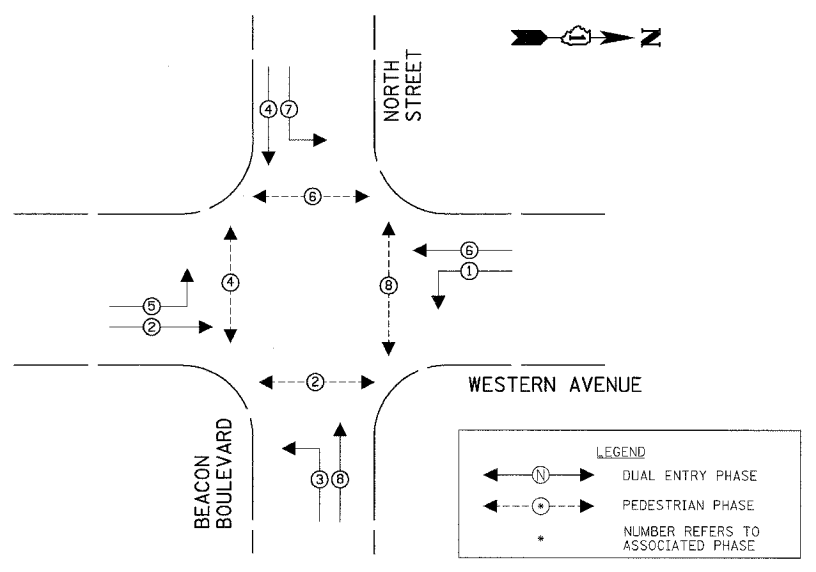


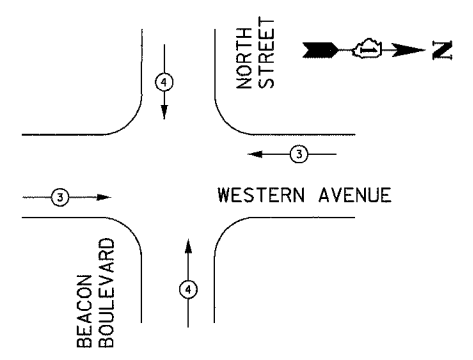
PREPARED BY:
CEMCON, Ltd.
 Consulting Engineers, Land Surveyors & Planners
 2880 White Oak Circle, Suite 100
 Naperville, IL 60563
 Tel: 630.882.2100 Fax: 630.882.2199
 E-Mail: cadd@cemcon.com Website: www.cemcon.com

F.A.U. RTE.	SECTION	COUNTY	TOTAL SHEETS	SHEET NO.
2845	3152WRS	COOK	195	105
STA.	TO STA.			
FED. ROAD DIST. NO.	ILLINOIS	FED. AID PROJECT	CONTRACT NO. 62742	

CONTROLLER SEQUENCE



PHASE DESIGNATION DIAGRAM

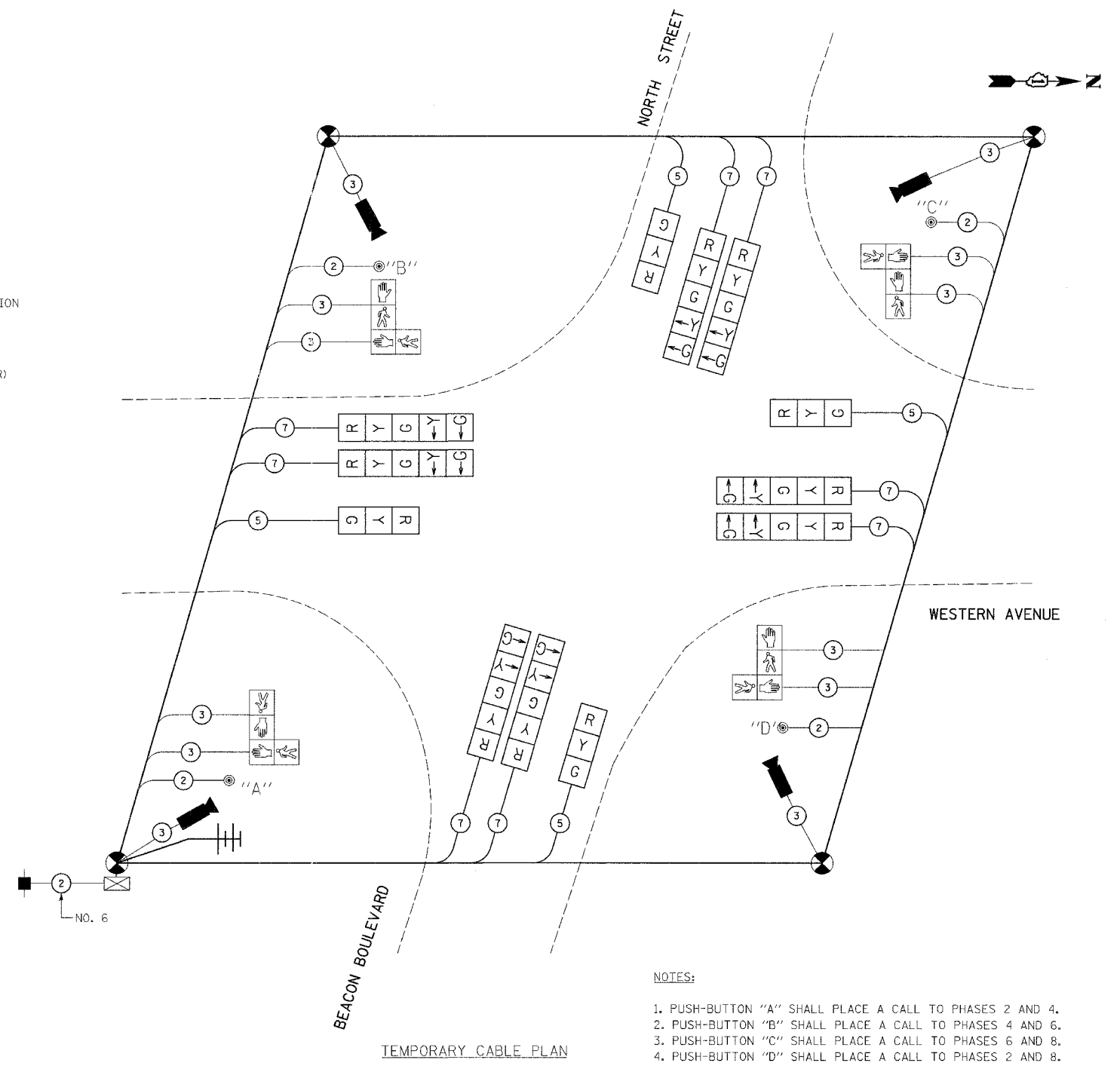


EMERGENCY VEHICLE PREEMPTOR	3	4
MOVEMENT	⇐	⇐⇐

EMERGENCY VEHICLE PREEMPTION SEQUENCE

TEMPORARY CABLE DIAGRAM LEGEND

-
-
-
- INDICATES NUMBER OF CONDUCTORS IN CABLE. ALL CONDUCTORS TO BE NUMBER 14 AWG WIRE UNLESS OTHERWISE NOTED.
-
-
-
-
-
-
-
-



TEMPORARY CABLE PLAN

NOTES:

- PUSH-BUTTON "A" SHALL PLACE A CALL TO PHASES 2 AND 4.
- PUSH-BUTTON "B" SHALL PLACE A CALL TO PHASES 4 AND 6.
- PUSH-BUTTON "C" SHALL PLACE A CALL TO PHASES 6 AND 8.
- PUSH-BUTTON "D" SHALL PLACE A CALL TO PHASES 2 AND 8.

NOTES:

- CABLES FOR VIDEO DETECTORS AND RADIO ANTENNAS SHALL BE IN ACCORDANCE WITH THE REQUIREMENTS OF THE MANUFACTURERS OF THE EQUIPMENT.
- THE TRAFFIC SIGNAL CONTROL EQUIPMENT FOR THIS PROJECT SHALL BE "ECONOLITE".

NAME	DATE

ILLINOIS DEPARTMENT OF TRANSPORTATION
TEMPORARY CABLE PLAN AND PHASE DESIGNATION DIAGRAM
 WESTERN AVE. AT NORTH ST./BEACON BLVD.
 SCALE: VERT. NONE
 HORIZ. DATE 5/17/2007
 DRAWN BY JLA
 DESIGNED BY KK/BPT
 CHECKED BY JTL/BPT

TYPE	NO. LAMPS	WATTAGE INCAND.	WATTAGE LED	%OPERATION	TOTAL WATTAGE
SIGNAL (RED)	12	135	17	0.50	102
(YELLOW)	12	135	25	0.25	75
(GREEN)	12	135	15	0.25	45
ARROW	16	135	12	0.10	19.2
PED. SIGNAL	8	90	25	1.00	200
CONTROLLER	1	100	100	1.00	100
ILLUM. SIGN		84		0.05	
FLASHER				0.50	
ENERGY COSTS TO:					
25% TO IDOT					
37.5% TO VILLAGE OF PARK FOREST					
37.5% TO CITY OF CHICAGO HEIGHTS					
ENERGY SUPPLY CONTACT: <u>Jim Werner</u>					
PHONE: <u>(708) 235-2694</u>					
COMPANY: <u>Commonwealth Edison</u>					

FOUNDATION (DEPTH)	FT. (m)	CABLE SLACK	FT. (m)	VERTICAL	FT. (m)
TYPE A - POST	4 (1.2)	HANDHOLE	6.5 (2.0)	ALL FOUNDATIONS	3.0 (1.0)
D - CONTROLLER	4 (1.2)	DOUBLE HANDHOLE	13 (4.0)	MAST ARM (L) POLE	20.0 (6.0)
E - M. ARM POLE		SIGNAL POST	0 (0.0)	BRACKET MOUNTED	13 (4.0)
24" (600mm)	10 (3.0)	CONTROLLER CAB.	0 (0.0)	PED. PUSH-BUTTON	6 (2.0)
30" (750mm)	15 (4.6)	FIBER OPTIC	13 (4.0)	ELECTRIC SERVICE	13.5 (4.1)
		ELECTRIC SERVICE	1 (0.5)	SERVICE TO GROUND	13.5 (4.1)
		GROUND CABLE	1 (0.5)	POST MOUNTED	13 (4.0)

PLOT DATE = 5/19/2007
 PLOT SCALE = 1"=20'
 USER NAME = JLA