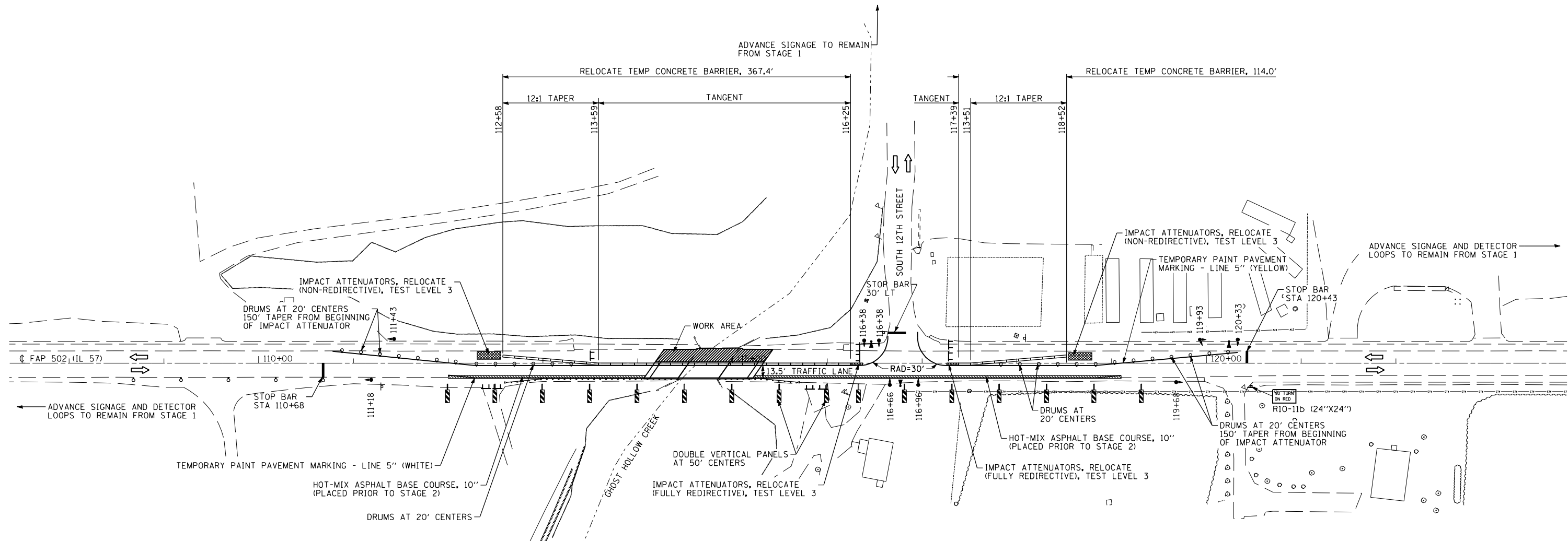


F.A.P. RTE.	SECTION	COUNTY	TOTAL SHEETS	SHEET NO.
502	54BR-1	ADAMS	28	10
STA.		TO STA.		
FED. ROAD DIST. NO.	ILLINOIS	FED. AID PROJECT		

STAGE 2 PLAN - STD 701321 (SPECIAL)

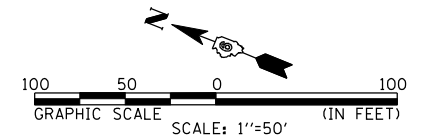


LEGEND

- ← DIRECTION OF TRAFFIC
- ⊥ TYPE III BARRICADE
- ▬ TEMPORARY CONCRETE BARRIER
- ▬ DOUBLE VERTICAL PANEL
- DRUM WITH BI-DIRECTIONAL STEADY BURNING LIGHT
- ⊣ MICROWAVE DETECTOR SYSTEM
- ⊣ TEMPORARY TRAFFIC SIGNAL
- ▨ TEMPORARY IMPACT ATTENUATOR
- ▨ WORK ZONE
- ▨ HOT-MIX ASPHALT BASE COURSE (WIDENING)

TRAFFIC CONTROL & PROTECTION QUANTITIES

ITEM	UNIT	QUANTITY	STAGE
TRAFFIC CONTROL AND PROTECTION, STANDARD 701306	L SUM	1	STAGE 3
TRAFFIC CONTROL AND PROTECTION, STANDARD 701326	L SUM	1	PRIOR TO STAGE 1
TRAFFIC CONTROL AND PROTECTION, STANDARD 701321 (SPECIAL)	EACH	1	STAGE 1 & 2
TRAFFIC CONTROL SURVEILLANCE	CAL DA	7	PRIOR TO STAGE 1
TEMPORARY BRIDGE TRAFFIC SIGNALS	EACH	10	STAGE 1 & 2
TEMPORARY PAINT PAVEMENT MARKING LINE 5"	FOOT	3342	STAGE 1 & 2
TEMPORARY PAINT PAVEMENT MARKING LINE 24"	FOOT	45	STAGE 1 & 2
TEMPORARY CONCRETE BARRIER	FOOT	481	STAGE 1
RELOCATE TEMPORARY CONCRETE BARRIER	FOOT	481	STAGE 2
IMPACT ATTENUATORS, TEMPORARY (NON- REDIRECTIVE), TEST LEVEL 3	EACH	2	STAGE 1
IMPACT ATTENUATORS, TEMPORARY (FULLY REDIRECTIVE, NARROW), TEST LEVEL 3	EACH	2	STAGE 1
IMPACT ATTENUATORS, RELOCATE (FULLY REDIRECTIVE), TEST LEVEL 3	EACH	2	STAGE 2
IMPACT ATTENUATORS, RELOCATE (NON- REDIRECTIVE), TEST LEVEL 3	EACH	2	STAGE 2
WIDTH RESTRICTION SIGNING	L SUM	1	STAGE 1 & 2



REVISIONS		ILLINOIS DEPARTMENT OF TRANSPORTATION	
NAME	DATE	TRAFFIC CONTROL & PROTECTION	
		FAP 502 (IL 57)	
		SECTION 54BR-1	
		ADAMS COUNTY	
		SCALE: VERT. 1"=50'	DRAWN BY SEB
		HORIZ. 1"=50'	CHECKED BY EBB
		DATE 6/28/2007	

PLOT DATE = 7/2/2007  
 PLOT SCALE = 1/8"=1'-0"  
 PLOT SCALE = 1/8"=1'-0"  
 PLOT SCALE = 1/8"=1'-0"