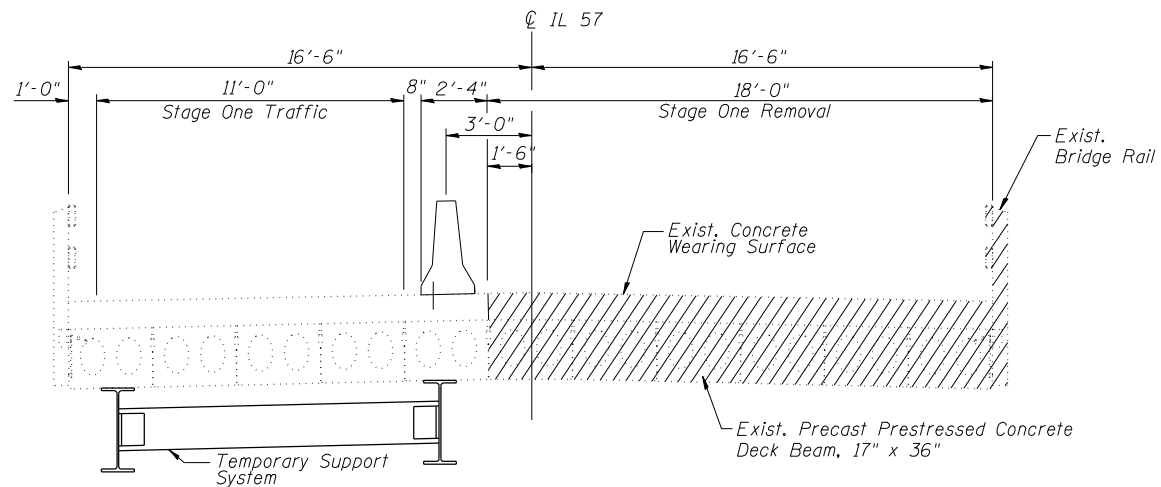


STATE OF ILLINOIS  
DEPARTMENT OF TRANSPORTATION

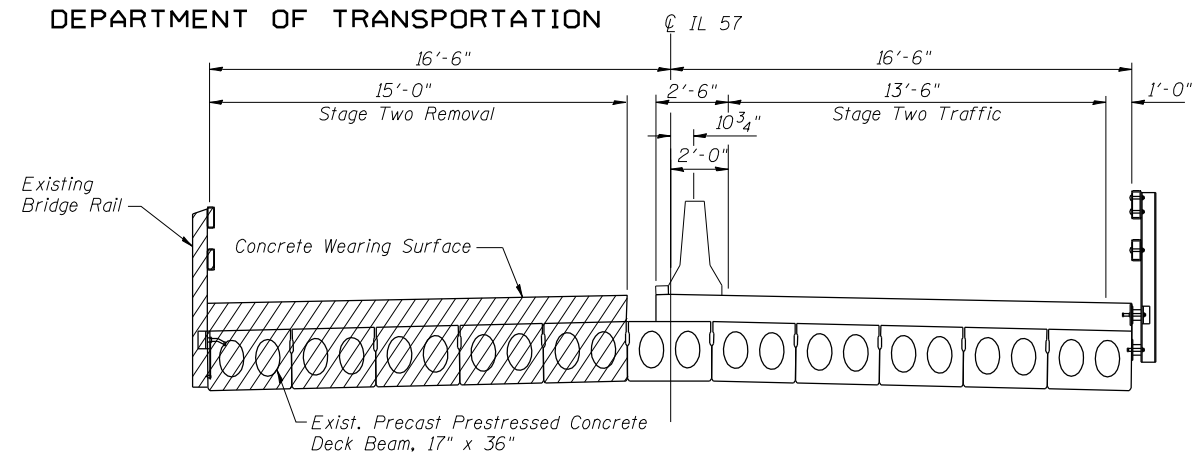
ROUTE NO.	SECTION	COUNTY	TOTAL SHEETS	SHEET NO.
F.A.P. 502	54BR-1	ADAMS	28	17
FED. ROAD DIST. NO. 7		ILLINOIS	FED. AID PROJECT	

SHEET NO. 3  
9 SHEETS

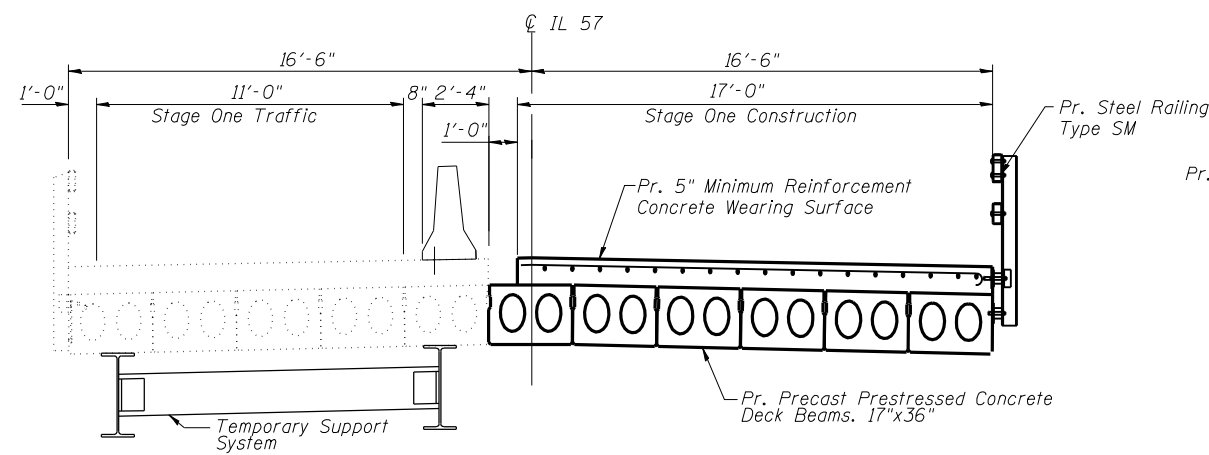
Contract #72873



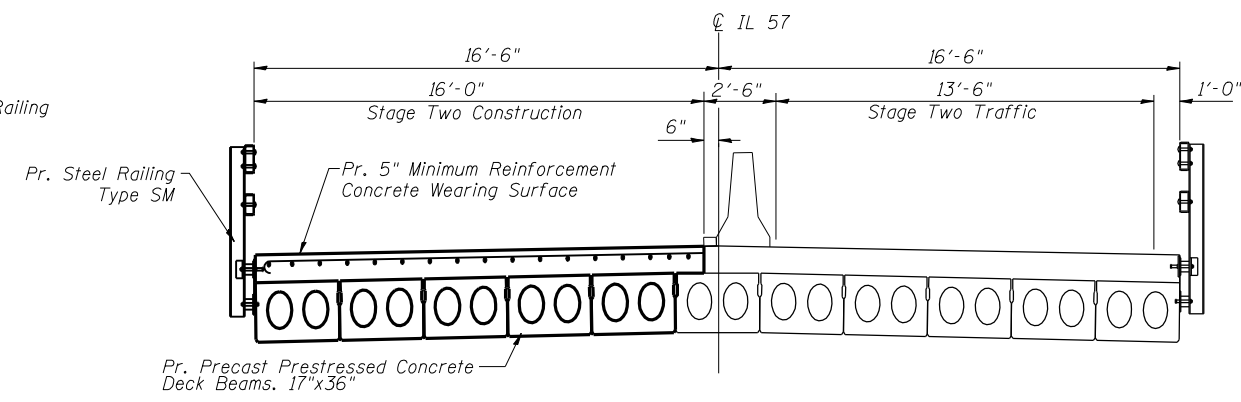
**CROSS SECTION - STAGE 1 REMOVAL**  
(Looking South)



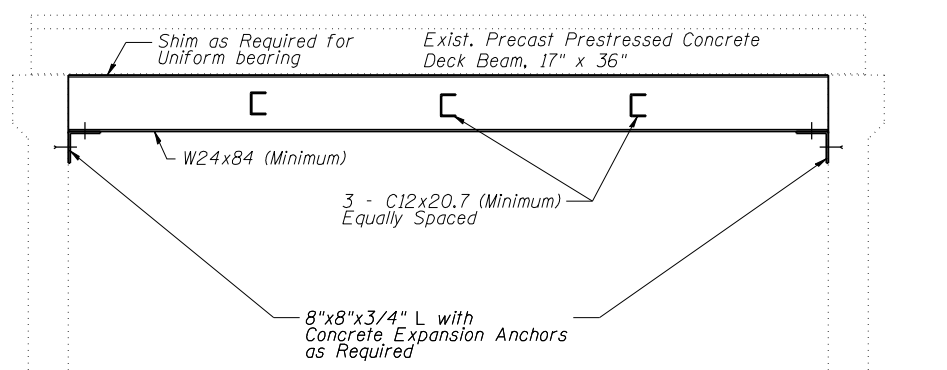
**CROSS SECTION - STAGE 2 REMOVAL**  
(Looking South)



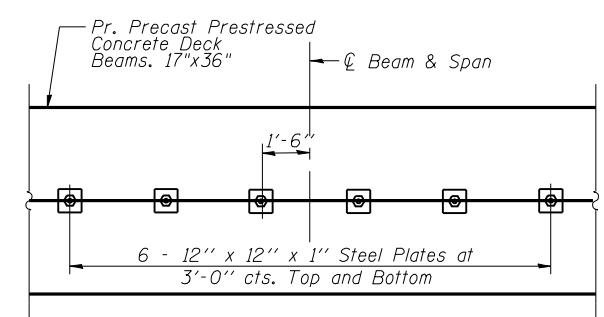
**CROSS SECTION - STAGE 1 CONSTRUCTION**  
(Looking South)



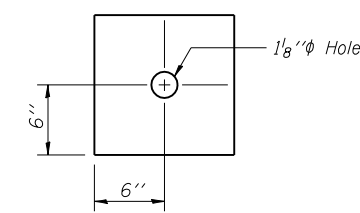
**CROSS SECTION - STAGE 2 CONSTRUCTION**  
(Looking South)



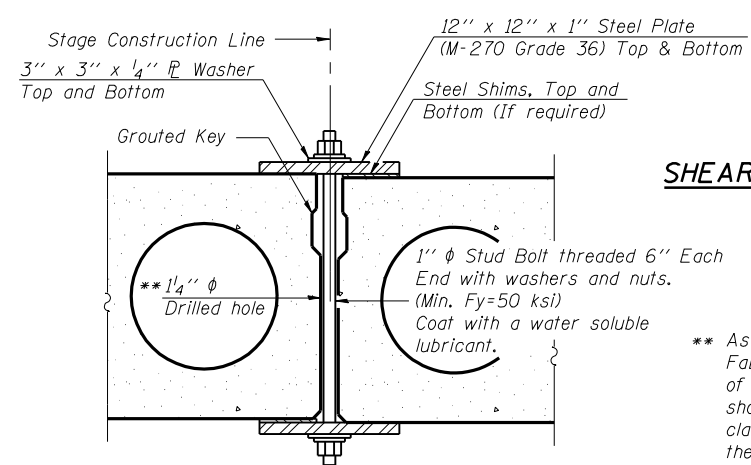
**TEMPORARY SUPPORT SYSTEM**



**PLAN**



**CLAMPING PLATE**



**SECTION**

**SHEAR KEY CLAMPING DETAILS AT STAGE CONST. JT.**

Cost included with Precast Prestressed Concrete Deck Beams.  
See Stage Construction Details for traffic lanes.  
Clamping device to be removed after all shear keys are grouted.

\*\* As an alternate to the drilled holes, the Contractor may request the Fabricator to cast 2" diameter semi-circular recesses in the sides of each beam adjacent to the stage construction line. These recesses should align to form a hole at the appropriate locations for the clamping device bolts. If the Contractor elects to use this alternate, the details shall be identified on the shop drawings.

**NOTES:**

Hatch areas indicate "Removal of Existing Superstructure".  
Removal of existing steel railing, concrete wearing surface, and deck beams, are included with "Removal of Existing Superstructure".  
See roadway plans for quantity and location of temporary concrete barrier.  
All dimensions given for existing structure are approximate.

DESIGNED - WLW
CHECKED - ADL
DRAWN - RLW
CHECKED - ADL

**STAGE CONSTRUCTION DETAILS**  
**F.A.P 502 ROUTE IL 57 SEC. 54BR-1**  
**ADAMS COUNTY**  
**STATION 114+75.00**  
**STRUCTURE NO. 001-0014**

7/2/2007

\$FILE\$