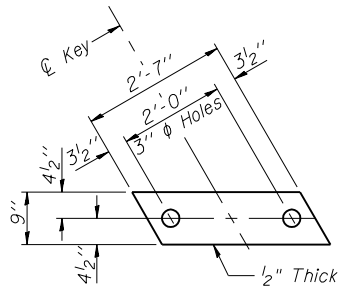


STATE OF ILLINOIS
DEPARTMENT OF TRANSPORTATION

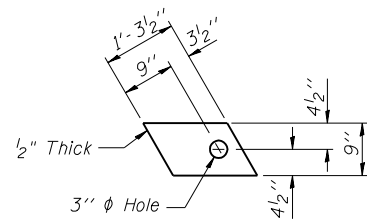
ROUTE NO.	SECTION	COUNTY	TOTAL SHEETS	SHEET NO.
F.A.P. 502	54BR-1	ADAMS	28	19
FED. ROAD DIST. NO. 7		ILLINOIS	FED. AID PROJECT	

Contract #72873

SHEET NO. 5
9 SHEETS

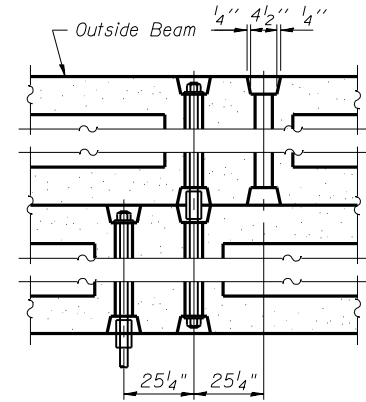


FABRIC BEARING PAD
(Interior)

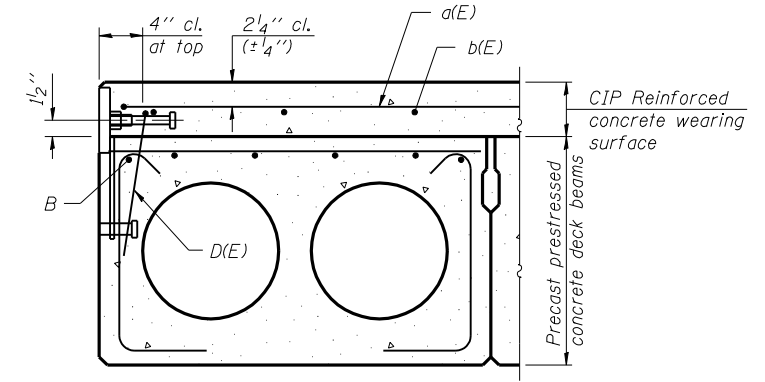
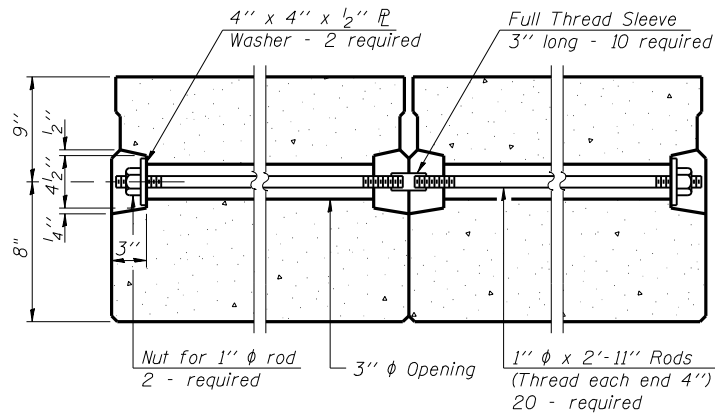


FABRIC BEARING PAD
(Exterior and Stage Const.)

FIXED

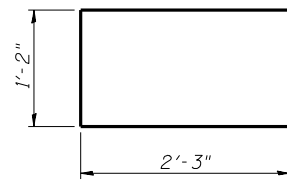


TYPICAL TRANSVERSE TIE ASSEMBLY

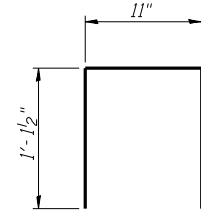


SECTION THRU EXTERIOR BEAMS

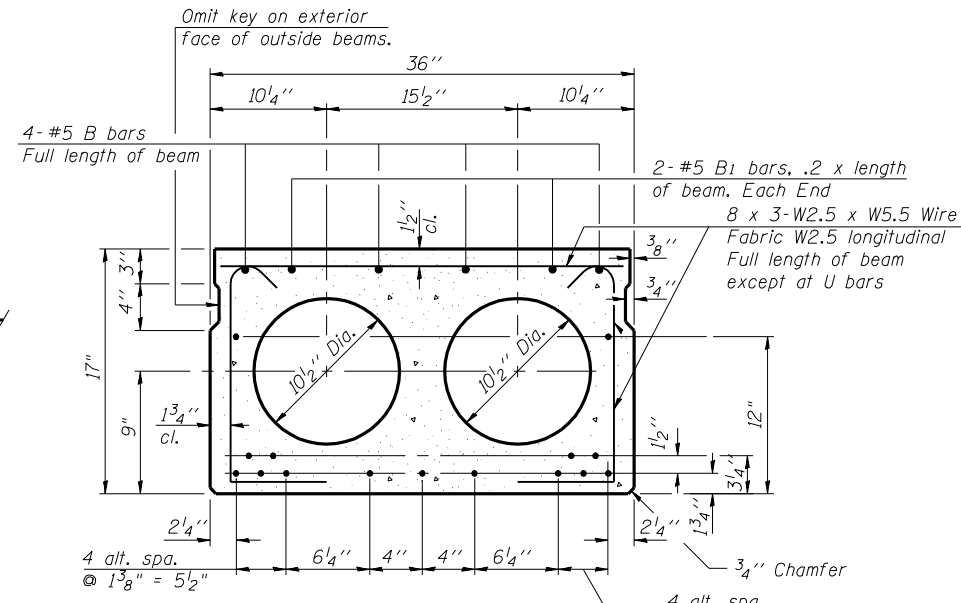
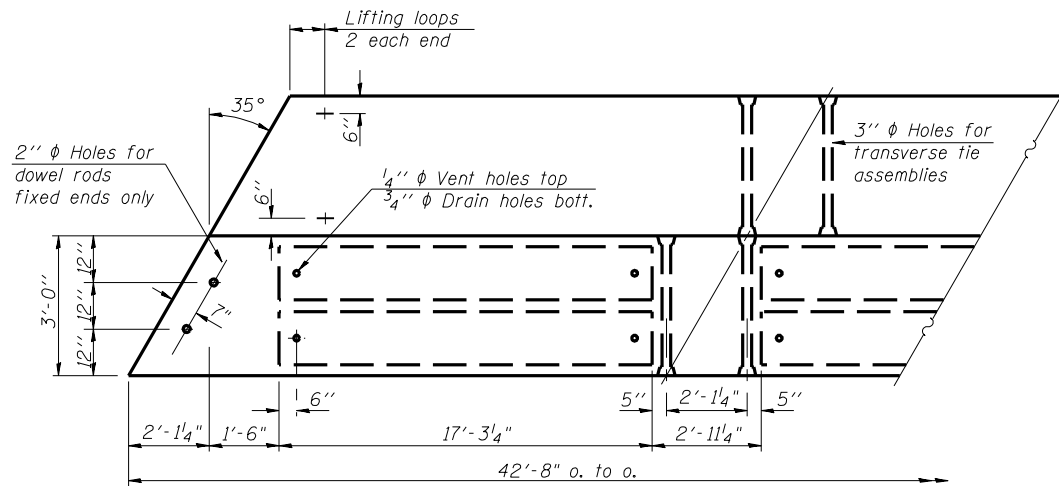
See Typical Section for strand pattern, dimensions and bar call outs.



BAR U1



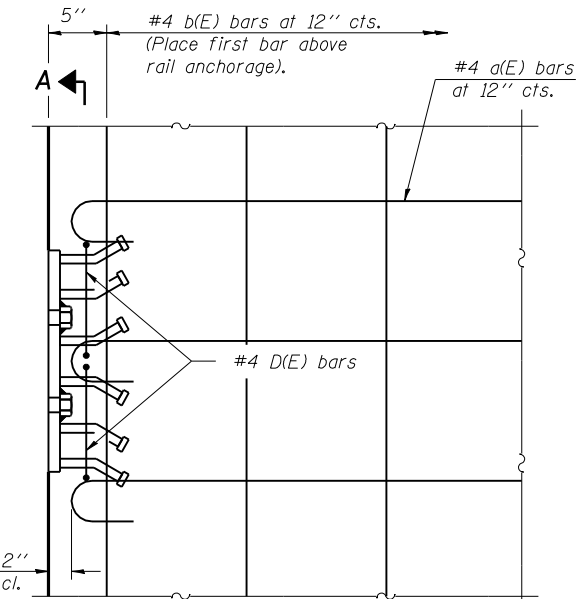
BAR D(E)



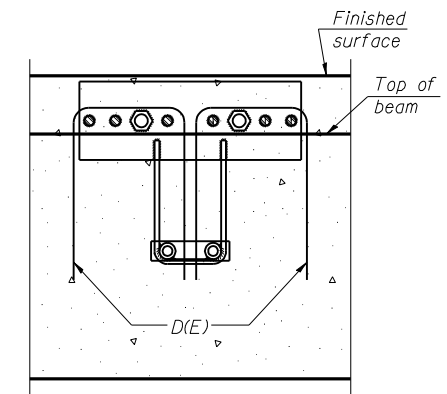
TYPICAL SECTION

1/2" ϕ Strands, Each Strand Stressed to 30,900 Lbs.
9-Strands 1 3/4" up, 4-Strands 3/4" up, 2-Strands 12" up

Note:
Place strands symmetrically about ϕ of beam.



PLAN



SECTION A-A

Notes:
The rail anchorage shall be cast with the beam and the wearing surface shall be cast in the field. Formwork necessary for the wearing surface may be secured utilizing the bottom rail anchorage inserts and/or additional inserts cast into the beam. Drilling into the beam will not be permitted.

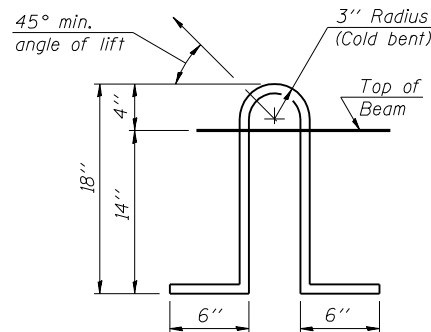
NOTES

Prestressing steel shall be uncoated high strength, low relaxation 7-wire strand, Grade 270. The nominal diameter shall be 1/2" and the nominal cross-sectional area shall be 0.153 sq. in. Lifting loops shall be 2 - 1/2" ϕ - 270 ksi strands, as shown. Non prestressing steel shall conform to ASTM A 706 (IL MOD), Grade 60. The bearing seat surfaces shall be adjusted by shimming to assure firm and even bearing. Two 1/8" fabric adjusting shims of the dimensions of the Exterior Bearing Pad shall be provided for each bearing. Keyway surfaces shall be cleaned to remove form oil or other bond breaking material prior to shipment of the beams. Cleaning shall be done by sandblasting the keyway areas between top of the beam and the bottom edge of the key. Corrosion Inhibitor, per Article 1020.05(b)(12) of the Standard Specifications, shall be used in the concrete for precast prestressed concrete deck beams. Required Release Strength, f'ci, shall be 4000 p.s.i. See sheet 6 of 7 for location of rail inserts.

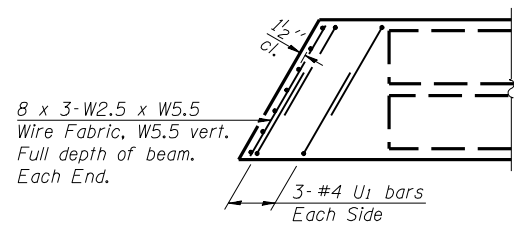
BILL OF MATERIAL

Precast Prestressed Concrete Deck Beams (17" Depth)	Sq. Ft.	1,408
-----------------------------------------------------	---------	-------

SUPERSTRUCTURE DETAILS
F.A.P 502 ROUTE IL 57 SEC. 54BR-1
ADAMS COUNTY
STATION 114+75.00
STRUCTURE NO. 001-0014



LIFTING LOOP DETAIL



END PLAN

PLAN

DESIGNED - WLW
CHECKED - ADL
DRAWN - BGJ
CHECKED - ADL