

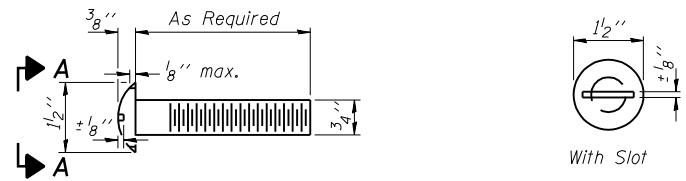
STATE OF ILLINOIS
DEPARTMENT OF TRANSPORTATION

ROUTE NO.	SECTION	COUNTY	TOTAL SHEETS	SHEET NO.
F.A.P. 502	54BR-1	ADAMS	28	20
FED. ROAD DIST. NO. 7		ILLINOIS	FED. AID PROJECT	

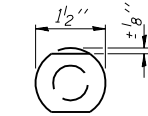
SHEET NO. 6
9 SHEETS

Contract #72873

DETAIL OF 3/4" φ ROUND HEAD BOLT



With Slot

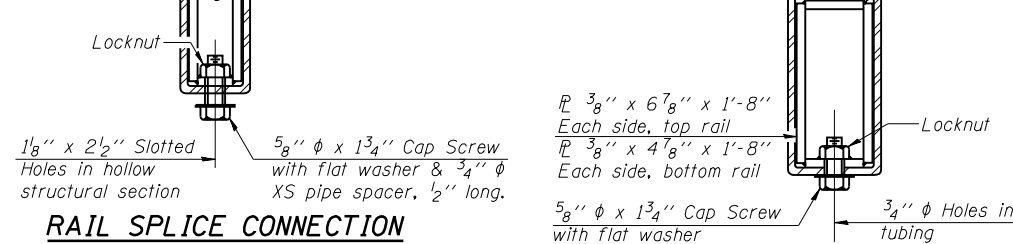


Without Slot or Recess

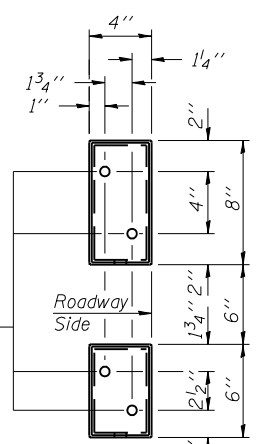
VIEW A-A

4-3/4" φ x 6" Round Head Bolts (With slot or approved recess in head) with locknut & flat washer. 7/8" φ holes in hollow structural section may be drilled in the field.

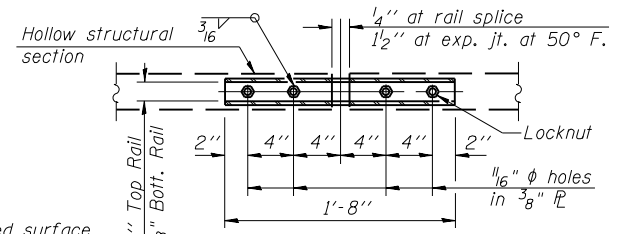
RAIL SPLICE CONNECTION AT EXPANSION JT.



SECTION AT RAIL SPLICE

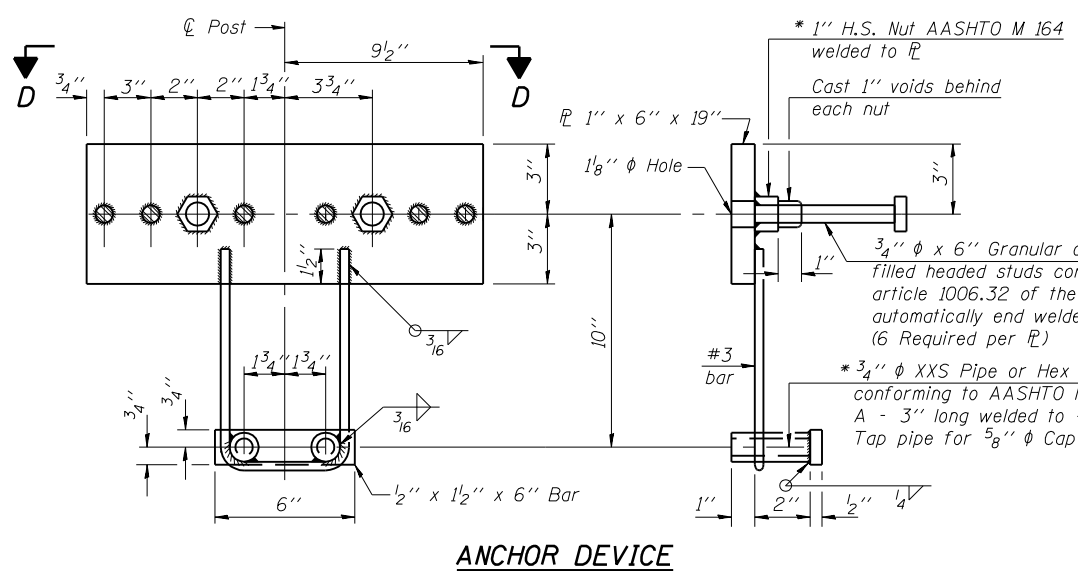


PLAN-BOTT. SPLICE R TYPICAL



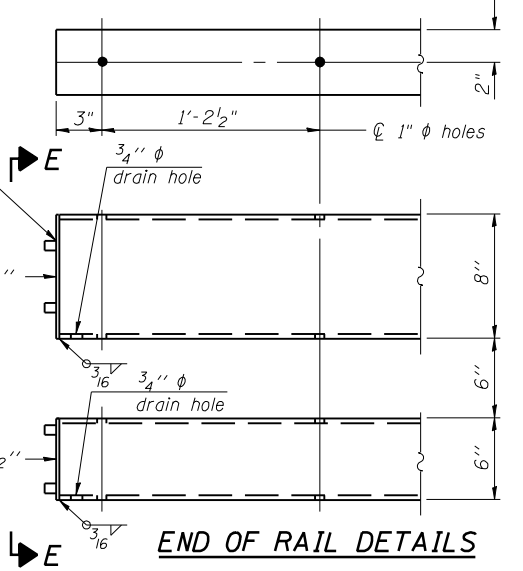
4 - 5/8" reduced base welded studs. Provide 4 - 5/8" washers and self-locking nuts or nuts and jam nuts for guardrail connection shown on Std. 631032

VIEW D-D



ANCHOR DEVICE

* Threaded areas shall be plugged or blocked off during casting of beam. Galvanized after fabrication.



END OF RAIL DETAILS

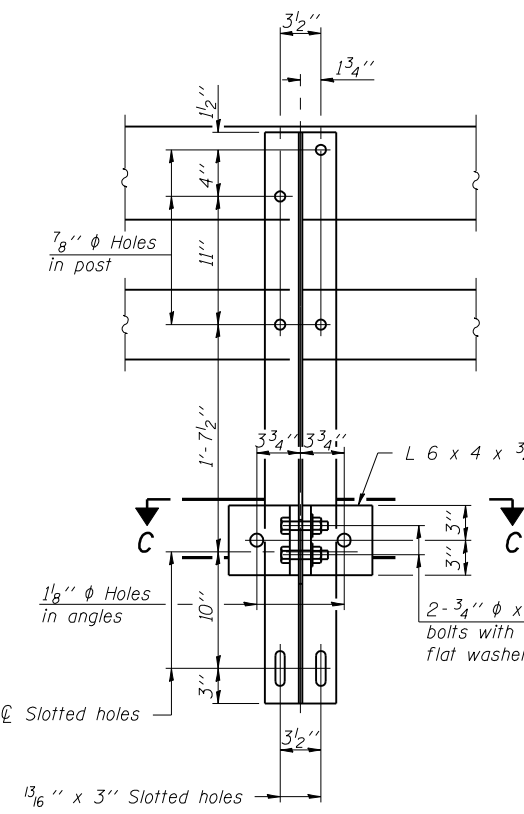
Notes:
All field drilled holes shall be coated with an approved zinc rich paint before erection.
For multi-span bridges, sufficient 1/4" x 6" x 1'-2" galvanized steel shims shall be provided to align rail between adjacent spans. Cost included with Steel Bridge Rail, Type SM.
Steel rail elements shall be galvanized according to Article 509.05 of the Standard Specifications.
** The studs of the anchor devices shall be placed below the top reinforcement bars and the outermost longitudinal reinforcement bar shall be placed directly above the studs of the rail post anchor device.

BILL OF MATERIAL

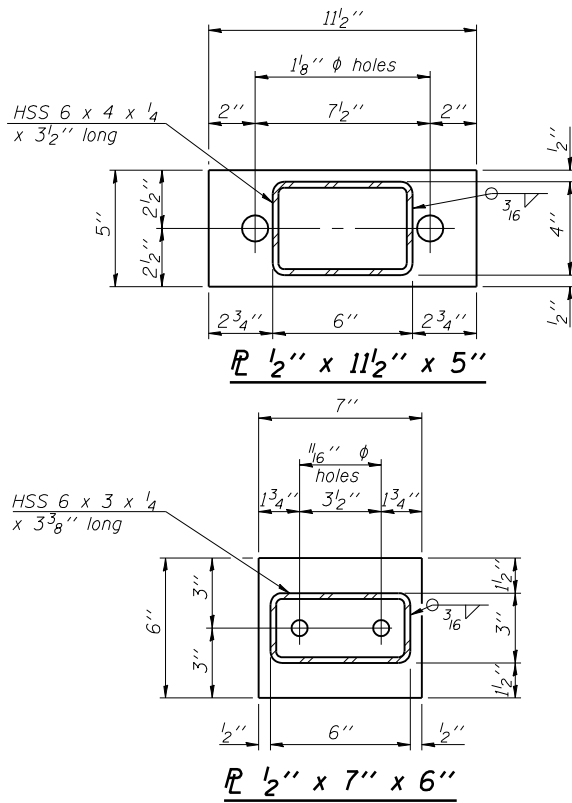
Item	Unit	Quantity
Steel Railing, Type SM	Foot	86

STEEL RAILING, TYPE SM
WITH CONCRETE WEARING SURFACE
F.A.P 502 ROUTE IL 57 SEC. 54BR-1
ADAMS COUNTY
STATION 114+75.00
STRUCTURE NO. 001-0014

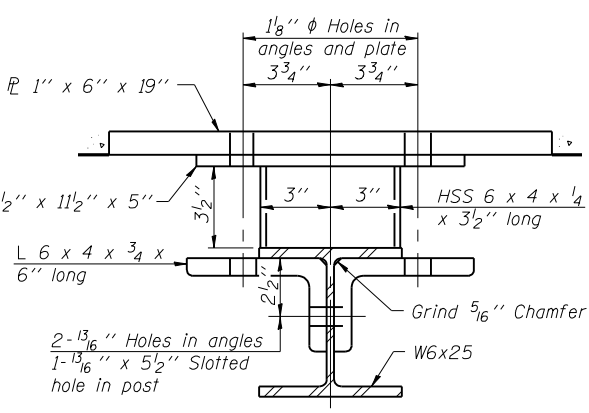
SECTION B-B



SECTION AT RAIL POST



SECTION C-C



DESIGNED - WLW
CHECKED - ADL
DRAWN - BGJ
CHECKED - ADL
R-34CWS

11-1-06

(6'-3" Maximum Post Spacing) (5" minimum to 7 1/8" maximum CWS thickness)

7/2/2007

\$FILE\$