

F.A.P. RTE.	SECTION	COUNTY	TOTAL SHEETS	SHEET NO.
502	54BR-1	ADAMS	28	1

INDEX OF SHEETS

- 1 COVER SHEET
- 2 GENERAL NOTES
- 3-5 SUMMARY OF QUANTITIES
- 6 TYPICAL SECTIONS
- 7 SCHEDULE OF QUANTITIES
- 8 ALIGNMENT & BENCHMARK DATA
- 9-12 TRAFFIC CONTROL & PROTECTION
- 13-14 PLAN & PROFILE
- 15-23 S.N. 001-0014 PLANS
- 24 MISC DETAILS - BRIDGE APPROACH PAVEMENT (SP)
- 25 MISC DETAILS - TRAFFIC BARRIER TERMINAL, TY 6A (SP)
- 26 MISC DETAILS - ENTRANCE DETAILS
- 27-28 CROSS SECTIONS

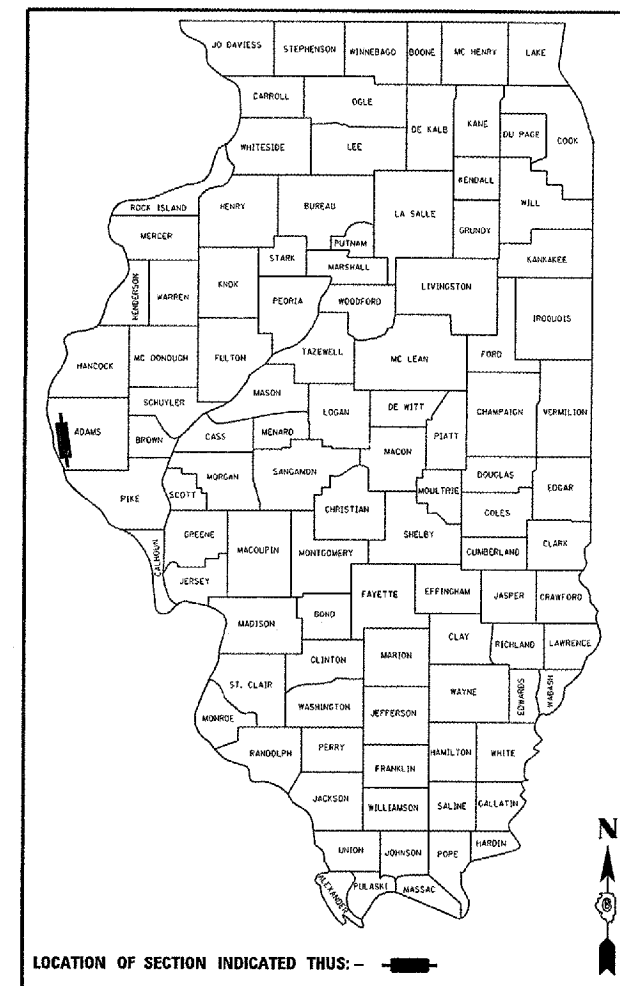
STATE OF ILLINOIS
DEPARTMENT OF TRANSPORTATION
DIVISION OF HIGHWAYS

PROPOSED HIGHWAY PLANS

FAP ROUTE 502 (IL RTE. 57)
SECTION 54BR-1
PROJECT: BHF-0502(014)
ADAMS COUNTY

BRIDGE RECONSTRUCTION OVER GHOST HOLLOW CREEK C-96-568-07

D-96-526-04



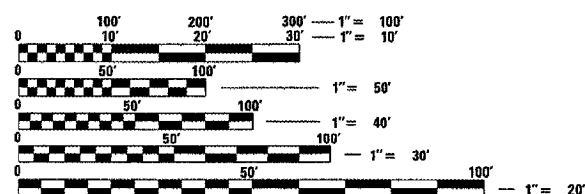
LOCATION OF SECTION INDICATED THUS: -

HIGHWAY STANDARDS

000001-04	701006-02
001001-01	701011-01
420401-05	701301-02
515001-02	701306-01
630001-07	701311-02
630301-04	701321-08
631032-03	701326-02
635006-02	702001-06
635011-01	704001-03
701001-01	780001-01

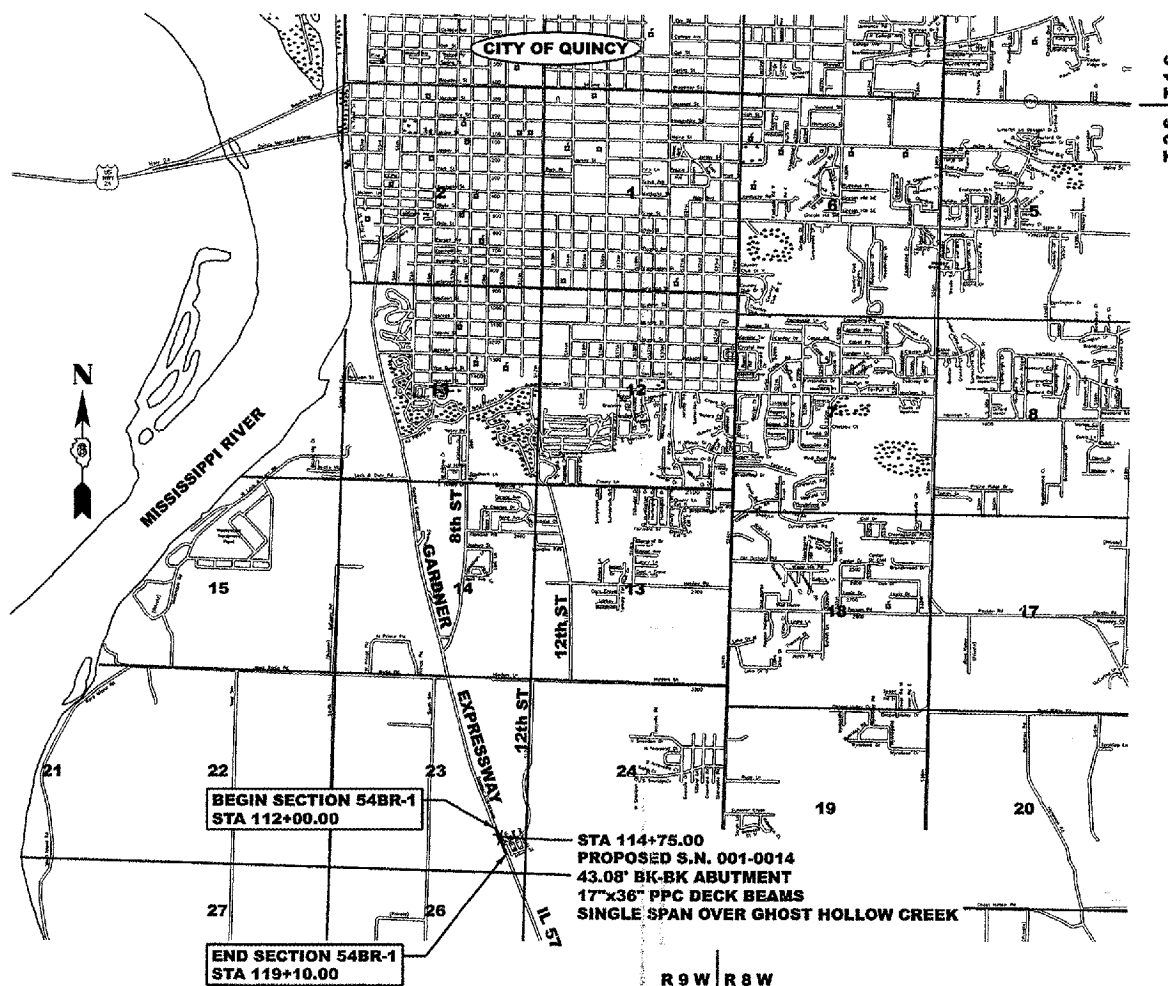
DESIGN DESIGNATION

MINOR ARTERIAL, NON URBAN
CLASS II TRUCK ROUTE
ADT = 4450 (2005)
DESIGN SPEED = 55 MPH



FULL SIZE PLANS HAVE BEEN PREPARED USING STANDARD ENGINEERING SCALES. REDUCED SIZED PLANS WILL NOT CONFORM TO STANDARD SCALES. IN MAKING MEASUREMENTS ON REDUCED PLANS, THE ABOVE SCALES MAY BE USED.

J.U.L.I.E.
JOINT UTILITY LOCATION INFORMATION FOR EXCAVATION
1-811-892-0123



LOCATION MAP

Scale: 1" = 2500'

GROSS LENGTH OF SECTION 54BR-1 = 710.00 FEET = 0.134 MILES

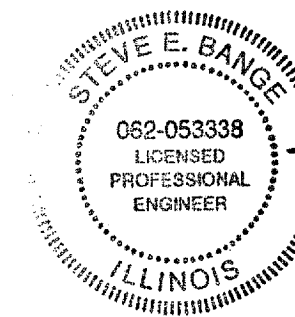
NET LENGTH OF SECTION 54BR-1 = 710.00 FEET = 0.134 MILES

STATE OF ILLINOIS
DEPARTMENT OF TRANSPORTATION
DIVISION OF HIGHWAYS

SUBMITTED July 3, 2007
[Signature]
DEPUTY DIRECTOR OF HIGHWAYS, REGION FOUR ENGINEER

August 17, 2007
[Signature]
ENGINEER OF DESIGN AND ENVIRONMENT

August 17, 2007
[Signature]
DIRECTOR, DIVISION OF HIGHWAYS



PLANS PREPARED BY:
KLINGNER & ASSOCIATES, P.C.
Engineers / Architects
606 North 24th Street | (217) 223-3670
Quincy, Illinois 62301 | Fax: 223-3603
Internet Address: www.klingner.com
STATE OF ILLINOIS DESIGN FIRM # 1842738

STEVE E. BANGE DATE
REGISTERED PROFESSIONAL ENGINEER
STATE OF ILLINOIS NO. 062-053338
LICENSE EXPIRES NOVEMBER 30, 2007

**PRINTED BY THE AUTHORITY
OF THE STATE OF ILLINOIS**

PROJECT ENGINEER: SAL MADONIA (217) 782-1751 SQUAD LEADER: MARCUS BRUCE (217) 524-0946

RATES OF APPLICATION TABLE

AGGREGATE (SURFACE, BASE, BASE, OR BACKFILL)	2.05 TON/CU YD
SUBBASE GRANULAR MATERIAL, TYPE C	1.80 TON/CU YD
STONE DUMPED RIPRAP	1.50 TON/CU YD
BITUMINOUS CONCRETE:	
BITUMINOUS MATERIALS (PRIME COAT)	0.00038 TON/SQ YD (on pavement)
BITUMINOUS MATERIALS (PRIME COAT)	0.001425 TON/SQ YD (on aggregate)
AGGREGATE PRIME COAT	0.002 TON/SQ YD
BITUMINOUS CONCRETE SURFACE / BINDER	0.056 TON/SQ YD ^{IN}
SEEDING AREAS:	
NITROGEN FERTILIZER NUTRIENT	90 LBS/ACRE
PHOSPHOROUS FERTILIZER NUTRIENT	90 LBS/ACRE
POTASSIUM FERTILIZER NUTRIENT	90 LBS/ACRE
AGRICULTURAL GROUND LIMESTONE	2 TON/ACRE
MULCH	2 TON/ACRE
TEMPORARY EROSION CONTROL SEEDING	100 LBS/ACRE
SODDING AREAS:	
NITROGEN FERTILIZER NUTRIENT	0.0186 LBS/SQ YD
PHOSPHOROUS FERTILIZER NUTRIENT	0.0011 LBS/SQ YD
POTASSIUM FERTILIZER NUTRIENT	0.0074 LBS/SQ YD
AGRICULTURAL GROUND LIMESTONE	0.000046 TON/SQ YD
SUPPLEMENTAL WATERING	0.009 UNITS/SQ YD (3 appl. @ 3GAL/ SQ YD)
LIME FOR LIME MODIFIED SOILS, 12"	0.02 TON/SQ YD
WATER FOR LIME MODIFIED SOILS, 12"	0.007 UNITS/SQ YD (1 UNIT = 1000 GAL)

GENERAL NOTES

- THE NOMINAL THICKNESS FOR BASE AND SURFACE COURSES ARE SHOWN ON THE TYPICAL SECTIONS, STANDARDS, SCHEDULES, OR SPECIAL DETAILS. THE CONSTRUCTED THICKNESS OF THE ABOVE ITEMS SHALL NOT BE LESS THAN 90 PERCENT OF THE NOMINAL THICKNESS AT ANY LOCATION.

THE THICKNESS OF BITUMINOUS MIXTURE SHOWN ON THE PLANS IS THE NOMINAL THICKNESS. DEVIATIONS FROM THE NOMINAL THICKNESS WILL BE PERMITTED WHEN SUCH DEVIATIONS OCCUR DUE TO IRREGULARITIES IN THE EXISTING SURFACE OR BASE ON WHICH THE BITUMINOUS MIXTURE IS PLACED.
- WHERE SECTION OR SUBSECTION MONUMENTS ARE ENCOUNTERED, THE ENGINEER SHALL BE NOTIFIED BEFORE SUCH MONUMENTS ARE REMOVED. THE CONTRACTOR SHALL PROTECT AND CAREFULLY PRESERVE ALL PROPERTY MARKERS AND MONUMENTS UNTIL THE OWNER AND AN AUTHORIZED SURVEYOR OR AGENT, HAS WITNESSED OR OTHERWISE REFERENCED THEIR LOCATION.
- ALL ELEVATIONS SHOWN REFER TO THE U.S.G.S. DATUM AT SEA LEVEL, UNLESS OTHERWISE NOTED.
- UTILITIES ARE SHOWN IN ACCORDANCE WITH THE BEST AVAILABLE INFORMATION, AND THEIR TRUE LOCATION IS NOT GUARANTEED TO BE AS SHOWN ON THE PLANS. IT WILL BE THE CONTRACTOR'S RESPONSIBILITY TO DETERMINE THE EXACT LOCATION OF ALL UTILITIES AND CARRY OUT HIS OR HER OPERATIONS ACCORDINGLY.
- THE FOLLOWING UTILITIES HAVE FACILITIES WITHIN THE LIMITS OF CONSTRUCTION:

AMERITECH	TELEPHONE	601 BROADWAY, QUINCY IL	217-224-9961
MCLEOD USA	TELEPHONE	510 MAINE ST, QUINCY, IL	217-228-7900
AMEREN CIPS	ELECTRICAL	700 JERSEY, QUINCY, IL	1-800-789-2477
AMEREN CIPS	GAS	700 JERSEY, QUINCY, IL	1-800-789-2477
INSIGHT COMMUNICATIONS	CABLE	2930 STATE ST, QUINCY, IL	217-222-5388
MILL CREEK WATER DISTRICT	WATER	6415 HICKORY GROVE NORTH, QUINCY, IL	217-224-9343
- ADJUSTMENTS OF UTILITY LOCATIONS SHALL BE MADE BY THE OWNER, UNLESS OTHERWISE NOTED.
- SEEDING SHALL BE DONE ON ALL AREAS THAT ARE DISTURBED BY CONSTRUCTION OPERATIONS AS DIRECTED BY THE ENGINEER. SEEDING SHALL BE PAID FOR ONLY WITHIN THE EXISTING RIGHT-OF-WAY LIMITS. ALL AREAS DISTURBED BY THE CONTRACTOR OUTSIDE THE PROPOSED CONSTRUCTION LIMITS SHALL BE SEED AS DIRECTED BY THE ENGINEER, AT THE CONTRACTOR'S EXPENSE. SEEDING WILL NOT BE PERMITTED AT ANY TIME WHEN THE GROUND IS FROZEN, WET, OR IN AN UNTILLABLE CONDITION. SEEDING CLASS 2 SHALL BE USED ON AREAS FLATTER THAN 3:1, SEEDING CLASS 3 SHALL BE USED ON AREAS 3:1 AND STEEPER.
- ANY REFERENCE TO A STANDARD IN THESE PLANS SHALL BE INTERPRETED TO MEAN THE EDITION, AS INDICATED BY THE SUB-NUMBER ON THE COVER SHEET.
- ALL DETAILS IN THESE PLANS SHALL GOVERN THE CONSTRUCTION OF THIS PROJECT, AND IN CASE OF CONFLICT WITH ANY STANDARD DRAWINGS INCLUDED, THE SAID DETAILS SHALL GOVERN.
- THE EXISTING ROAD SIGNS THAT INTERFERE WITH CONSTRUCTION SHALL BE REMOVED AND RELOCATED AS DIRECTED BY THE ENGINEER. THIS WORK WILL NOT BE PAID FOR SEPARATELY BUT SHALL BE CONSIDERED AS PART OF THE CONTRACT AND NO COMPENSATION WILL BE ALLOWED.
- EXISTING MAILBOXES SHALL BE TEMPORARILY RELOCATED FOR CONTINUED OPERATION AS NECESSARY DURING CONSTRUCTION. MAIL BOXES SHALL BE RELOCATED TO THEIR FINAL LOCATION AFTER CONSTRUCTION AS DIRECTED BY THE ENGINEER. THIS WORK WILL NOT BE PAID FOR SEPARATELY BUT SHALL BE CONSIDERED AS PART OF THE CONTRACT AND NO COMPENSATION WILL BE ALLOWED.
- THE CONTRACTOR SHALL BE RESPONSIBLE FOR PROTECTING UTILITY PROPERTY FROM CONSTRUCTION OPERATIONS AS OUTLINED IN ARTICLE 107.31 OF THE STANDARD SPECIFICATIONS.
- FOR STABILIZATION, ALL TYPE III BARRICADES SHALL REQUIRE A MINIMUM OF FOUR SAND BAGS PER BARRICADE.
- ANY REFERENCE TO "BITUMINOUS" SHOULD BE INTERPRETED TO MEAN "HOT MIX" TO REFLECT THE NEW STANDARD SPECIFICATIONS FOR ROAD AND BRIDGE CONSTRUCTION ADOPTED JANUARY 1, 2007, UNLESS OTHERWISE SPECIFIED IN THE SPECIFICATIONS.
- ANY DAMAGE TO THE UNDERGROUND FACILITIES CAUSED BY THE CONTRACTOR SHALL BE REPAIRED TO THE SATISFACTION OF THE DEPARTMENT AT THE CONTRACTOR'S EXPENSE, INCLUDING TEMPORARY REPAIRS WHICH MAY BE REQUIRED TO KEEP THE FACILITY OPERATIONAL WHILE MATERIAL IS BEING OBTAINED TO MAKE PERMANENT REPAIRS.
- ACCESS TO ALL PROPERTIES AND SIDE ROADS SHALL BE MAINTAINED AT ALL TIMES.
- GUARDRAIL MARKERS SHALL BE ATTACHED TO THE RAIL OF THE PROPOSED "TRAFFIC BARRIER TERMINAL TYPE 1 SPECIAL" RAIL ELEMENTS. MARKERS IN THE AREA OF THE TRAFFIC BARRIER TERMINAL TYPE 1 SPECIAL SHALL BE MOUNTED ON THE TOP OF THE NEAREST POST.
- ALL SAW CUTS REQUIRED FOR PAVEMENT, SHOULDER, SURFACE, AND STRUCTURE REMOVALS SHALL NOT BE MEASURED FOR PAYMENT. THE COST OF SAW CUTS WILL BE INCLUDED IN THE COST OF THE RESPECTIVE PAY ITEMS.
- REMOVAL OF RAISED REFLECTIVE MARKERS SHALL NOT BE MEASURED FOR PAYMENT. THE COST OF REMOVING THE RAISED REFLECTIVE PAVEMENT MARKERS SHALL BE INCLUDED IN THE COST OF THE PAY ITEM FOR BITUMINOUS SURFACE REMOVAL. NEW RAISED REFLECTIVE PAVEMENT MARKERS SHALL BE FURNISHED AND INSTALLED BY OTHERS UNDER A FUTURE CONTRACT.

F.A.P. RTE.	SECTION	COUNTY	TOTAL SHEETS	SHEET NO.
502	54BR-1	ADAMS	28	2
STA.		TO STA.		
FED. ROAD DIST. NO.		ILLINOIS FED. AID PROJECT		

DISTRICT SIX	
EXAMINED <u>June 26</u> 20 <u>07</u>	<u>[Signature]</u>
OPERATIONS ENGINEER	
EXAMINED <u>June 28</u> 20 <u>07</u>	<u>[Signature]</u>
PROGRAM IMPLEMENTATION ENGINEER	
EXAMINED <u>June 28</u> 20 <u>07</u>	<u>[Signature]</u>
PROGRAM DEVELOPMENT ENGINEER	

REVISIONS	
NAME	DATE

ILLINOIS DEPARTMENT OF TRANSPORTATION
 GENERAL NOTES
 FAP 502 (IL 57)
 SECTION 54BR-1
 ADAMS COUNTY

SCALE: VERT. _____
 HORIZ. _____
 DATE 6/28/2007

DRAWN BY _____
 CHECKED BY _____
 EBB

F.A.P. RTE.	SECTION	COUNTY	TOTAL SHEETS	SHEET NO.
502	54BR-1	ADAMS	28	3
STA.		TO STA.		
FED. ROAD DIST. NO.	ILLINOIS	FED. AID PROJECT		

SUMMARY OF QUANTITIES

CODE NO.	ITEM	SP. PROV.	UNIT	80% FED. 20% STATE TOTAL QUANTITIES	% FEDERAL		% STATE	
					X080-2A	CONSTRUCTION AND SAFETY TYPE CODE		
20200100	EARTH EXCAVATION		CU YD	30	30			
20200500	EARTH EXCAVATION (WIDENING)		CU YD	135	135			
25000200	SEEDING, CLASS 2		ACRE	0.3	0.3			
25000300	SEEDING, CLASS 3		ACRE	0.1	0.1			
25000400	NITROGEN FERTILIZER NUTRIENT		POUND	36	36			
25000500	PHOSPHORUS FERTILIZER NUTRIENT		POUND	36	36			
25000600	POTASSIUM FERTILIZER NUTRIENT		POUND	36	36			
25000700	AGRICULTURAL GROUND LIMESTONE		TON	0.8	0.8			
25100105	MULCH, METHOD 1		ACRE	0.4	0.4			
28000250	TEMPORARY EROSION CONTROL SEEDING		POUND	40	40			
31100300	SUB-BASE GRANULAR MATERIAL, TYPE A 4"		SO YD	212	212			
35501324	HOT-MIX ASPHALT BASE COURSE, 10"		SO YD	312	312			
35600716	HOT-MIX ASPHALT BASE COURSE WIDENING, 10"		SO YD	269	269			
40200100	AGGREGATE SURFACE COURSE, TYPE A		TON	47	47			
40600200	BITUMINOUS MATERIALS (PRIME COAT)		TON	1.0	1.0			
40600300	AGGREGATE (PRIME COAT)		TON	4.9	4.9			
40600990	TEMPORARY RAMP		SO YD	105	105			
40603540	POLYMERIZED HOT-MIX ASPHALT SURFACE COURSE, MIX "D", N70		TON	199	199			
40800050	INCIDENTAL HOT-MIX ASPHALT SURFACING		TON	27	27			
42001400	BRIDGE APPROACH PAVEMENT (SPECIAL)		SO YD	220	220			
42001430	BRIDGE APPROACH PAVEMENT CONNECTOR (FLEXIBLE)		SO YD	44	44			
44000100	PAVEMENT REMOVAL		SO YD	241	241			
44000155	HOT-MIX ASPHALT SURFACE REMOVAL, 1 1/2"		SO YD	2364	2364			
44000200	DRIVEWAY PAVEMENT REMOVAL		SO YD	31	31			
44004250	PAVED SHOULDER REMOVAL		SO YD	532	532			
48101200	AGGREGATE SHOULDERS, TYPE B		TON	37	37			
50101500	REMOVAL OF EXISTING SUPERSTRUCTURES		EACH	1	1			

REVISIONS	
NAME	DATE

ILLINOIS DEPARTMENT OF TRANSPORTATION
 SUMMARY OF QUANTITIES
 FAP 502 (IL 57)
 SECTION 54BR-1
 ADAMS COUNTY

SCALE: VERT. NONE
 HORIZ. NONE
 DATE 6/28/2007

DRAWN BY SEB
 CHECKED BY EBB

PLOT DATE = 7/2/2007
 PLOT SCALE = 1/8"=1'-0"
 PLOT FILE = 052884.dwg
 PLOT FILE = 052884.dwg

F.A.P. RTE.	SECTION	COUNTY	TOTAL SHEETS	SHEET NO.
502	54BR-1	ADAMS	28	4
STA.		TO STA.		
FED. ROAD DIST. NO.	ILLINOIS	FED. AID PROJECT		

SUMMARY OF QUANTITIES

CODE NO.	ITEM	SP. PROV.	UNIT	80% FED. 20% STATE TOTAL QUANTITIES	% FEDERAL		% STATE	
					XO80-2A	CONSTRUCTION	SAFETY	TYPE CODE
50300260	BRIDGE DECK GROOVING		SO YD	421	421			
50300300	PROTECTIVE COAT		SO YD	421	421			
50400305	PRECAST PRESTRESSED CONCRETE DECK BEAMS (17" DEPTH)		SO FT	1408	1408			
50800205	REINFORCEMENT BARS, EPOXY COATED		POUND	2015	2015			
50800515	BAR SPLICERS		EACH	44	44			
50901050	STEEL RAILING, TYPE SM		FOOT	86	86			
51500100	NAME PLATES		EACH	1	1			
* 63000000	STEEL PLATE BEAM GUARD RAIL, TYPE A		FOOT	243.8	243.8			
* 63100087	TRAFFIC BARRIER TERMINAL, TYPE 6A	✓	EACH	3	3			
* 63100167	TRAFFIC BARRIER TERMINAL TYPE 1, SPECIAL (TANGENT)	✓	EACH	1	1			
* 63100169	TRAFFIC BARRIER TERMINAL TYPE 1, SPECIAL (FLARED)	✓	EACH	3	3			
63200310	GUARDRAIL REMOVAL		FOOT	463	463			
67000400	ENGINEER'S FIELD OFFICE, TYPE A		CAL MO	8	8			
67100100	MOBILIZATION		L SUM	1	1			
70100460	TRAFFIC CONTROL AND PROTECTION, STANDARD 701306		L SUM	1	1			
70100500	TRAFFIC CONTROL AND PROTECTION, STANDARD 701326		L SUM	1	1			
70101205	TRAFFIC CONTROL AND PROTECTION, STANDARD 701321 (SPECIAL)		EACH	1	1			
70103815	TRAFFIC CONTROL SURVEILLANCE		CAL DA	7	7			
70106500	TEMPORARY BRIDGE TRAFFIC SIGNALS	✓	EACH	1	1			
70300100	SHORT-TERM PAVEMENT MARKING		FOOT	72	72			
70300230	TEMPORARY PAVEMENT MARKING - LINE 5"		FOOT	1600	1600			
70300280	TEMPORARY PAVEMENT MARKING - LINE 24"		FOOT	18	18			
70300630	TEMPORARY PAINT PAVEMENT MARKING LINE 5"		FOOT	3342	3342			
70300660	TEMPORARY PAINT PAVEMENT MARKING LINE 24"		FOOT	45	45			
70301000	WORK ZONE PAVEMENT MARKING REMOVAL		SO FT	2209	2209			
70400100	TEMPORARY CONCRETE BARRIER		FOOT	481	481			
70400200	RELOCATE TEMPORARY CONCRETE BARRIER		FOOT	481	481			

* SPECIALTY ITEMS

Rev.

REVISIONS	
NAME	DATE

ILLINOIS DEPARTMENT OF TRANSPORTATION
 SUMMARY OF QUANTITIES
 FAP 502 (IL 57)
 SECTION 54BR-1
 ADAMS COUNTY

SCALE: VERT. NONE
 HORIZ. DATE 6/28/2007

DRAWN BY SEB
 CHECKED BY EBB

PLOT DATE = 7/2/2007
 PLOT SCALE = 1/8"=1'-0"

F.A.P. RTE.	SECTION	COUNTY	TOTAL SHEETS	SHEET NO.
502	54BR-1	ADAMS	28	5
STA.		TO STA.		
FED. ROAD DIST. NO.	ILLINOIS	FED. AID PROJECT		

CODE NO.	ITEM	SP. PROV.	UNIT	80% FED. 20% STATE TOTAL QUANTITIES	% FEDERAL		% STATE	
					X080-2A	CONSTRUCTION AND SAFETY TYPE CODE		
* 78001120	PAINT PAVEMENT MARKING - LINE 5"		FOOT	1600	1600			
* 78001180	PAINT PAVEMENT MARKING - LINE 24"		FOOT	18	18			
* 78200410	GUARDRAIL MARKERS, TYPE A	✓	EACH	10	10			
* 78201000	TERMINAL MARKER - DIRECT APPLIED	✓	EACH	4	4			
X0325305	STRUCTURAL REPAIR OF CONCRETE (DEPTH EQUAL TO OR LESS THAN 5 INCHES)	✓	SQ FT	50	50			
X5030305	CONCRETE WEARING SURFACE, 5"	✓	SQ YD	157	157			
X7200201	WIDTH RESTRICTION SIGNING	✓	L SUM	1	1			
* XX005496	TRAFFIC BARRIER TERMINAL TYPE 6A (SPECIAL)	✓	EACH	1	1			
Z0001900	ASBESTOS BEARING PAD REMOVAL	✓	EACH	24	24			
Z001379B	CONSTRUCTION LAYOUT	✓	L SUM	1	1			
Z0030250	IMPACT ATTENUATORS, TEMPORARY (NON- REDIRECTIVE), TEST LEVEL 3	✓	EACH	2	2			
Z0030260	IMPACT ATTENUATORS, TEMPORARY (FULLY REDIRECTIVE, NARROW), TEST LEVEL 3	✓	EACH	2	2			
Z0030330	IMPACT ATTENUATORS, RELOCATE (FULLY REDIRECTIVE), TEST LEVEL 3	✓	EACH	2	2			
Z0030350	IMPACT ATTENUATORS, RELOCATE (NON- REDIRECTIVE), TEST LEVEL 3	✓	EACH	2	2			
Z0073500	TEMPORARY SUPPORT SYSTEM	✓	L SUM	1	1			

* SPECIALTY ITEMS

PLOT DATE = 7/2/2007
 PLOT TIME = 10:55:59 AM
 PLOT SCALE = 1/8"=1'-0"

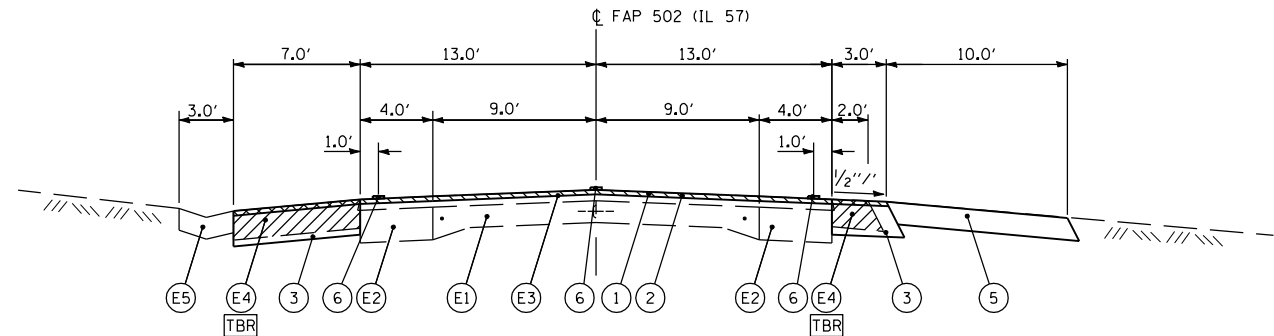
REVISIONS	
NAME	DATE

ILLINOIS DEPARTMENT OF TRANSPORTATION
 SUMMARY OF QUANTITIES
 FAP 502 (IL 57)
 SECTION 54BR-1
 ADAMS COUNTY

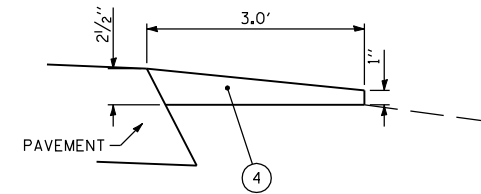
SCALE: VERT. NONE
 DATE 6/28/2007

DRAWN BY SEB
 CHECKED BY EBB

F.A.P. RTE.	SECTION	COUNTY	TOTAL SHEETS	SHEET NO.
502	54BR-1	ADAMS	28	6
STA.		TO STA.		
FED. ROAD DIST. NO.	ILLINOIS	FED. AID PROJECT		

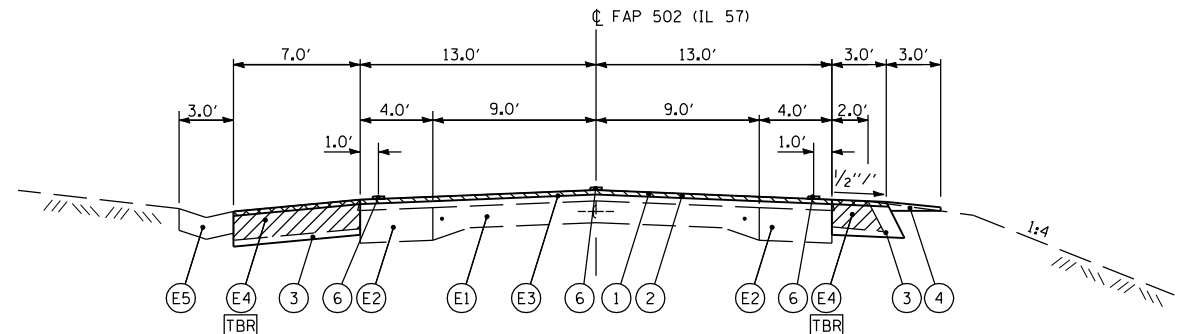


TYPICAL FAP 502 (IL 57) SECTION
STA 112+10.00 TO STA 112+34.63

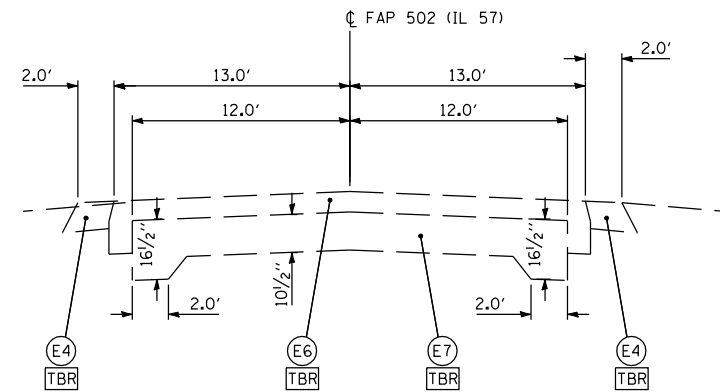


AGGREGATE SHOULDER, TYPE B (WEDGE) DETAIL

- LEGEND**
- (E1) EXISTING 9"-6"-6" PAVEMENT
 - (E2) EXISTING HOT-MIX ASPHALT BASE COURSE WIDENING
 - (E3) EXISTING HOT-MIX ASPHALT SURFACE AND BINDER COURSE, 4 3/4" AND VARIES
 - (E4) EXISTING HOT-MIX ASPHALT SHOULDERS, 8"
 - (E5) EXISTING CONCRETE V-GUTTER, TYPE A
 - (E6) EXISTING HOT MIX ASPHALT SURFACE AND BINDER COURSE, 6" AND VARIES
 - (E7) EXISTING REINFORCED PCC BASE COURSE
 - (1) PROPOSED HOT-MIX ASPHALT SURFACE REMOVAL, 1 1/2"
 - (2) PROPOSED POLYMERIZED HOT-MIX ASPHALT SURFACE COURSE, MIX "D", N70, 1 1/2"
 - (3) PROPOSED HOT-MIX ASPHALT BASE COURSE, 10" (WIDTH > 6') OR PROPOSED HOT-MIX ASPHALT BASE COURSE WIDENING, 10" (WIDTH < 6')
 - (4) PROPOSED AGGREGATE SHOULDER, TYPE B
 - (5) PROPOSED AGGREGATE SHOULDER, TYPE B, 6"
 - (6) PROPOSED PAINT PAVEMENT MARKING - LINE 5"



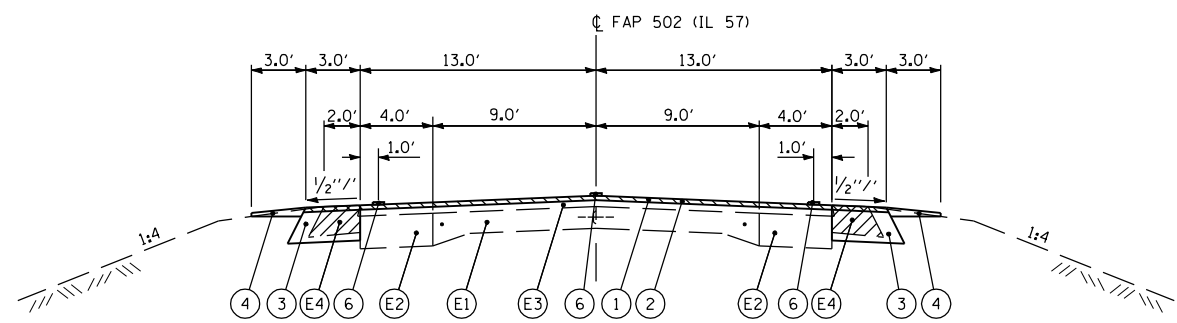
TYPICAL FAP 502 (IL 57) SECTION
STA 112+34.63 TO STA 113+32.76
STA 116+57.00 TO STA 119+10.00



EX FAP 502 (IL 57) SECTION (APPROACH PAVEMENT)
STA 114+25 TO STA 114+53
STA 114+96 TO STA 115+25

MIXTURE REQUIREMENTS

MIXTURE NUMBER:	1	2
LOCATIONS:	IL 57	IL 57
MIXTURE USES:	HMA SURFACE COURSE	HMA BASE CS (WIDENING)
AC/PG:	SBS PG70-22	PG64-22
DESIGN AIR VOIDS:	4.0% @ N DESIGN = 70	4.0% @ N DESIGN = 70
MIXTURE COMPOSITION (GRADATION MIXTURE):	IL 9.5 or 12.5	IL 19.0
FRICITION AGGREGATE:	MIX "D"	N/A



TYPICAL FAP 502 (IL 57) SECTION
STA 113+32.76 TO STA 114+17.56
BRIDGE APPROACH PAVEMENT STA 114+17.56 TO STA 114+53.56
BRIDGE OMISSION STA 114+53.56 TO STA 114+96.44
BRIDGE APPROACH PAVEMENT STA 114+96.44 TO STA 115+32.44
STA 115+32.44 TO STA 116+57.00

REVISIONS		ILLINOIS DEPARTMENT OF TRANSPORTATION
NAME	DATE	
		TYPICAL SECTIONS FAP 502 (IL 57) SECTION 54BR-1 ADAMS COUNTY
SCALE:	VERT. NONE HORIZ. 6/28/2007	DRAWN BY SEB CHECKED BY EBB

PLOT DATE = 7/2/2007
PLOT SCALE = 1/8"=1'-0"
PLOT FILE = 10556824 / IN

F.A.P. RTE.	SECTION	COUNTY	TOTAL SHEETS	SHEET NO.
502	54BR-1	ADAMS	28	7
STA.		TO STA.		
FED. ROAD DIST. NO.		ILLINOIS	FED. AID PROJECT	

GUARDRAIL SCHEDULE

LOCATION	63000000	63100087	63100167	63100169	XX005496	78201000	78200410
	STEEL PLATE BEAM GUARD RAIL, TYPE A	TRAFFIC BARRIER TERMINAL TYPE 6A	TRAFFIC BARRIER TERMINAL TYPE 1, SP (TANGENT)	TRAFFIC BARRIER TERMINAL TYPE 1, SP (FLARED)	TRAFFIC BARRIER TERMINAL TYPE 6A (SPECIAL)	TERMINAL MARKER - DIRECT APPLIED	GUARDRAIL MARKERS, TYPE A
	FOOT	EACH	EACH	EACH	EACH	EACH	EACH
STA 112+60.2 TO STA 113+10.2 LT	-	-	1	-	-	1	3
STA 113+10.2 TO STA 114+22.7 LT	112.5	-	-	-	-	-	
STA 114+22.7 TO STA 114+67.9 LT	-	1	-	-	-	-	
STA 112+62.1 TO STA 113+12.1 RT	-	-	-	1	-	1	3
STA 113+12.1 TO STA 113+99.6 RT	87.5	-	-	-	-	-	
STA 113+99.6 TO STA 114+44.8 RT	-	1	-	-	-	-	
STA 114+82.1 TO STA 115+17.9 RT	-	-	-	-	1	-	2
STA 115+17.9 TO STA 115+67.9 RT	-	-	-	1	-	1	
STA 115+05.2 TO STA 115+50.4 LT	-	1	-	-	-	-	2
STA 115+50.4 TO STA 115+94.2 LT	43.8	-	-	-	-	-	
STA 115+94.2 TO STA 116+44.2 LT	-	-	-	1	-	1	
TOTALS:	243.8	3	1	3	1	4	10

REMOVAL SCHEDULE

LOCATION		44000100	44000155	44000200	44004250
		PAVEMENT REMOVAL	HOT-MIX ASPHALT SURFACE REMOVAL, 1 1/2"	DRIVEWAY PAVEMENT REMOVAL	PAVED SHOULDER REMOVAL
		SO YD	SO YD	SO YD	SO YD
112+00.0 TO 114+17.6	LT	-	460.7	-	123.8
	RT	-	376.8	-	47.9
114+17.6 TO 114+53.6	LT	59.2	-	-	8.2
	RT	62.5	-	-	-
114+90.4 TO 115+26.4	LT	58.8	-	-	5.1
	RT	60.6	-	-	-
115+26.4 TO 119+10.0	LT	-	845.6	-	252.2
	RT	-	681.2	30.8	95.2
TOTALS:		241	2364	31	532

PAVING SCHEDULE

LOCATION		31100300	35501324	25000400	40600200	40600300	40603540	42001400	42001430	48101200
		SUB-BASE GRANULAR MATERIAL, TYPE A 4"	HOT-MIX ASPHALT BASE COURSE, 10"	HOT-MIX ASPHALT BASE COURSE WIDENING, 10"	BITUMINOUS MATERIALS (PRIME COAT)	AGGREGATE (PRIME COAT)	POLY HOT-MIX ASPHALT SURFACE, MIX "D", N70	BRIDGE APPROACH PAVEMENT (SPECIAL)	BRIDGE APPROACH PVMT CONNECTOR (FLEXIBLE)	AGGREGATE SHOULDERS, TYPE B
		SO YD	SO YD	SO YD	TON	TON	TON	SO YD	SO YD	TON
112+00.0 TO 114+17.6	LT	-	107.9	32.0	0.2	0.9	38.7	-	-	2.8
	RT	-	-	69.1	0.2	0.8	31.7	-	-	15.9
114+17.6 TO 114+53.6	LT	53.0	-	-	-	-	-	55.0	11.0	1.5
	RT	53.0	-	-	-	-	-	55.0	11.0	0.8
114+90.4 TO 115+26.4	LT	53.0	-	-	-	-	-	55.0	11.0	0.7
	RT	53.0	-	-	-	-	-	55.0	11.0	1.6
115+26.4 TO 119+10.0	LT	-	204.5	38.7	0.3	1.7	70.9	-	-	4.2
	RT	-	-	129.2	0.3	1.5	57.2	-	-	9.5
TOTALS:		212	312	269	1.0	4.9	199	220	44	37

EARTHWORK SCHEDULE

LOCATION		20200100	20200500
		EARTH EXCAVATION	EARTH EXCAVATION (WIDENING)
		CU YD	CU YD
112+00 TO 114+27 LT		-	10.8
NORTH APPROACH LT		7.5	-
SOUTH APPROACH LT		7.5	-
115+41 TO 119+10 LT		-	18.8
112+00 TO 114+08 RT		-	36.0
NORTH APPROACH RT		7.5	-
SOUTH APPROACH RT		7.5	-
115+23 TO 119+10 RT		-	69.6
TOTALS:		30	135

SEEDING SCHEDULE

LOCATION		25000200	25000300	25000400	25000500	25000600	25000700	25100105	28000250
		SEEDING, CLASS 2	SEEDING, CLASS 3	NITROGEN FERTILIZER NUTRIENT	PHOSPHORUS FERTILIZER NUTRIENT	POTASSIUM FERTILIZER NUTRIENT	AGRICULTURAL GROUND LIMESTONE	MULCH, METHOD 1	TEMPORARY EROSION CONTROL SEEDING
		ACRE	ACRE	POUND	POUND	POUND	TON	ACRE	POUND
112+00 TO 114+63 LT		0.06	-	5.4	5.4	5.4	0.12	0.06	6
114+63 TO 1115+13 LT		-	0.05	4.5	4.5	4.5	0.10	0.05	5
115+13 TO 119+10 LT		0.09	-	8.1	8.1	8.1	0.18	0.09	9
112+00 TO 114+39 RT		0.05	-	4.5	4.5	4.5	0.10	0.05	5
114+39 TO 114+85 RT		-	0.05	4.5	4.5	4.5	0.10	0.05	5
114+85 TO 119+10 RT		0.10	-	9.0	9.0	9.0	0.20	0.10	10
TOTALS:		0.3	0.1	36	36	36	0.8	0.4	40

TEMPORARY RAMP SCHEDULE

LOCATION	20200100
	TEMPORARY RAMP
	SO YD
STA 112+00	20.2
NORTH BRIDGE APPROACH	22.1
SOUTH BRIDGE APPROACH	22.1
STA 119+10	20.0
SOUTH 12TH STREET	20.4
TOTALS:	105

PAVEMENT STRIPING SCHEDULE

LOCATION		78001120	78001180	70300100	70300230	70300280	70300280
		PAINT PAVEMENT MARKING - LINE 5"		SHORT-TERM PAVEMENT MARKING	TEMPORARY PAVEMENT MARKING - LINE 5"	TEMPORARY PAVEMENT MARKING - LINE 24"	WORK ZONE PAVEMENT MARKING REMOVAL
		WHITE	YELLOW	FOOT	FOOT	FOOT	SO FT
112+00.0 TO 119+10.0	LT	-	710	-	710	18	331.8
	CL	180	-	72	180	-	99.0
	RT	-	710	-	710	-	295.8
STAGE CONSTRUCTION		-	-	-	-	-	1482.5
TOTALS:		1600	18	72	1600	18	2209

ENTRANCE SCHEDULE

LOCATION		40200100	40800050
		AGGREGATE SURFACE COURSE, TYPE A	INCIDENTAL HOT-MIX ASPHALT SURFACING
		TON	TON
112+37.5 RT	AGG CE	10.0	10.9
115+90.4 RT	BIT PE	20.0	12.5
116+47.3 RT	AGG PE	17.0	4.0
TOTALS:		47	27

GUARDRAIL REMOVAL SCHEDULE

LOCATION		63200310
		GUARDRAIL REMOVAL
		FOOT
112+64 TO 114+42 RT		178
113+62 TO 114+65 LT		103
114+84 TO 115+63 RT		79
115+07 TO 116+10 LT		103
TOTALS:		463

REVISIONS	
NAME	DATE

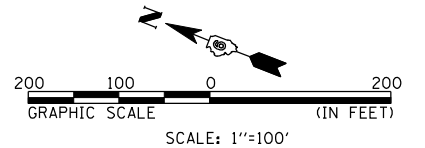
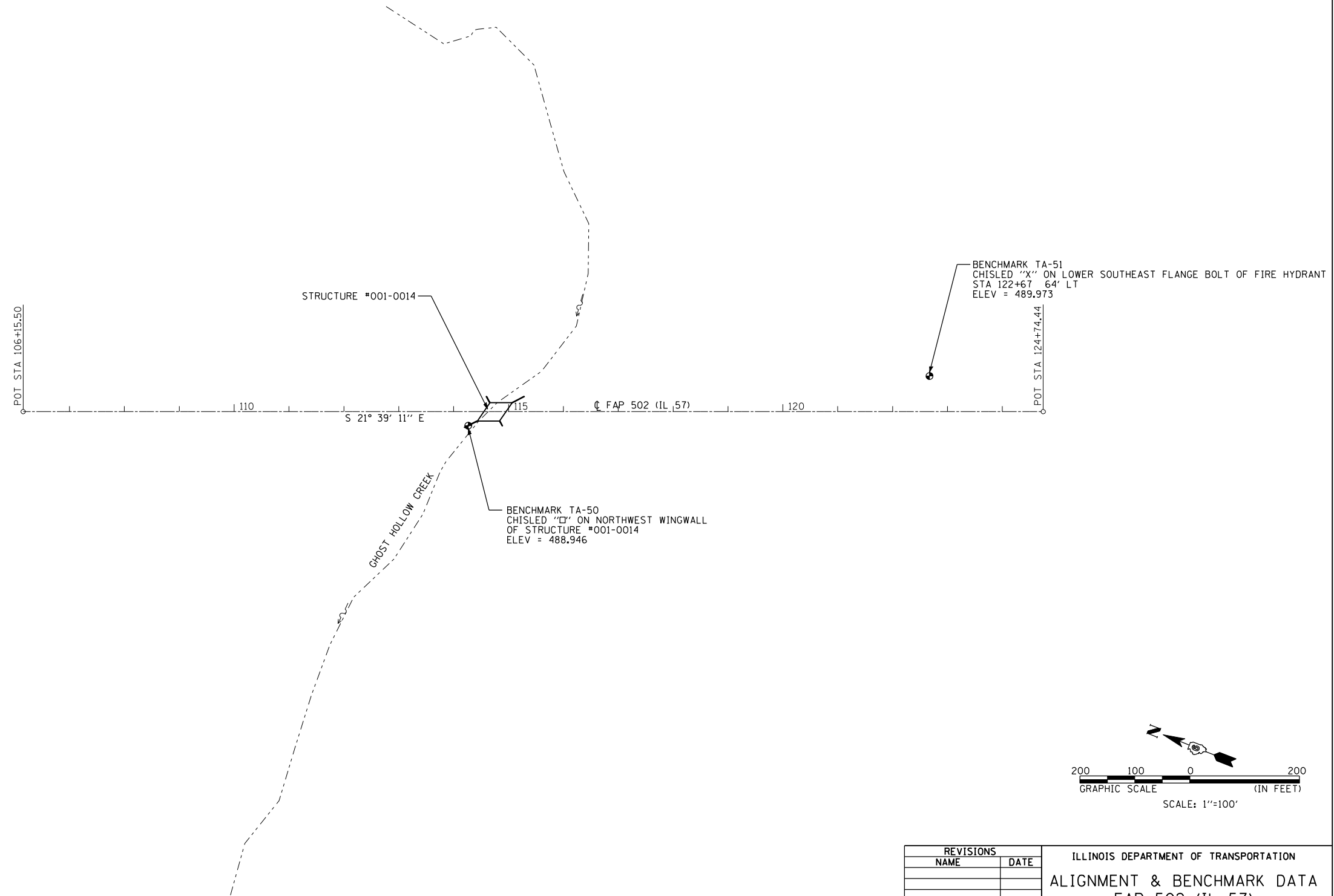
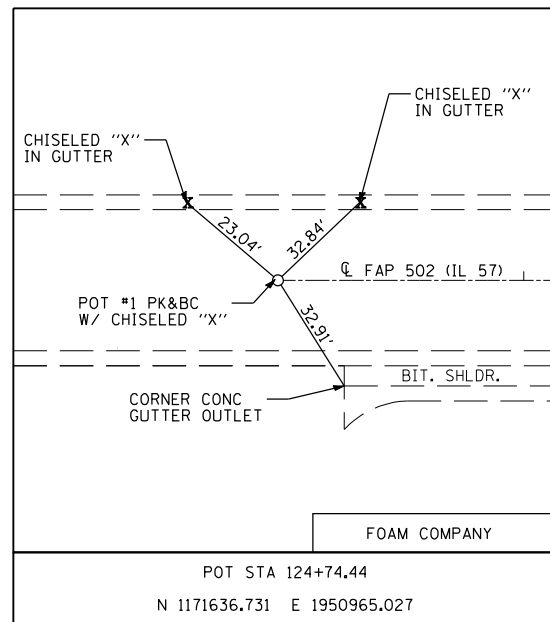
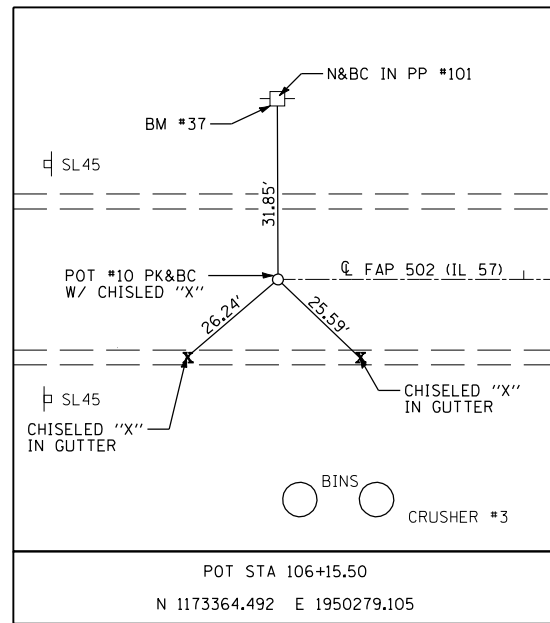
ILLINOIS DEPARTMENT OF TRANSPORTATION
SCHEDULE OF QUANTITIES
 FAP 502 (IL 57)
 SECTION 54BR-1
 ADAMS COUNTY

SCALE: VERT. NONE
 HORIZ. DATE 6/28/2007

DRAWN BY SEB
 CHECKED BY EBB

PLOT DATE = 7/2/2007
 PLOT SCALE = 1/8"=1'-0"
 PLOT SCALE = 1/8"=1'-0"
 PLOT SCALE = 1/8"=1'-0"

F.A.P. RTE.	SECTION	COUNTY	TOTAL SHEETS	SHEET NO.
502	54BR-1	ADAMS	28	8
STA.		TO STA.		
FED. ROAD DIST. NO.	ILLINOIS	FED. AID PROJECT		



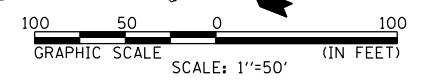
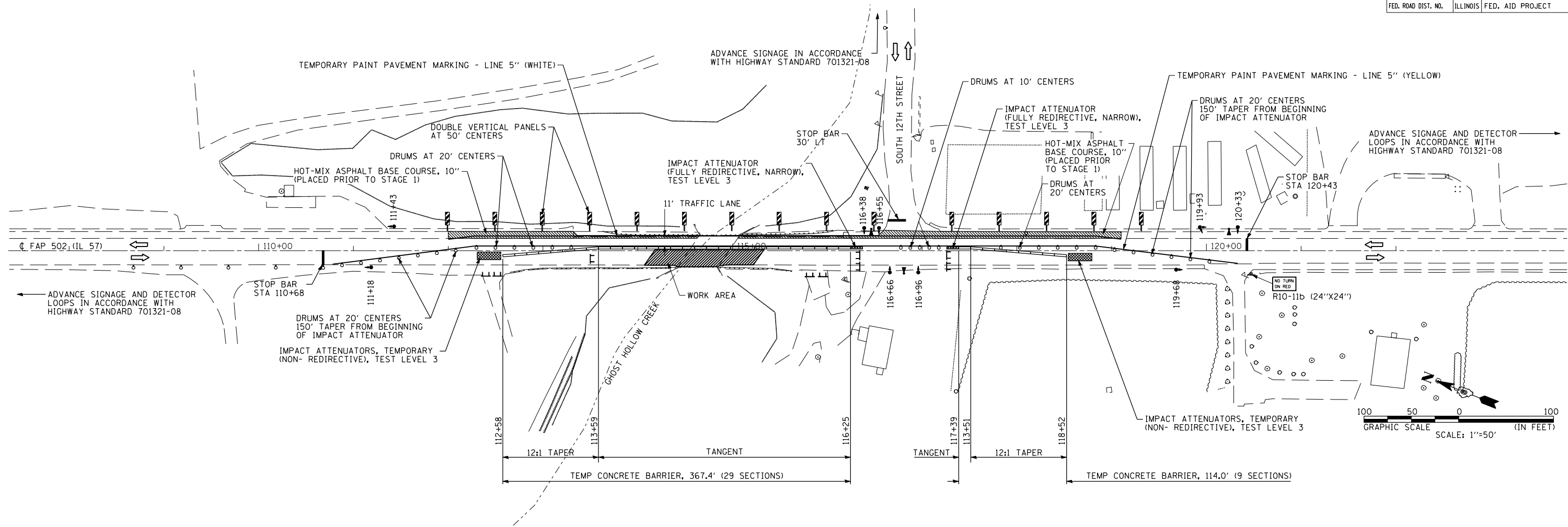
REVISIONS	
NAME	DATE

ILLINOIS DEPARTMENT OF TRANSPORTATION
ALIGNMENT & BENCHMARK DATA
FAP 502 (IL 57)
SECTION 54BR-1
ADAMS COUNTY

SCALE: VERT. 1"=100'
HORIZ. 1"=100'
DATE: 6/28/2007
DRAWN BY: BDJ
CHECKED BY: EBB

STAGE 1 PLAN - STD 701321 (SPECIAL)

F.A.P. RTE.	SECTION	COUNTY	TOTAL SHEETS	SHEET NO.
502	54BR-1	ADAMS	28	9
STA.		TO STA.		
FED. ROAD DIST. NO.	ILLINOIS	FED. AID PROJECT		



STAGE CONSTRUCTION SEQUENCE

THE FOLLOWING STAGE CONSTRUCTION SEQUENCE IS FOR INFORMATION ONLY. THE CONTRACTOR IS RESPONSIBLE FOR PLANNING AND EXECUTING THIS PROJECT WHICH SHALL BE SUBJECT TO THE APPROVAL OF THE ENGINEER.

PRELIMINARY STAGE:

REMOVE EXISTING BITUMINOUS SHOULDERS ALONG EAST SIDE OF IL 57. REPLACE WITH HOT-MIX ASPHALT BASE COURSE 10". UTILIZE TRAFFIC CONTROL AND PROTECTION STANDARD 701326. SET UP STAGE 1 TRAFFIC CONTROL.

STAGE 1:

PERFORM STAGE 1 STRUCTURE REMOVAL FOR STRUCTURE #001-0014. REMOVE EXISTING PAVEMENT FOR BRIDGE APPROACH PAVEMENT CONSTRUCTION.
 CONSTRUCT WEST SECTION OF STRUCTURE #001-0014. CONSTRUCT WEST SECTION OF BRIDGE APPROACH PAVEMENT. INSTALL STEEL PLATE BEAM GUARDRAIL ON WEST SIDE OF IL 57.
 REMOVE EXISTING BITUMINOUS SHOULDERS ALONG WEST SIDE OF IL 57. REPLACE WITH HOT MIX ASPHALT BASE COURSE 10".

STAGE 2:

RELOCATE TEMPORARY CONCRETE BARRIERS AND IMPACT ATTENUATORS FOR STAGE 2 TRAFFIC CONTROL. PERFORM STAGE 2 STRUCTURE REMOVAL FOR STRUCTURE #001-0014. REMOVE EXISTING PAVEMENT FOR BRIDGE APPROACH PAVEMENT CONSTRUCTION.
 CONSTRUCT EAST SECTION OF STRUCTURE #001-0014. CONSTRUCT EAST SECTION OF BRIDGE APPROACH PAVEMENT. INSTALL STEEL PLATE BEAM GUARDRAIL ON EAST SIDE OF IL 57.

STAGE 3:

REMOVE STAGE 2 TRAFFIC CONTROL ITEMS.
 CONSTRUCT BASE FOR ENTRANCES ON WEST SIDE OF IL 57. MILL AND RESURFACE IL 57. UTILIZE TRAFFIC CONTROL AND PROTECTION STANDARD 701306. INSTALL PAVEMENT MARKINGS.

GENERAL NOTES

VERTICAL PANELS, DRUMS WITH STEADY BURNING LIGHTS, TYPE III BARRICADES, SIGNS, TRAFFIC SIGNALS, MICROWAVE DETECTOR SYSTEMS, DETECTOR LOOPS, AND TYPE C BIDIRECTIONAL REFLECTORS SHALL BE INCLUDED IN THE COST OF THE PAY ITEM "TRAFFIC CONTROL AND PROTECTION, STANDARD 701321 (SPECIAL)".

THIS WORK SHALL SUPPLEMENT AND BE IN ACCORDANCE WITH HIGHWAY STANDARD 701321.

THE CONTRACTOR SHALL PLACE MAX WIDTH SIGNS BEFORE IMPLEMENTING ANY STAGE TRAFFIC CONTROL.

ENTRANCES AT STA 112+37.5 RT AND STA 115+90.4 RT SHALL BE CLOSED. ACCESS SHALL BE AVAILABLE THROUGH OTHER ENTRANCES ON THE PROPERTIES.

SEQUENCE OF OPERATIONS

PHASE	SEQUENCE OF OPERATIONS								
	A			B			C		
INTERVAL	1	2	3	4	5	6	7	8	9
NORTHBOUND IL 57	G	Y	R	R	R	R	R	R	R
SOUTHBOUND IL 57 / ENTRANCE STA 120+35 RT	R	R	R	G	Y	R	R	R	R
WESTBOUND 12TH STREET / ENTRANCE STA 116+47 RT	R	R	R	R	R	R	G	Y	R

REVISIONS	
NAME	DATE

ILLINOIS DEPARTMENT OF TRANSPORTATION
TRAFFIC CONTROL & PROTECTION
 FAP 502 (IL 57)
 SECTION 54BR-1
 ADAMS COUNTY

SCALE: VERT. 1"=50'
 HORIZ. 1"=50'
 DATE: 6/28/2007

DRAWN BY: SEB
 CHECKED BY: EBB

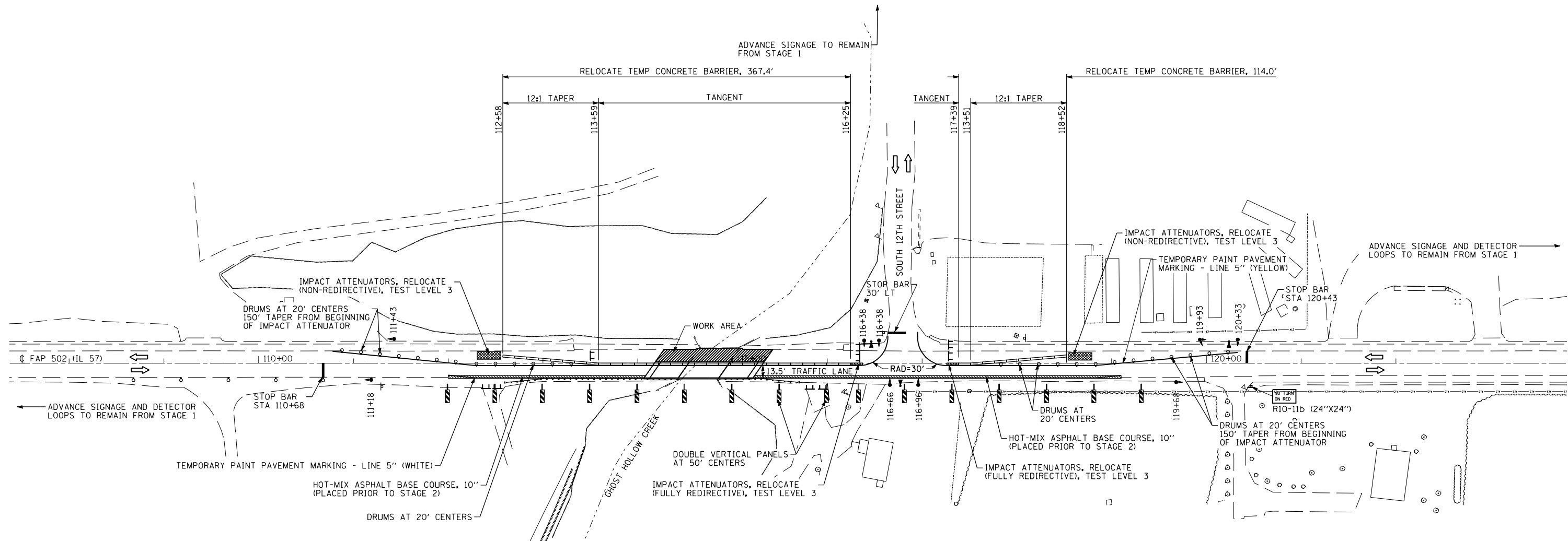
LEGEND

- ← DIRECTION OF TRAFFIC
- ⊥ TYPE III BARRICADE
- ▬ TEMPORARY CONCRETE BARRIER
- ▬ DOUBLE VERTICAL PANEL
- DRUM WITH BI-DIRECTIONAL STEADY BURNING LIGHT
- MICROWAVE DETECTOR SYSTEM
- TEMPORARY TRAFFIC SIGNAL
- ▨ TEMPORARY IMPACT ATTENUATOR
- ▨ WORK ZONE
- ▨ HOT-MIX ASPHALT BASE COURSE (WIDENING)

PLOT DATE = 7/2/2007
 PLOT SCALE = 1/8"=1'-0"
 PLOT FILE = I:\08\Proj\Ftrcontrl.dgn

F.A.P. RTE.	SECTION	COUNTY	TOTAL SHEETS	SHEET NO.
502	54BR-1	ADAMS	28	10
STA.		TO STA.		
FED. ROAD DIST. NO.	ILLINOIS	FED. AID PROJECT		

STAGE 2 PLAN - STD 701321 (SPECIAL)

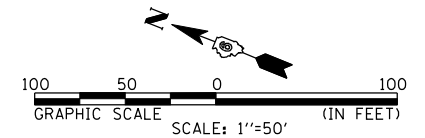


LEGEND

- ← DIRECTION OF TRAFFIC
- ⊥ TYPE III BARRICADE
- ▬ TEMPORARY CONCRETE BARRIER
- ▬ DOUBLE VERTICAL PANEL
- DRUM WITH BI-DIRECTIONAL STEADY BURNING LIGHT
- ⊣ MICROWAVE DETECTOR SYSTEM
- ⊣ TEMPORARY TRAFFIC SIGNAL
- ▨ TEMPORARY IMPACT ATTENUATOR
- ▨ WORK ZONE
- ▨ HOT-MIX ASPHALT BASE COURSE (WIDENING)

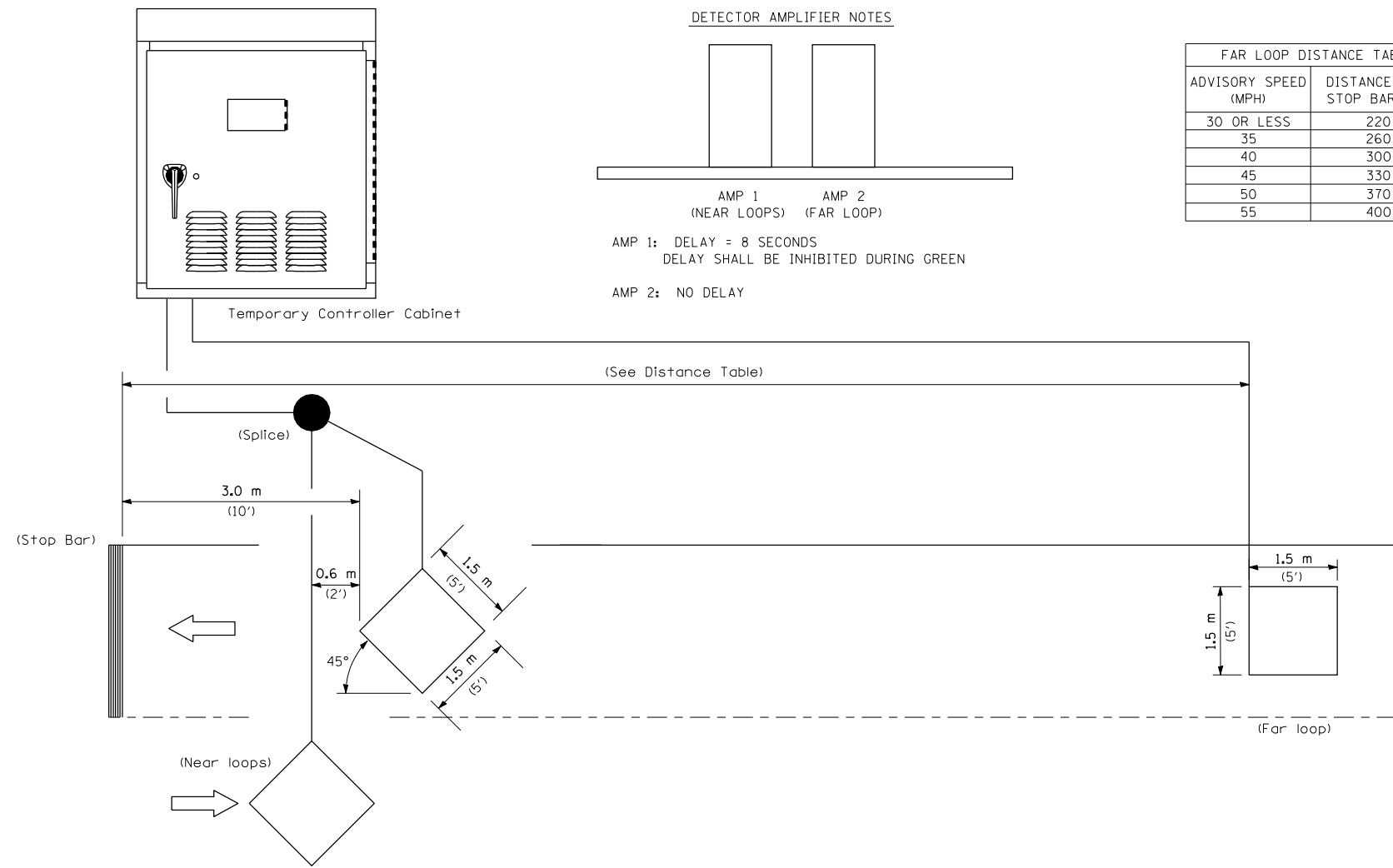
TRAFFIC CONTROL & PROTECTION QUANTITIES

ITEM	UNIT	QUANTITY	STAGE
TRAFFIC CONTROL AND PROTECTION, STANDARD 701306	L SUM	1	STAGE 3
TRAFFIC CONTROL AND PROTECTION, STANDARD 701326	L SUM	1	PRIOR TO STAGE 1
TRAFFIC CONTROL AND PROTECTION, STANDARD 701321 (SPECIAL)	EACH	1	STAGE 1 & 2
TRAFFIC CONTROL SURVEILLANCE	CAL DA	7	PRIOR TO STAGE 1
TEMPORARY BRIDGE TRAFFIC SIGNALS	EACH	10	STAGE 1 & 2
TEMPORARY PAINT PAVEMENT MARKING LINE 5"	FOOT	3342	STAGE 1 & 2
TEMPORARY PAINT PAVEMENT MARKING LINE 24"	FOOT	45	STAGE 1 & 2
TEMPORARY CONCRETE BARRIER	FOOT	481	STAGE 1
RELOCATE TEMPORARY CONCRETE BARRIER	FOOT	481	STAGE 2
IMPACT ATTENUATORS, TEMPORARY (NON- REDIRECTIVE), TEST LEVEL 3	EACH	2	STAGE 1
IMPACT ATTENUATORS, TEMPORARY (FULLY REDIRECTIVE, NARROW), TEST LEVEL 3	EACH	2	STAGE 1
IMPACT ATTENUATORS, RELOCATE (FULLY REDIRECTIVE), TEST LEVEL 3	EACH	2	STAGE 2
IMPACT ATTENUATORS, RELOCATE (NON- REDIRECTIVE), TEST LEVEL 3	EACH	2	STAGE 2
WIDTH RESTRICTION SIGNING	L SUM	1	STAGE 1 & 2



REVISIONS		ILLINOIS DEPARTMENT OF TRANSPORTATION	
NAME	DATE	TRAFFIC CONTROL & PROTECTION	
		FAP 502 (IL 57)	
		SECTION 54BR-1	
		ADAMS COUNTY	
		SCALE: VERT. 1"=50'	DRAWN BY SEB
		HORIZ. 1"=50'	CHECKED BY EBB
		DATE 6/28/2007	

F.A.P. RTE.	SECTION	COUNTY	TOTAL SHEETS	SHEET NO.
502	54BR-1	ADAMS	28	11
STA.		TO STA.		
FED. ROAD DIST. NO.	ILLINOIS	FED. AID PROJECT		



NOTE: All loops centered in lane.

INDUCTION LOOP DETECTOR

TEMPORARY BRIDGE TRAFFIC SIGNAL
LOOP PLACEMENT DETAIL SHEET

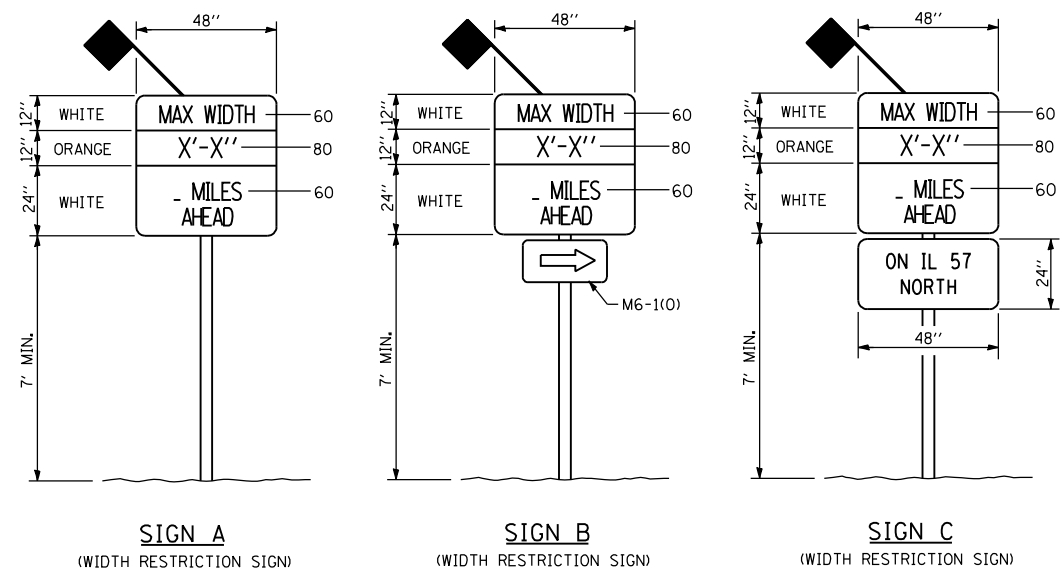
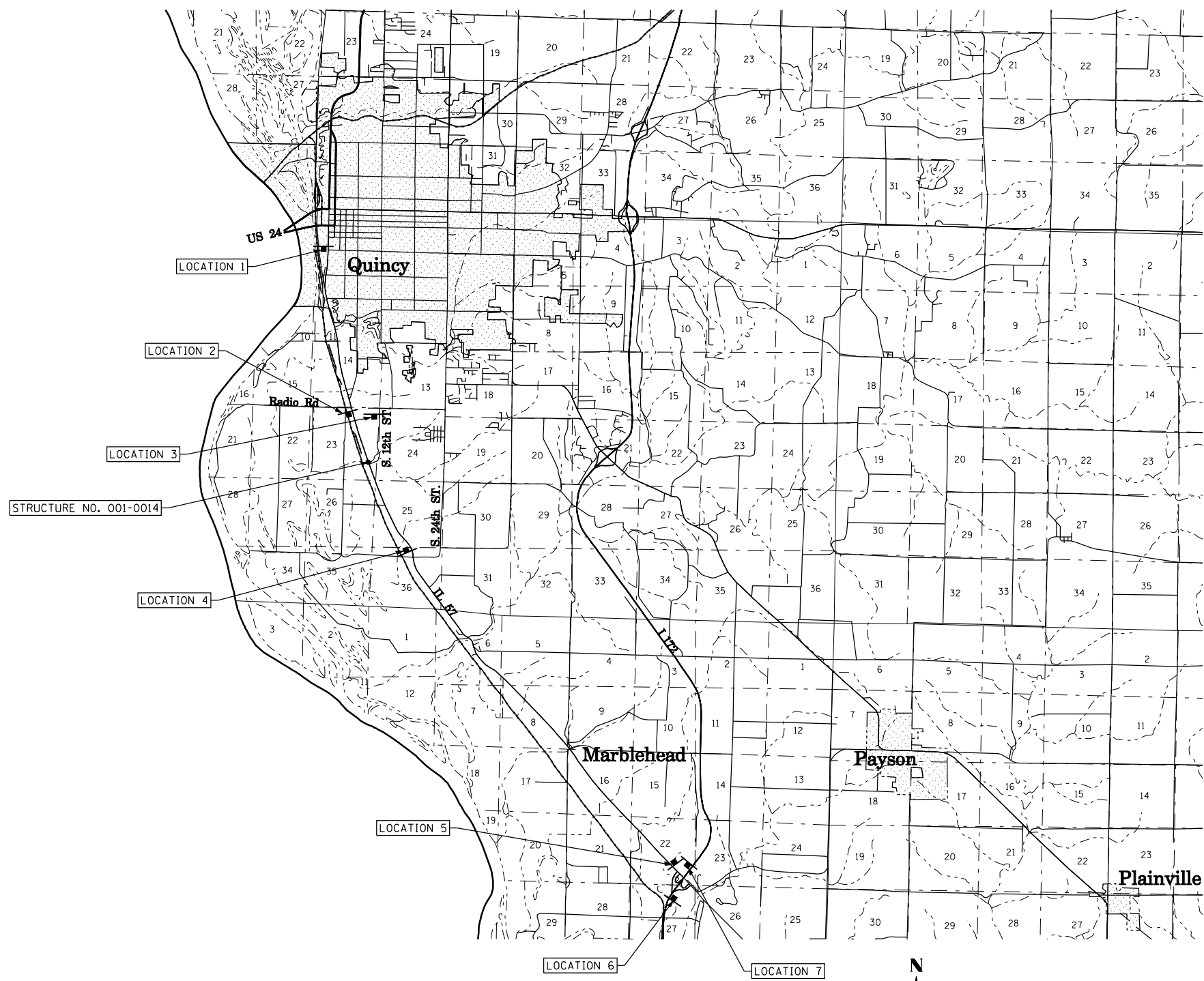
REVISIONS	
NAME	DATE

ILLINOIS DEPARTMENT OF TRANSPORTATION
TRAFFIC CONTROL & PROTECTION
FAP 502 (IL 57)
SECTION 54BR-1
ADAMS COUNTY

SCALE: VERT. NONE
HORIZ. NONE
DATE: 6/28/2007

DRAWN BY: DIST. 6
CHECKED BY: EBB

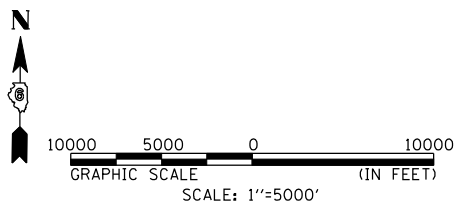
F.A.P. RTE.	SECTION	COUNTY	TOTAL SHEETS	SHEET NO.
502	54BR-1	ADAMS	28	12
STA.		TO STA.		
FED. ROAD DIST. NO.	ILLINOIS	FED. AID PROJECT		



LOCATION	SIGN	DISTANCE
1 IL 57 SB AT STATE ST	A	3.3 MILES
2 IL 57 SB SOUTH OF RADIO RD	A	0.8 MILES
3 SOUTH 12TH ST AT NIEDERS LN	B	0.9 MILES
4 IL 57 NB NORTH OF SOUTH 24TH ST	A	1.6 MILES
5 IL 57 NB NORTH OF I 172	A	7.9 MILES
6 I 172 NB SOUTH OF IL 57 INTERCHANGE	C	8.0 MILES
7 I 172 SB NORTH OF IL 57 INTERCHANGE	C	8.0 MILES

GENERAL NOTES:
 ACTUAL MAXIMUM WIDTH ARE TO BE MEASURED BY THE ENGINEER AFTER TEMPORARY CONCRETE BARRIER WALL IS PLACED FOR STAGE 1. WIDTH SHALL BE REMEASURED AND SIGNS UPDATED FOR STAGE 2.
 MAXIMUM WIDTH SIGNS SHALL BE PAID FOR AS ONE LUMP SUM ITEM AS "WIDTH RESTRICTION SIGNING".
 ALL SIGNS SHALL BE POST MOUNTED IN ACCORDANCE WITH ARTICLE 701.14 OF THE STANDARD SPECIFICATIONS FOR ROAD AND BRIDGE CONSTRUCTION.

PLOT DATE = 7/2/2007
 PLOT SCALE = 1/8"=5000'
 PLOT SCALE = 1/8"=5000'



MAXIMUM WIDTH SIGNING DETAILS

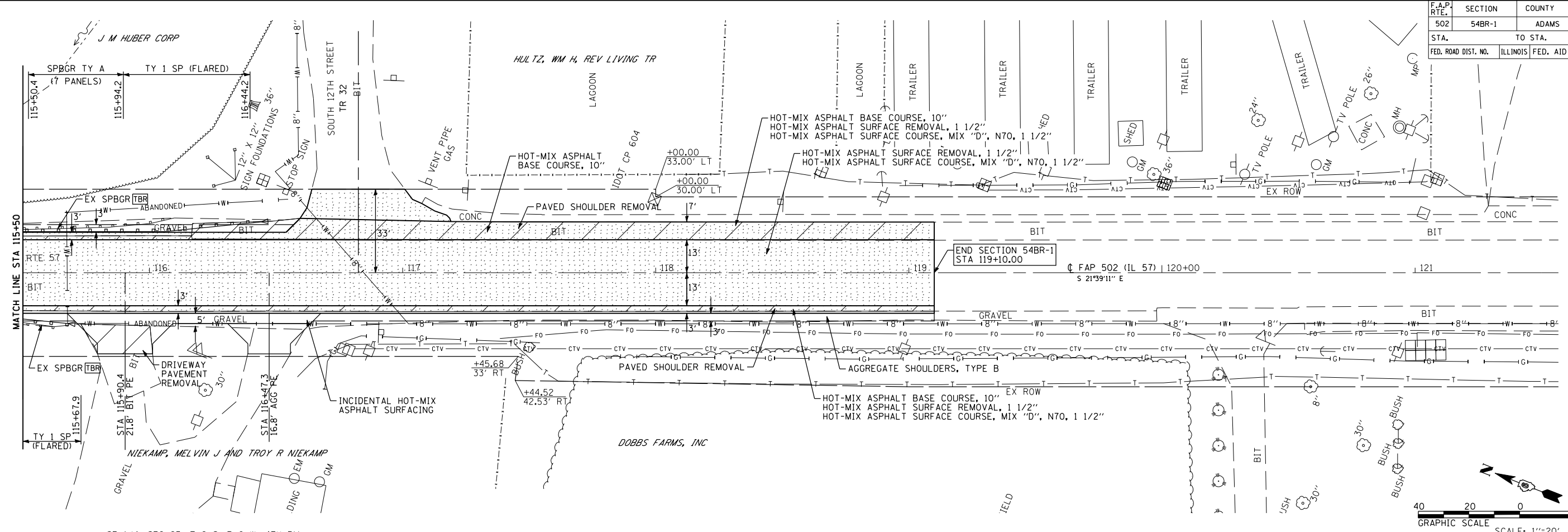
REVISIONS		ILLINOIS DEPARTMENT OF TRANSPORTATION	
NAME	DATE	TRAFFIC CONTROL & PROTECTION	
		FAP 502 (IL 57)	
		SECTION 54BR-1	
		ADAMS COUNTY	
		SCALE: VERT. 1"=5000'	DRAWN BY SEB
		HORIZ. 1"=5000'	CHECKED BY EBB
		DATE 6/28/2007	

F.A.P. RTE.	SECTION	COUNTY	TOTAL SHEETS	SHEET NO.
502	54BR-1	ADAMS	28	14
STA. 115+50.4		TO STA. 121+50		
FED. ROAD DIST. NO.		ILLINOIS FED. AID PROJECT		

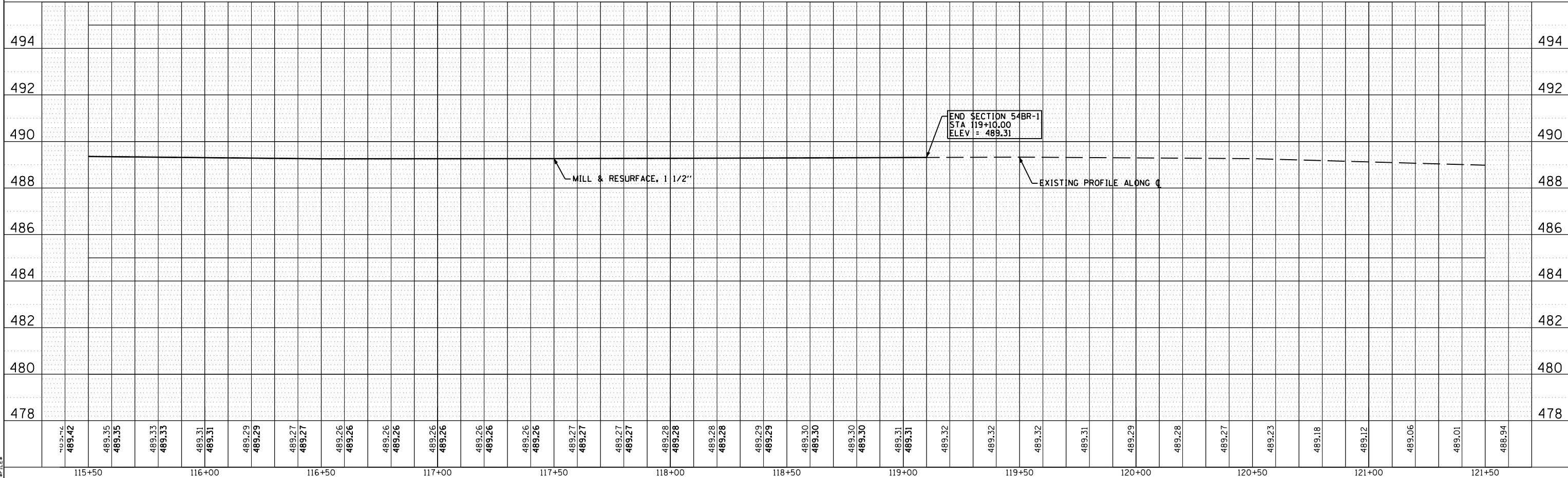
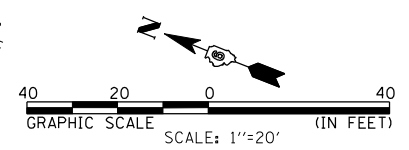
PLAN	DATE	BY
SURVEYED		
PLOTTED		
CHECKED		
NO. _____		

PROFILE	DATE	BY
SURVEYED		
PLOTTED		
CHECKED		
NO. _____		

PLOT DATE = 7/2/2007
 PLOT SCALE = 42.3529' / IN.
 PLOT FILE = 42.3529' / IN.
 PLOT SCALE = 42.3529' / IN.



SE 1/4, SEC 23, T 2 S, R 9 W, 4TH PM



END SECTION 54BR-1
 STA 119+10.00
 ELEV = 489.31

6/29/2007

P:\06Files\060245\02_W001_GhostHollow_Br_Plans\SN_001_0014.dgn

B.M. - Chisled square on northwest wingwall of S.N. 001-0014. Elevation 488.946

Existing Structure- S.N. 001-0014 was built in 1972 at Sta. 114+75 as FAP 36, Section PBI. The structure is a single span bridge consisting of eleven reinforced concrete deck beams, each 3' wide by 17" deep. The deck has a 5" minimum reinforced concrete wearing surface, constructed in 2003. The abutments are closed type and founded on untreated timber piles. The bk. to bk. abutments dimension measures 42'-10 1/2" while the O.-O. width measures 33'-0". The structure is skewed 35 degrees left ahead. The structure will be stage constructed.

No salvage

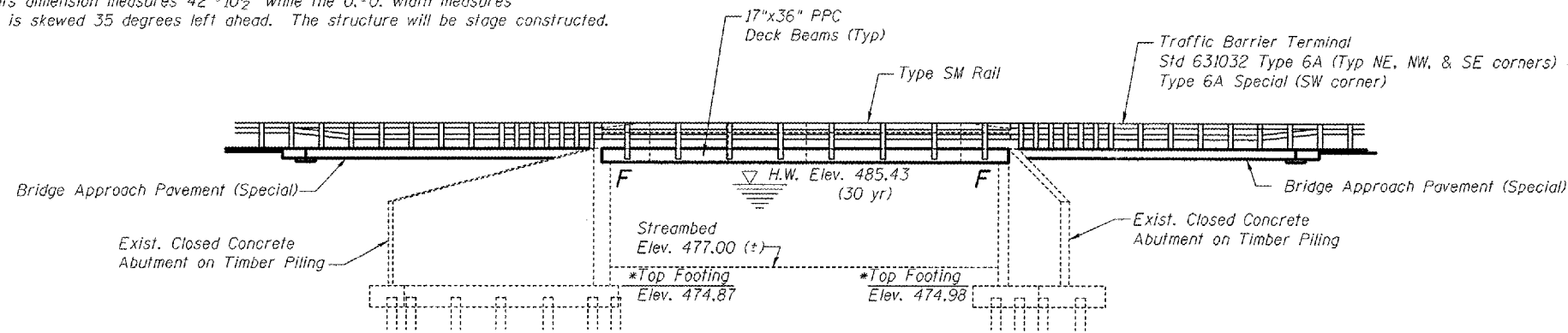
STATE OF ILLINOIS DEPARTMENT OF TRANSPORTATION

ROUTE NO.	SECTION	COUNTY	TOTAL SHEETS	SHEET NO.
F.A.P. 502	54BR-1	ADAMS	28	15
FED. ROAD DIST. NO. 7	ILLINOIS	FED. AID PROJECT		

Contract #72873

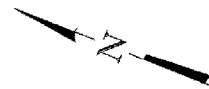
INDEX OF SHEETS

1. General Plan & Elevation
2. General Notes and Details
3. Stage Construction Details
4. Superstructure
5. Superstructure Details
6. Steel Railing, Type SM
7. Bar Splicer Assembly Details
8. Temporary Concrete Barrier for Stage Construction
9. Abutment Repair Details



* Elevations from existing plans

ELEVATION



SCOPE OF WORK

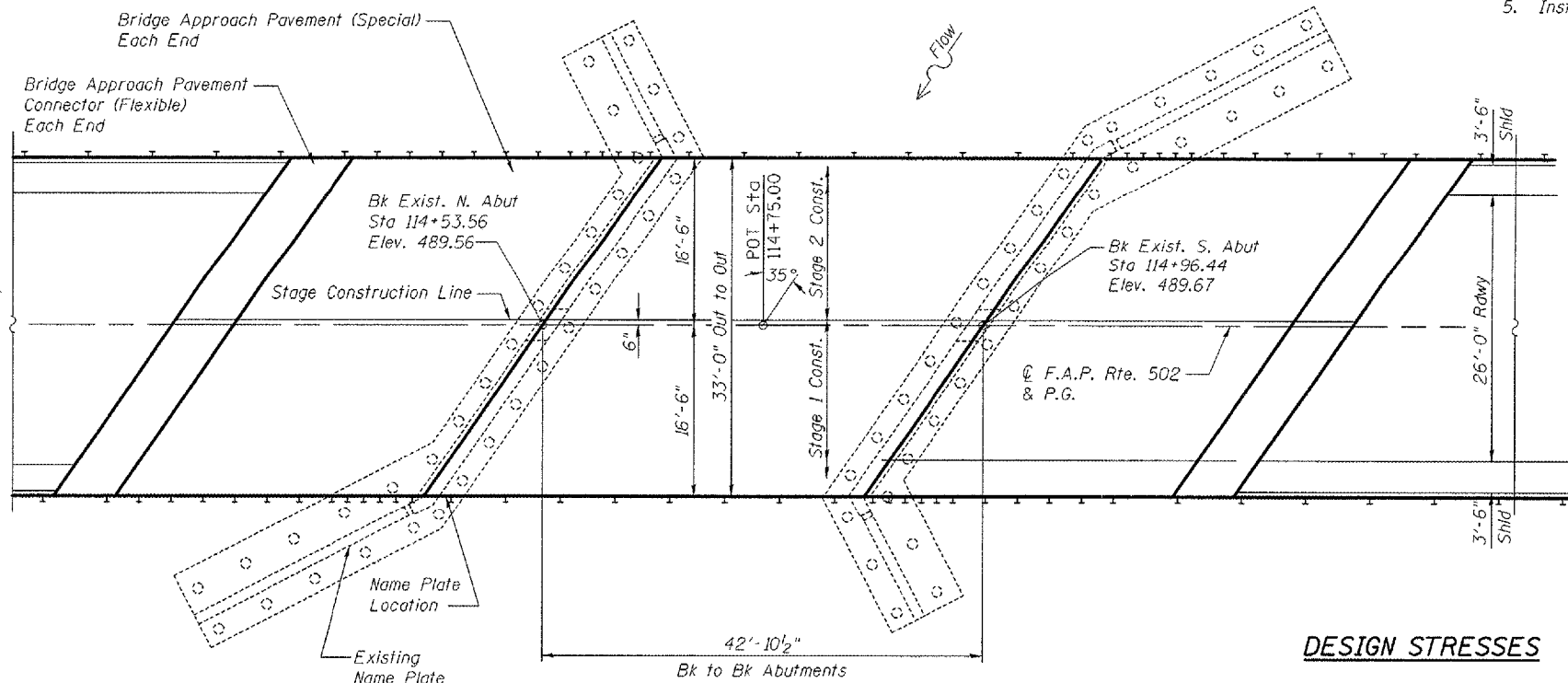
1. Remove existing 5" concrete wearing surface, 17" deck beams, and steel railing.
2. Repair abutments and wingwalls.
3. Install new deck beams.
4. Place new concrete wearing surface.
5. Install new bridge rail.

STATION 114+75
REBUILT 200_ BY
STATE OF ILLINOIS
FAP RTE 502 - SEC 54BR-1
LOADING HS20
STRUCTURE NO. 001-0014

NAME PLATE

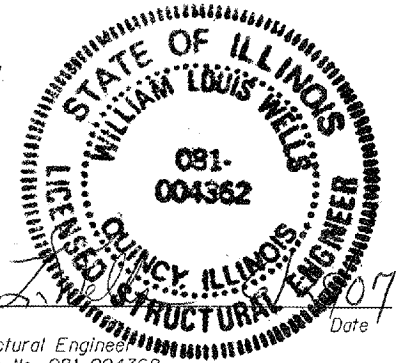
See Std. 515001

Existing Name Plate shall be cleaned and relocated adjacent to new Name Plate. Cost included with Name Plates.

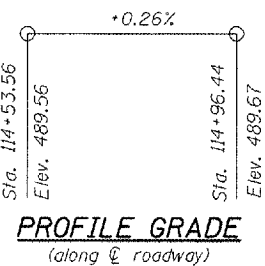


APPROVED For Structural Adequacy Only

Ralph E Anderson Engineer of Bridges & Structures



William L. Wells Licensed Structural Engineer State of Illinois No. 081-004362 License Expires 11/30/08



PROFILE GRADE (along roadway)

DESIGNED - WLW
CHECKED - ADL
DRAWN - BGJ
CHECKED - ADL

PLAN

DESIGN SPECIFICATIONS

2002 AASHTO Standard Specifications - 17th ed.

LOADING HS20-44

Allow 50#/sq. ft. for future wearing surface.

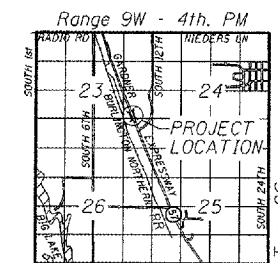
DESIGN STRESSES

FIELD UNITS

- $f'_c = 3,500$ psi
- $f'_ci = 5,000$ psi (Concrete Wearing Surface)
- $f_y = 60,000$ psi (Reinforcement)
- $f_y = 50,000$ psi (Structural)

PRECAST PRESTRESSED UNITS

- $f'_c = 5,000$ psi
- $f'_ci = 4,000$ psi
- $f'_s = 270,000$ psi (1/2" ϕ low lax. strands)
- $f'_{si} = 201,960$ psi (1/2" ϕ low lax. strands)



LOCATION SKETCH

GENERAL PLAN & ELEVATION
F.A.P 502 ROUTE IL 57 SEC. 54BR-1
ADAMS COUNTY
STATION 114+75.00
STRUCTURE NO. 001-0014

STATE OF ILLINOIS
DEPARTMENT OF TRANSPORTATION

ROUTE NO.	SECTION	COUNTY	SHEETS	SHEET	SHEET NO.
F.A.P. 502	54BR-1	ADAMS	28	16	9 SHEETS
FED. ROAD DIST. NO. 7	ILLINOIS	FED. AID PROJECT			

Contract #72873

GENERAL NOTES

The cut strands at each beam end shall be given two coats of zinc dust spray or paint meeting the requirements of ASTM A 780. The zinc dust spray or paint shall be applied before corrosion appears and allowed to dry according to the manufacturer's specifications prior to another coat of zinc. A concrete sealer meeting the requirements of Section 587 of the Standard Specifications shall be applied to the exterior face and 9" in on the underside of the fascia beams. This work shall be performed by the producer and included with the cost of the beam.

Repair of abutments shall be completed prior to placement of new deck beams. The minimum thickness of the Concrete overlay shall be 5" and varies as required to adjust for the new profile grade and beam camber.

The contractor is advised that the existing PPC Deck Beams are in deteriorated condition with reduced load carrying capacity. It is the contractor's responsibility to account for the condition of the beams when developing construction procedures for removal and replacement of the superstructure.

If the contractor's procedure for existing beam removal or placement of new beams involves placement of cranes or other heavy equipment on the new beams, a detailed procedure shall be submitted to the Engineer for approval. The procedure shall include calculations, prepared and sealed by an Illinois Licensed Structural Engineer, verifying that the equipment and procedures used will not overstress the new beams. To distribute load to multiple beams and protect the concrete, in all cases a double layer mat of heavy timbers shall be used at all times under crane tracks or wheels and any outriggers in the down position. If necessary, shims shall be used under the crane mat to ensure uniform contact with the underlying beams. Prior to placement of the timber mats the following shall be done: placement and tightening of transverse tie assemblies, grouting and curing the dowel rods 24 hours minimum and grouting and curing the shear keys. A temporary means of lateral restraint will be required for fascia beams at expansion ends of the beams to prevent movement of the beams.

The rail anchorage shall be cast with the beam and the wearing surface shall be cast in the field. Formwork necessary for the wearing surface may be secured utilizing the bottom rail anchorage inserts and/or additional inserts cast into the beam. Drilling into the beam will not be permitted.

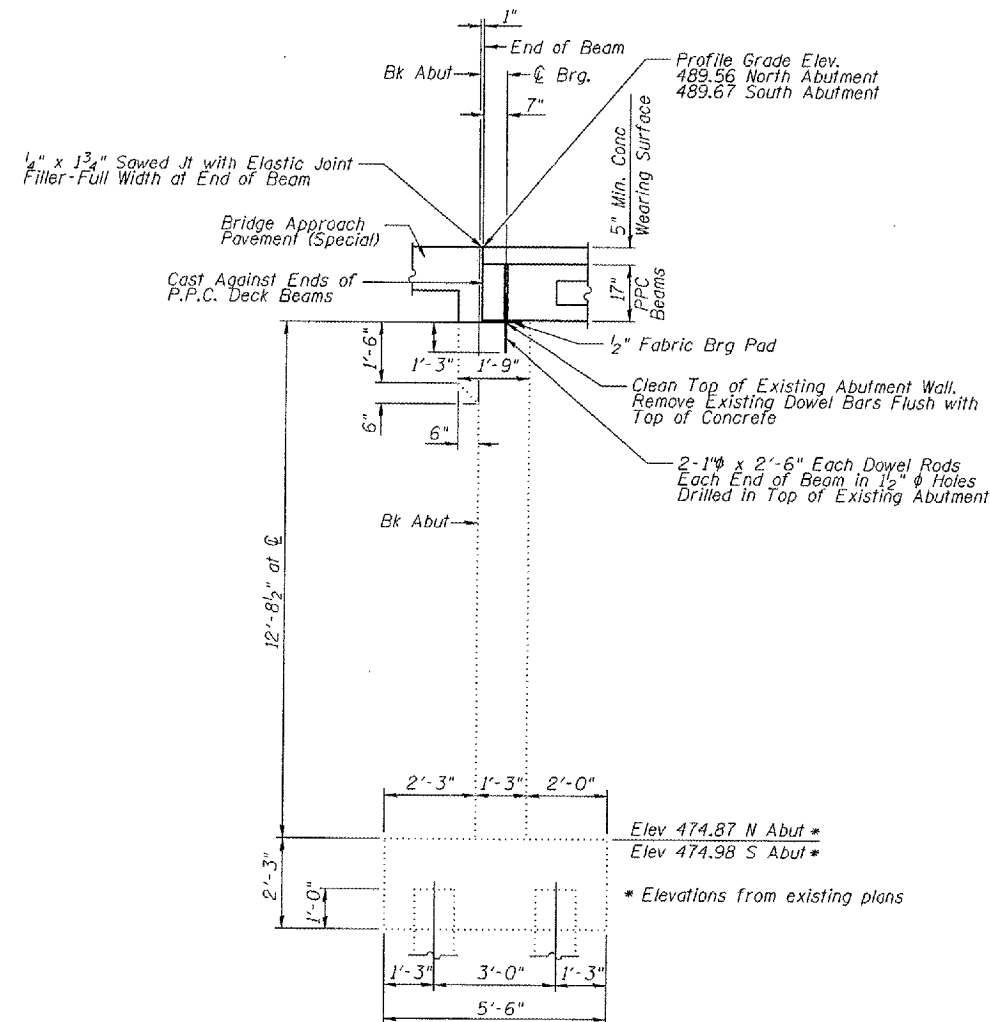
Reinforcement bars shall conform to the requirements of ASTM A706 Grade 60 (IL Modified). See Special Provisions.

Plan dimensions and details relative to existing structure have been taken from existing plans and field surveys and are subject to nominal construction variations. It shall be the Contractor's responsibility to verify such dimensions and details in the field and make necessary approved adjustments prior to construction or ordering of materials. Such variations shall not be cause for additional compensation for a change in the scope of the work, however, the Contractor will be paid for the quantity actually furnished at the unit price for the work.

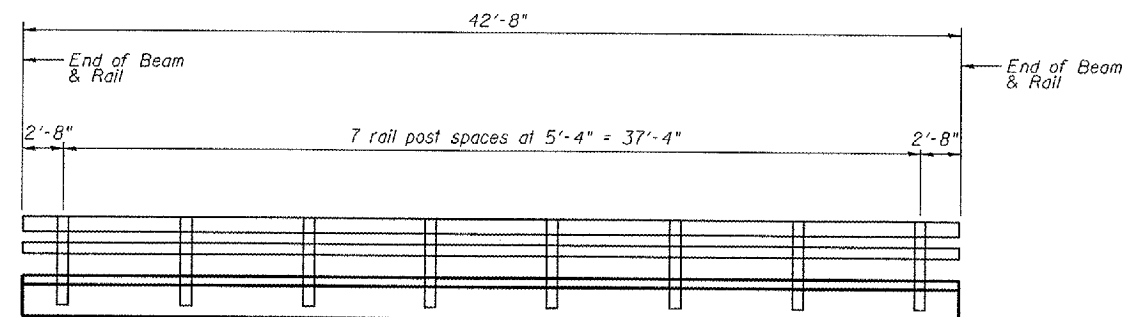
All construction joints shall be bonded.
Reinforcement bars designated (E) shall be epoxy coated.

TOTAL BILL OF MATERIAL

Item	Unit	Total
Removal of Existing Superstructures	Each	1
Concrete Wearing Surface, 5"	Sq. Yd.	157
Precast Prestressed Concrete Deck Beams (17" Depth)	Sq. Ft.	1408
Reinforcement Bars, Epoxy Coated	Pound	2015
Bridge Deck Grooving	Sq. Yd.	157
Protective Coat	Sq. Yd.	157
Steel Bridge Rail, Type SM	Foot	86
Name Plates	Each	1
Bar Splicers	Each	44
Temporary Support System	L Sum	1
Asbestos Bearing Pad Removal	Each	24
Structural Repair of Concrete (Depth Equal To or Less Than 5 Inches)	Sq. ft.	50



SECTION THRU ABUTMENT
At Rt L's to C Abutment



RAIL POST SPACING

DESIGNED - WLW
CHECKED - ADL
DRAWN - BGJ
CHECKED - ADL

GENERAL NOTES AND DETAILS
F.A.P 502 ROUTE IL 57 SEC. 54BR-1
ADAMS COUNTY
STATION 114+75.00
STRUCTURE NO. 001-0014

7/21/2007

\$FILE\$

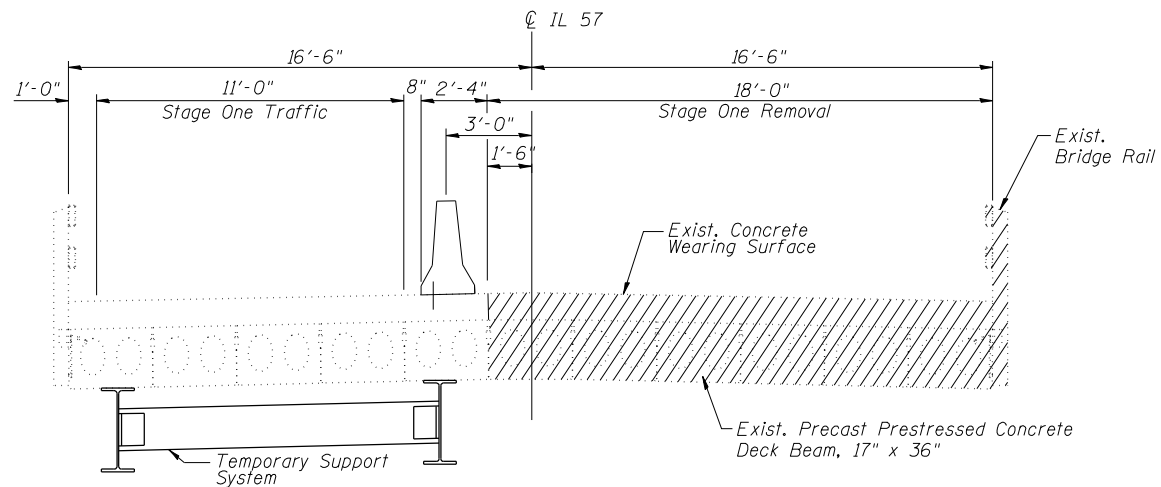
STATE OF ILLINOIS
DEPARTMENT OF TRANSPORTATION

ROUTE NO.	SECTION	COUNTY	TOTAL SHEETS	SHEET NO.
F.A.P. 502	54BR-1	ADAMS	28	17
FED. ROAD DIST. NO. 7		ILLINOIS	FED. AID PROJECT	

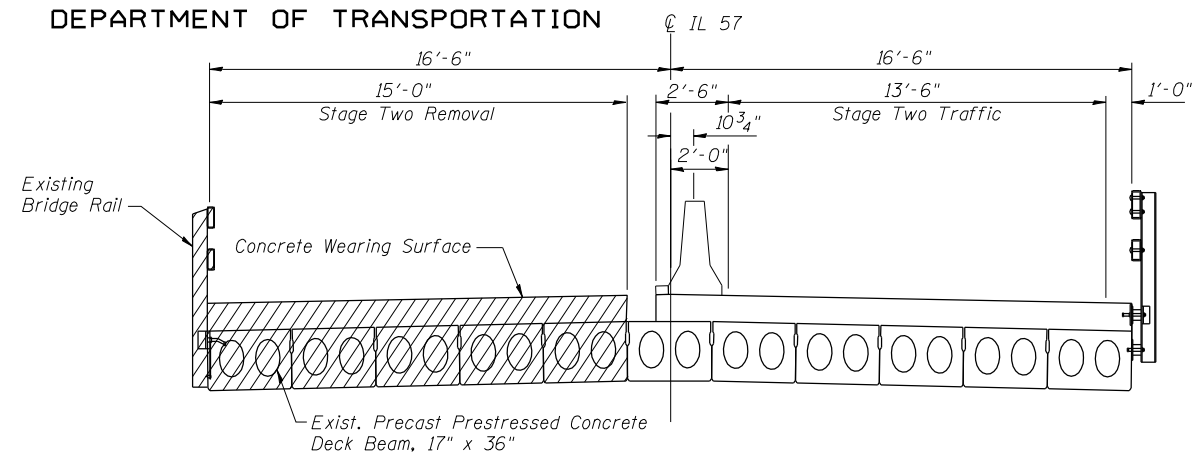
SHEET NO. 3
9 SHEETS

Contract #72873

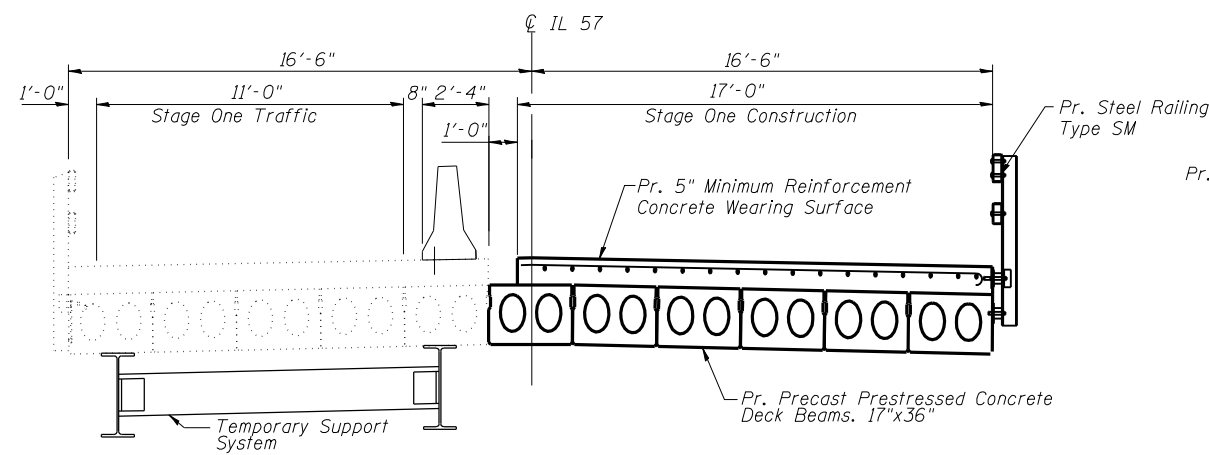
7/2/2007



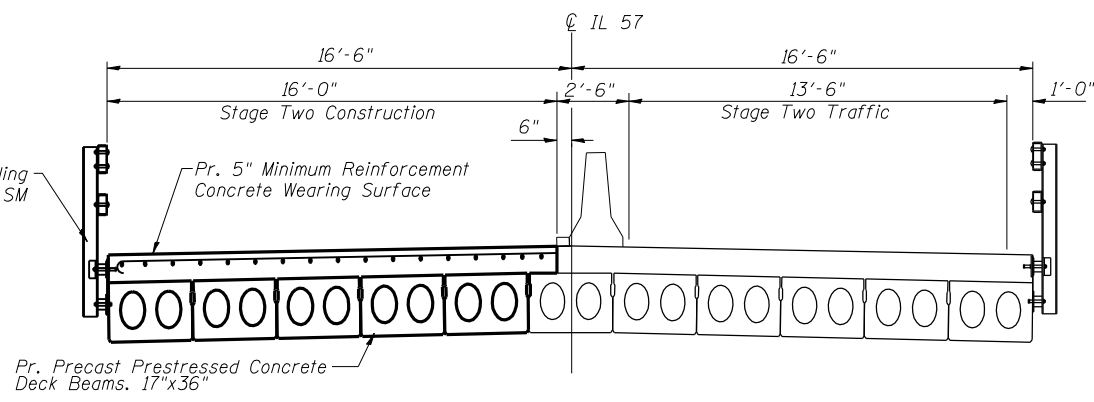
CROSS SECTION - STAGE 1 REMOVAL
(Looking South)



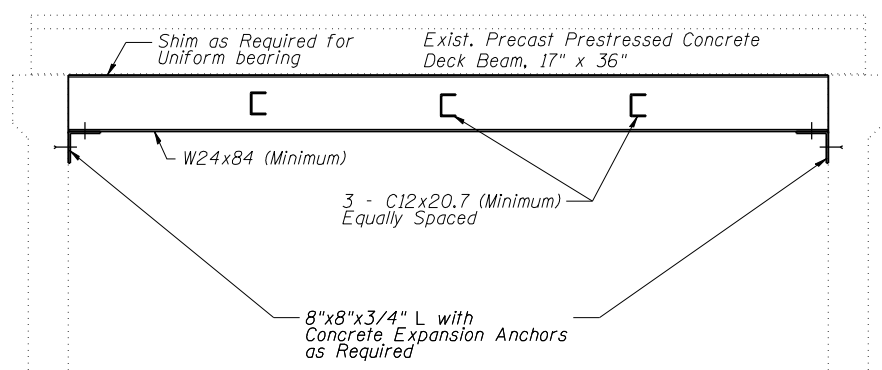
CROSS SECTION - STAGE 2 REMOVAL
(Looking South)



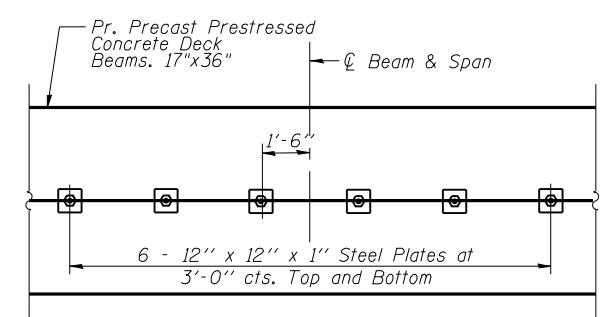
CROSS SECTION - STAGE 1 CONSTRUCTION
(Looking South)



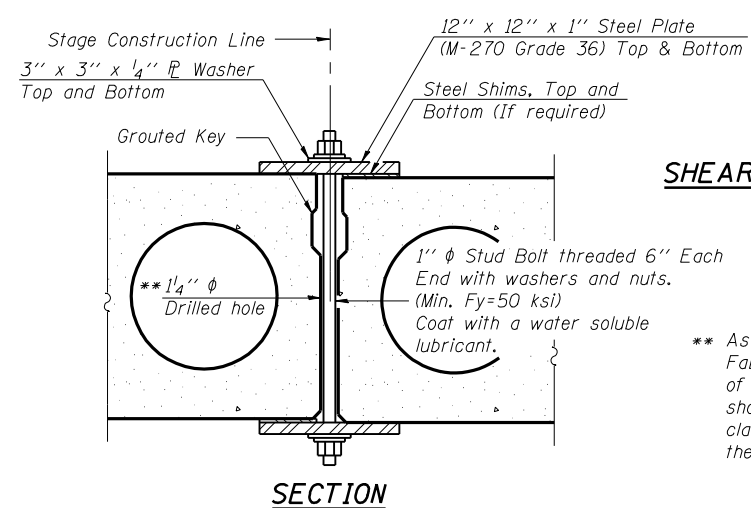
CROSS SECTION - STAGE 2 CONSTRUCTION
(Looking South)



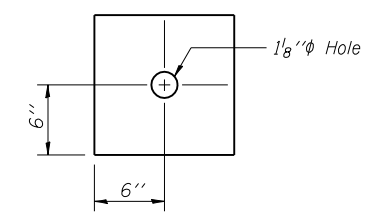
TEMPORARY SUPPORT SYSTEM



PLAN



SECTION



CLAMPING PLATE

SHEAR KEY CLAMPING DETAILS AT STAGE CONST. JT.

Cost included with Precast Prestressed Concrete Deck Beams.
See Stage Construction Details for traffic lanes.
Clamping device to be removed after all shear keys are grouted.

** As an alternate to the drilled holes, the Contractor may request the Fabricator to cast 2" diameter semi-circular recesses in the sides of each beam adjacent to the stage construction line. These recesses should align to form a hole at the appropriate locations for the clamping device bolts. If the Contractor elects to use this alternate, the details shall be identified on the shop drawings.

NOTES:

Hatch areas indicate "Removal of Existing Superstructure".
Removal of existing steel railing, concrete wearing surface, and deck beams, are included with "Removal of Existing Superstructure".
See roadway plans for quantity and location of temporary concrete barrier.
All dimensions given for existing structure are approximate.

DESIGNED - WLW
CHECKED - ADL
DRAWN - RLW
CHECKED - ADL

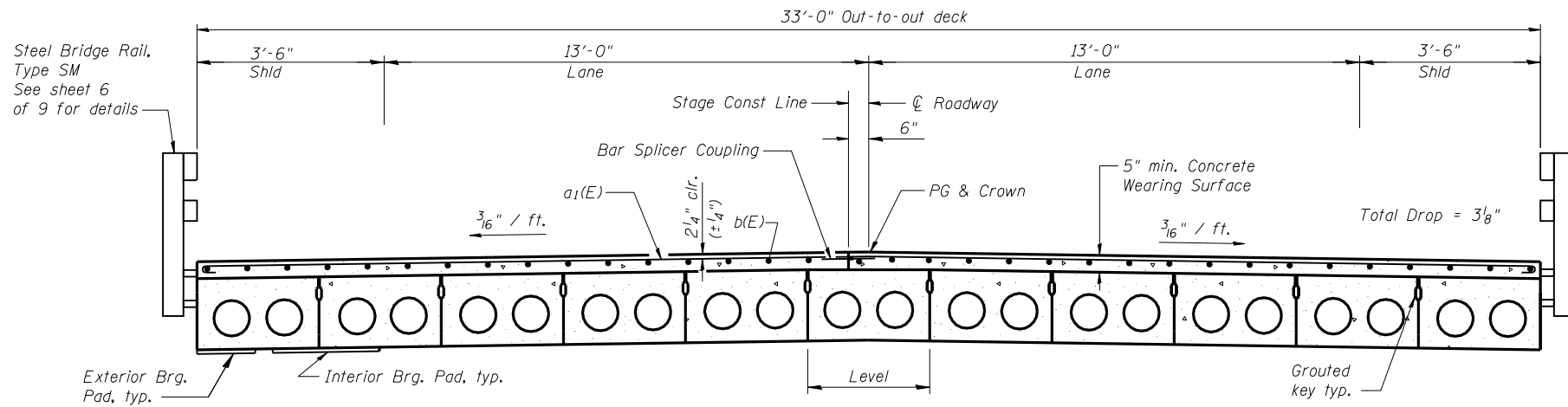
STAGE CONSTRUCTION DETAILS
F.A.P 502 ROUTE IL 57 SEC. 54BR-1
ADAMS COUNTY
STATION 114+75.00
STRUCTURE NO. 001-0014

STATE OF ILLINOIS
DEPARTMENT OF TRANSPORTATION

ROUTE NO.	SECTION	COUNTY	TOTAL SHEETS	SHEET NO.
F.A.P. 502	54BR-1	ADAMS	28	18
FED. ROAD DIST. NO. 7	ILLINOIS	FED. AID PROJECT		

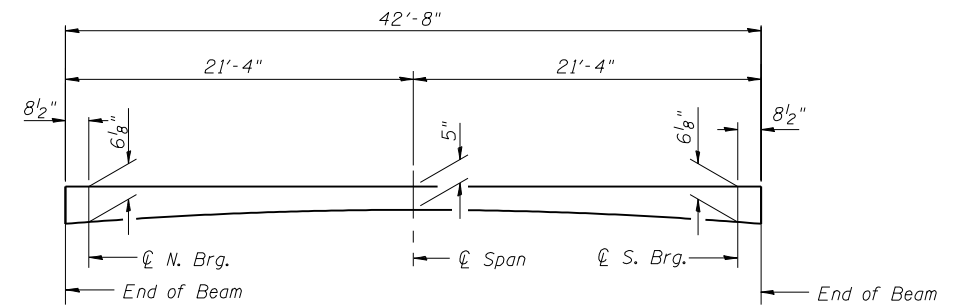
SHEET NO. 4
9 SHEETS

Contract #72873



11 - 17" x 36" Precast Prestressed Concrete Deck Beams = 33'-0"

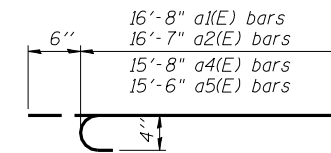
CROSS SECTION



REINFORCED CONCRETE WEARING SURFACE PROFILE @ EDGE OF DECK

Note:

The depth of Concrete Wearing Surface at ϕ of roadway over level deck beam is $5/16$ " higher.



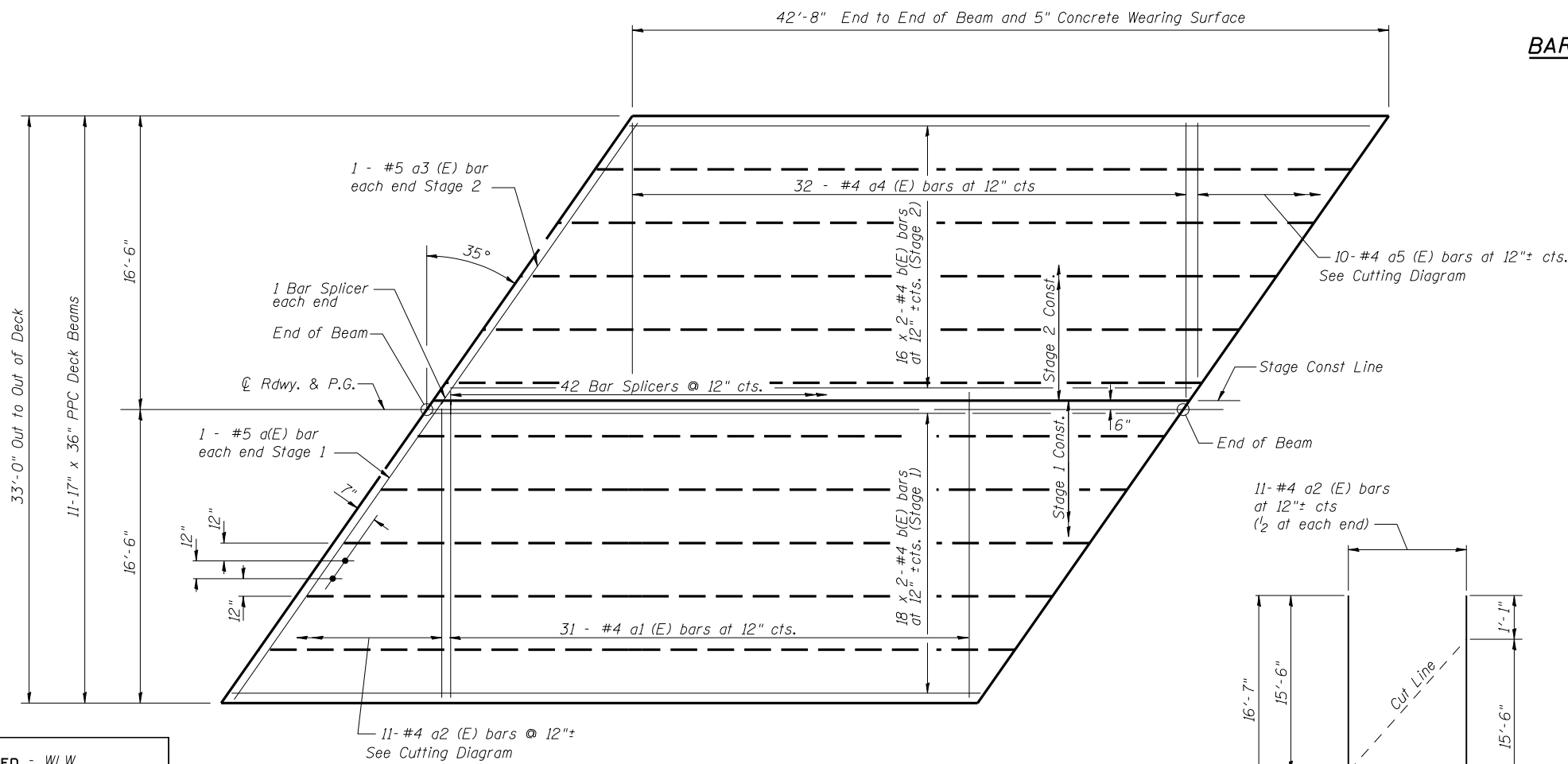
BAR a1 (E), a2(E), a4(E), & a5 (E)

**SUPERSTRUCTURE
BILL OF MATERIAL**

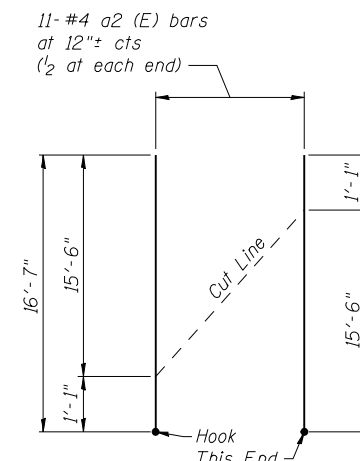
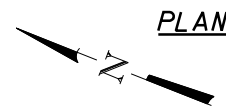
Bar	No.	Size	Length	Shape
a(E)	2	#5	20'-4"	—
a1(E)	31	#4	17'-2"	C
a2(E)	11	#4	17'-1"	C
a3(E)	2	#5	19'-1"	—
a4(E)	32	#4	16'-2"	C
a5(E)	10	#4	16'-0"	C
b(E)	68	#4	22'-0"	—
Reinforcement Bars, Epoxy Coated			Pound	2015
Concrete Wearing Surface, 5"			Sq. Yd.	157
Bar Splicers			Each	44

Notes:

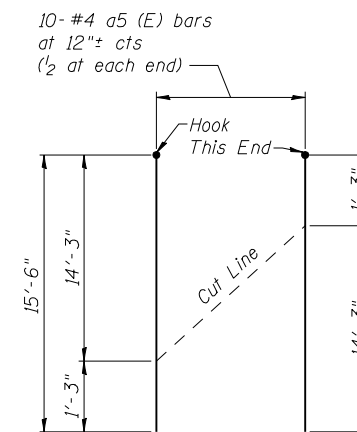
Bars indicated thus 32 x 2-#4 etc. indicates 32 lines of bars with 2 lengths per line. After beams have been erected, holes shall be drilled into substructure and anchor dowels placed. Dowel holes shall be filled with non-shrink grout to top of beam and allowed to cure min 24 hrs. prior to grouting the shear keys. Dowel rods are included in the cost of Precast Prestressed Concrete Deck Beams (17" Depth). Longitudinal keys shall be grouted. Minimum Bar Lap #4 Bar = 1'-8"



DESIGNED - WLW
CHECKED - ADL
DRAWN - BGJ
CHECKED - ADL



a2 (E) Cutting Diagram



a5 (E) Cutting Diagram

SUPERSTRUCTURE
F.A.P 502 ROUTE IL 57 SEC. 54BR-1
ADAMS COUNTY
STATION 114+75.00
STRUCTURE NO. 001-0014

7/2/2007

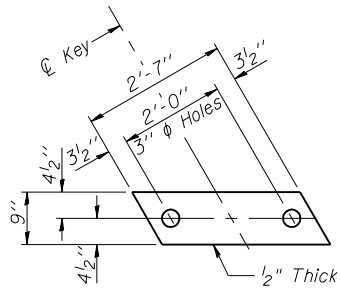
\$FILE\$

STATE OF ILLINOIS
DEPARTMENT OF TRANSPORTATION

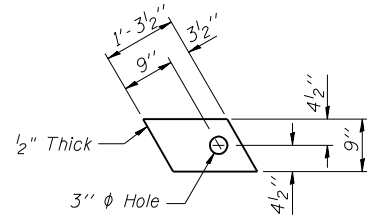
ROUTE NO.	SECTION	COUNTY	TOTAL SHEETS	SHEET NO.
F.A.P. 502	54BR-1	ADAMS	28	19
FED. ROAD DIST. NO. 7		ILLINOIS	FED. AID PROJECT	

Contract #72873

SHEET NO. 5
9 SHEETS

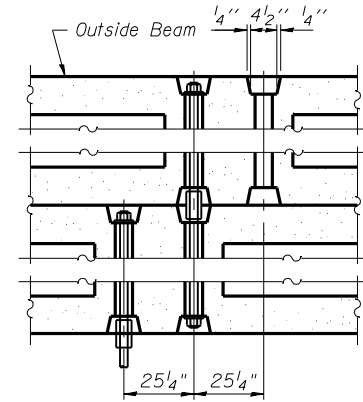


FABRIC BEARING PAD
(Interior)

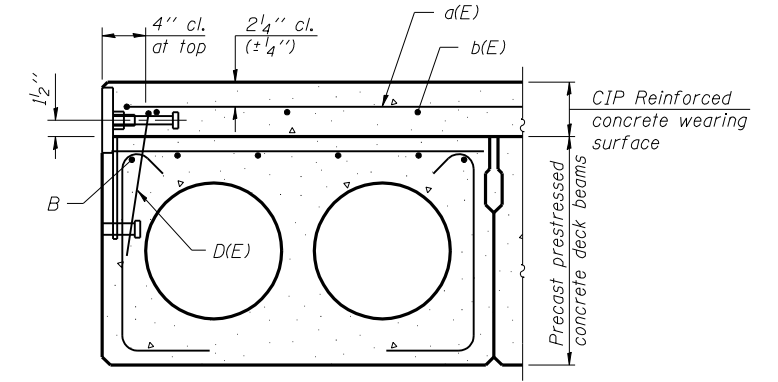
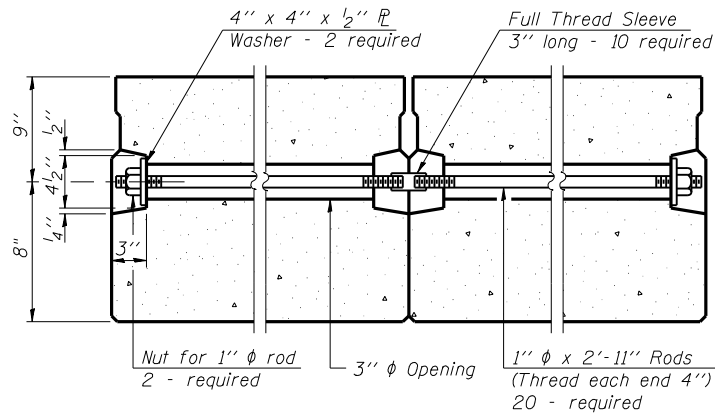


FABRIC BEARING PAD
(Exterior and Stage Const.)

FIXED

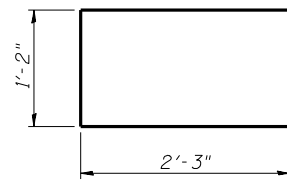


TYPICAL TRANSVERSE TIE ASSEMBLY

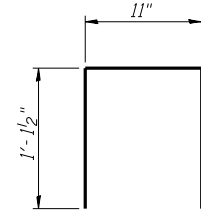


SECTION THRU EXTERIOR BEAMS

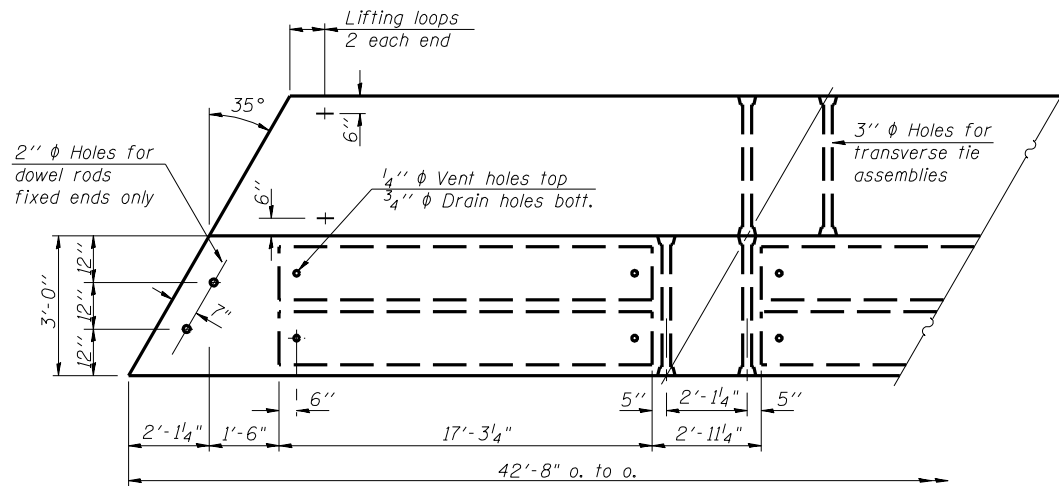
See Typical Section for strand pattern, dimensions and bar call outs.



BAR U1

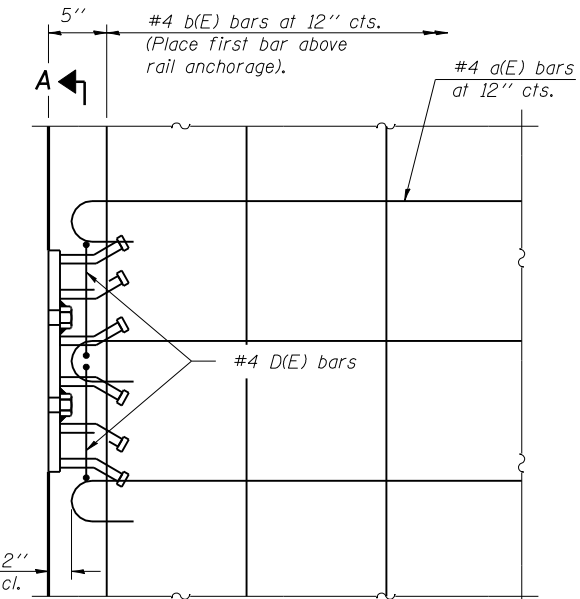
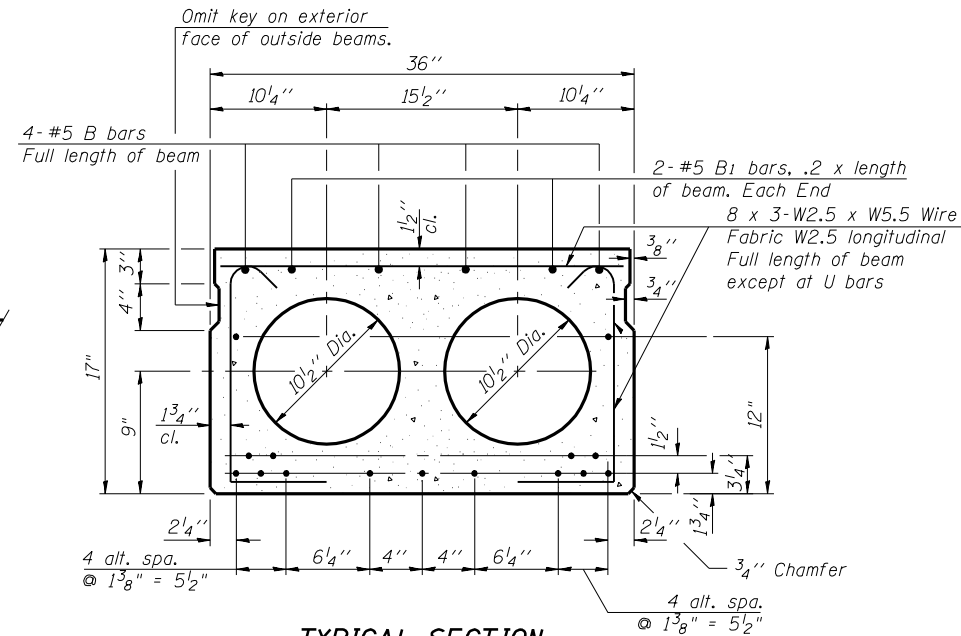


BAR D(E)

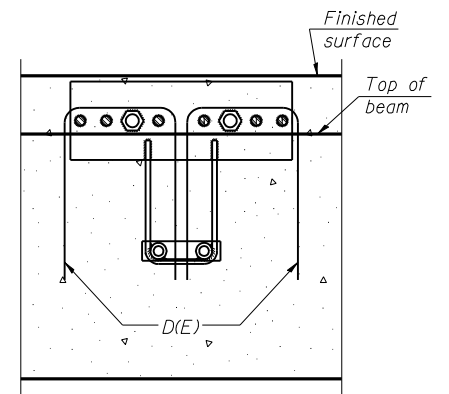


TYPICAL SECTION

1/2" ϕ Strands, Each Strand Stressed to 30,900 Lbs.
9-Strands 1 3/4" up, 4-Strands 3/4" up, 2-Strands 12" up



PLAN



SECTION A-A

Notes:

The rail anchorage shall be cast with the beam and the wearing surface shall be cast in the field. Formwork necessary for the wearing surface may be secured utilizing the bottom rail anchorage inserts and/or additional inserts cast into the beam. Drilling into the beam will not be permitted.

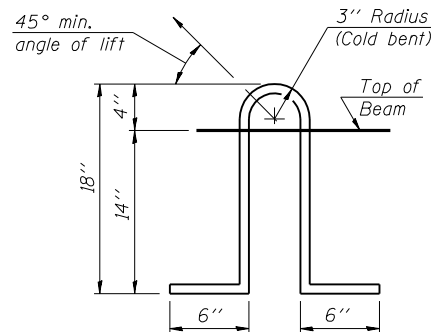
NOTES

Prestressing steel shall be uncoated high strength, low relaxation 7-wire strand, Grade 270. The nominal diameter shall be 1/2" and the nominal cross-sectional area shall be 0.153 sq. in. Lifting loops shall be 2 - 1/2" ϕ - 270 ksi strands, as shown. Non prestressing steel shall conform to ASTM A 706 (IL MOD), Grade 60. The bearing seat surfaces shall be adjusted by shimming to assure firm and even bearing. Two 1/8" fabric adjusting shims of the dimensions of the Exterior Bearing Pad shall be provided for each bearing. Keyway surfaces shall be cleaned to remove form oil or other bond breaking material prior to shipment of the beams. Cleaning shall be done by sandblasting the keyway areas between top of the beam and the bottom edge of the key. Corrosion Inhibitor, per Article 1020.05(b)(12) of the Standard Specifications, shall be used in the concrete for precast prestressed concrete deck beams. Required Release Strength, f'ci, shall be 4000 p.s.i. See sheet 6 of 7 for location of rail inserts.

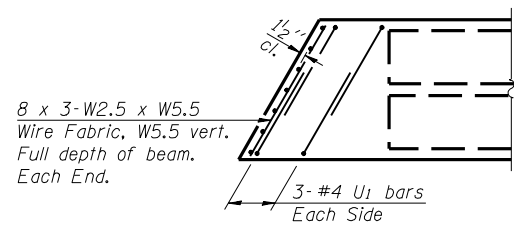
BILL OF MATERIAL

Precast Prestressed Concrete Deck Beams (17" Depth)	Sq. Ft.	1,408
---	---------	-------

SUPERSTRUCTURE DETAILS
F.A.P 502 ROUTE IL 57 SEC. 54BR-1
ADAMS COUNTY
STATION 114+75.00
STRUCTURE NO. 001-0014



LIFTING LOOP DETAIL



END PLAN

PLAN

DESIGNED - WLW
CHECKED - ADL
DRAWN - BGJ
CHECKED - ADL

PD-3-L 11-1-06

7/2/2007

\$FILE\$

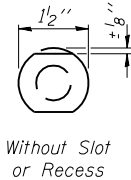
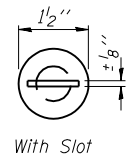
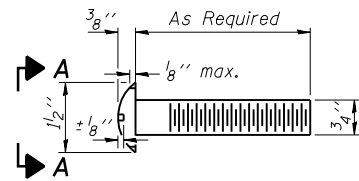
STATE OF ILLINOIS
DEPARTMENT OF TRANSPORTATION

ROUTE NO.	SECTION	COUNTY	TOTAL SHEETS	SHEET NO.
F.A.P. 502	54BR-1	ADAMS	28	20
FED. ROAD DIST. NO. 7		ILLINOIS	FED. AID PROJECT	

SHEET NO. 6
9 SHEETS

Contract #72873

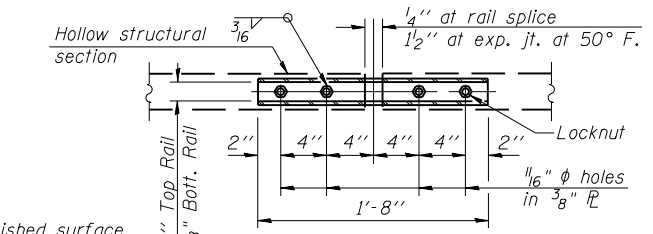
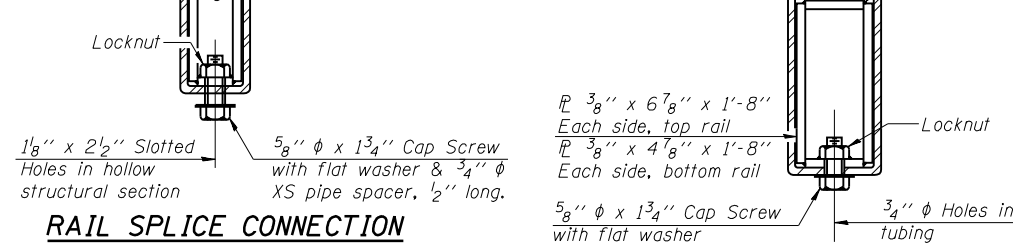
DETAIL OF 3/4" φ ROUND HEAD BOLT



VIEW A-A

4-3/4" φ x 6" Round Head Bolts
(With slot or approved recess in head) with locknut & flat washer.
7/8" φ holes in hollow structural section may be drilled in the field.

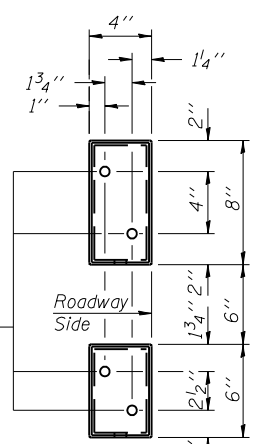
RAIL SPLICE CONNECTION
AT EXPANSION JT.



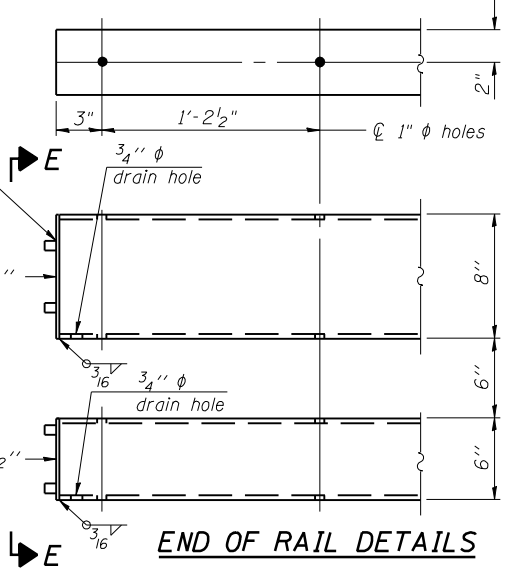
PLAN-BOTT. SPLICE P
TYPICAL

φ - 5/8" reduced base welded studs. Provide 4 - 5/8" washers and self-locking nuts or nuts and jam nuts for guardrail connection shown on Std. 631032

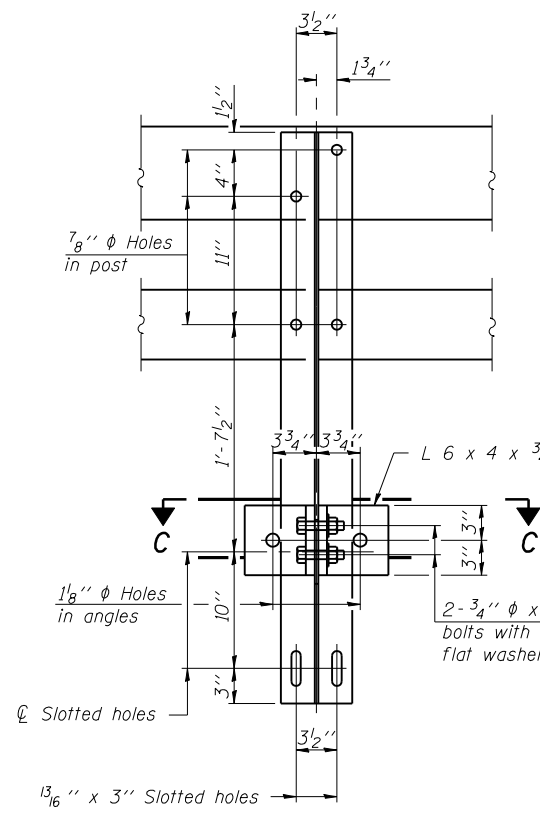
SECTION AT
RAIL SPLICE



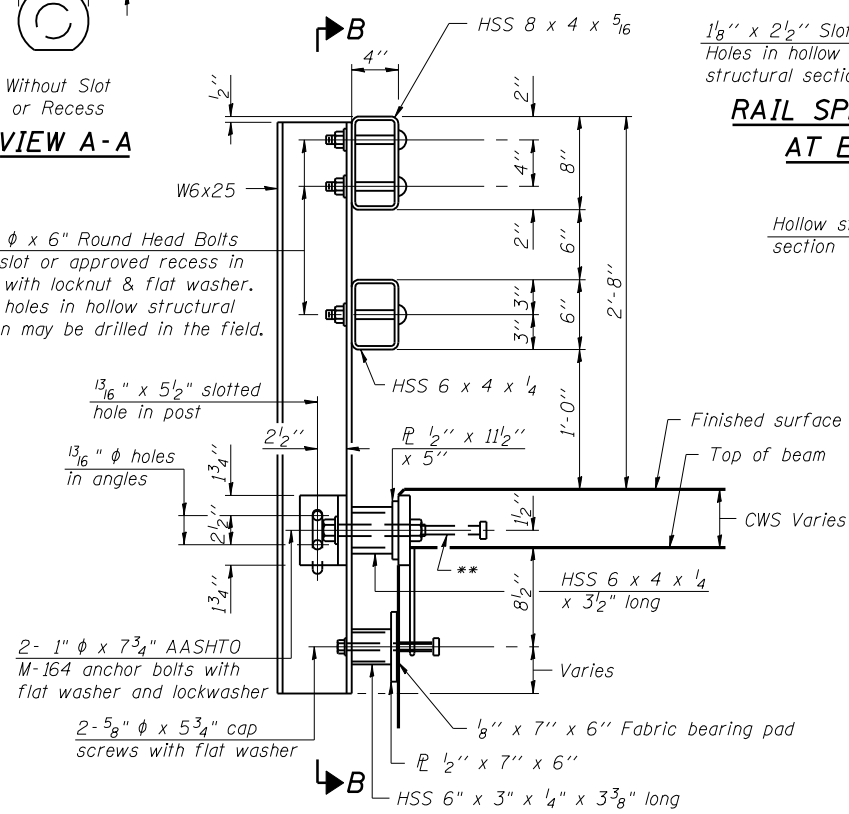
VIEW E-E



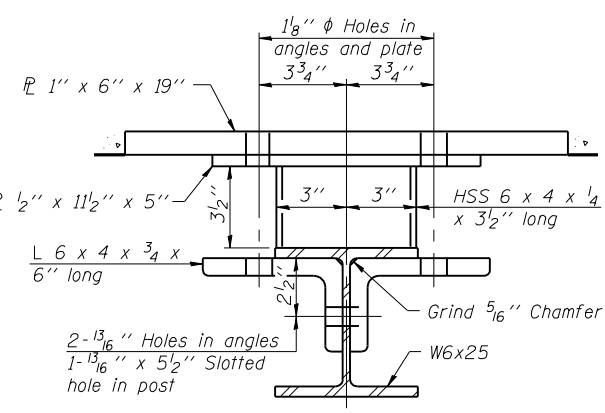
END OF RAIL DETAILS



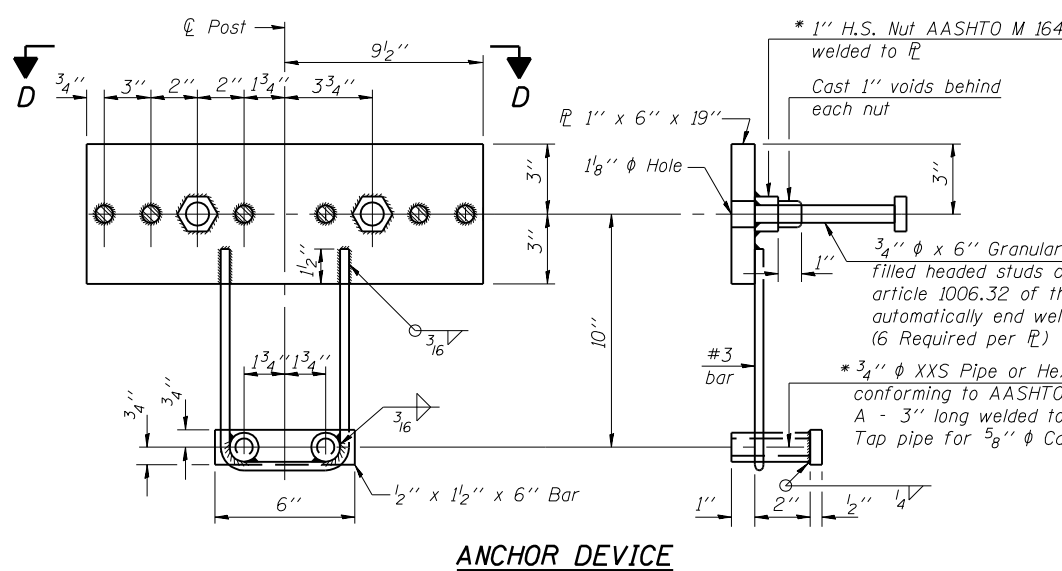
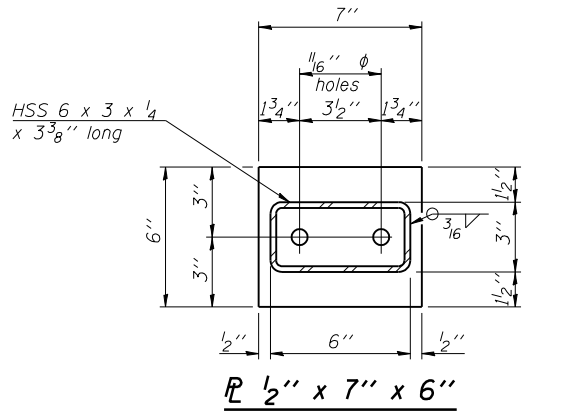
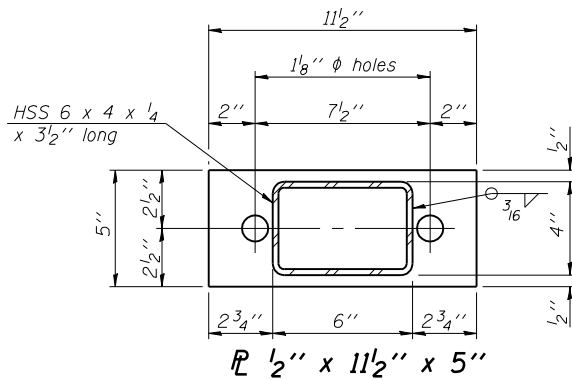
SECTION B-B



SECTION AT RAIL POST



SECTION C-C



ANCHOR DEVICE

Notes:
All field drilled holes shall be coated with an approved zinc rich paint before erection.
For multi-span bridges, sufficient 1/4" x 6" x 1'-2" galvanized steel shims shall be provided to align rail between adjacent spans. Cost included with Steel Bridge Rail, Type SM.
Steel rail elements shall be galvanized according to Article 509.05 of the Standard Specifications.
** The studs of the anchor devices shall be placed below the top reinforcement bars and the outermost longitudinal reinforcement bar shall be placed directly above the studs of the rail post anchor device.

BILL OF MATERIAL

Item	Unit	Quantity
Steel Railing, Type SM	Foot	86

STEEL RAILING, TYPE SM
WITH CONCRETE WEARING SURFACE
F.A.P 502 ROUTE IL 57 SEC. 54BR-1
ADAMS COUNTY
STATION 114+75.00
STRUCTURE NO. 001-0014

* Threaded areas shall be plugged or blocked off during casting of beam. Galvanized after fabrication.

7/2/2007

\$FILE\$

DESIGNED - WLW
CHECKED - ADL
DRAWN - BGJ
CHECKED - ADL
R-34CWS

11-1-06 (6'-3" Maximum Post Spacing) (5" minimum to 7 7/8" maximum CWS thickness)

STATE OF ILLINOIS
DEPARTMENT OF TRANSPORTATION

ROUTE NO.	SECTION	COUNTY	TOTAL SHEETS	SHEET NO.
F.A.P. 502	54BR-1	ADAMS	28	21
FED. ROAD DIST. NO. 7	ILLINOIS	FED. AID PROJECT-		

SHEET NO. 7
9 SHEETS

NOTES

Contract #72873

Bar splicer assemblies shall be of an approved type and shall develop in tension at least 125 percent of the yield strength of the lapped reinforcement bars.

Splicer rods shall be of minimum 60 ksi yield strength, threaded or coiled full length. All reinforcement bars shall be lapped and tied to the splicer rods or dowel bars.

Bar splicer assemblies shall be epoxy coated according to the requirements for reinforcement bars.

Other systems of similar design may be submitted to the Engineer for approval. Approval shall be based on certified test results from an approved testing laboratory that the proposed bar splicer assembly satisfies the following requirements:

- ① Minimum Capacity (Tension in kips) = $1.25 \times f_y \times A_t$
- ② Minimum *Pull-out Strength (Tension in kips) = $1.25 \times f_{sallow} \times A_t$

Where f_y = Yield strength of lapped reinforcement bars in ksi.

f_{sallow} = Allowable tensile stress in lapped reinforcement bars in ksi (Service Load)

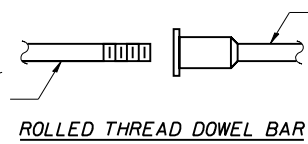
A_t = Tensile stress area of lapped reinforcement bars.

* = 28 day concrete

Bar Size to be Spliced	Splicer Rod or Dowel Bar Length	Strength Requirements	
		Min. Capacity kips - tension	Min. Pull-Out Strength kips - tension
#4	1'-8"	14.7	5.9
#5	2'-0"	23.0	9.2
#6	2'-7"	33.1	13.3
#7	3'-5"	45.1	18.0
#8	4'-6"	58.9	23.6
#9	5'-9"	75.0	30.0
#10	7'-3"	95.0	38.0
#11	9'-0"	117.4	46.8

Bar splicer assemblies shall be according to Section 508 of the Standard Specifications, except as noted. The furnishing and installation of bar splicer assemblies will be measured and paid for at the contract unit price each for "BAR SPLICERS."

The diameter of this part is equal or larger than the diameter of bar spliced.

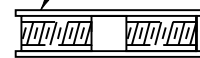


ROLLED THREAD DOWEL BAR



** ONE PIECE

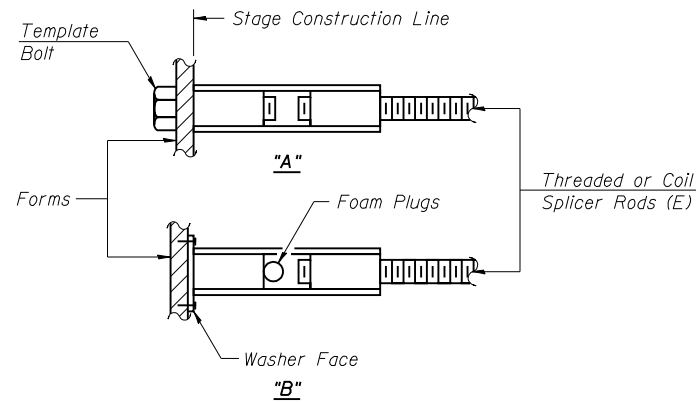
Wire Connector



WELDED SECTIONS

BAR SPLICER ASSEMBLY ALTERNATIVES

** Heavy Hex Nuts conforming to ASTM A 563, Grade C, D or DH may be used.

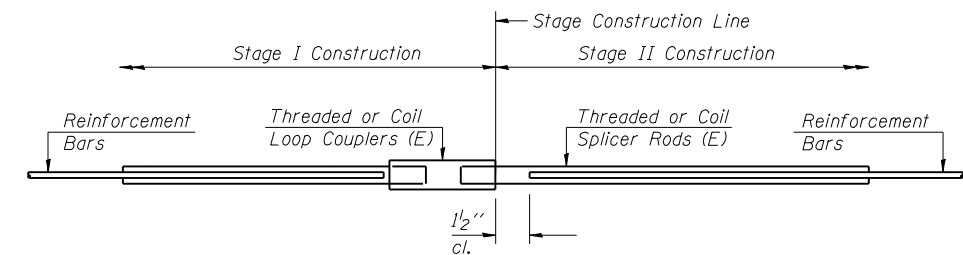


INSTALLATION AND SETTING METHODS

"A" : Set bar splicer assembly by means of a template bolt.

"B" : Set bar splicer assembly by nailing to wood forms or cementing to steel forms.

(E) : Indicates epoxy coating.



STANDARD

Bar Size	No. Assemblies Required	Location
#4	42	Stage Const Line
#5	2	Stage Const Line

DESIGNED - WLW
CHECKED - ADL
DRAWN - BGJ
CHECKED - ADL

BSD-1

11-1-06

BAR SPLICER ASSEMBLY DETAILS
F.A.P 502 ROUTE IL 57 SEC. 54BR-1
ADAMS COUNTY
STATION 114+75.00
STRUCTURE NO. 001-0014

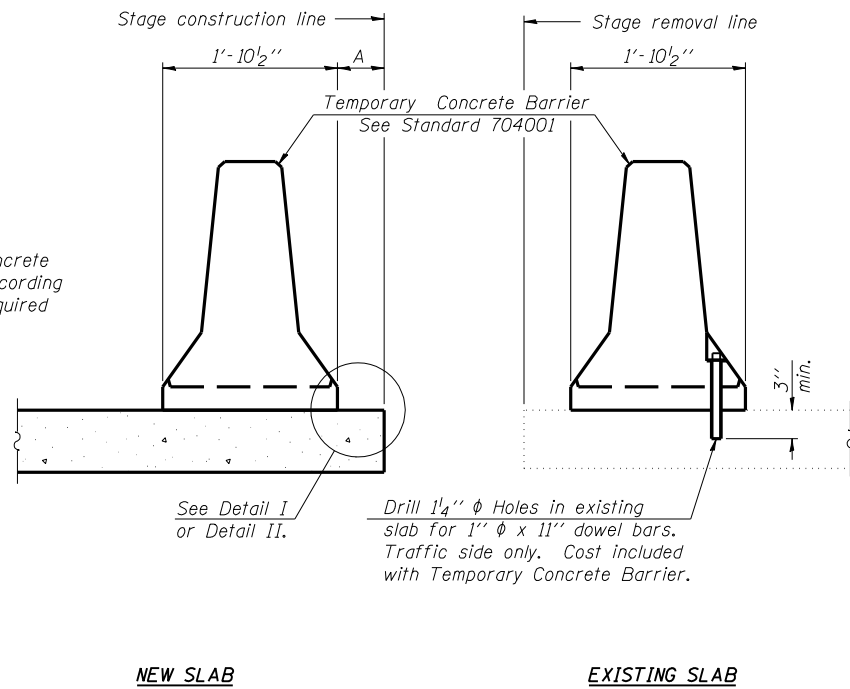
7/2/2007

\$FILE\$

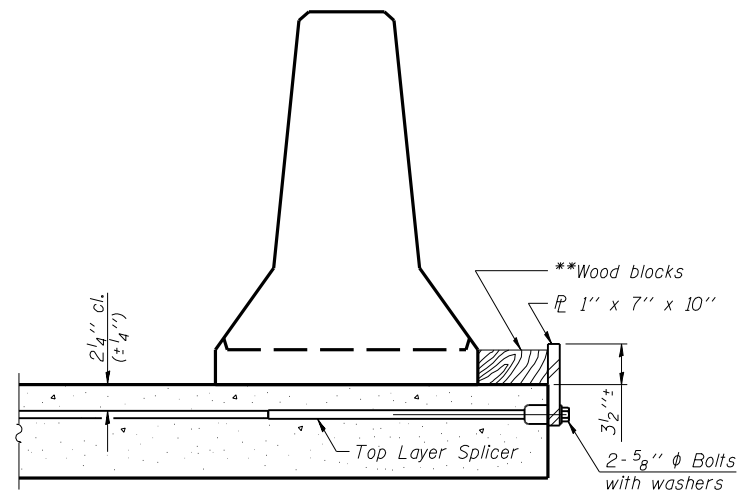
STATE OF ILLINOIS
DEPARTMENT OF TRANSPORTATION

ROUTE NO.	SECTION	COUNTY	TOTAL SHEETS	SHEET NO.	SHEET NO. 8 9 SHEETS
F.A.P. 502	54BR-1	ADAMS	28	22	
FED. ROAD DIST. NO. 7	ILLINOIS	FED. AID PROJECT-			

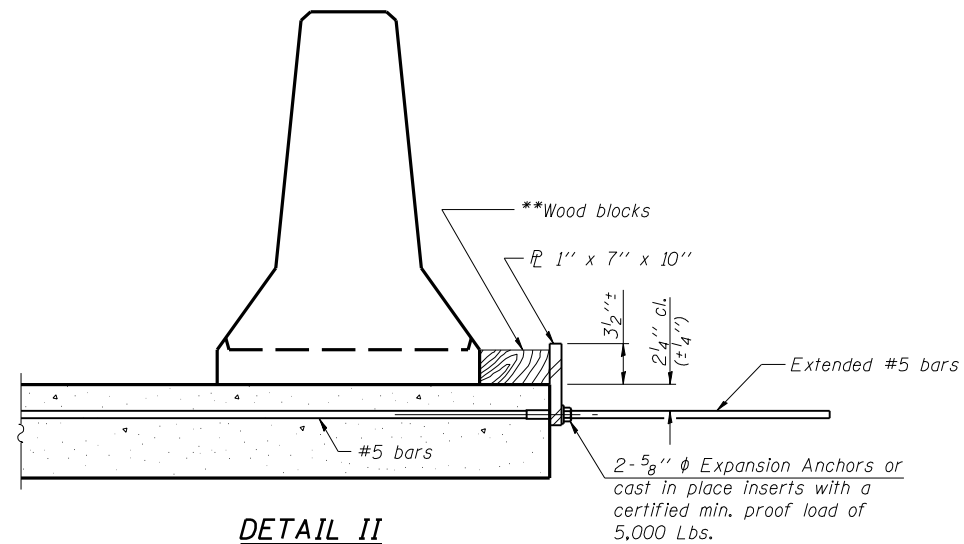
Contract #72873



SECTIONS THRU SLAB



DETAIL I



DETAIL II

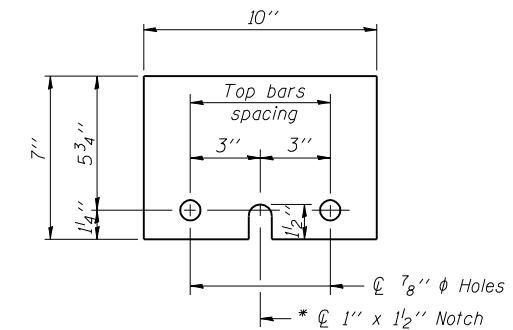
** Wood blocks may be omitted when required to provide minimum stage traffic lane width. When the wood blocks are omitted, the concrete barrier shall be in direct contact with the steel retainer plate.

NOTES

Detail I - With Bar Splicer or Couplers:
Connect one (1) 1"x7"x10" steel \bar{L} to the top layer of couplers with 2-5/8" ϕ bolts screwed to coupler at approximate \bar{C} of each barrier panel.

Detail II - With Extended Reinforcement Bars:
Connect one (1) 1"x7"x10" steel \bar{L} to the concrete slab with 2-5/8" ϕ Expansion Anchors or cast in place inserts spaced between the top layer of reinforcement at approximate \bar{C} of each barrier panel.

Cost of anchorage is included with Temporary Concrete Barrier.
The 1" x 7" x 10" plate shall not be removed until stage II construction forms and all reinforcement bars are in place and the concrete is ready to be placed.



STEEL RETAINER \bar{L} 1" x 7" x 10"

* Required only with Detail II

TEMPORARY CONCRETE BARRIER
FOR STAGE CONSTRUCTION
F.A.P 502 ROUTE IL 57 SEC. 54BR-1
ADAMS COUNTY
STATION 114+75.00
STRUCTURE NO. 001-0014

DESIGNED - WLW
CHECKED - ADL
DRAWN - SEB
CHECKED - ADL

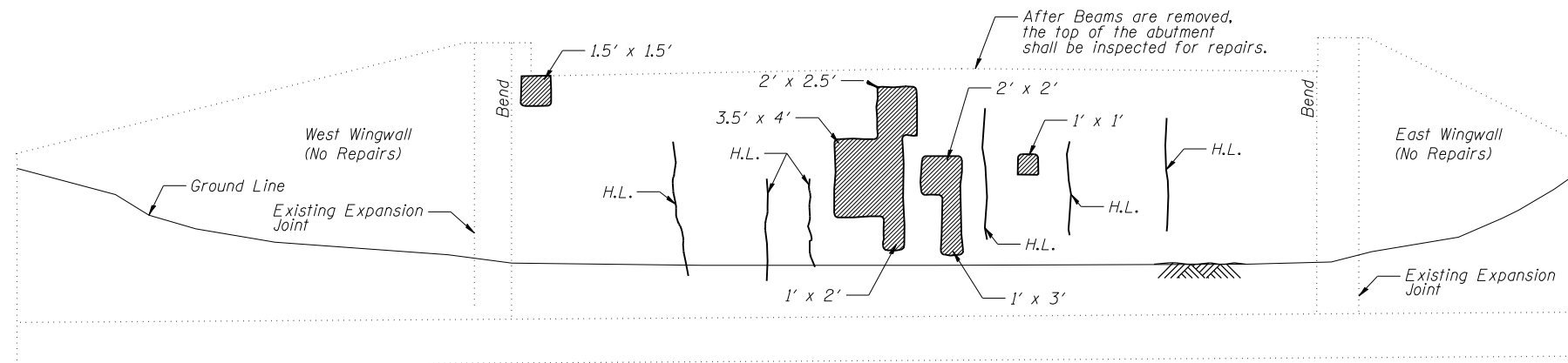
R-27

11-1-06

STATE OF ILLINOIS
DEPARTMENT OF TRANSPORTATION

ROUTE NO.	SECTION	COUNTY	TOTAL SHEETS	SHEET NO.	SHEET NO. 9
F.A.P. 502	54BR-1	ADAMS	28	23	9 SHEETS
FED. ROAD DIST. NO. 7	ILLINOIS	FED. AID PROJECT			

Contract #72873



NORTH ABUTMENT
(Looking North)

BILL OF MATERIAL - NORTH ABUTMENT

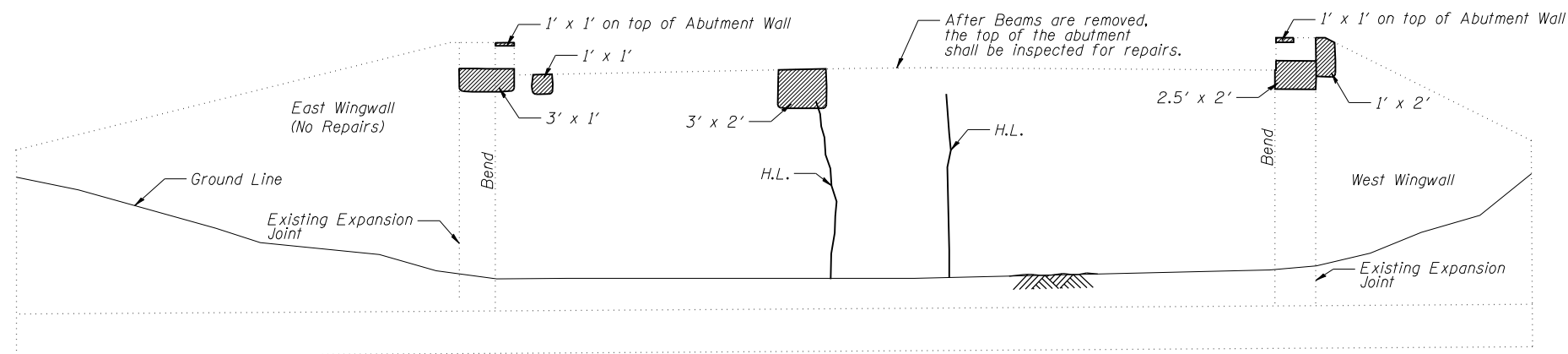
Item	Unit	Total
Structural Repair of Concrete (Depth equal to or less than 5 in.)	Sq. Ft.	31

LEGEND

Structural Repair of Concrete (Depth equal to or less than 5 in.)

H.L. Hairline Crack - Not to be sealed

Note: Crack widths are $\frac{1}{8}'' \pm \frac{1}{16}''$ unless otherwise noted.



SOUTH ABUTMENT
(Looking South)

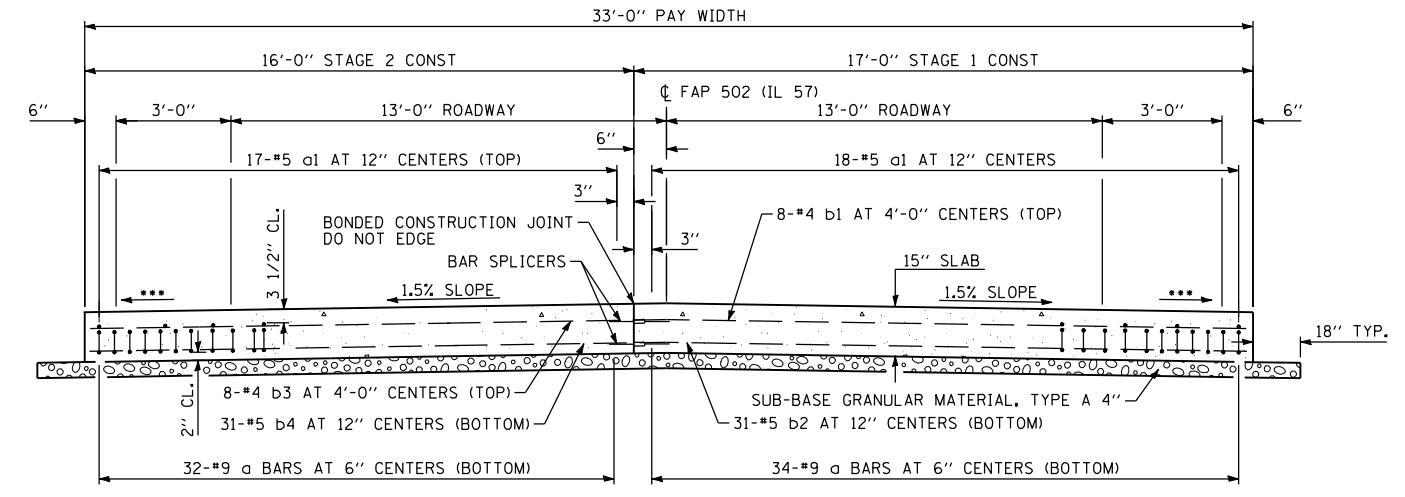
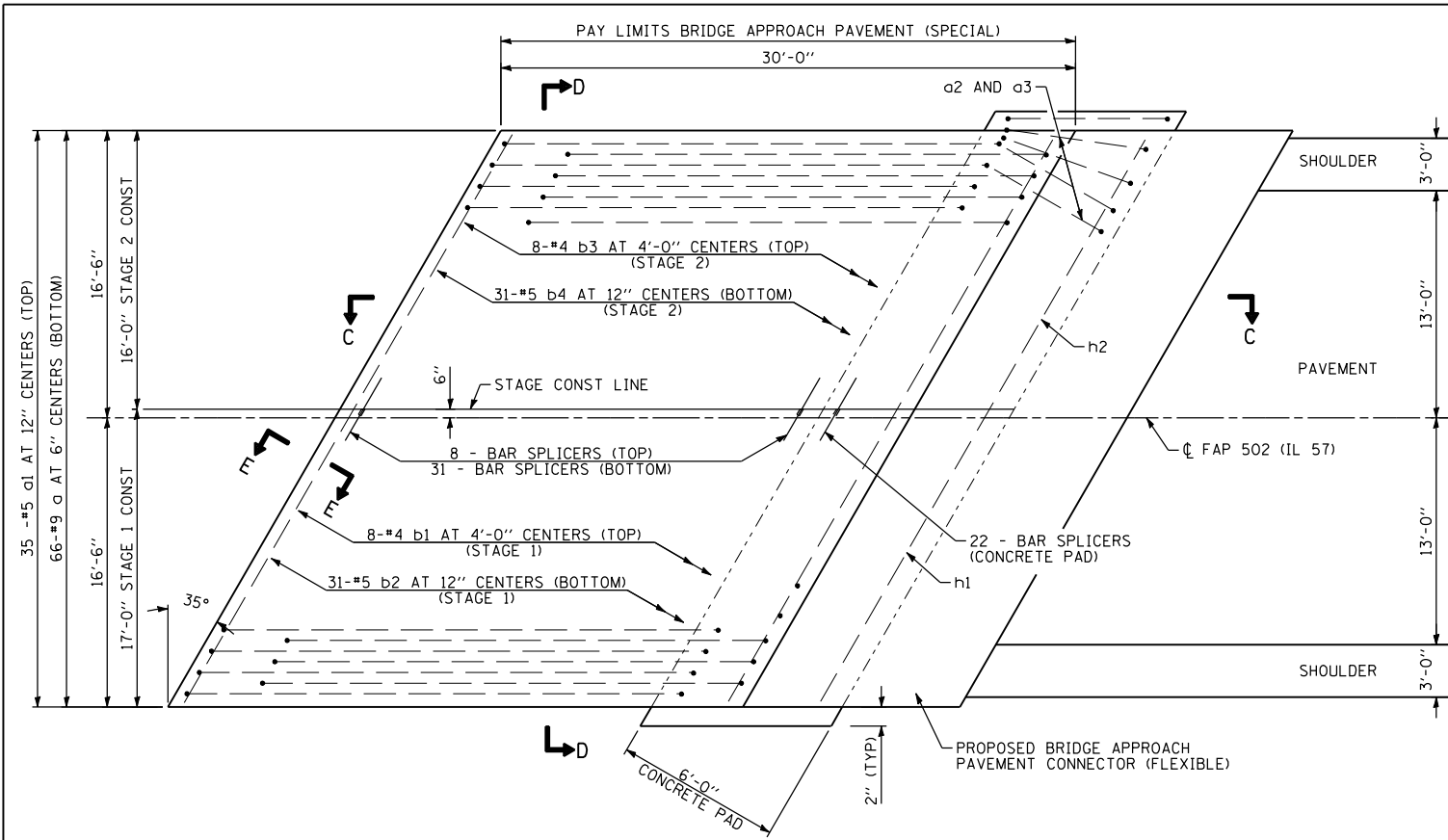
BILL OF MATERIAL - SOUTH ABUTMENT

Item	Unit	Total
Structural Repair of Concrete (Depth equal to or less than 5 in.)	Sq. Ft.	19

DESIGNED - WLW
CHECKED - ADL
DRAWN - SEB
CHECKED - ADL

ABUTMENT REPAIR DETAILS
F.A.P 502 ROUTE IL 57 SEC. 54BR-1
ADAMS COUNTY
STATION 114+75.00
STRUCTURE NO. 001-0014

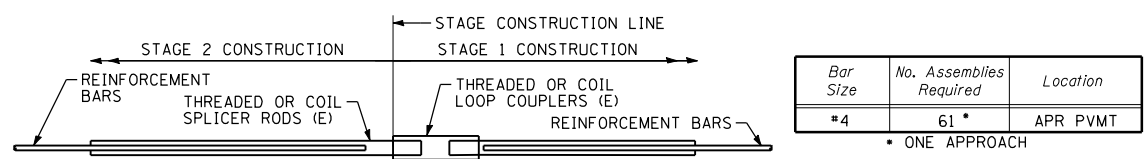
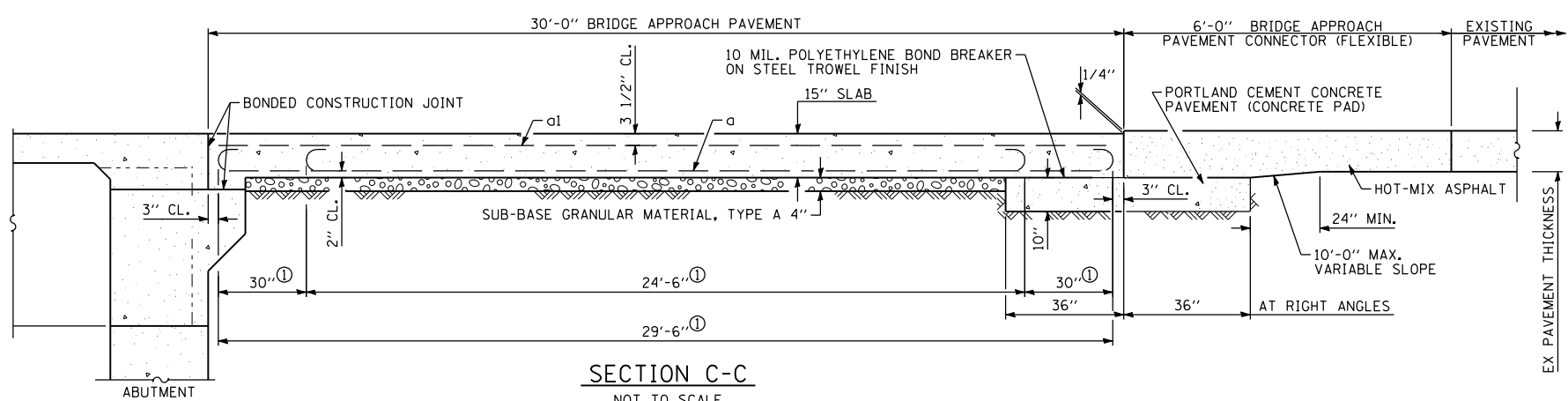
F.A.P. RTE.	SECTION	COUNTY	TOTAL SHEETS	SHEET NO.
502	54BR-1	ADAMS	28	24
STA.		TO STA.		
FED. ROAD DIST. NO.	ILLINOIS	FED. AID PROJECT		



REINFORCEMENT - ONE APPROACH

BAR	NO.	SIZE	LENGTH (FT)	SHAPE
a	66	#9	29'-6"	()
a1	35	#5	29'-6"	()
a2	34	#4	6'-8"	()
a3	34	#4	5'-8"	()
b1	8	#4	20'-3"	()
b2	31	#5	20'-3"	()
b3	8	#4	19'-2"	()
b4	31	#5	19'-2"	()
h1	22	#5	20'-3"	()
h2	22	#5	19'-2"	()
ITEM		UNIT	QUANTITY	
REINFORCEMENT BARS, EPOXY COATED		POUND	10,366	

COST OF REINFORCEMENT FOR BRIDGE APPROACH PAVEMENT AND CONCRETE PAD TO BE INCLUDED IN THE PAY ITEM "BRIDGE APPROACH PAVEMENT (SPECIAL)".



SEE DETAILS AND NOTES ON SHEET OF FOR ADDITIONAL INFORMATION ON BAR SPLICERS. COST OF BAR SPLICERS FOR BRIDGE APPROACH PAVEMENT TO BE INCLUDED IN THE PAY ITEM "BRIDGE APPROACH PAVEMENT (SPECIAL)".

SEE STANDARD 420401-05 FOR ADDITIONAL DETAILS NOT SHOWN

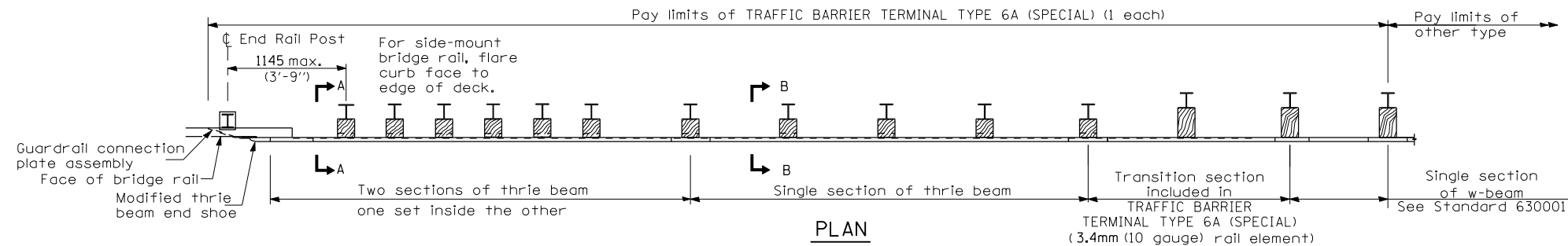
REVISIONS	
NAME	DATE

ILLINOIS DEPARTMENT OF TRANSPORTATION
BRIDGE APPROACH PAVEMENT (SPECIAL)
FAP 502 (IL 57)
SECTION 54BR-1
ADAMS COUNTY

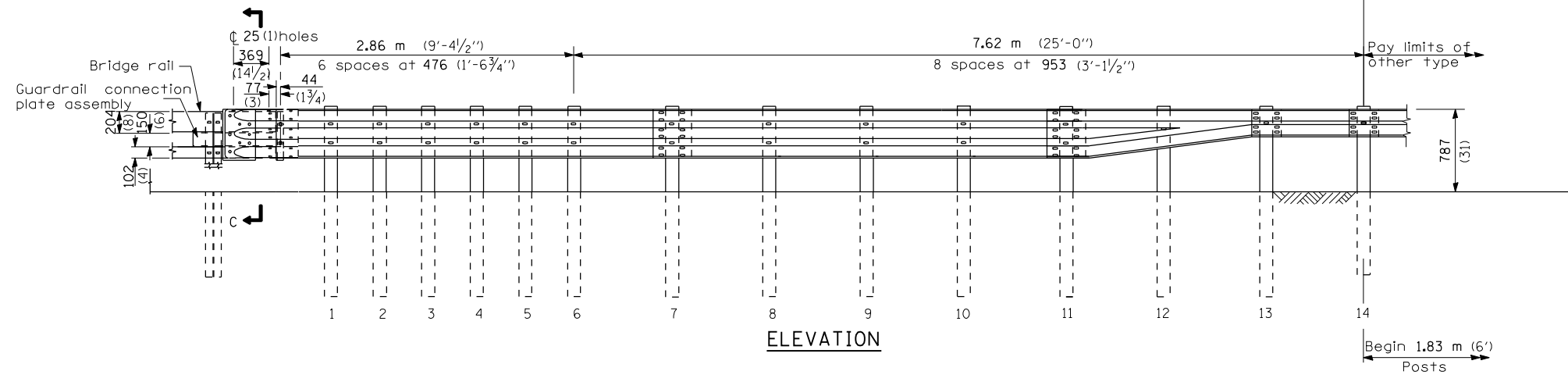
SCALE: VERT. NONE
HORIZ. 6/28/2007
DRAWN BY SEB
CHECKED BY EBB

PLOT DATE = 7/2/2007
PLOT SCALE = 1/8"=1'-0"
PLOT SIZE = 18" x 24"

F.A.P. RTE.	SECTION	COUNTY	TOTAL SHEETS	SHEET NO.
502	54BR-1	ADAMS	28	25
STA.		TO STA.		
FED. ROAD DIST. NO.	ILLINOIS	FED. AID PROJECT		



SEE STANDARD 631032 FOR DETAILS NOT SHOWN.



DETAIL OF TRAFFIC BARRIER TERMINAL, TYPE 6A (SPECIAL)

REVISIONS	
NAME	DATE

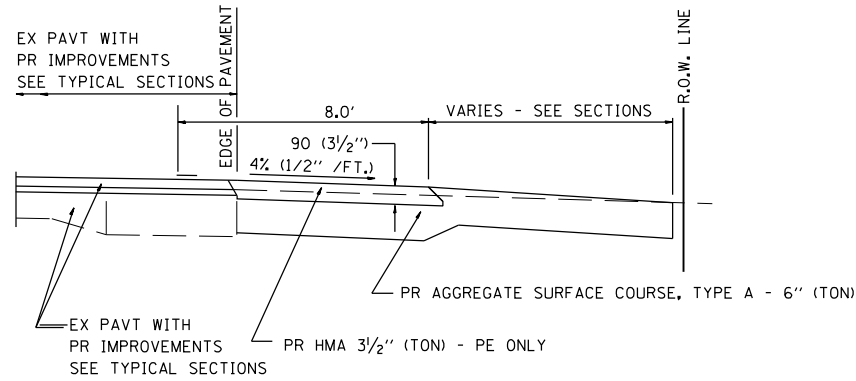
ILLINOIS DEPARTMENT OF TRANSPORTATION
 MISCELLANEOUS DETAILS
 FAP 502 (IL 57)
 SECTION 54BR-1
 ADAMS COUNTY

SCALE: VERT. NONE
 HORIZ. 6/28/2007
 DATE: 6/28/2007

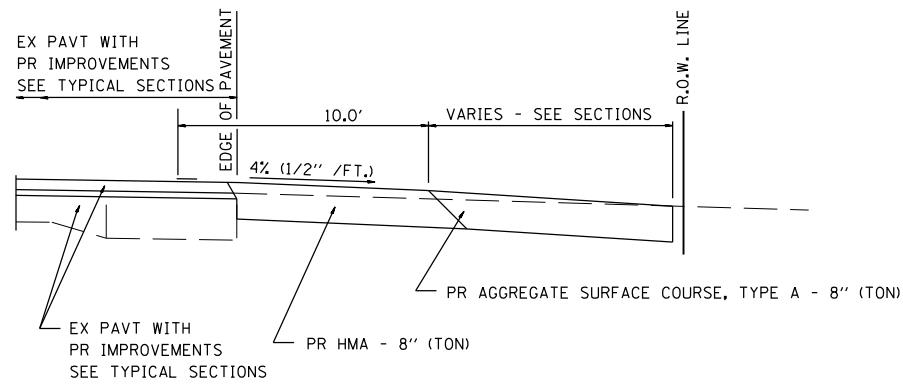
DRAWN BY: SEB
 CHECKED BY: EBB

PLOT DATE = 7/2/2007
 PLOT SCALE = 1/8" = 1'-0"
 PLOT SCALE = 1/8" = 1'-0"

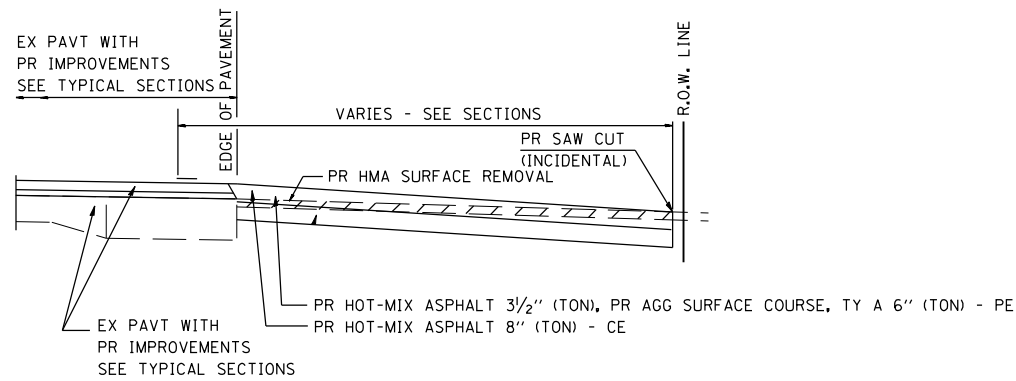
F.A.P. RTE.	SECTION	COUNTY	TOTAL SHEETS	SHEET NO.
502	54BR-1	ADAMS	28	26
STA.		TO STA.		
FED. ROAD DIST. NO.	ILLINOIS	FED. AID PROJECT		



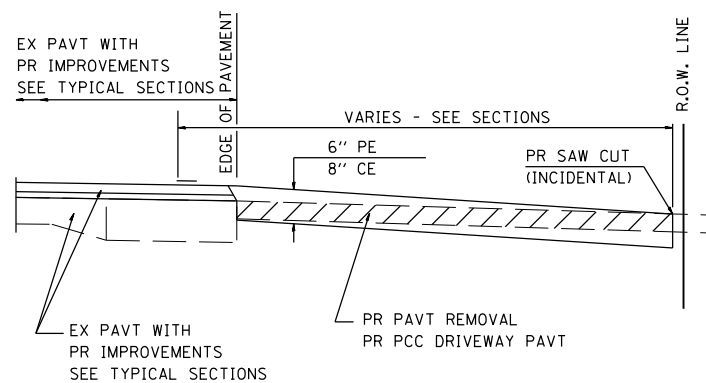
SECTION A-A FOR EX EARTH/AGGREGATE FE & PE



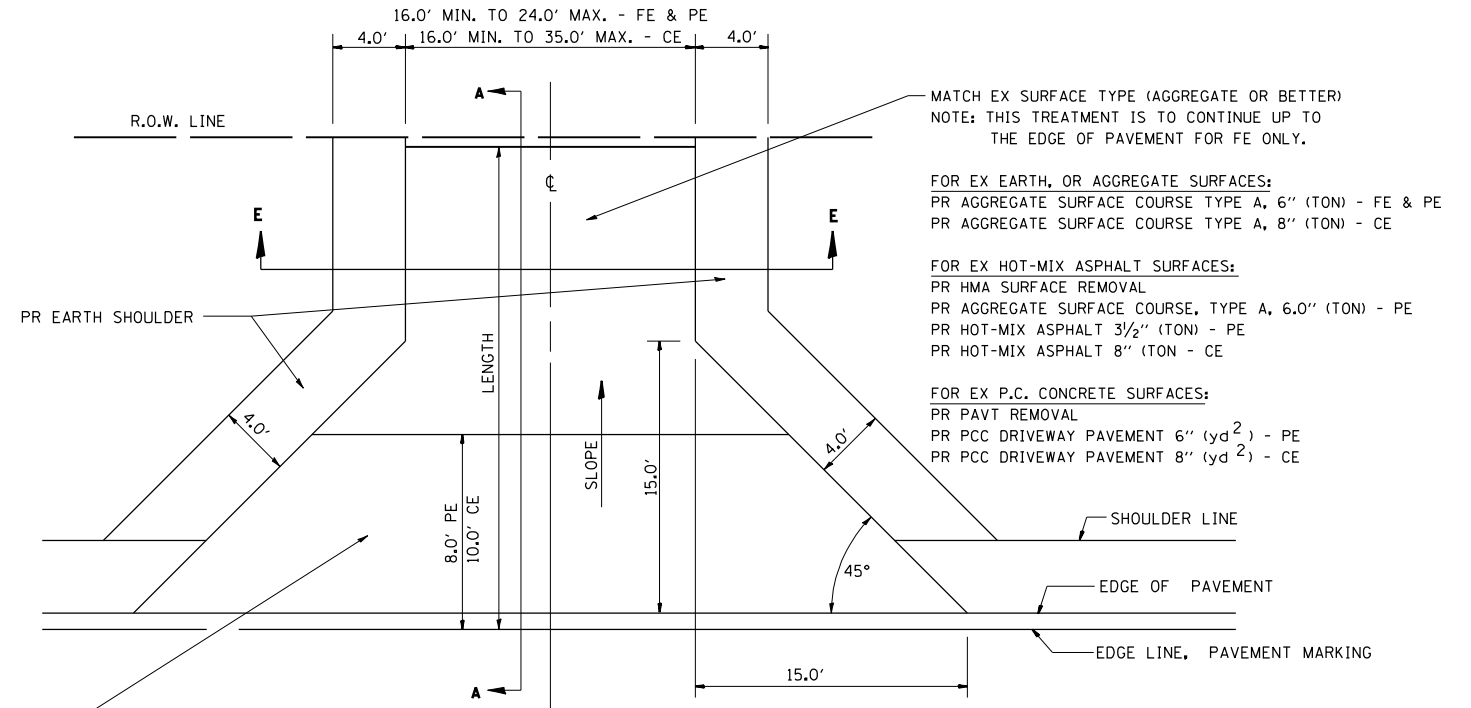
SECTION A-A FOR EX EARTH/AGGREGATE CE



SECTION A-A FOR EX HOT-MIX ASPHALT PE & CE



SECTION A-A FOR EX P.C. CONC. PE & CE



FOR EX EARTH, AGGREGATE, OR HOT-MIX ASPHALT SURFACES:
 PR HMA SURFACE REMOVAL (IF APPLICABLE)
 PR AGGREGATE SURFACE COURSE TYPE A 6" (TON) - FE
 PR AGGREGATE SURFACE COURSE TYPE A, 6" (TON) &
 PR HOT-MIX ASPHALT 3 1/2" (TON) - PE
 PR HOT-MIX ASPHALT 8" (TON) - CE

FOR P.C. CONCRETE SURFACES:
 PR PAVT REMOVAL
 PR PCC DRIVEWAY PAVT 6" (yd²) - PE
 PR PCC DRIVEWAY PAVT 8" (yd²) - CE

GENERAL NOTES:
 THE RESIDENT ENGINEER WILL DETERMINE THE EXACT TYPE OF IMPROVEMENT TO BE COMPLETED FOR ALL ENTRANCES, SIDEROADS AND MAILBOX TURNOUTS ON THIS PROJECT.

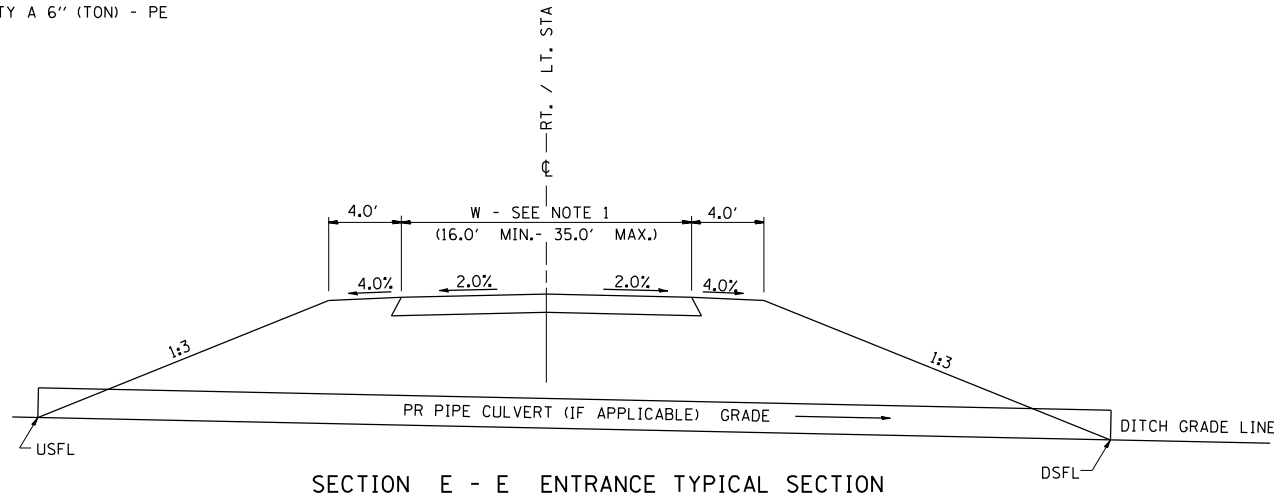
THE PLAN DETAILS AND SCHEDULES SHOULD BE USED AS A GUIDE FOR THE ENGINEER TO IMPLEMENT THE FINAL DESIGN. THE ENGINEER MAY DECIDE TO SALVAGE PORTIONS OF THE EXISTING ENTRANCE PAVEMENT STRUCTURE; THEREFORE, REDUCING PAY ITEM QUANTITIES. NO ADDITIONAL PAYMENT WILL BE ALLOWED FOR THIS REDUCTION IN QUANTITIES.

ANY WORK THE ENGINEER REQUIRES WHICH IS NOT COVERED BY A PAY ITEM CONTAINED IN THE PLANS WILL BE PAID FOR IN ACCORDANCE WITH ARTICLE 109.04 OF THE STANDARD SPECIFICATIONS.

HOT-MIX ASPHALT REQUIRED TO CONSTRUCT THE ENTRANCES SHALL BE IN ACCORDANCE WITH THE APPLICABLE PORTIONS OF SECTION 406 AND 408 OF THE STANDARD SPECIFICATIONS AND AS DIRECTED BY THE ENGINEER.

WHEN THE HOT-MIX ASPHALT PROPOSED FOR THE IMPROVEMENT IS THICKER THAN 3 INCHES AND REQUIRE PLACEMENT IN MORE THAN ONE LIFT. THE BOTTOM LIFT(S) SHALL MEET THE REQUIREMENTS OF HOT-MIX ASPHALT BASE COURSE IN SECTION 406 OF THE STANDARD SPECIFICATIONS AND THE TOP LIFT OF 2 INCHES SHALL MEET THE APPLICABLE REQUIREMENTS OF HOT-MIX ASPHALT SURFACE COURSE OF SECTION 406 OF THE STANDARD SPECIFICATIONS. SURFACE COURSE MIXTURE SHALL BE MIX "C".

THIS WORK WILL BE PAID FOR AT THE CONTRACT UNIT PRICE PER TON FOR "INCIDENTAL HOT-MIX ASPHALT SURFACING" WHICH SHALL INCLUDE ALL MATERIALS, EQUIPMENT, AND LABOR INVOLVED.



SECTION E - E ENTRANCE TYPICAL SECTION

NOTE 1: WIDTH OF ENTRANCE MAY BE INCREASED AT THE PIPE CULVERT DUE TO THE DITCHLINE BEING LOCATED IN THE ENTRANCE FLARE AREA.

ENTRANCE DETAILS

REVISIONS	
NAME	DATE

ILLINOIS DEPARTMENT OF TRANSPORTATION
 MISCELLANEOUS DETAILS
 FAP 502 (IL 57)
 SECTION 54BR-1
 ADAMS COUNTY

SCALE: VERT. NONE
 HORIZ. 6/28/2007
 DATE: 6/28/2007
 DRAWN BY: SEB
 CHECKED BY: EBB

PLOT DATE = 7/2/2007
 PLOT SCALE = 1/8" = 1'-0"
 PLOT FILE = I:\025\025.dgn

