

F.A.P. RTE.	SECTION	COUNTY	TOTAL SHEETS	SHEET NO.
VAR	**	***	9	1

\*\* DIST 8 DEEP WELLS 2008-1  
\*\*\* MADISON & ST. CLAIR

STATE OF ILLINOIS  
DEPARTMENT OF TRANSPORTATION  
DIVISION OF HIGHWAYS

**PROPOSED  
HIGHWAY PLANS**

VARIOUS ROUTES  
SECTION DIST 8 DEEP WELLS 2008-1  
PROJECT  
MADISON AND ST. CLAIR COUNTIES

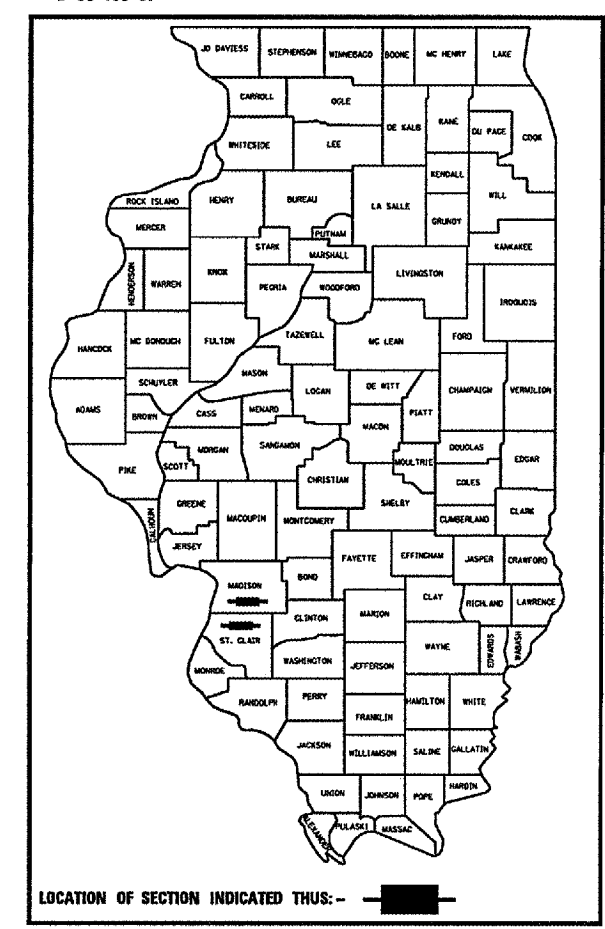
C-98-108-07

INDEX OF SHEETS

- 1 COVER SHEET
- 2 GENERAL NOTES
- 3 SUMMARY OF QUANTITIES
- 4 LOCATION NO. 1: SITE PLAN VENICE WELLS (IL ROUTE 3)
- 5 LOCATION NO. 2: SITE PLAN 25TH STREET WELLS
- 6 LOCATION NO. 3: SITE PLAN MISSOURI AVENUE WELLS
- 7 LOCATION NO. 4: SITE PLAN TRI-LEVEL WELLS
- 8 TYPICAL WELL DETAILS LOCATION 1, 2 & 4
- 9 TYPICAL WELL DETAILS LOCATION 3

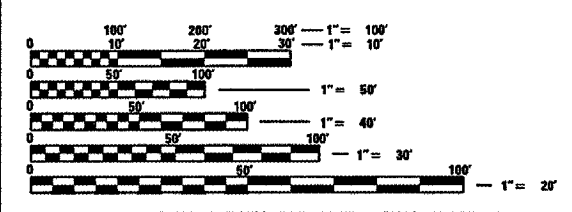
STANDARDS  
701601-04  
702001-06

D-98-103-07



LOCATION OF SECTION INDICATED THUS: - [black rectangle] -

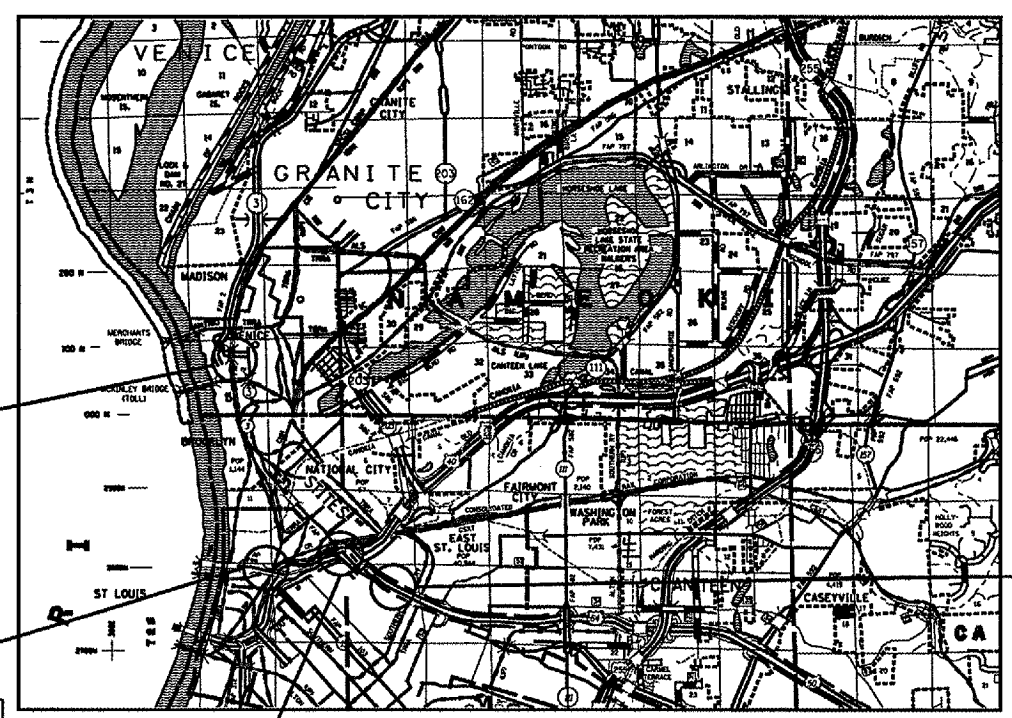
MICROFILMED \_\_\_\_\_  
REEL NUMBER \_\_\_\_\_  
AWARDED \_\_\_\_\_  
RESIDENT ENGINEER \_\_\_\_\_  
AS BUILT CHANGES WERE MADE  
ON THE FOLLOWING SHEETS



FULL SIZE PLANS HAVE BEEN PREPARED USING STANDARD ENGINEERING SCALES. REDUCED SIZED PLANS WILL NOT CONFORM TO STANDARD SCALES. IN MAKING MEASUREMENTS ON REDUCED PLANS, THE ABOVE SCALES MAY BE USED.

J.U.L.I.E.  
JOINT UTILITY LOCATION INFORMATION FOR EXCAVATION  
1-800-892-0123

CONTRACT NO. 76B28



LOCATION 1  
VENICE WELLS (IL RTE 3)  
LOCATION 1  
LATITUDE: 38.67174  
LONGITUDE: -90.17479

LOCATION 3  
MISSOURI AVENUE WELLS  
LOCATION 3  
WELL 2:  
LATITUDE: 38.62881  
LONGITUDE: -90.16176  
WELL 3:  
LATITUDE: 38.62905  
LONGITUDE: -90.16117  
WELL 4:  
LATITUDE: 38.62855  
LONGITUDE: -90.16222

LOCATION 4  
TRI-LEVEL WELLS  
LOCATION 4  
LATITUDE: 38.6335  
LONGITUDE: -90.1451

NOT TO SCALE



LOCATION 2  
25TH STREET WELLS  
LOCATION 2  
LATITUDE: 38.62752  
LONGITUDE: -90.13820

TRAFFIC DATA:  
LOCATION 1: VENICE (IL ROUTE 3) = 6,200 (2005)  
LOCATION 2: EB I-64 @ 25TH STREET = 3,900 (2003)  
ST. CLAIR AVENUE = 4,150 (2003)  
RAMP C = 950 (2003)  
LOCATION 3: MISSOURI AVENUE = 2,900 (2003)  
LOCATION 4: TRI-LEVEL & 25TH STREET = 68,800 (2005)

STATE OF ILLINOIS  
DEPARTMENT OF TRANSPORTATION  
DIVISION OF HIGHWAYS

SUBMITTED June 20, 2007  
Mary C. Spruill  
DEPUTY DIRECTOR OF HIGHWAYS  
REGION FIVE ENGINEER

August 17, 2007  
Eric E. Stamm  
INTERIM ENGINEER OF DESIGN AND ENVIRONMENT

August 17, 2007  
Milton R. Sees, P.E.  
DIRECTOR, DIVISION OF HIGHWAYS

**PRINTED BY THE AUTHORITY  
OF THE STATE OF ILLINOIS**

PROJECT ENGINEER: PATTI LEBEAU (618) 346-3179  
SQUAD LEADER: CHERYL KEPLAR (618) 346-3186

\*DATE\*\*  
\*DATE-TIME\*  
\*REF. SPEC\*  
\*REF.