

**INDEX OF SHEETS**

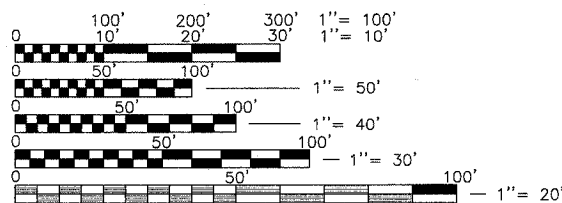
Sheet #	Title
1	Cover Sheet
2	Standard Symbols and General Notes
3-4	Summary of Quantities
5-6	Typical Sections
7-7A	Schedule of Quantities
8	Alignment, Curve Data, and Benchmarks
9	Tie Points and Control
10-20	Roadway & Drainage Plan and Profiles
21	Road Closure Detour Plan
22-28	Suggested Staged Traffic Control Plan
29-30	Dist 1 Traffic Control Details
31-41	Sanitary & Water Plan and Profiles
42-44	Watermain Connection Details
45-46	Water and Sewer Construction Details
47-49	Erosion and Sediment Control Plan
50-51	Streetscape and Landscape Plan
52	Streetscape Details and Landscape Notes
53-54	District 1 Construction Details
55-60	Geometric, Striping, and Signage Plan
61	District 1 Typical Marking Detail
62	Underpass General Plan
63	Underpass Box Culvert Details
64	Underpass Bar Spacer Assembly Details
65	Underpass Braced Excavation
66	Underpass Boring Logs
67	Lighting Notes and Legends
68-69	Lighting Demolition
70-74	Lighting Plan
75-76	Lighting Details
77	District 1 Electrical Details
78	Traffic Signal Removal and Plan Modification - Belvidere Road
79	Cable Plan/Phase Diagram Modification - Belvidere Road
80	Temporary Traffic Signal Plan - Washington Street
81	Temporary Cable Plan/Phase Diagram - Washington Street
82	Traffic Signal Plan - Washington Street
83	Cable Plan/Phase Diagram - Washington Street
84	Temporary Traffic Signal Plan - Grand Ave.
85	Temporary Cable Plan/Phase Diagram - Grand Ave.
86	Traffic Signal Plan - Grand Ave.
87	Cable Plan/Phase Diagram - Grand Ave.
88-89	Interconnect Plan
90	Interconnect Schematic
91-95	District 1 Traffic Signal Details
96	Traffic Signal Details
97-122	Cross Sections

123-126 Lighting Controller, Duplex Type - Detail Added 9-10-07

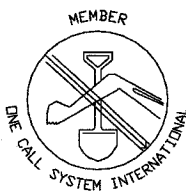
**DESIGN DESIGNATION: URBAN MINOR ARTERIAL**

**SCALES**

PLAN 1"=20'  
 PROFILES 1"=20' (HORIZONTAL)  
 1"=2' (VERTICAL)  
 CROSS SECTION 1"=5'



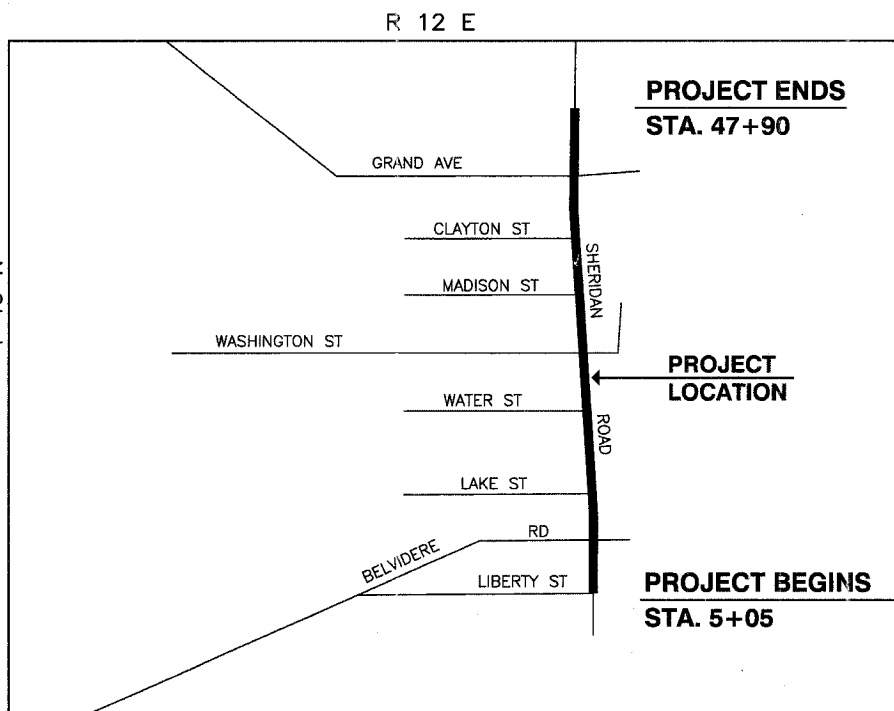
FULL SIZE PLANS HAVE BEEN PREPARED USING STANDARD ENGINEERING SCALES, REDUCED SIZED PLANS WILL NOT CONFORM TO STANDARD SCALES, IN MAKING MEASUREMENTS ON REDUCED PLANS, THE ABOVE SCALES MAY BE USED.



CALL J. U. L. I. E. BEFORE YOU DIG  
 1-800-892-0123  
 TOLL FREE

**CONTRACT NO. 83829**

**STATE OF ILLINOIS**  
**DEPARTMENT OF TRANSPORTATION**  
**DIVISION OF HIGHWAYS**  
**PLANS FOR PROPOSED**  
**FEDERAL AID URBAN PROJECT**  
**F.A.U. ROUTE 2736 SHERIDAN ROAD**  
**(BELVIDERE ROAD TO GRAND AVENUE)**  
**ROADWAY RECONSTRUCTION AND TRAFFIC SIGNALS**  
**SECTION No. 03-00227-00-RS**  
**PROJECT No. M-8003 (453)**  
**CITY OF WAUKEGAN**  
**LAKE COUNTY, ILLINOIS**  
**C-91-190-04**



GROSS LENGTH OF PROJECT = 4285 FEET 0.81 MILES  
 NET LENGTH OF PROJECT = 4285 FEET 0.81 MILES

**SPEED LIMIT**  
 POSTED SPEED: 30 MPH  
 DESIGN SPEED: 35 MPH

**TRAFFIC DATA**  
 ADT: 7300 (2005)  
 11542 (2030)

FAU RTE	SECTION	COUNTY	TOTAL SHEETS	SHEET NO.
2736	03-00227-00-RS	LAKE	122	1
F.H.W.A. REG.	ILLINOIS	PROJECT M-8003 (453)	CONTRACT NO. 83829	



LOCATION OF SECTION INDICATED THUS:

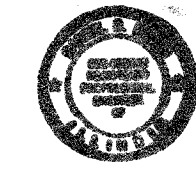
**CITY OF WAUKEGAN**

APPROVED 07/09/07  
  
 CITY OF WAUKEGAN, CITY ENGINEER

PASSED July 07-07  
  
 DISTRICT ONE ENGINEER OF LOCAL ROADS & STREETS

RELEASING FOR BID  
 BASED ON LIMITED REVIEW July 17, 2007  
  
 DEPUTY DIRECTOR OF HIGHWAYS, REGION ONE ENGINEER

**McCLURE ENGINEERING ASSOCIATES, INC.**  
 2728 Grand Avenue Waukegan, Illinois 60085  
 TEL 847-336-7100 FAX 847-336-7155  
 Design Firm License: Illinois #184-000816  
 Copyright 2007 by McClure Engineering Associates, Inc.



DANIEL B. DREW  
 ILLINOIS LICENSED PROFESSIONAL ENGINEER  
 NO. 062-055312  
 EXPIRATION DATE 11/30/07

PRINTED BY THE AUTHORITY OF THE STATE OF ILLINOIS

ASSOCIATE FIELD ENGINEER: JESSICA FELICIANO (847) 705-4487