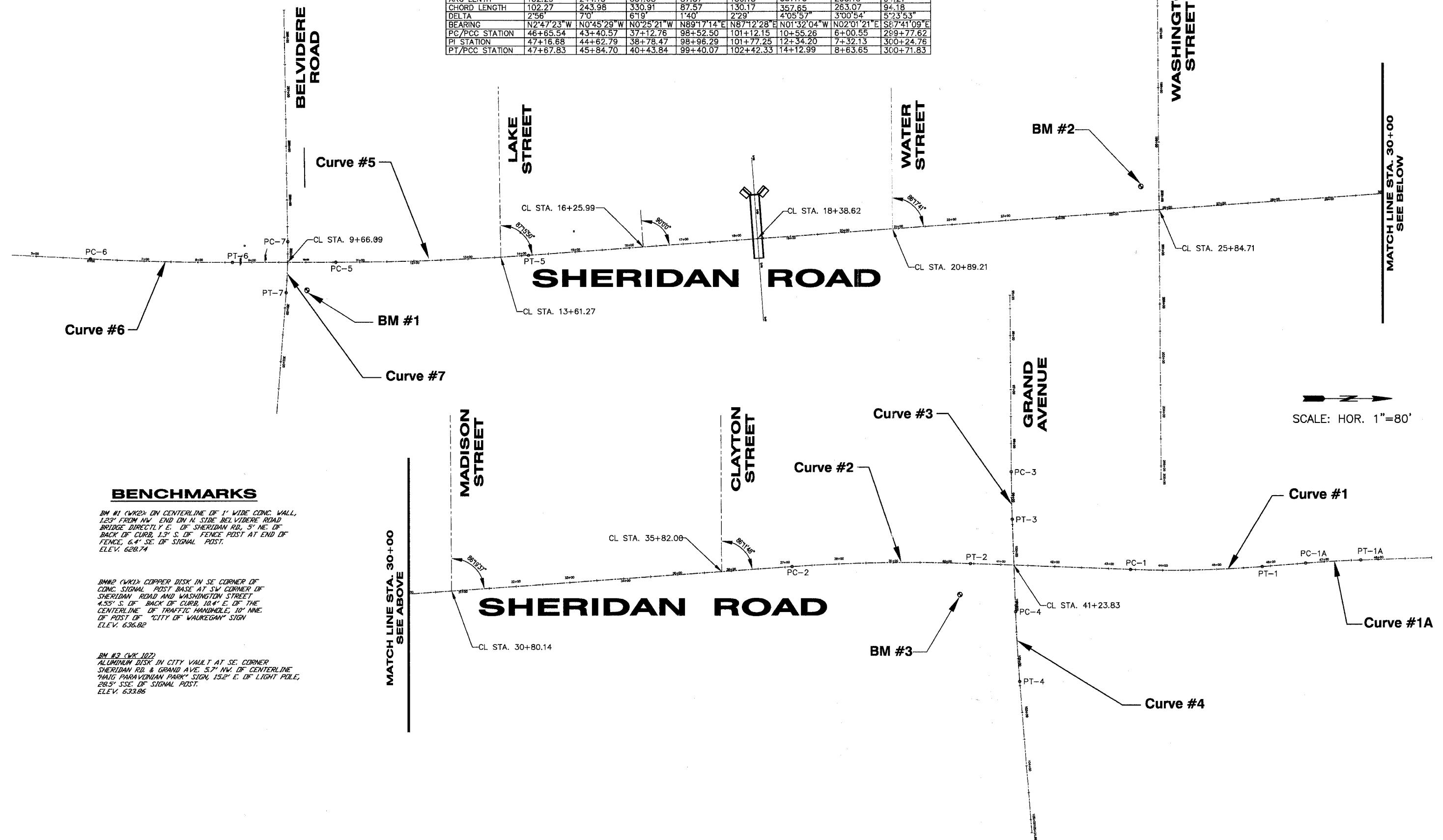


**CURVE DATA**

CURVE No.	1A	1	2	3	4	5	6	7
RADIUS	2000.00	2000.00	3000.00	3000.00	3000.00	5000.00	5000.00	1000.00
TANGENT LEGNTH	51.15	122.22	165.71	43.79	65.10	178.94	131.58	47.14
ARC LENTH	102.29	244.13	331.08	87.57	130.18	357.73	263.10	94.21
CHORD LENGTH	102.27	243.98	330.91	87.57	130.17	357.65	263.07	94.18
DELTA	2°56'	7°0'	6°19'	1°40'	2°29'	4°05'57"	3°00'54"	5°23'53"
BEARING	N2°47'23"W	N0°45'29"W	N0°25'21"W	N89°17'14"E	N87°12'28"E	N01°32'04"W	N02°01'21"E	S67°41'09"E
PC/PCC STATION	46+65.54	43+40.57	37+12.76	98+52.50	101+12.15	10+55.26	6+00.55	299+77.62
PI STATION	47+16.68	44+62.79	38+78.47	98+96.29	101+77.25	12+34.20	7+32.13	300+24.76
PT/PCC STATION	47+67.83	45+84.70	40+43.84	99+40.07	102+42.33	14+12.99	8+63.65	300+71.83



**BENCHMARKS**

**BM #1 (WK2):** ON CENTERLINE OF 1' WIDE CONC. WALL, 1.23' FROM NW END ON N. SIDE BELVIDERE ROAD, BRIDGE DIRECTLY E. OF SHERIDAN RD., 5' NE. OF BACK OF CURB, 1.3' S. OF FENCE POST AT END OF FENCE, 6.4' SE. OF SIGNAL POST. ELEV. 628.74

**BM #2 (WK1):** COPPER DISK IN SE CORNER OF CONC. SIGNAL POST BASE AT SW CORNER OF SHERIDAN ROAD AND WASHINGTON STREET, 4.53' S. OF BACK OF CURB, 10.4' E. OF THE CENTERLINE OF TRAFFIC HANDHOLE, 10' NINE. OF POST OF "CITY OF WAUKEGAN" SIGN. ELEV. 636.82

**BM #3 (WK 107):** ALUMINUM DISK IN CITY VAULT AT SE CORNER SHERIDAN RD. & GRAND AVE. 5.7' NW. OF CENTERLINE "HAIG PARAVANIAN PARK" SIGN, 15.2' E. OF LIGHT POLE, 28.5' SSE. OF SIGNAL POST. ELEV. 633.86

REVISIONS		
NO.	ITEM	DATE

SCALE:	1" = 80'
DRAWN BY:	MRT
CHECKED BY:	DBD
DATE:	1-16-06

**McCLURE ENGINEERING ASSOCIATES, INC.**  
 2728 Grand Avenue  
 Waukegan, Illinois 60085  
 TEL 847-336-7101 FAX 847-336-7155  
 Design Firm License: Illinois #184-000818  
 Copyright 2004 by  
 McClure Engineering Associates, Inc.

**ALIGNMENT CURVE DATA AND BENCHMARKS**  
**SHERIDAN ROAD IMPROVEMENTS**  
 CITY OF WAUKEGAN JOB NUMBER: 02-28-04-164 LAKE COUNTY, ILLINOIS  
 W:\dwg\WK\SHERIDAN-RD\Sher-Striping.dwg 1/13/2006 1:19:09 PM CST