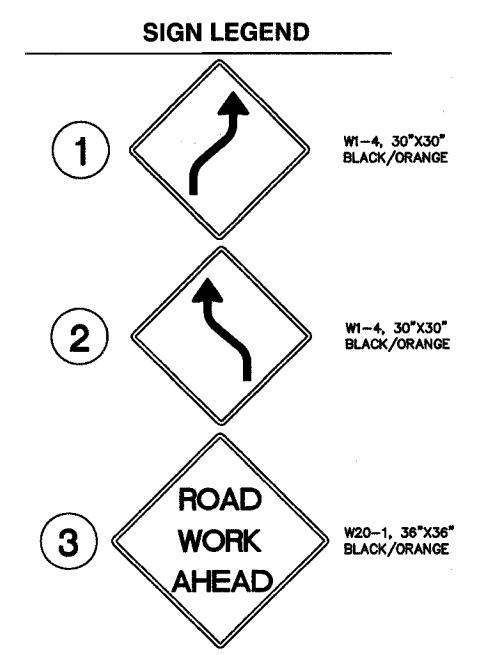
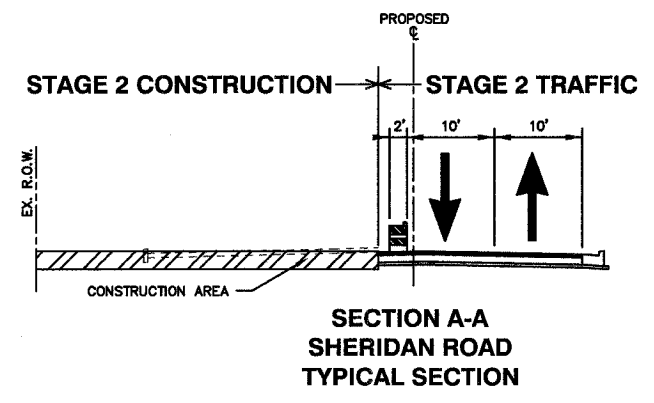
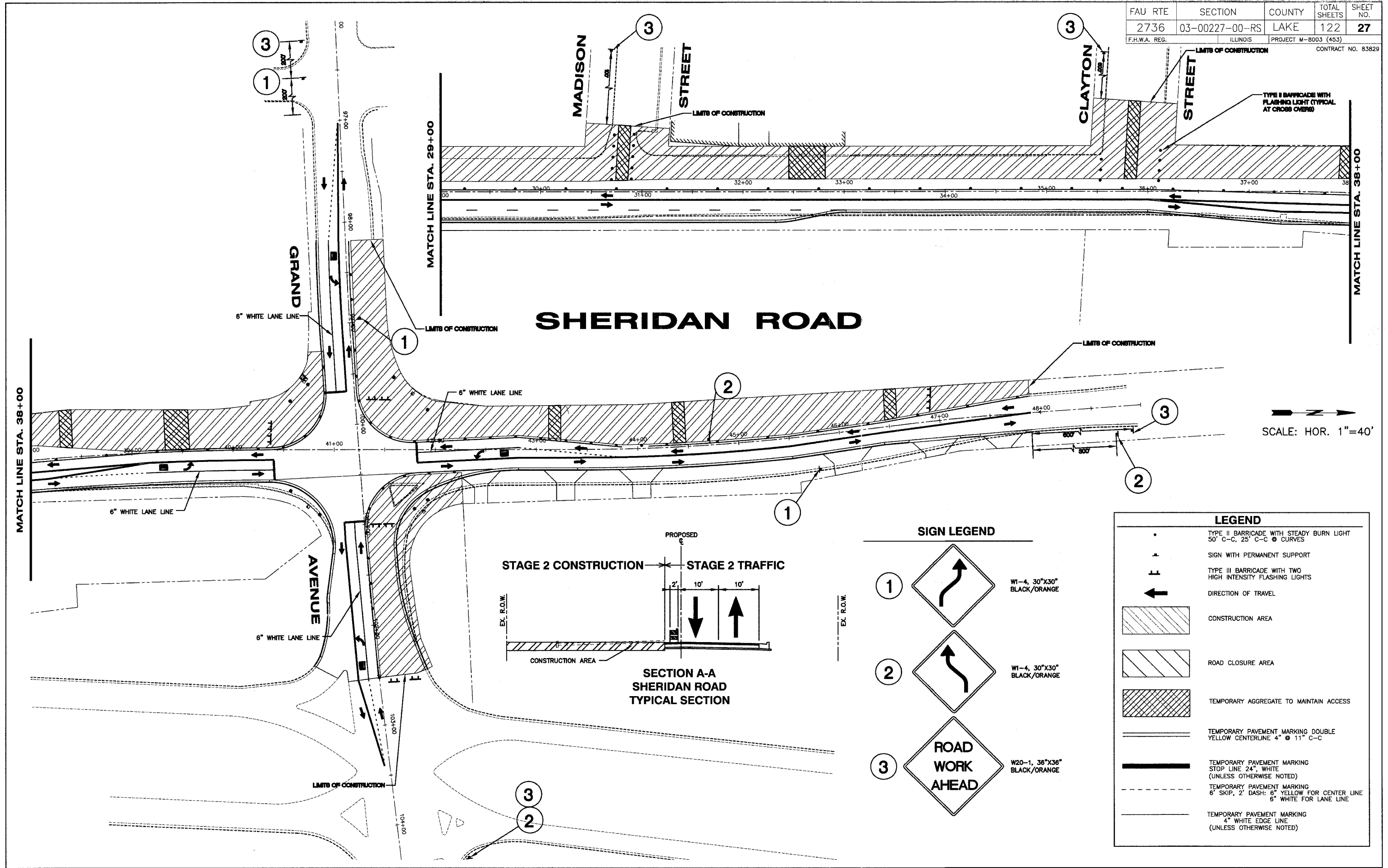


FAU RTE	SECTION	COUNTY	TOTAL SHEETS	SHEET NO.
2736	03-00227-00-RS	LAKE	122	27
F.H.W.A. REG.	ILLINOIS	PROJECT M-8003 (453)	CONTRACT NO. 83829	



LEGEND	
	TYPE II BARRICADE WITH STEADY BURN LIGHT 50' C-C, 25' C-C @ CURVES
	SIGN WITH PERMANENT SUPPORT
	TYPE III BARRICADE WITH TWO HIGH INTENSITY FLASHING LIGHTS
	DIRECTION OF TRAVEL
	CONSTRUCTION AREA
	ROAD CLOSURE AREA
	TEMPORARY AGGREGATE TO MAINTAIN ACCESS
	TEMPORARY PAVEMENT MARKING DOUBLE YELLOW CENTERLINE 4" @ 11" C-C
	TEMPORARY PAVEMENT MARKING STOP LINE 24" WHITE (UNLESS OTHERWISE NOTED)
	TEMPORARY PAVEMENT MARKING 6" SKIP, 2" DASH: 6" YELLOW FOR CENTER LINE 6" WHITE FOR LANE LINE
	TEMPORARY PAVEMENT MARKING 4" WHITE EDGE LINE (UNLESS OTHERWISE NOTED)

SHEET KEY	

REVISIONS		
NO.	ITEM	DATE

SCALE: 1" = 40'
 DRAWN BY: MRT
 CHECKED BY: DBD
 DATE: 1-16-06

McCLURE ENGINEERING ASSOCIATES, INC.
 2728 Grand Ave. Waukegan, IL 60085
 TEL 847-336-7100 FAX 847-336-7105
 EMAIL: wi@mcclureengineering.com
 Design Firm License: Illinois #184-000816
 Copyright 2004 by McClure Engineering Associates, Inc.

SHERIDAN ROAD STAGE 2 TRAFFIC PLAN
SHERIDAN ROAD IMPROVEMENTS
 CITY OF WAUKEGAN JOB NUMBER: 02-28-04-164 LAKE COUNTY, ILLINOIS
 W:\dwg\WK\SHERIDAN-RD\Sher-TrafficControl.dwg 8/26/2005 1:17:23 PM CDT