

A 6" wide 5" thick Portland Cement Concrete border shall be constructed to frame the proposed tree grates. This work shall be in accordance with Section 424 of the Standard Specifications of Road and Bridge Construction and shall be paid for at the contract unit price per square foot for PORTLAND CEMENT CONCRETE SIDEWALK.

GENERAL PLANTING NOTES

Slope all planting areas away from building at 2% minimum grade.

Finish grade shall be 4" minimum below building finish floor elevation (adjacent to building slabs). All areas shall be received by contractor at +/- 0.1 foot to finish grade.

Finish grade shall be 1" below finish paving surface in lawn areas and 2" in shrub areas.

Plant quantities shown on drawings are for contractor's convenience in estimating only. Contractor is responsible for providing plant materials sufficient to cover areas shown on plans at the spacings indicated.

At least one plant of each species delivered to the site will have an identification tag from the supplying nursery showing common and botanical plant names. All plants shall be protected against heat, sun, wind and frost during transportation to the site and while being held at the site. Do not store plants in total darkness more than one day.

Do not damage plant root ball during transportation or planting.

Contractor shall notify the AOR at the time of delivery of any plant material that is damaged or in poor condition to determine acceptability.

Plant materials shall be inspected by the AOR before planting. Material may be rejected at any time due to condition, form or damage before or after planting.

All rock and debris 1" and larger shall be removed from planting areas and then from the site.

The contractor shall coordinate this work with the other trades and maintain drainage during construction.

Install all plant material in accordance with details. All finish grading and planting operations shall be carried out in accordance with project specifications.

All plant tying material and marking tapes shall be removed at the time of planting.

The planting plans are diagrammatic. Plant materials shall be spotted approximately as shown on the landscape drawing and are to be approved by the AOR before being removed from containers and excavating soil for planting.

All trees shall be single trunk standards unless otherwise noted.

Contractor shall install a min 3" layer of hardwood bark mulch (see specs.) around all trees and in all groundcover / shrub areas. Create a natural spaded edge where planting beds meet turf areas.

Contractor shall protect existing vegetation outside the limits of grading.

Any existing landscape indicated on the approved plans that is damaged or removed during demolition or construction shall be repaired and/or replaced in kind and equivalent size per the approved plans.

Following construction, re-seed all disturbed areas as required.

Provide wire ties and guys of 2-strand, twisted, pliable galvanized iron wire, not lighter than 12 gage with zinc-coated turnbuckles. Provided not less than 1/2" diameter rubber or plastic hose, cut to required lengths and of uniform color, material, and size to protect tree trunks from damage by wires.

Contractor to guy and stake trees, as directed by AOR, immediately after planting. Provide a minimum of two guy wires per tree on the uphill side of trees planted on slopes steeper than 3:1.

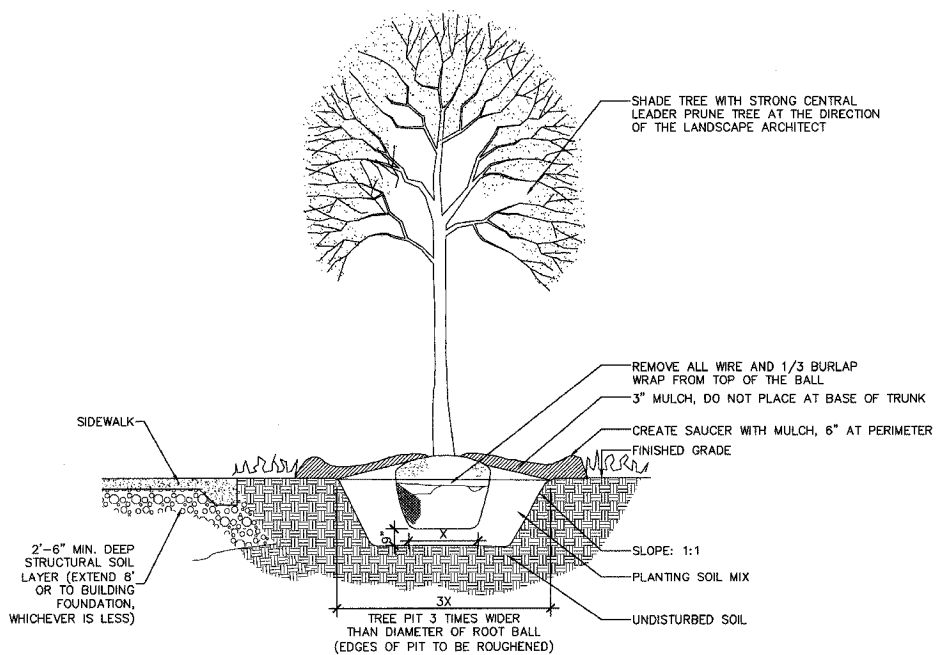
Contractor to warrant all trees and shrubs against death and defects including unsatisfactory growth, except for defects resulting from neglect by owner, abuse or damage by others or unusual phenomenon or incidents which are beyond the contractor's control (see specs.).

Provide new topsoil that is fertile, friable and natural loam surface soil, reasonably free of subsoil, clay, clay lumps, brush, weeds, and other litter and free of roots, stumps, stones larger than 2" in any dimension and other extraneous or toxic matter harmful to plant growth. Obtain topsoil from local sources or from areas having similar soil characteristics to that necessary for vigorous growth of specified plantings. Obtain topsoil that occurs in a depth of not less than 4". Do not obtain soil from bogs or marshes.

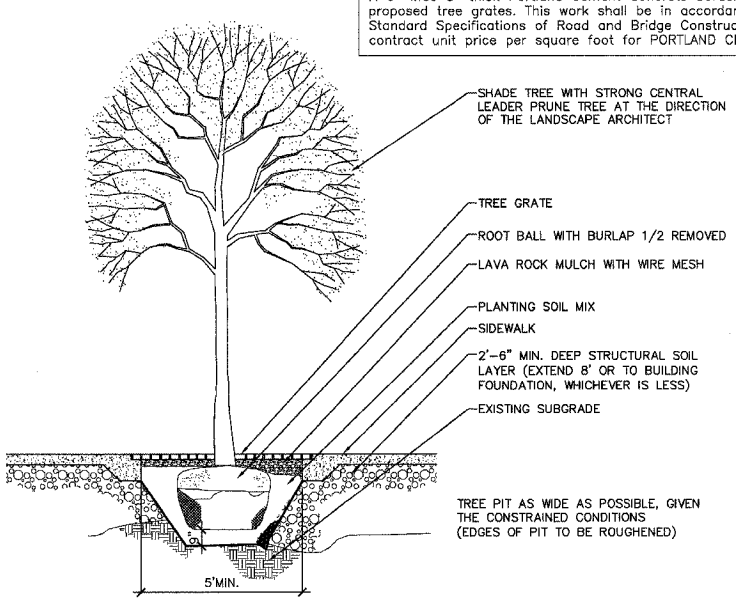
Mix specified soil amendments and fertilizers with topsoil on a site specific basis at rates appropriate for area trees and shrubs.

Protect seeded areas and slopes against erosion and seed loss due to birds and other wildlife by applying short term, biodegradable erosion control blankets, mats, and/or netting after completion of seeding operations. Adhere to manufacturer's specifications for required placement and staking.

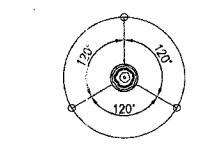
Remove CA-6 to an adequate depth to ensure that no part of the plant material is in contact or affected by the lime in the CA-6 as approved by the AOR.



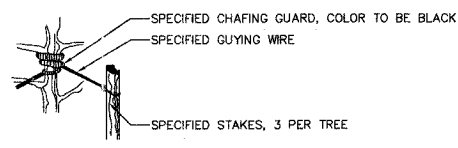
1 TREE IN PARKWAY INSTALLATION
NOT TO SCALE



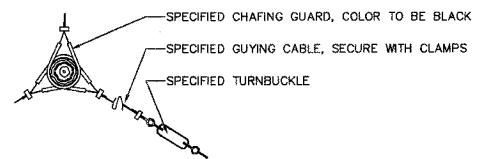
2 TREE IN GRATE INSTALLATION
NOT TO SCALE



3 STAKING & GUYING PLAN
NOT TO SCALE

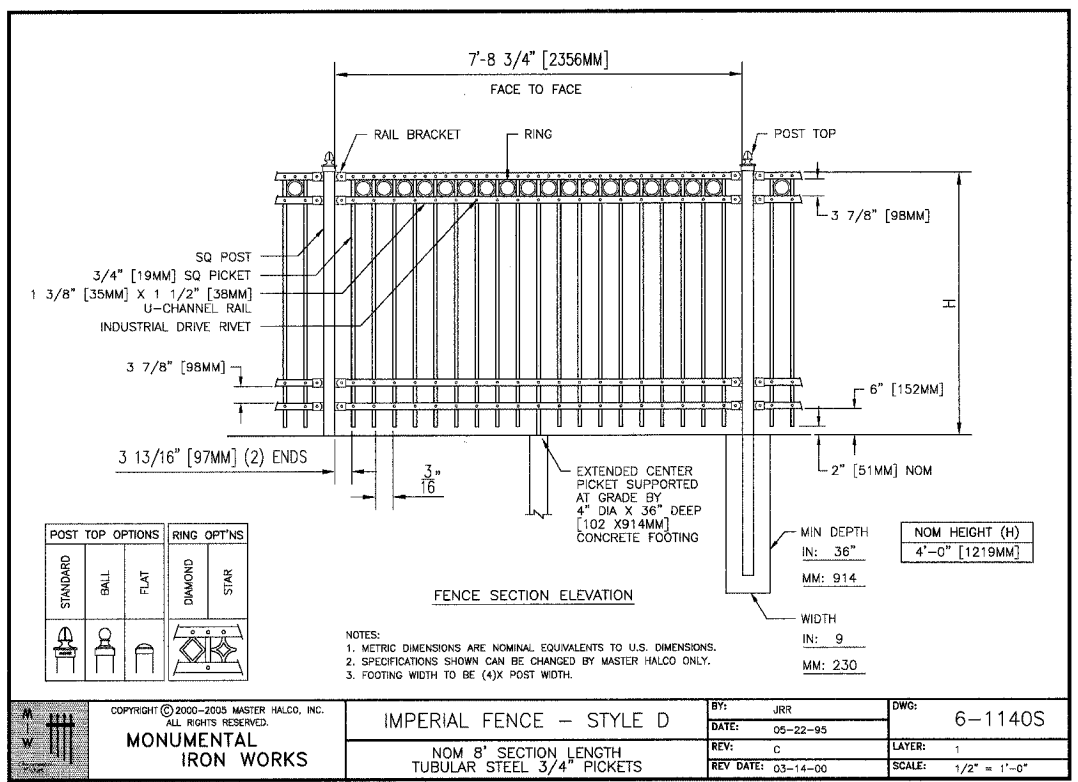


4 STAKING DETAIL
NOT TO SCALE



5 GUYING DETAIL
NOT TO SCALE

STREET TREE PLANT SCHEDULE						
CODE	QJAN	BOTANICAL NAME	COMMON NAME	SIZE	ROOT	REMARKS
AF	71	Acer x Freemanii Sienna Glen	Sienna Glen Red Maple	2.5" cal.	B&B	matching heads
GT	71	Gleditsia triacanthos var. inermis Skyline	Skyline Thornless Honeylocust	3" cal.	B&B	matching heads
QI	50	Quercus imbricaria	Shingle Oak	2.5" cal.	B&B	matching heads
SR	19	Syringa reticulata 'Ivory Silk'	Ivory Silk Japanese Tree Lilac	2.5" cal.	B&B	matching heads
TA	81	Tilia americana 'Redmond'	Redmond American Linden	3" cal.	B&B	matching heads
UA	28	Ulmus Accolade	Accolade Elm	2.5" cal.	B&B	matching heads



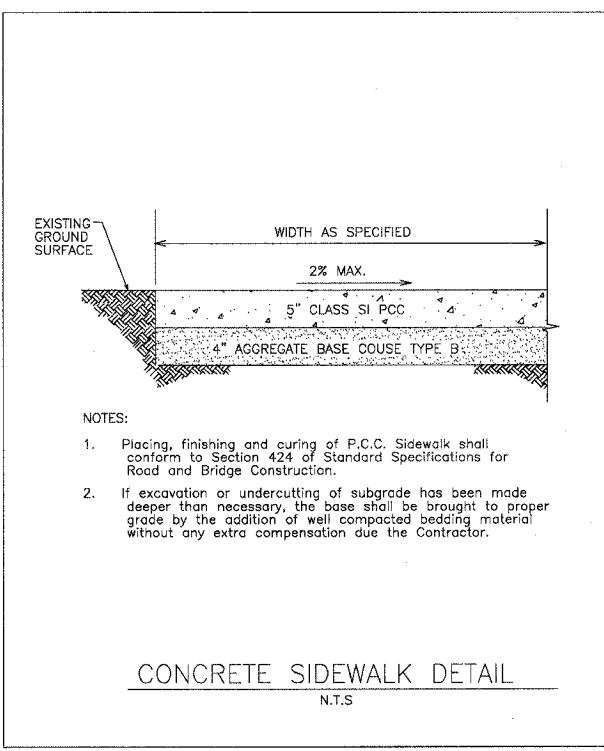
NOTES:
1. METRIC DIMENSIONS ARE NOMINAL EQUIVALENTS TO U.S. DIMENSIONS.
2. SPECIFICATIONS SHOWN CAN BE CHANGED BY MASTER HALCO ONLY.
3. FOOTING WIDTH TO BE (4)X POST WIDTH.

POST TOP OPTIONS		RING OPT'NS	
STANDARD	BALL	FLAT	DIAMOND
STAR			

IMPERIAL FENCE - STYLE D
NOM 8' SECTION LENGTH
TUBULAR STEEL 3/4" PICKETS

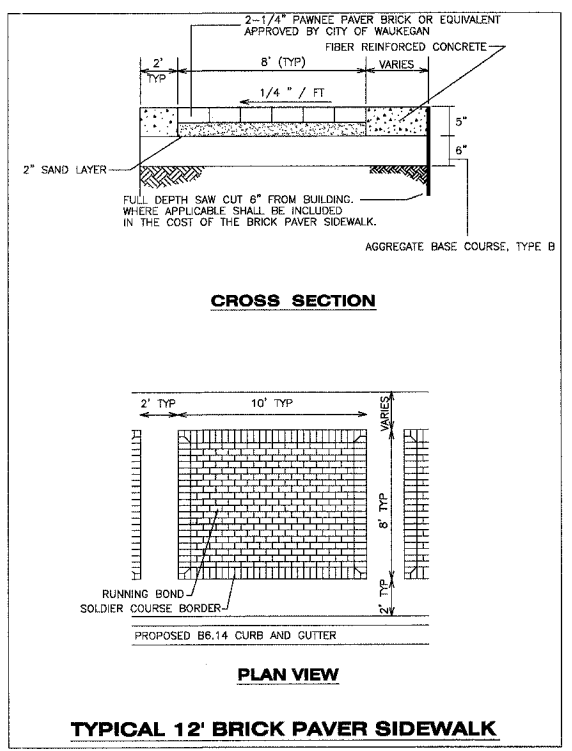
BY: JRR
DATE: 05-22-95
REV: C
REV DATE: 03-14-00

DWG: 6-1140S
LAYER: 1
SCALE: 1/2" = 1'-0"

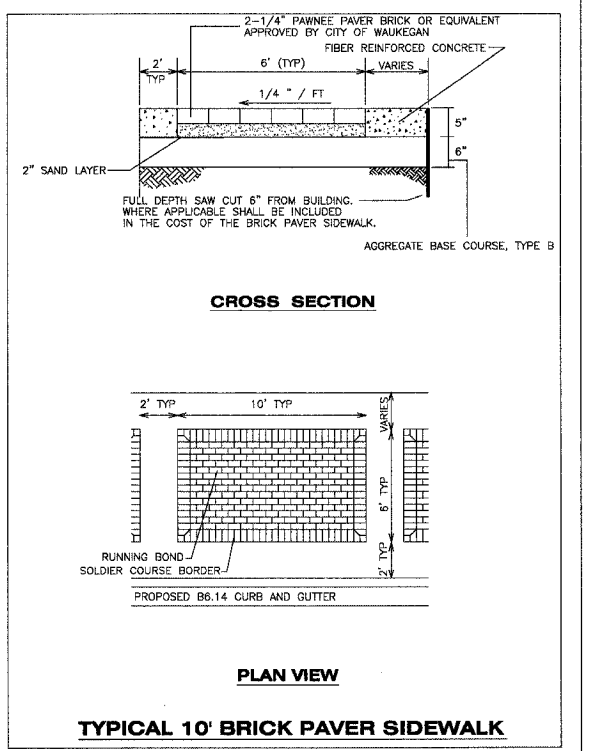


NOTES:
1. Placing, finishing and curing of P.C.C. Sidewalk shall conform to Section 424 of Standard Specifications for Road and Bridge Construction.
2. If excavation or undercutting of subgrade has been made deeper than necessary, the base shall be brought to proper grade by the addition of well compacted bedding material without any extra compensation due the Contractor.

CONCRETE SIDEWALK DETAIL
N.T.S



TYPICAL 12' BRICK PAVER SIDEWALK



TYPICAL 10' BRICK PAVER SIDEWALK

REVISIONS		
NO.	ITEM	DATE

SCALE:	NTS
DRAWN BY:	NJB
CHECKED BY:	DBD
DATE:	1-16-06

McCLURE ENGINEERING ASSOCIATES, INC.
2728 Grand Avenue
Waukegan, Illinois 60085
TEL 847-336-7100 FAX 847-336-7155
Design Firm License: Illinois #184-000816
Copyright 2005 by McClure Engineering Associates, Inc.

STREETSCAPE DETAILS AND LANDSCAPE NOTES
SHERIDAN ROAD IMPROVEMENTS
CITY OF WAUKEGAN
JOB NUMBER: 02-28-04-164
LAKE COUNTY, ILLINOIS
W:\dvg\W\K\SHERIDAN-RD\Sher-LndscErosion.dwg 8/26/2005 2:22:44 PM CDT