

# STATE OF ILLINOIS DEPARTMENT OF TRANSPORTATION DIVISION OF HIGHWAYS PLANS FOR PROPOSED FEDERAL AID HIGHWAY

F.A.P. RTE.	SECTION	COUNTY	TOTAL SHEETS	SHEET NO.
07-00087-00-RS	07-00087-00-RS	COOK	10	1
FED. ROAD DIST. NO. 1 ILLINOIS		HIGH PRIORITY PROJECT		

CONTRACT NO. 83915

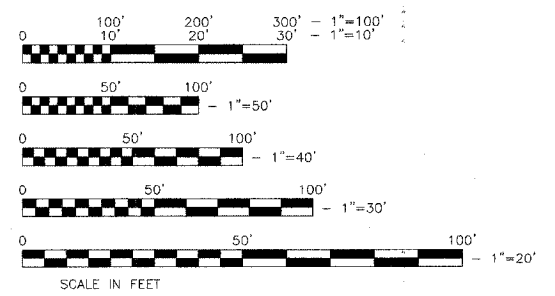
INDEX OF SHEETS

1	COVER SHEET
2	LEGEND, SUMMARY OF QUANTITIES AND GENERAL NOTES
3	TYPICAL SECTIONS
4-7	PLAN SHEETS
8	PAVEMENT MARKING PLAN
9	STANDARDS AND DETAILS
10	PAVEMENT PATCHING FOR HMA SURFACED PAVEMENT

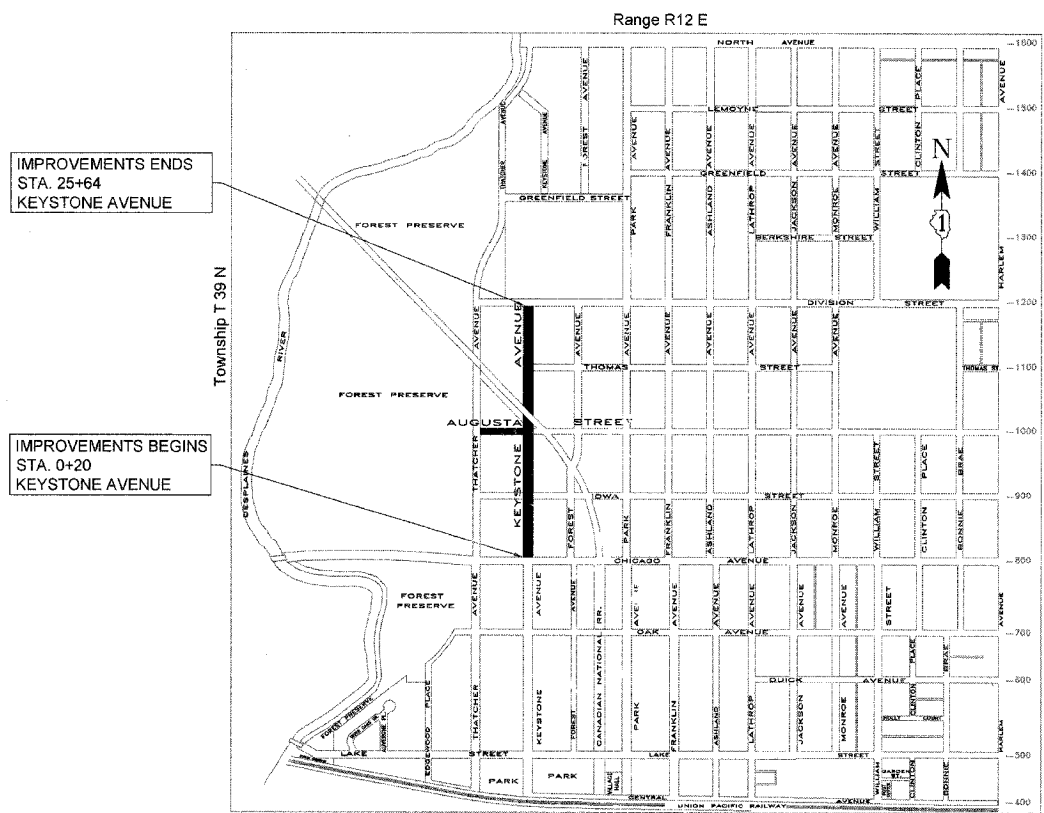
HIGHWAY STANDARDS

000001-04	STANDARD SYMBOLS ABBRIAVIATIONS AND PATERNS
424001-04	CURB RAMPS FOR SIDEWALKS
442201-02	CLASS C AND D PATCHES
606001-03	CONCRETE CURB TYPE B AND COMBINATION CONCRETE CURB AND GUTTER
701501-03	URBAN LANE CLOSURE 2L, 2W UNDIVIDED
701701-04	URBAN LANE CLOSURE MULTILANE INTERSECTION
701801-03	LANE CLOSURE MULTILANE 1W OR 2W CROSSWALK OR SIDEWALK CLOSURE
702001-06	TRAFFIC CONTROL DEVICES
780001-01	TYPICAL PAVEMENT MARKINGS
B.L.R. 17-3	TRAFFIC CONTROL DEVICES DAY LABOR CONSTRUCTION
B.L.R. 22-4	TRAFFIC CONTROL DEVICES CONSTRUCTION ON RURAL OR LOCAL HIGHWAYS
602301-01	INLET TYPE A
604001-02	FRAME AND LIDS TYPE 1

TRAFFIC DATA  
 KEYSTONE AVENUE  
 ADT = 2318  
 DESIGN DESIGNATION: LOCAL STREET  
 AUGUSTA STREET  
 ADT = 493  
 DESIGN DESIGNATION: LOCAL STREET  
POSTED SPEED  
 25 M.P.H.



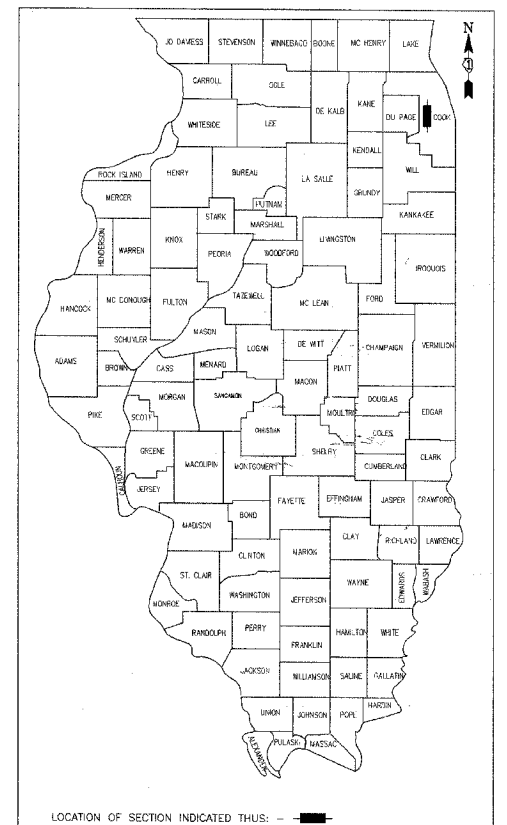
## KEYSTONE AVENUE FROM CHICAGO AVENUE TO DIVISION STREET AUGUSTA STREET FROM THATCHER AVENUE TO KEYSTONE AVENUE SECTION NO. 07-00087-00-RS PROJECT NO. HPP-4065(002) JOB NO. C-91-158-07 VILLAGE OF RIVER FOREST, COOK COUNTY



IMPROVEMENTS ENDS  
STA. 25+64  
KEYSTONE AVENUE

IMPROVEMENTS BEGINS  
STA. 0+20  
KEYSTONE AVENUE

LENGTH OF IMPROVEMENTS  
 GROSS PROJECT LENGTH (KEYSTONE AVENUE) = 2544 FEET = 0.48 MILES  
 NET PROJECT LENGTH (KEYSTONE AVENUE) = 2520 FEET  
 GROSS AND NET PROJECT LENGTH (AUGUSTA STREET) = 500 FEET = 0.095 MILES



GREGORY W. KRAMER  
 ILLINOIS REGISTERED PROFESSIONAL ENGINEER  
 NO. 062-046597 EXPIRATION DATE: 11/30/07

STATE OF ILLINOIS  
 DEPARTMENT OF TRANSPORTATION  
 DIVISION OF HIGHWAYS

APPROVED FEBRUARY 23, 2007  
*Gregory W. Kramer*  
 DIRECTOR OF PUBLIC WORKS, VILLAGE OF RIVER FOREST

PASSED APRIL 10, 2007  
*Cheryl A. ...*  
 REGION ONE ENGINEER OF LOCALS ROADS & STREETS

RELEASING FOR  
 BID BASED ON  
 LIMITED REVIEW APRIL 12, 2007  
*Don O.K.*  
 DEPUTY DIRECTOR OF HIGHWAYS, REGION ONE ENGINEER

PRINTED BY AUTHORITY OF THE STATE OF ILLINOIS

VILLAGE OF RIVER FOREST  
 ENGINEERING DEPARTMENT  
 400 PARK AVE.  
 RIVER FOREST, IL 60305  
 (630) 366-8500 FAX (630) 366-3702

SUMMARY OF QUANTITIES

F.A.P. R.T.E.	SECTION	COUNTY	TOTAL SHEETS	SHEET NO.
07-00087-00-RS	COOK	ILLINOIS	10	2
FED. ROAD DIST. NO. 1 HIGH PRIORITY PROJECT				
CONTRACT NO. 83915				

CODE NO	ITEM	UNIT	TOTAL QUANTITY
20800150	TRENCH BACKFILL	CU YD	1.5
21101610	TOPSOIL FURNISH AND PLACE, 3"	SQ YD	65
25200110	SODDING, SALT TOLERANT	SQ YD	65
25200200	SUPPLEMENTAL WATERING	UNIT	14
31101000	SUB-BASE GRANULAR MATERIAL, TYPE B	TON	28
40600100	BITUMINOUS MATERIALS (PRIME COAT)	GAL	960
40603310	HOT-MIX ASPHALT SURFACE COURSE, MIX "C", N50	TON	822
42400200	PORTLAND CEMENT CONCRETE SIDEWALK 5 INCH	SQ FT	300
42400800	DETECTABLE WARNINGS	SQ FT	24
44000158	HOT-MIX ASPHALT SURFACE REMOVAL, 2 1/4"	SQ YD	9530
44000500	COMBINATION CURB AND GUTTER REMOVAL	FOOT	145
44000600	SIDEWALK REMOVAL	SQ FT	300
550A0030	STORM SEWERS, CLASS A, TYPE 1 8"	FOOT	3
60234500	INLETS, TYPE A, TYPE 1 FRAME, OPEN LID (24" DEPTH)	EACH	1
60300310	FRAMES AND LIDS TO BE ADJUSTED (SPECIAL)	EACH	15
60406000	FRAMES AND LIDS, TYPE 1, OPEN LID	EACH	1
60406100	FRAMES AND LIDS, TYPE 1, CLOSED LID	EACH	1
60500060	REMOVING INLETS	EACH	1
60604100	COMBINATION CONCRETE CURB AND GUTTER, TYPE B-6.12 (MODIFIED)	FOOT	145
67100100	MOBILIZATION	L SUM	1
70102620	TRAFFIC CONTROL AND PROTECTION, STANDARD 701501	L SUM	1
70102635	TRAFFIC CONTROL AND PROTECTION, STANDARD 701701	L SUM	1
70102640	TRAFFIC CONTROL AND PROTECTION, STANDARD 701801	L SUM	1
*78000100	THERMOPLASTIC PAVEMENT MARKING - LETTERS AND SYMBOLS	SQ FT	14.4
*78000200	THERMOPLASTIC PAVEMENT MARKING - LINE 4"	FOOT	320
*78000600	THERMOPLASTIC PAVEMENT MARKING - LINE 12"	FOOT	118
*78000610	THERMOPLASTIC PAVEMENT MARKING - LINE 16"	FOOT	88
X4067107	POLYMERIZED LEVELING BINDER (MACHINE METHOD), IL-4.75, N50	TON	401
XX006392	CLASS D PATCHES, 6" (SPECIAL)	SQ YD	475
Z0019600	DUST CONTROL WATERING	UNIT	14
Z0062000	SAWCUTTING	FOOT	145

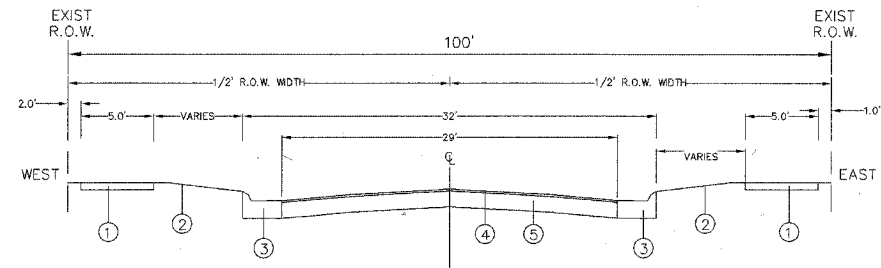
\* INDICATES SPECIALITY ITEMS

EXISTING	LEGEND	PROPOSED
	SPOT ELEVATION CONTOUR	
	COMBINED SEWER	
	STORM SEWER	
	SILT FENCE	
	TREE	
	MANHOLE	
	DRAINAGE FLOW	
	FIRE HYDRANT	
	BUFFALO BOX	
	FENCE	
	BUILDING	
	FLOW DIRECTION	
	SPOT GRADE	
	DOWN SPOUT	
	CABLE T.V.	
	ABANDON EXISTING SEWER (PLUG)	
	ABANDON EXISTING WATER	
	CENTER LINE	
	R.O.W. LINE	
	LEFT E.O.P.	
	RIGHT E.O.P.	
	WATER MAIN	
	GAS MAIN	
	TELEPHONE CABLE	
	STREET LIGHT CABLE	
	COMMONWEALTH EDDISON LINE	
	CATCH BASIN	
	INLET	
	VALVE VAULT	
	DOMESTIC WATER SERVICE	
	VALVE BOX	
	STREET LIGHT POLE	
	ELECTRIC POLE	
	ELECTRIC HAND HOLE	
	GAS BOX	
	STRUCTURES TO BE REMOVED	
	CONC. REMOVAL & REPLACEMENT	
	REMOVAL & REPLACE STRUCTURE	
	ADJUST FRAME	
	FILL STRUCTURES	
	RECONSTRUCT	
	HOUSE ADDRESS	

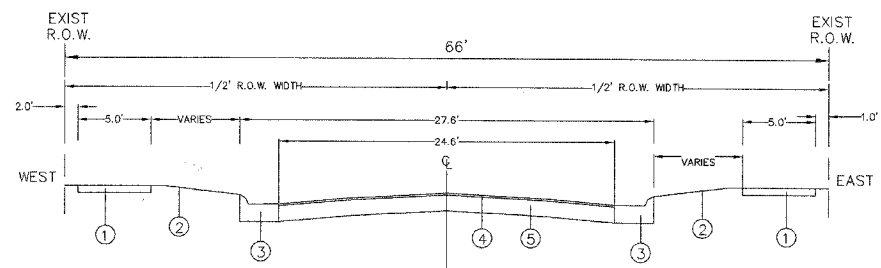
Plan Notes

- Pipe Connection to Manholes** - A structural grade concrete or grout with minimum 28 day compressive strength of 3,000 psi shall be used. Existing reinforcement shall be bent into new concrete. The surface of the exposed concrete shall be sound, free from loose debris, brushed and coated with suitable bonding compound.
- Top of Curb Elevations** - Before setting the top of curb elevations, the engineer shall check the existing elevations at the adjacent property line, and if necessary, the Contractor is required to vary the curb exposure and/or gutter elevations in order to more closely follow the proper line grades. The proposed curb exposure shall vary in height from 6 inches (MAX.) to 4 inches (MIN.)
- Earth Excavations** - Except as noted in the special provisions, earth excavation which is necessary for the construction of proposed combination concrete curb and gutter, driveway pavement, sidewalk, street return radius and alley return adjustments shall be considered incidental to their respective pay items of removal and no additional compensation will be paid.
- Street Returns** - A 20 feet radius shall be used on all intersecting street returns unless indicated otherwise.
- Existing Utilities** - Contractor must notify companies for locations prior to commencement of work. Existing utilities shall be maintained in service at all times. Utilities and obstructions shown on the plans were derived from the best possible information through contacts made with various utilities and agencies known to have structures in the area. The location, material and dimensions of existing obstructions are based upon available records, and are shown on the plans and profile strictly as an aid to the Contractor, but must not be construed as being accurate, correct or complete. All structures above and below ground that are encountered during construction shall be properly supported and maintained. The Contractor shall make all arrangements with the Owner of such structures for shifting, support, temporary relocation and for protection where necessary. If damaged during construction, the Contractor shall make or pay to have made all repairs to the structure to the satisfaction of the Owner of the structure. No extra payment shall be made for such interferences or obstructions.
- Utility locations:** The Contractor shall contact Julie (800) 892-0123, and the Village of River Forest Department of Public Works (708) 366-8500 for utility locations prior to commencing construction. A joint July locate meeting is required. The Contractor shall notify all utility companies prior to construction to verify in the field all existing utilities and shall be responsible for protection of same. Contractor must exercise caution while working around existing utilities and existing trees in the area.
- Access/Resident Control:** The Contractor shall not close any street or private driveway without consent of the Engineer, and the proper notification of the affected resident(s) in the event the Engineer deems it necessary to close any driveways or streets, the Engineer shall made the necessary arrangements with the property owners, Police Department (708) 366-7125, and Fire Department (708) 366-7629.
- Use of fire hydrant:** No fire hydrant shall be used to obtain water unless a hydrant use permit is obtained. Permit application can be obtained at the Village of River Forest, Department of Public Works, 400 Park Avenue, River Forest, Illinois 60305 (708-366-8500).
- Notification of Work:** The Contractor shall notify the Village of River Forest at least 48 hours prior to initial start of operations, and also prior to any temporary cessation and resumption of operations, and 24 hours prior to each inspection at (708-366-8500).
- Service connections for existing utilities** (gas, water and sanitary sewer) are not shown on the drawings. Contractor shall assume service connections cross street opposite from utility location indicated on drawings and shall take care not to disturb them.
- Utility service** (i.e., combined sewer, storm sewer, water main, gas, telephone, electric cable TV) are generally shown on the drawings but may not be complete. Contractor shall maintain all utility services and repair any damage resulting from construction operations.

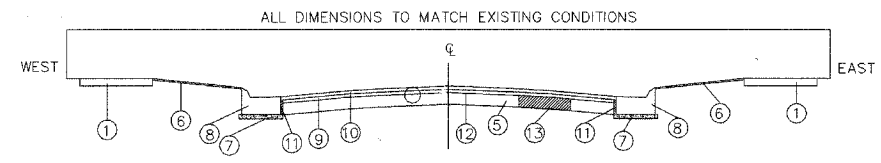
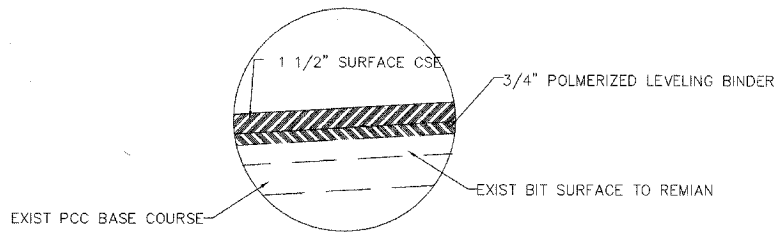
<b>REVISIONS</b> DATE BY DESCRIPTION DATE BY DESCRIPTION						DESIGNED: TJT DRAFTED: TJT CHECKED: GWK APPROVED: GWK DATE 12/28/06	<b>VILLAGE OF RIVER FOREST</b> ENGINEERING DEPARTMENT 400 PARK AVE. RIVER FOREST, IL 60305 (708) 366-8500	TITLE: KEYSTONE AVENUE AND AUGUSTA STREET RESURFACING IMPROVEMENTS LEGEND, SUMMARY OF QUANTITIES AND GENERAL NOTES SECTION NO: 07-00083-00-RS	SCALE NONE DATE 12/28/2006 PROJ. NO 4065 SHEET 2 OF 10
(Empty revision table)									



**KEYSTONE AVENUE  
EXISTING TYPICAL SECTION**  
STA: 0+20 TO STA 25+64

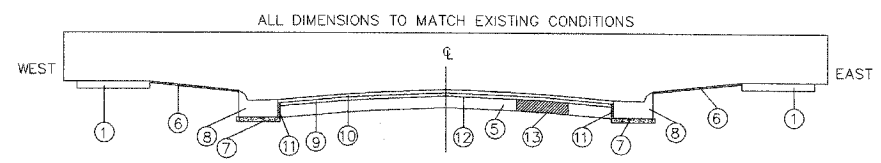


**AUGUSTA STREET  
EXISTING TYPICAL SECTION**  
STA: 0+00 TO STA 5+00



**KEYSTONE AVENUE  
PROPOSED TYPICAL SECTION**  
STA: 0+20 TO STA 25+64

NOT TO SCALE



**AUGUSTA STREET  
PROPOSED TYPICAL SECTION**  
STA: 0+00 TO STA 5+00

NOT TO SCALE

**LEGEND**

1. EXISTING P.C.C. SIDEWALK
2. EXISTING PARKWAY
3. EXISTING COMBINATION CONCRETE CURB AND GUTTER B-6.12
4. EXISTING HOT MIX ASPHALT SURFACE COURSE VARIABLE THICKNESS
5. EXISTING PCC BASE COURSE.
6. PROPOSED TOPSOIL PLACEMENT AND SODDING AT LOCATIONS C&G REPLACEMENT.
7. PROPOSED SUB-BASE GRANULAR MATERIAL TYPE B
8. PROPOSED COMBINATION CONCRETE CURB AND GUTTER, TYPE B-6.12 AT DESIGNATED LOACTION BY ENGINEER
9. PROPOSED POLYMERIZED LEVELING BINDER, SUPERPAVE, MIX IL-4.75, 0.75"
10. PROPOSED HOT-MIX ASPHALT SURFACE COURSE, MIX "C", N50, 1.5"
11. PROPOSED PCC BASE COURSE 8", WIDTH AS REQUIRED (INCIDENTAL TO COMB. CURB AND GUTTER)
12. PROPOSED BITUMINOUS MATERIALS (PRIME COAT)
13. PROPOSED CLASS D PATCHES, 3 INCHES (SPECIAL)

**HOT MIX ASPHALT MIXTURE REQUIREMENTS**

ITEM	AC TYPE	VOIDS
HOT MIX ASPHALT SURFACE COURSE, MIX C, N50, IL-9.5 MM	PG 64-22	4% @ 50 GYR
POLYMERIZED LEVELING BINDER (MACHINE METHOD), IL-4.75, N50	SBS/SBR PG 76-28/22	4% @ 50 GYR
CLASS D PATCHES, 8 INCHES (SPECIAL) BINDER IL-19 MM	PG 64-22 58-22	4% @ 70 GYR

- NOTES:
1. THE UNIT WEIGHT USED TO CALCULATE ALL BITUMINOUS SURFACE MIXTURE QUANTITIES IS 112 LBS/SQYD/IN.
  2. WHEN RAP EXCEEDS 20%, THE NEW ASPHALT BINDER IN THE MIX SHALL BE PG 58-22.

REVISIONS					
DATE	BY	DESCRIPTION	DATE	BY	DESCRIPTION

DESIGNED: TJT
DRAFTED: TJT
CHECKED: GWK
APPROVED: GWK DATE 12/28/06

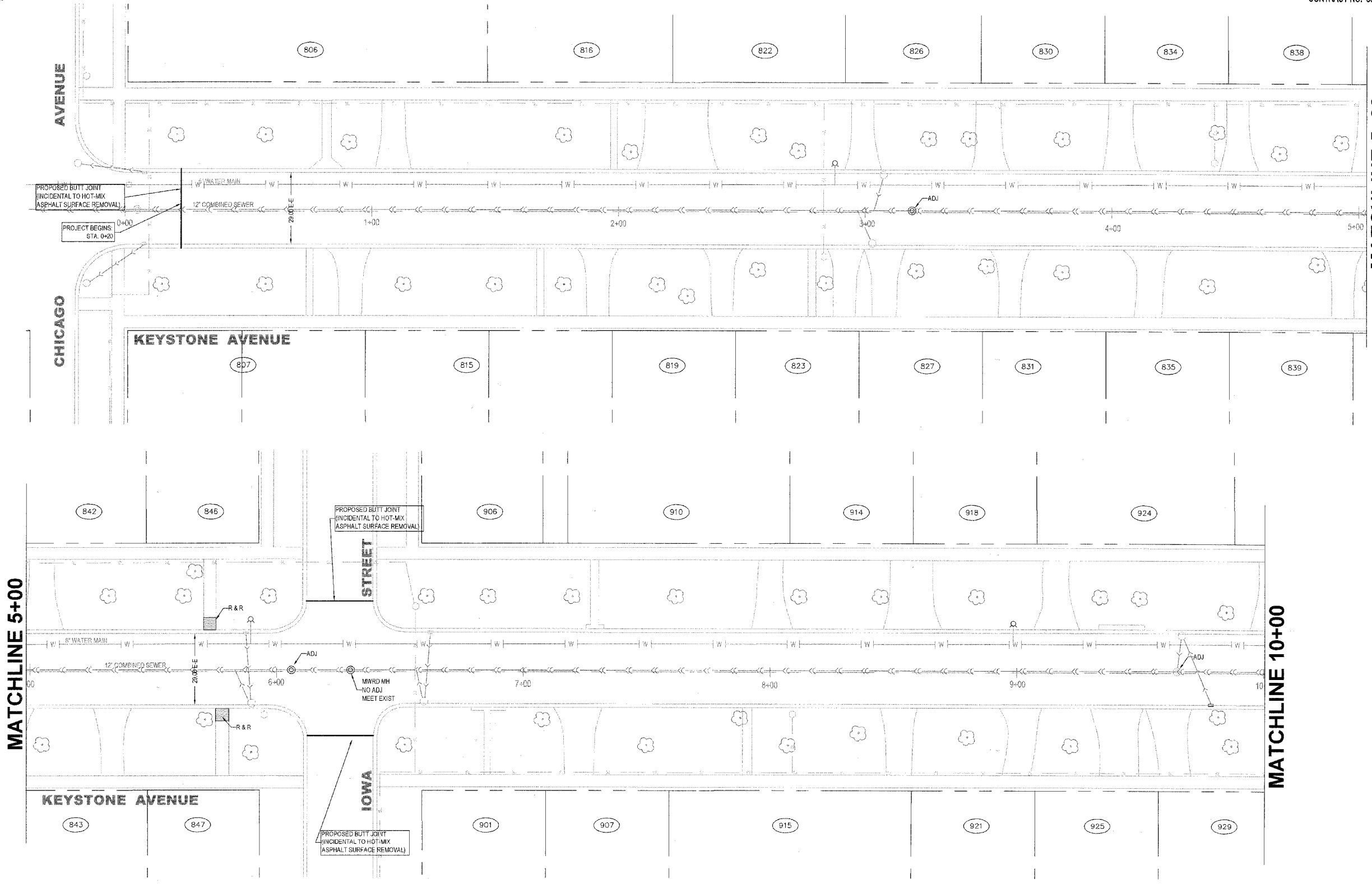


TITLE:  
KEYSTONE AVENUE AND AUGUSTA STREET  
RESURFACING IMPROVEMENTS  
TYPICAL SECTIONS  
SECTION NO: 07-00083-00-RS



SCALE: NONE
DATE: 12/28/2006
PROJ. NO: 4065
SHEET: 3 OF 10

F.A.P. RTE.	SECTION	COUNTY	TOTAL SHEETS	SHEET NO.
07-00087-00-RS	COOK	ILLINOIS	10	4
FED. ROAD DIST. NO. 1 HIGH PRIORITY PROJECT				
CONTRACT NO. 83915				



REVISIONS					
DATE	BY	DESCRIPTION	DATE	BY	DESCRIPTION

DESIGNED:	TJT
DRAWN:	TJT
CHECKED:	GWK
APPROVED:	GWK
DATE:	12/28/06

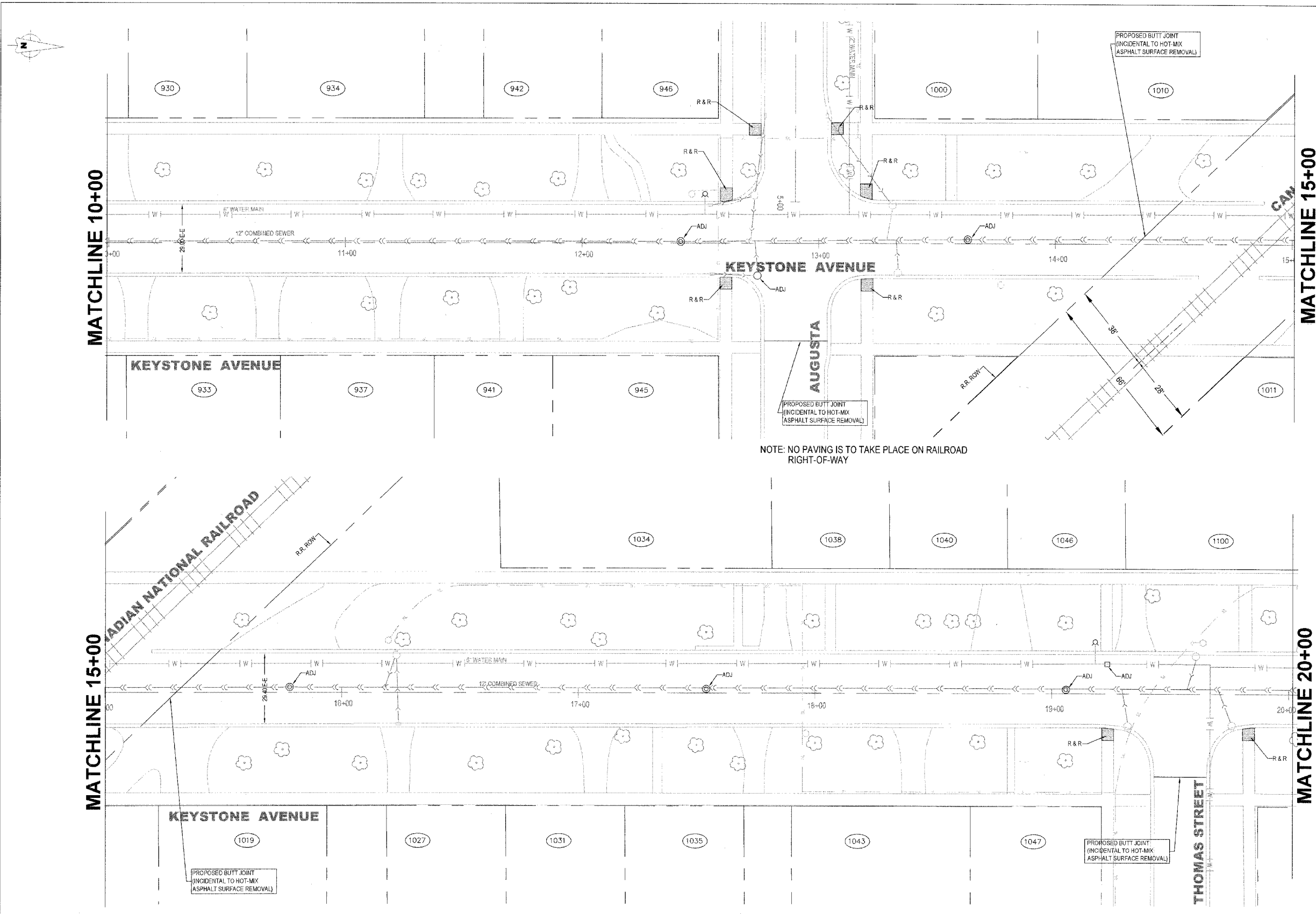
**VILLAGE OF RIVER FOREST**  
**ENGINEERING DEPARTMENT**  
**400 PARK AVE.**  
**RIVER FOREST, IL 60305**  
**(708) 366-8500**

TITLE:  
 KEYSTONE AVENUE AND AUGUSTA STREET  
 RESURFACING IMPROVEMENTS  
 PLAN  
 SECTION NO: 07-00083-00-RS



SCALE	1"=20'
DATE	12/28/2006
PROJ. NO.	4065
SHEET	4 OF 10

F.A.P. NO.	SECTION	COUNTY	TOTAL SHEET NO.
07-00087-CO-RS	COCK	10	5
FED. ROAD DIST. NO. 1	ILLINOIS	HIGH PRIORITY PROJECT	
CONTRACT NO. 83915			



MATCHLINE 10+00

MATCHLINE 15+00

MATCHLINE 15+00

MATCHLINE 20+00

NOTE: NO PAVING IS TO TAKE PLACE ON RAILROAD RIGHT-OF-WAY

REVISIONS					
DATE	BY	DESCRIPTION	DATE	BY	DESCRIPTION

DESIGNED	TJT
DRAFTED	TJT
CHECKED	GWK
APPROVED	GWK
DATE	12/26/06

**VILLAGE OF RIVER FOREST**  
**ENGINEERING DEPARTMENT**  
**400 PARK AVE.**  
**RIVER FOREST, IL 60305**  
**(708) 366-8500**

TITLE:  
 KEYSTONE AVENUE AND AUGUSTA STREET  
 RESURFACING IMPROVEMENTS  
 PLAN  
 SECTION NO: 07-00083-00-RS



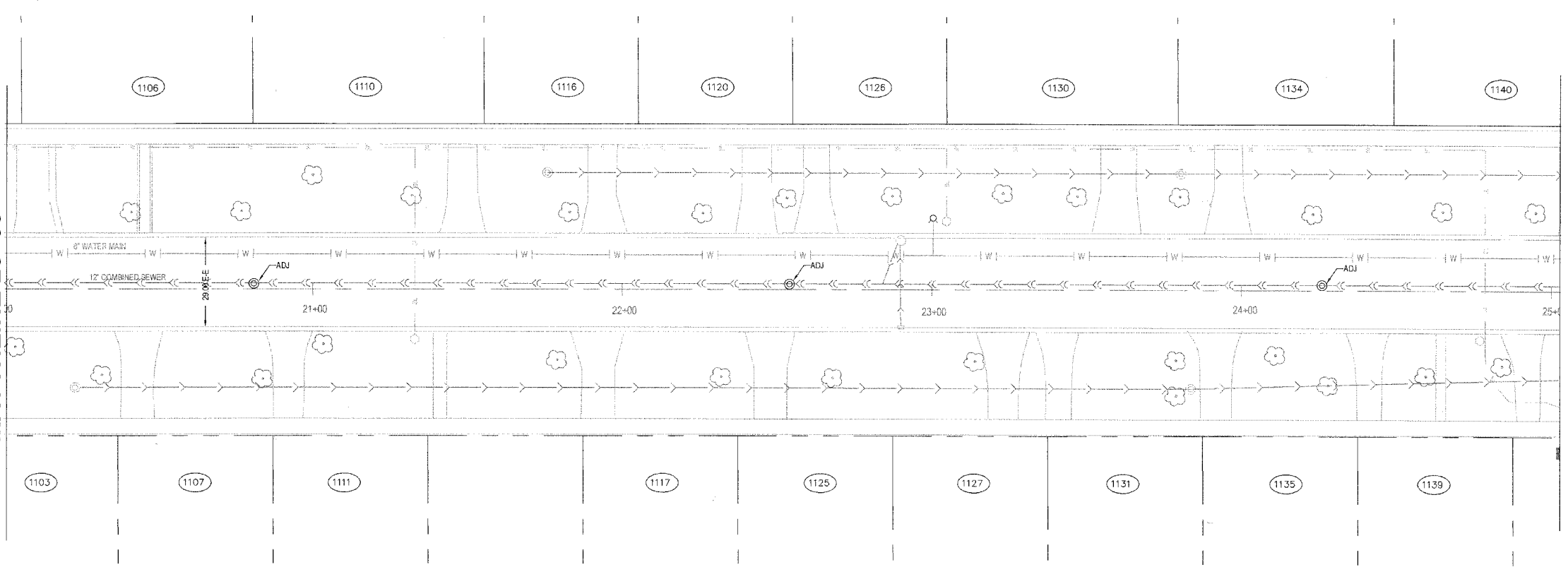
SCALE	1" = 20'
DATE	12/28/2006
PROJ. NO.	4065
SHEET	5 OF 10

F.A.P. SHEETS	SECTION	COUNTY	TOTAL SHEETS	SHEET NO.
07-00067-CO-RS		COOK	10	6
FED. ROAD DIST. AC. 1 ILLINOIS HIGH PRIORITY PROJECT				
CONTRACT NO. 83915				

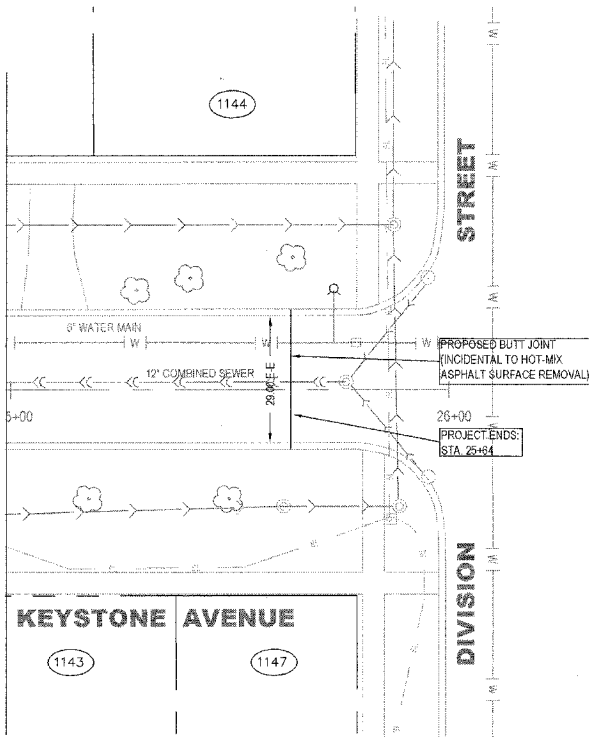


MATCHLINE 20+00

MATCHLINE 25+00



MATCHLINE 25+00



REVISIONS					
DATE	BY	DESCRIPTION	DATE	BY	DESCRIPTION

DESIGNED: TJT
DRAWN: TJT
CHECKED: GWK
APPROVED: GWK DATE: 12/28/06



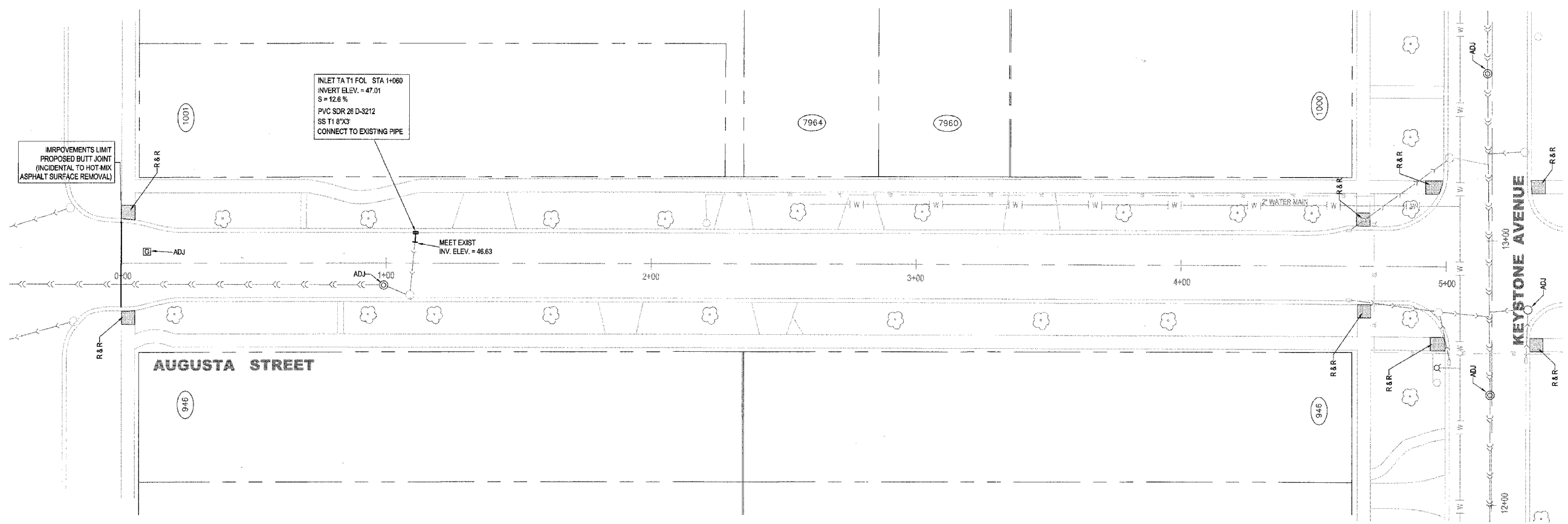
**VILLAGE OF RIVER FOREST  
ENGINEERING DEPARTMENT**  
400 PARK AVE.  
RIVER FOREST, IL 60305  
(708) 366-8500

TITLE: KEYSTONE AVENUE AND AUGUSTA STREET  
RESURFACING IMPROVEMENTS  
PLAN  
SECTION NO: 07-00083-00-RS



SCALE: 1"=20'
DATE: 12/28/2006
PROJ. NO: 4065
SHEET: 6 OF 10

F.A.P. RTE.	SECTION	COUNTY	TOTAL SHEETS	SHEET NO.
07-00087-00-RS	07-00087-00-RS	COOK	10	7
FED. ROAD DIST. NO. 1 ILLINOIS HIGH PRIORITY PROJECT				
CONTRACT NO. 83915				



REVISIONS							
DATE	BY	DESCRIPTION	DATE	BY	DESCRIPTION	DATE	BY

DESIGNED	TJT
DRAFTED	TJT
CHECKED	GWK
APPROVED	GWK
DATE	12/28/06

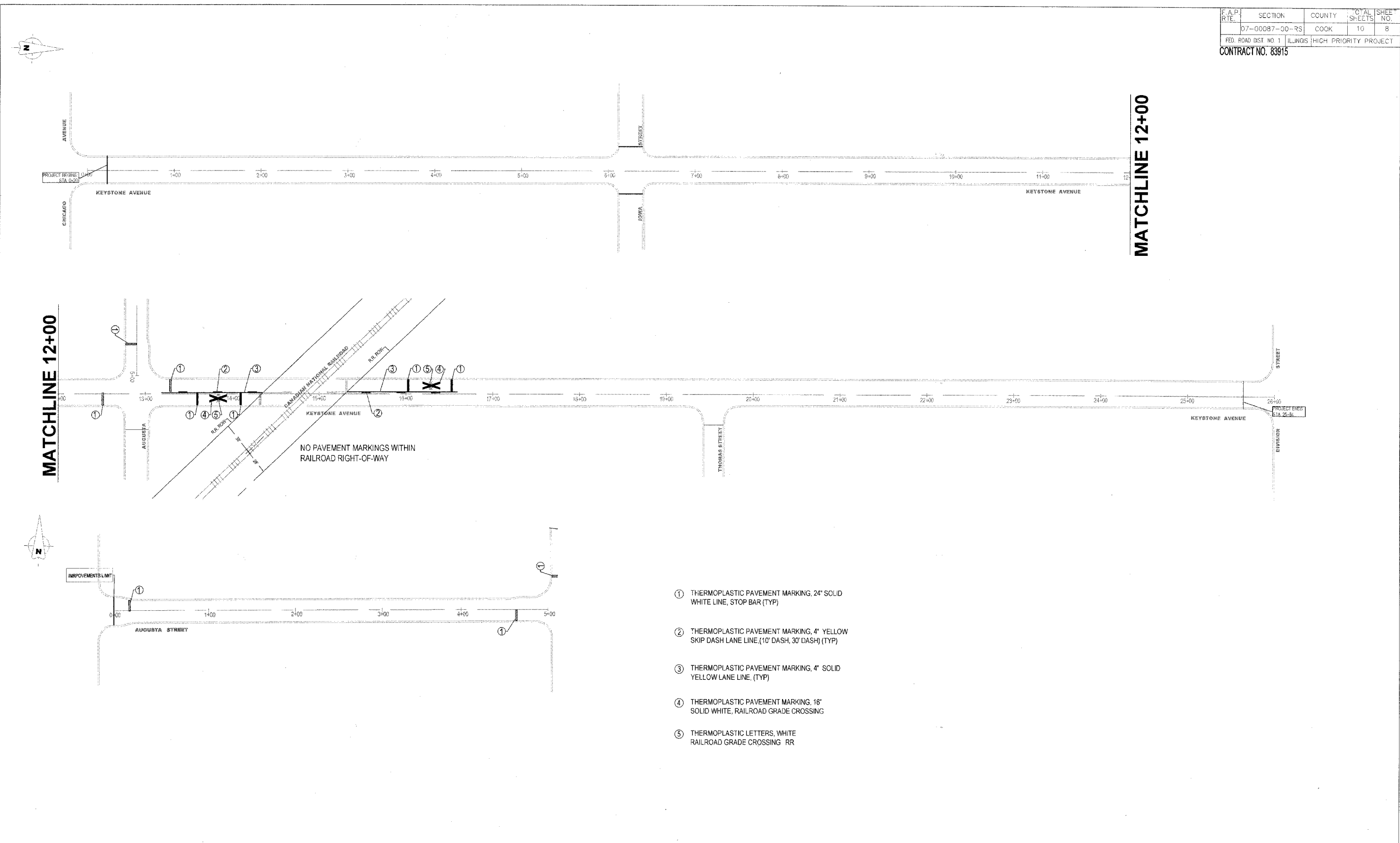
**VILLAGE OF RIVER FOREST**  
**ENGINEERING DEPARTMENT**  
**400 PARK AVE.**  
**RIVER FOREST, IL 60305**  
**(708) 366-8500**

TITLE:  
**KEYSTONE AVENUE AND AUGUSTA STREET**  
**RESURFACING IMPROVEMENTS**  
**PLAN**  
 SECTION NO: 07-00083-00-RS



SCALE	1" = 20'
DATE	12/28/2006
PROJ. NO.	4065
SHEET	7 OF 10

F.A.P. RTE.	SECTION	COUNTY	TOTAL SHEETS	SHEET NO.
	07-00087-00-RS	COOK	10	8
FED. ROAD DIST. NO. 1 ILLINOIS HIGH PRIORITY PROJECT				
CONTRACT NO. 83915				



MATCHLINE 12+00

MATCHLINE 12+00

NO PAVEMENT MARKINGS WITHIN RAILROAD RIGHT-OF-WAY

- ① THERMOPLASTIC PAVEMENT MARKING, 24" SOLID WHITE LINE, STOP BAR (TYP)
- ② THERMOPLASTIC PAVEMENT MARKING, 4" YELLOW SKIP DASH LANE LINE, (10' DASH, 30' DASH) (TYP)
- ③ THERMOPLASTIC PAVEMENT MARKING, 4" SOLID YELLOW LANE LINE, (TYP)
- ④ THERMOPLASTIC PAVEMENT MARKING, 16" SOLID WHITE, RAILROAD GRADE CROSSING
- ⑤ THERMOPLASTIC LETTERS, WHITE RAILROAD GRADE CROSSING RR

REVISIONS					
DATE	BY	DESCRIPTION	DATE	BY	DESCRIPTION

DESIGNED:	TJT
DRAFTED:	TJT
CHECKED:	GWK
APPROVED:	GWK
DATE:	12/28/06



**VILLAGE OF RIVER FOREST  
ENGINEERING DEPARTMENT**  
400 PARK AVE.  
RIVER FOREST, IL 60305  
(708) 366-8500

TITLE:  
KEYSTONE AVENUE AND AUGUSTA STREET  
RESURFACING IMPROVEMENTS  
PAVEMENT MARKING PLAN  
SECTION NO: 07-00083-00-RS

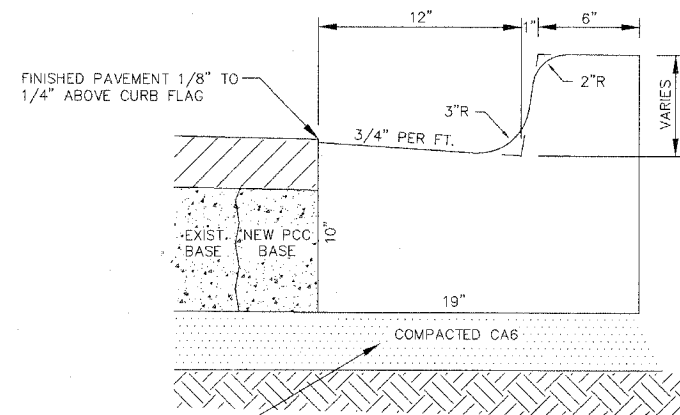
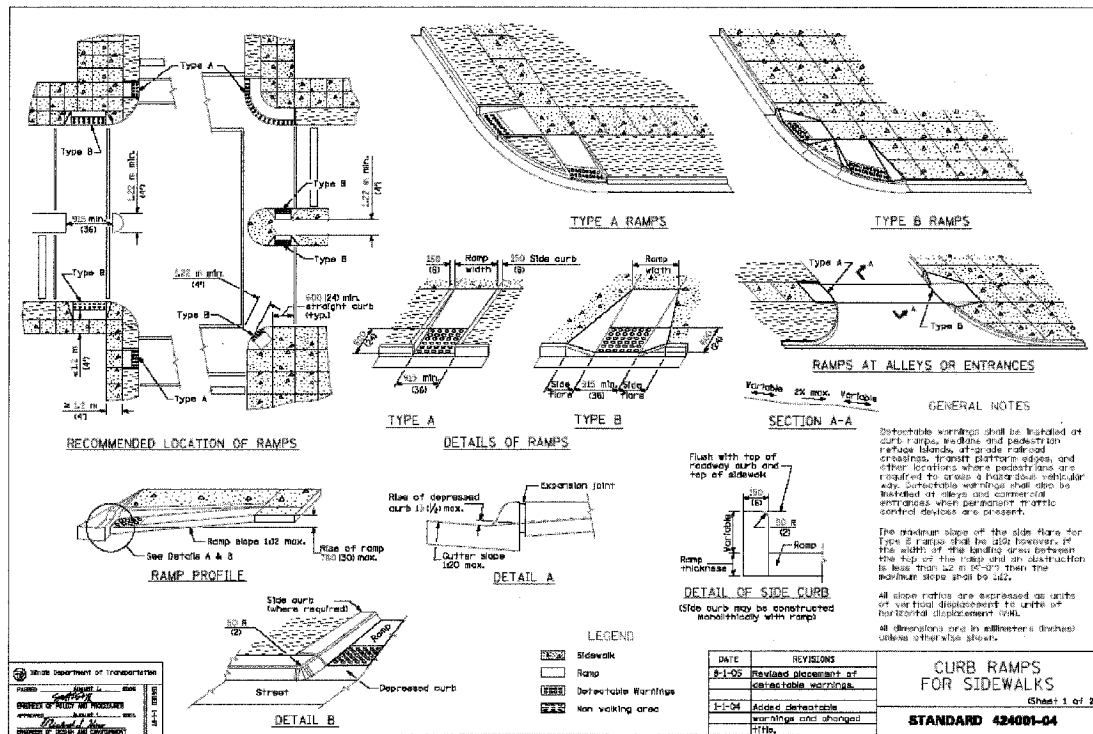


**Illinois Department  
of Transportation**

SCALE:	1" = 50'
DATE:	12/28/2006
PROJ. NO.:	4065
SHEET:	8 OF 10

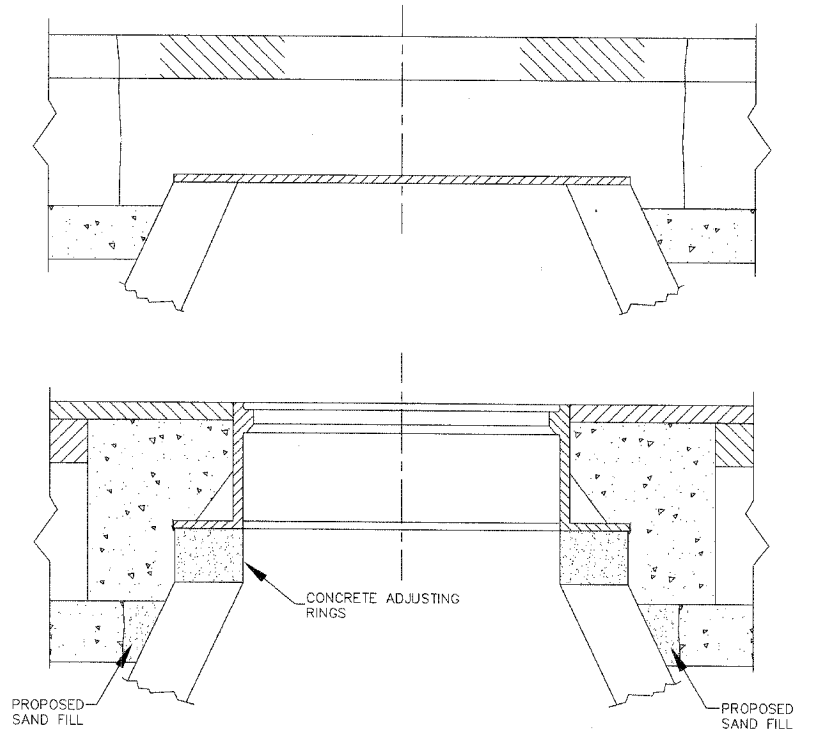


CONTRACT NO. 83915



**B6:12 CURB & GUTTER MODIFIED**

NOT TO SCALE



**CONSTRUCTION PROCEDURES**

STAGE I (BEFORE PAVEMENT MILLING)

- REMOVE A MINIMUM OF 12" OF THE PAVEMENT FROM AROUND THE STRUCTURE.
- REMOVE THE EXISTING FRAME AND LID FROM THE STRUCTURE.
- COVER THE STRUCTURE OPENING WITH A 36" DIAMETER METAL PLATE.
- BACKFILL WITH CRUSHED STONE AND A MINIMUM 1 1/2" THICK BITUMINOUS MATERIAL APPROVED BY THE ENGINEER.

STAGE II (AFTER PAVEMENT MILLING)

- REMOVE THE BITUMINOUS MATERIAL AND CRUSHED STONE.
- INSTALL THE FRAME AND LIDS ADJUST THE FRAME TO ITS FINAL SURFACE ELEVATION.
- THE SURROUNDING SPACE SHALL BE FILLED WITH CLASS SI CONCRETE TO THE ELEVATION OF THE SURFACE OF THE EXISTING BASE COURSE.

THE PROCEDURE EXPLAINED ABOVE SHALL CONFORM TO THE APPLICABLE PORTIONS OF SECTION 353, 408, 602, AND 603 OF THE STANDARD SPECIFICATIONS.

**LOCATION OF STRUCTURES**

THE CONTRACTOR WILL BE REQUIRED TO KEEP A RECORD OF THE LOCATIONS OF THE BURIED STRUCTURES ACCORDING TO THE STATION AND DISTANCE LEFT OR RIGHT OF THE CENTERLINE OF PAVEMENT. UPON COMPLETION OF THE WORK THE CONTRACTOR WILL DELIVER THE RECORD TO THE ENGINEER.

**BASIS OF PAYMENT**

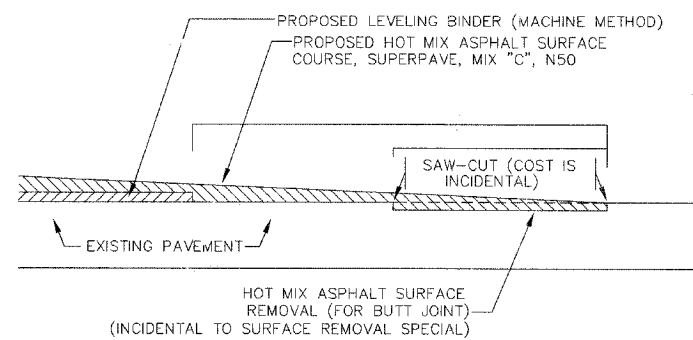
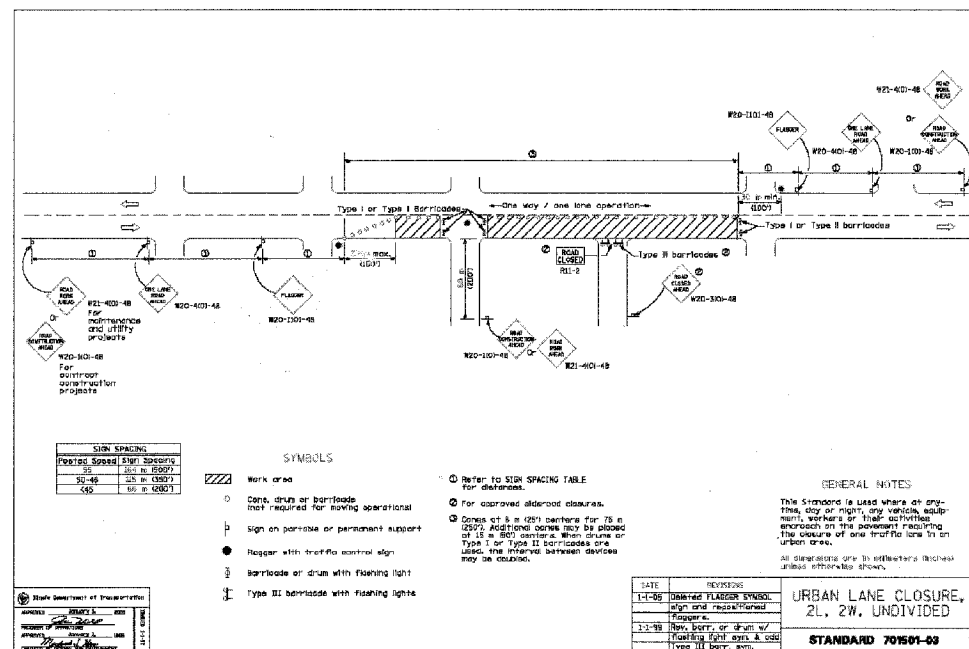
FRAMES AND LIDS TO BE ADJUSTED (SPECIAL)

**NOTES**

- EXISTING BROKEN FRAMES AND LIDS SHALL BE REMOVED AND DISPOSED OF BY THE CONTRACTOR AND SHALL BE REPLACED AS DIRECTED BY THE ENGINEER. REPLACEMENT FRAMES AND LIDS WILL BE PAID FOR IN ACCORDANCE WITH ARTICLE 09.04 OF THE STANDARD SPECIFICATIONS UNLESS A SEPARATE PAY ITEM HAS BEEN PROVIDED.
- IF THE EXISTING LIDS ARE OPEN, THE FRAME WILL BE ADJUSTED TO THE ELEVATION OF THE MILLED PAVEMENT SURFACE PRIOR TO THE MILLING OPERATION. THE FRAME WILL NOT BE REMOVED AND COVERED BY THE METAL PLATE.
- THE METAL PLATE USED TO COVER THE STRUCTURE SHALL REMAIN THE PROPERTY OF THE CONTRACTOR.

**FRAMES AND LIDS TO BE ADJUSTED (SPECIAL)**

NOT TO SCALE



**BUTT JOINT AND TAPER DETAIL**

NOT TO SCALE

REVISIONS						
DATE	BY	DESCRIPTION	DATE	BY	DESCRIPTION	

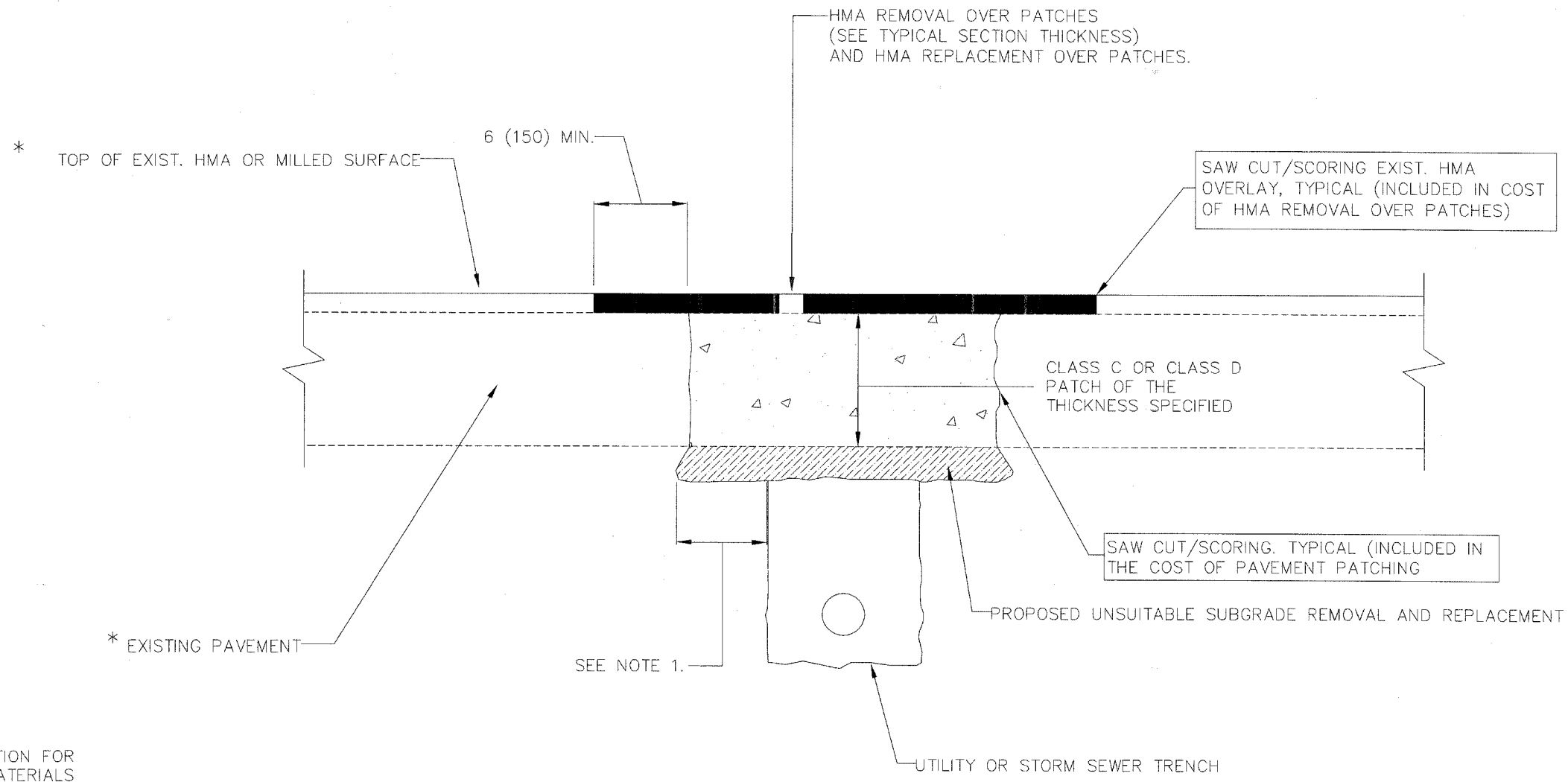
DESIGNED	TJT
DRAFTED	TJT
CHECKED	GWK
APPROVED	GWK DATE 12/28/06



TITLE: KEYSTONE AVENUE AND AUGUSTA STREET RESURFACING IMPROVEMENTS STANDARDS AND DETAILS  
SECTION NO: 07-00083-00-RS



SCALE	NONE
DATE	12/28/2006
PROJ. NO.	4065
SHEET	9 of 10



\* SEE TYPICAL SECTION FOR THICKNESS AND MATERIALS

\* EXISTING PAVEMENT

\* TOP OF EXIST. HMA OR MILLED SURFACE

6 (150) MIN.

HMA REMOVAL OVER PATCHES (SEE TYPICAL SECTION THICKNESS) AND HMA REPLACEMENT OVER PATCHES.

SAW CUT/SCORING EXIST. HMA OVERLAY, TYPICAL (INCLUDED IN COST OF HMA REMOVAL OVER PATCHES)

CLASS C OR CLASS D PATCH OF THE THICKNESS SPECIFIED

SAW CUT/SCORING, TYPICAL (INCLUDED IN THE COST OF PAVEMENT PATCHING)

PROPOSED UNSUITABLE SUBGRADE REMOVAL AND REPLACEMENT

SEE NOTE 1.

UTILITY OR STORM SEWER TRENCH

NOTES:

1. THE WIDTH OF THE FULL DEPTH PATCH OVER A TRENCH SHALL BE 12 (300) WIDER ON EACH SIDE OF THE TRENCH.
2. FOR METHOD OF MEASUREMENT AND BASIS OF PAVEMENT. SEE RECURRING SPECIAL PROVISIONS "PATCHING WITH HOT-MIX ASPHALT OVERLAY REMOVAL".

SCHEDULE OF CONSTRUCTION

1. REMOVE THE EXISTING HMA MATERIAL OVER THE AREA TO BE PATCHED.
2. REMOVE AND REPLACE FULL PATCHES
3. REPLACE HMA MATERIAL OVER THE AREA TO BE PATCHED.