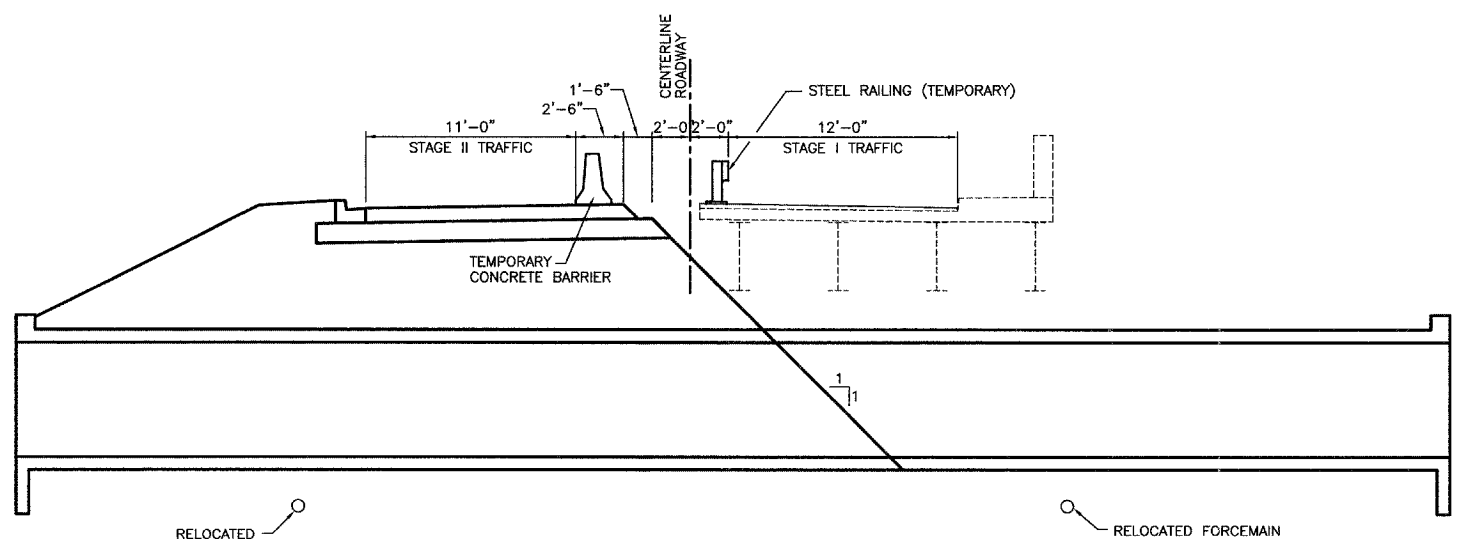


STAGE I TRAFFIC CONTROL

- - DRUMS AT 25' O.C. (UNLESS NOTED OTHERWISE)
- ▬ - TEMPORARY CONCRETE BARRIER
- ① - TYPE III BARRICADE WHEN WORKERS ARE NOT PRESENT



STAGE CONSTRUCTION CROSS SECTION

STEEL RAILING (TEMPORARY)	
STA. 16+11.4 TO STA. 16+83.5	72
TOTAL	72

TEMPORARY CONCRETE BARRIER	
STA. 15+36.9 TO STA. 16+11.4	75
STA. 16+83.5 TO STA. 17+58.1	75
TOTAL	150

SEQUENCE OF WORK

1. WITH THE EXISTING STRUCTURE REMAINING OPEN TO TRAFFIC:
 - RELOCATE EXISTING FORCEMAIN
 - RELOCATE EXISTING WATER MAIN
 - COORDINATE WITH UTILITY COMPANIES TO RELOCATE UTILITIES ATTACHED TO THE STRUCTURE
 - CONSTRUCT CAST-IN PLACE BOX CULVERT
2. SETUP STAGE I TRAFFIC CONTROL AND REMOVE WEST SIDE OF STRUCTURE
3. BACKFILL AND CONSTRUCT STAGE I PAVEMENT AND CURB & GUTTER
4. SETUP STAGE II TRAFFIC CONTROL AND DIVERT TRAFFIC TO NEW PAVEMENT
5. REMOVE REMAINDER OF THE STRUCTURE AND CONSTRUCT REMAINDER OF THE WORK
6. REMOVE STAGE II TRAFFIC CONTROL

NOTES

ADVANCE WARNING SIGNS SHALL BE PLACED IN ACCORDANCE WITH HIGHWAY STANDARD 701321 AND AS DIRECTED BY THE ENGINEER.
 DIAGONAL PARKING RIGHT OF STA. 17+50 TO STA. 18+50 SHALL BE MAINTAINED DURING STAGE I CONSTRUCTION.
 WORK SHOWN ON THIS DRAWING SHALL BE CONSIDERED INCLUDED IN THE LUMP SUM COST OF TRAFFIC CONTROL AND PROTECTION, STANDARD 701321, THE EACH COST OF TEMPORARY BRIDGE TRAFFIC SIGNALS, AND THE COST PER FOOT FOR TEMPORARY CONCRETE BARRIER AND RELOCATE TEMPORARY CONCRETE BARRIER.
 DURING STAGE I & II CONSTRUCTION THE EXISTING SIDEWALK SHALL BE CLOSED USING HIGHWAY STANDARD 701801 AT STA. 17+75 AND AT MILL STREET.