

CONTRACT NO. 87349

F.A.S. RTE.	SECTION	COUNTY	TOTAL SHEETS	SHEET NO.
268	07-00644-00-BR	LA SALLE	13	1

### INDEX OF SHEETS

1. COVER SHEET
2. TYPICAL SECTIONS
3. SUMMARY OF QUANTITIES & GENERAL NOTES
4. SCHEDULE OF QUANTITIES
5. PLAN AND PROFILE
- 6-7. TRAFFIC CONTROL PLANS
8. CULVERT DETAILS
- 9-10. UTILITY RELOCATION DETAILS
- 11-12. CROSS SECTIONS
13. SOIL BORINGS

### HIGHWAY STANDARDS

- 000001-04 STANDARD SYMBOLS, ABBREVIATIONS AND PATTERNS  
 542601 REINFORCED CONCRETE PIPE ELBOW  
 602301-01 INLET, TYPE A  
 604051-02 FRAME AND GRATE, TYPE 11  
 606001-03 CONCRETE CURB, TYPE B AND COMBINATION CONCRETE CURB AND GUTTER  
 664001-01 CHAIN LINK FENCE  
 701321-08 LANE CLOSURE, 2L, 2W, BRIDGE REPAIR WITH BARRIER  
 701501-03 URBAN LANE CLOSURE, 2L, 2W, UNDIVIDED  
 701801-03 LANE CLOSURE, MULTILANE 1W OR 2W CROSSWALK OR SIDEWALK CLOSURE  
 702001-06 TRAFFIC CONTROL DEVICES  
 704001-03 TEMPORARY CONCRETE BARRIER  
 780001-01 TYPICAL PAVEMENT MARKINGS

MICROFILMED \_\_\_\_\_  
 REEL NUMBER \_\_\_\_\_  
 AWARDED \_\_\_\_\_  
 RESIDENT ENGINEER \_\_\_\_\_  
 AS BUILT CHANGES WERE MADE  
 ON THE FOLLOWING SHEETS \_\_\_\_\_



FULL SIZE PLANS HAVE BEEN PREPARED USING STANDARD ENGINEERING SCALES. REDUCED SIZED PLANS WILL NOT CONFORM TO STANDARD SCALES. IN MAKING MEASUREMENTS ON REDUCED PLANS, THE ABOVE SCALES MAY BE USED.

J.U.L.I.E.  
 JOINT UTILITY LOCATION INFORMATION FOR EXCAVATION  
 1-800-892-0123

DISTRICT 3 NO. (815) 434-6131

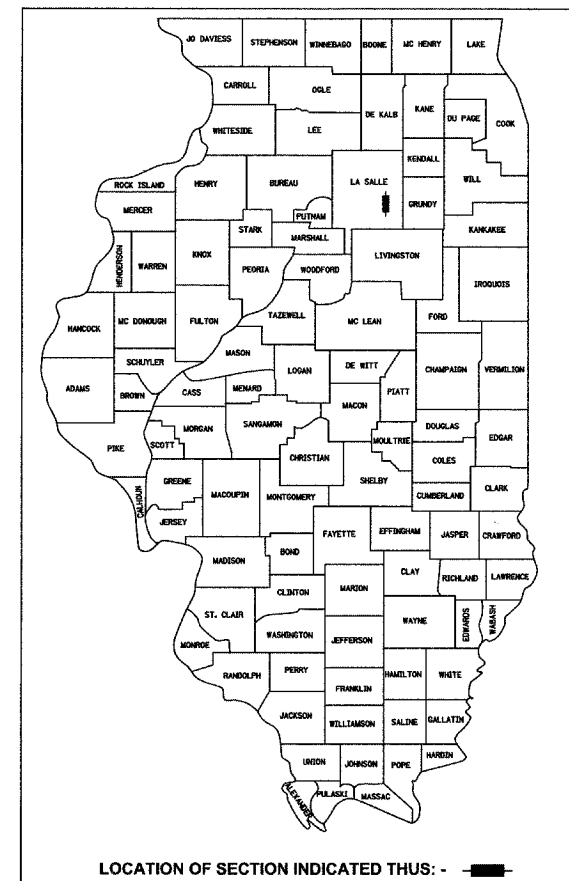
TOWNSHIP: FALL RIVER

CONTRACT NO. 87349

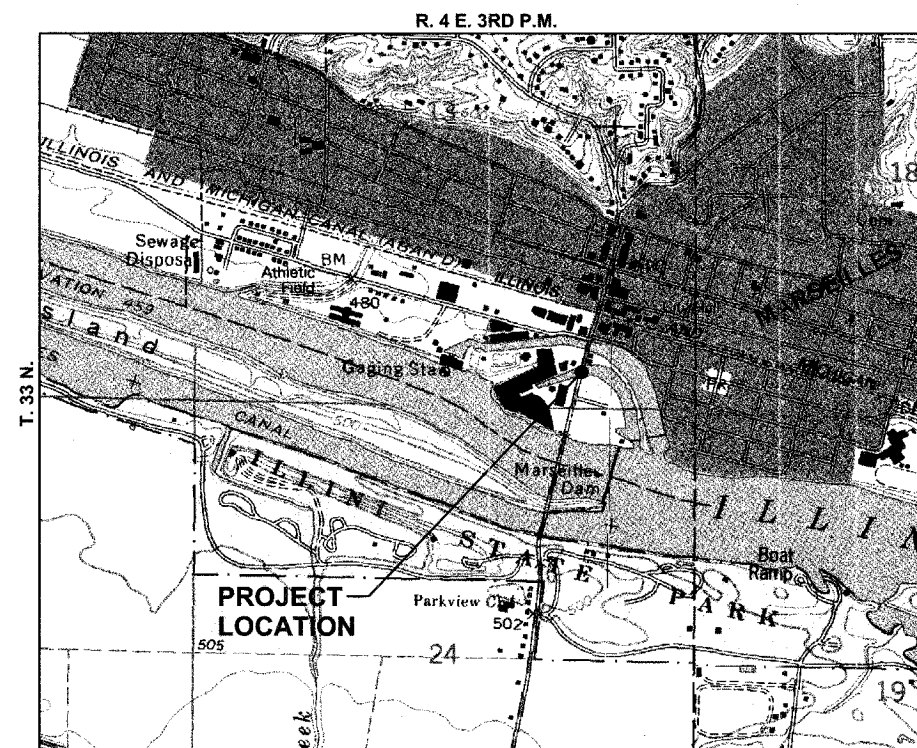
STATE OF ILLINOIS  
 DEPARTMENT OF TRANSPORTATION  
 DIVISION OF HIGHWAYS

# PLANS FOR PROPOSED FEDERAL AID HIGHWAY

FAS 268 (MAIN STREET/CH 15)  
 SECTION 07-00644-00-BR  
 PROJECT BRS-268(110)  
 LA SALLE COUNTY  
 C-93-060-07



DESIGN FUNCTIONAL CLASSIFICATION: ARTERIAL  
 ADT 4200 (2006)  
 B 5100 (2019)  
 DESIGN SPEED: 30 MPH



## LOCATION MAP (NOT TO SCALE)

GROSS LENGTH OF IMPROVEMENT = 116.87' (0.022 MILES)  
 NET LENGTH OF IMPROVEMENT = 116.87' (0.022 MILES)



07-02-07  
 date  
 JAMES K. CLINARD  
 LICENSED PROFESSIONAL ENGINEER  
 NO. 062-041793  
 STATE OF ILLINOIS  
 expires 11-30-2007  
 signature  
 PROFESSIONAL DESIGN FIRM  
 LICENSE NO. 184-001717

CHAMBLIN ASSOCIATES  
 PERU ILLINOIS MORRIS

STATE OF ILLINOIS  
 DEPARTMENT OF TRANSPORTATION  
 DIVISION OF HIGHWAYS

SUBMITTED 7-2 20 07  
*James F. Kruger* LOCAL AGENCY

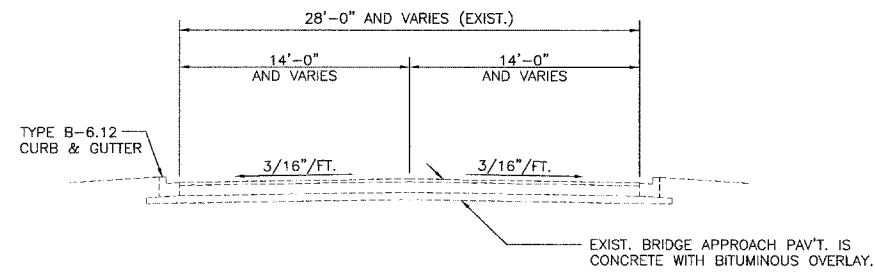
7 5 20 07  
*Ken King ST* DISTRICT LOCAL ROADS AND STREETS ENGINEER

APPROVED 7 5 20 07  
*James F. Kruger ST* DEPUTY DIRECTOR OF HIGHWAYS, REGION 2 ENGINEER

PRINTED BY THE AUTHORITY  
 OF THE STATE OF ILLINOIS

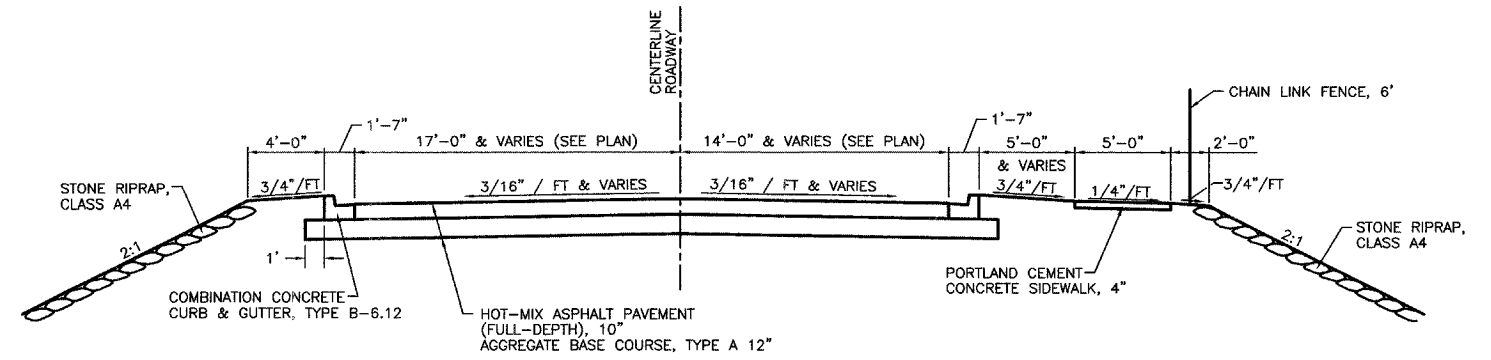
\*DATE: 04/07  
 COVER.DWG

Project Name: CHAMBLIN ASSOCIATES, Inc. Job Number: 07-00644-00-BR Date: 04/07/07



**EXISTING TYPICAL SECTION**

STA. 15+88.13 TO STA. 17+05.00  
(BRIDGE OMISSION STA. 16+10.38 TO 16+83.28)



**PROPOSED TYPICAL SECTION**

STA. 15+88.13 TO STA. 17+05.00

	HMA BINDER FIRST LIFT	HMA BINDER (POLYMER) SECOND LIFT	HMA SURFACE
PG GRADE	PG64-22	SBS PG70-22	SBS PG70-22
MAX % RAP ALLOWABLE**	15%	15%	10%
DESIGN AIR VOIDS	4.0% @ N70	4.0% @ N70	4.0% @ N70
MIXTURE COMPOSITION	IL 19.0	IL 19.0	IL 12.5 OR IL 9.5
FRICTION AGGREGATE			MIXTURE D
DENSITY TEST METHOD	NUCLEAR/ CORES	NUCLEAR/ CORES	NUCLEAR/ CORES

\*\* IF RAP OPTION IS SELECTED, THE ASPHALT CEMENT GRADE MAY NEED TO BE ADJUSTED. THIS WILL BE DETERMINED BY THE ENGINEER.

DRAWN BY: NV  
CHECKED BY: JKC

CAD/.DWG: TYP  
DATE: 05/07

REVISIONS	
DATE	BY

**CHAMLIN ASSOCIATES**

PERU MORRIS  
ILLINOIS

**FAS ROUTE 268 (CH 15) MAIN ST. OVER SOUTH MILL RACE  
SECTION 07-00644-00-BR  
LASALLE COUNTY**

**TYPICAL SECTIONS**

SCALE: N.T.S.

SHEET 2

FILE NO.: 11670.00Y-1

OF 13

**SUMMARY OF QUANTITIES**

NO.	DESCRIPTION	UNIT	QTY.
20200100	EARTH EXCAVATION	CU YD	50
20300100	CHANNEL EXCAVATION	CU YD	115
20400800	FURNISHED EXCAVATION	CU YD	1715
25000400	NITROGEN FERTILIZER NUTRIENT	POUND	2
25000500	PHOSPHORUS FERTILIZER NUTRIENT	POUND	2
25000600	POTASSIUM FERTILIZER NUTRIENT	POUND	2
25200100	SODDING	SQ YD	137
25200200	SUPPLEMENTAL WATERING	UNIT	1
28000250	TEMPORARY EROSION CONTROL SEEDING	POUND	14
28100107	STONE RIPRAP, CLASS A4	SQ YD	320
28200200	FILTER FABRIC	SQ YD	320
31101900	SUB-BASE GRANULAR MATERIAL, TYPE C	TON	78
35101100	AGGREGATE BASE COURSE, TYPE A 12'	SQ YD	495
40701881	HOT-MIX ASPHALT PAVEMENT (FULL-DEPTH), 10"	SQ YD	427
42400100	PORTLAND CEMENT CONCRETE SIDEWALK 4 INCH	SQ FT	544
44000100	PAVEMENT REMOVAL	SQ YD	182
44000500	COMBINATION CURB AND GUTTER REMOVAL	FOOT	63
44000600	SIDEWALK REMOVAL	SQ FT	186
50100100	REMOVAL OF EXISTING STRUCTURES	EACH	1
50800105	REINFORCEMENT BARS	POUND	11540
50901125	STEEL RAILING (TEMPORARY)	FOOT	72
54003000	CONCRETE BOX CULVERTS	CU YD	67
* 54215973	REINFORCED CONCRETE PIPE ELBOW, 18"	EACH	1
* 56100700	WATER MAIN 8"	FOOT	91
60239600	INLETS, TYPE A, SPECIAL, TYPE II FRAME AND GRATE	EACH	2
60603800	COMBINATION CONCRETE CURB AND GUTTER, TYPE B-6. 12	FOOT	235
66400305	CHAIN LINK FENCE, 6'	FOOT	90
67100100	MOBILIZATION	L SUM	1
70100405	TRAFFIC CONTROL AND PROTECTION, STANDARD 701321	EACH	1
70102640	TRAFFIC CONTROL AND PROTECTION, STANDARD 701801	L SUM	1
70103815	TRAFFIC CONTROL SURVEILLANCE	CAL DA	30
70106500	TEMPORARY BRIDGE TRAFFIC SIGNALS	EACH	1
70300100	SHORT-TERM PAVEMENT MARKING	FOOT	12
70301000	WORK ZONE PAVEMENT MARKING REMOVAL	SQ FT	4
70400100	TEMPORARY CONCRETE BARRIER	FOOT	300
70400200	RELOCATE TEMPORARY CONCRETE BARRIER	FOOT	150
* 78001110	PAINT PAVEMENT MARKING - LINE 4"	FOOT	30
XX003437	REMOVE AND REINSTALL EXISTING PRECAST REINFORCED CONCRETE FLARED END SECTIONS	EACH	1
* XX005375	FORCEMAIN 4"	FOOT	90
Z0013798	CONSTRUCTION LAYOUT	L SUM	1

\* SPECIALTY ITEMS

GENERAL NOTES

THE THICKNESS OF HMA SHOWN ON THE PLANS IS THE NOMINAL THICKNESS. DEVIATIONS FROM THE NOMINAL THICKNESS WILL BE PERMITTED WHEN SUCH DEVIATIONS OCCUR DUE TO IRREGULARITIES IN THE EXISTING SURFACE OR BASE ON WHICH THE HMA IS PLACED.

EXCEPT AS NOTED ON THE PLANS, PAVEMENT GRADES SHOWN ARE AT THE TOP OF PAVEMENT SURFACES.

THE ENGINEER WILL BE THE SOLE JUDGE CONCERNING CURING TIME FOR THE VARIOUS HMA LIFTS.

FOR STABILIZATION, ALL TYPE III BARRICADES SHALL REQUIRE A MINIMUM OF FOUR SAND BAGS PER BARRICADE.

THE FINISHED EARTHWORK SHALL HAVE A VEGETATION SUSTAINING SOIL COVERING THE TOP FOUR INCHES IN AREAS TO BE SEEDED OR SODDED. THE VEGETATION SUSTAINING SOIL REQUIRED WILL NOT BE PAID FOR SEPARATELY BUT SHALL BE INCLUDED IN THE COST OF FURNISHED EXCAVATION.

ALL ELEVATIONS REFERRING TO U. S. G. S. MEAN SEA LEVEL DATUM.

ABANDONED UNDERGROUND UTILITIES THAT CONFLICT WITH CONSTRUCTION SHALL BE DISPOSED OF OUTSIDE THE LIMITS OF THE RIGHT OF WAY ACCORDING TO ARTICLE 202.03 OF THE STANDARD SPECIFICATIONS AND AS DIRECTED BY THE ENGINEER. THIS WORK WILL NOT BE PAID FOR SEPARATELY, BUT SHALL BE INCLUDED IN THE COST OF EARTH EXCAVATION.

ANY REFERENCE TO A STANDARD IN THESE PLANS SHALL BE INTERPRETED TO MEAN THE EDITION AS INDICATED BY THE SUBNUMBER SHOWN IN THE LIST OF STANDARDS INCLUDED IN THESE PLANS.

THE FOLLOWING RATES OF APPLICATION HAVE BEEN USED IN CALCULATING PLAN QUANTITIES:

GRANULAR MATERIALS	2.05	TONS / CU YD
BITUMINOUS MAT PRIME COAT	0.08 0.375	GAL / SQ YD OR GAL / SQ YD
AGGREGATE PRIME COAT	0.002	TONS / SQ YD
HMA RESURFACING	112	LBS / SQ YD / IN
SHORT TERM PAVEMENT MARKING	10	FT /100 FT OF APPLICATION
MIX FOR CRACKS, JTS & FLGWYS	0.0003	TONS / SQ YD
LEVEL BINDER (HAND METHOD)	0.0005	TONS / SQ YD
SUPPLEMENTAL WATERING	3	GAL / SQ YD / APPLICATION
CALCIUM CHLORIDE	2	LB / SQ YD / APPLICATION
TEMPORARY DITCH CHECKS	5	TONS AGGREGATE

THE WORK REQUIRED TO CONNECT ANY SEWER TO AN EXISTING DRAINAGE STRUCTURE OR PIPE WILL NOT BE PAID FOR SEPARATELY, BUT SHALL BE CONSIDERED AS INCLUDED IN THE CONTRACT UNIT PRICE BID FOR THE SEWER ITEMS.

MEMBERS OF JULIE KNOWN TO BE WITHIN THE LIMITS OF THE IMPROVEMENT ARE:

AT&T	65 W. WEBSTER, FLOOR 3 - ENGINEERING JOLIET, IL 60431
MARSEILLES TELEPHONE	244 LINCOLN STREET MARSEILLES, IL 61341
CITY OF MARSEILLES	288 LINCOLN STREET MARSEILLES, IL 61341
AMEREN	340 RACCUGLIA DRIVE, P. O. BOX 1428 LASALLE, IL 61301
NICOR	1844 FERRY ROAD NAPERVILLE, IL 60563
MEDIACOM	2506-1/2 N. BLOOMINGTON ST. STREATOR, IL 61364

COMMITMENTS

MARSEILLES TELEPHONE OWNS FIBER OPTIC LINES BETWEEN THE TWO OUTSIDE BEAMS ON THE EAST SIDE OF THE EXISTING BRIDGE. THE CONTRACTOR SHALL CONTACT JIM SPRINGER WITH MARSEILLES TELEPHONE AT 309-367-4197 WHEN CONSTRUCTION BEGINS TO COORDINATE ADJUSTMENT OF THIS UTILITY.

DRAWN BY: NV

CAD/DWG: GNOTES

REVISIONS

DATE BY

**CHAMBLIN**  
ASSOCIATES

PERU MORRIS  
ILLINOIS

**FAS ROUTE 268 (CH 15) MAIN ST. OVER SOUTH MILL RACE**  
**SECTION 07-00644-00-BR**  
**LASALLE COUNTY**

**SUMMARY OF QUANTITIES & GENERAL NOTES**

SCALE: N.T.S.

SHEET 3

CHECKED BY: JKC

DATE: 05/07

FILE NO.: 11670.00Y-1

OF 13

EARTHWORK QUANTITIES				
LOCATION	THEORETICAL		FURNISHED EXCAVATION SHORTAGE (-) OR EXCESS (+)	REMARKS
	CUT	FILL		
	CU YD	CU YD	CU YD	
			[(A)0.75]-(B)	
	(A)	(B)	(C)	
15+80.6 TO 17+05	50	1752	-1715	
TOTAL	50	1752	-1715	
	PAY ITEM	INFO ONLY	PAY ITEM	

PAVEMENT SCHEDULE		
LOCATION (STA. TO STA.)	AGGREGATE BASE COURSE, TYPE A, 12"	HOT-MIX ASPHALT PAVEMENT (FULL-DEPTH), 10"
15+88.13 TO 17+05.00	495	427
TOTAL	495	427

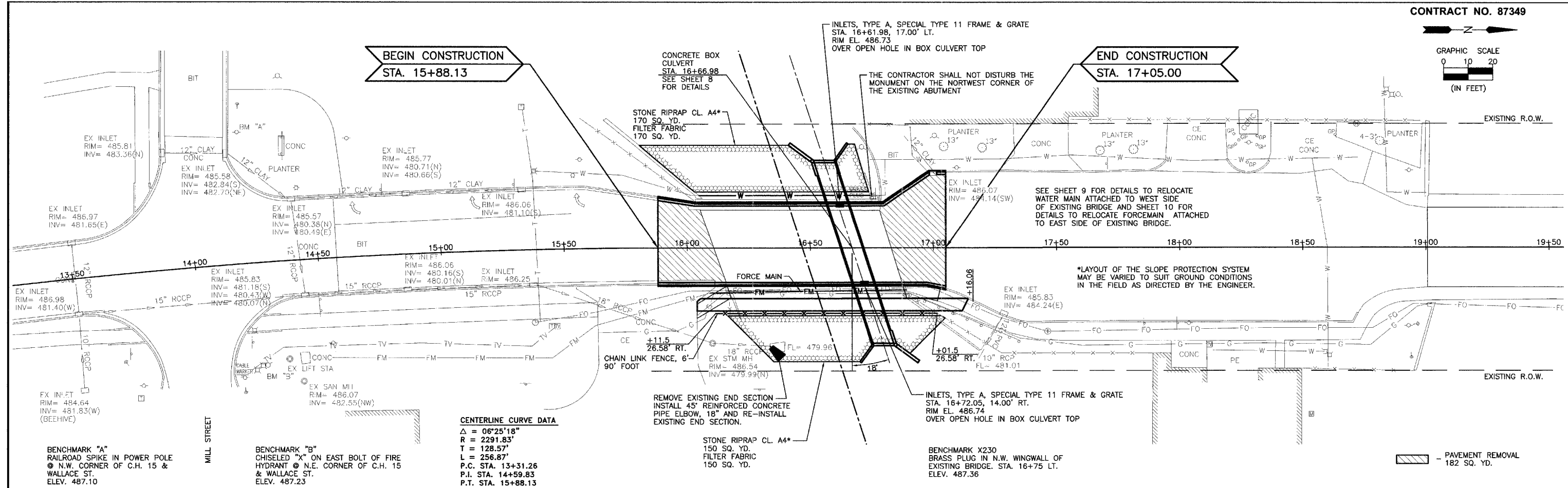
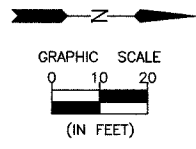
PORTLAND CEMENT CONCRETE SIDEWALK, 4"	
LOCATION (STA. TO STA.)	SQ FT
16+04.00 TO 17+14.06	544
TOTAL	544

COMBINATION CURB AND GUTTER REMOVAL	
LOCATION (STA. TO STA.)	FOOT
15+88.13 TO 16+02.97 LT.	15
16+97.49 TO 17+05.00 LT.	8
15+88.13 TO 16+11.20 RT.	23
16+88.15 TO 17+05.00 RT.	17
TOTAL	63

COMBINATION CONCRETE CURB AND GUTTER TYPE B-6.12	
LOCATION (STA. TO STA.)	FOOT
15+88.13 TO 16+98.36 LT.	114
16+98.36 TO 17+05.00 LT.	4
15+88.13 TO 17+05.00 RT.	117
TOTAL	235

PAVEMENT REMOVAL	
LOCATION (STA. TO STA.)	SQ YD
15+88.13 TO 16+15.90	75
16+78.13 TO 17+05.00	107
TOTAL	182

SIDEWALK REMOVAL	
LOCATION (STA. TO STA.)	SQ FT
16+03.98 TO 16+15.72 RT.	66
16+88.15 TO 17+14.06 RT.	120
TOTAL	186



**CENTERLINE CURVE DATA**  
 $\Delta = 06^{\circ}25'18''$   
 $R = 2291.83'$   
 $T = 128.57'$   
 $L = 256.87'$   
 P.C. STA. 13+31.26  
 P.I. STA. 14+59.83  
 P.T. STA. 15+88.13

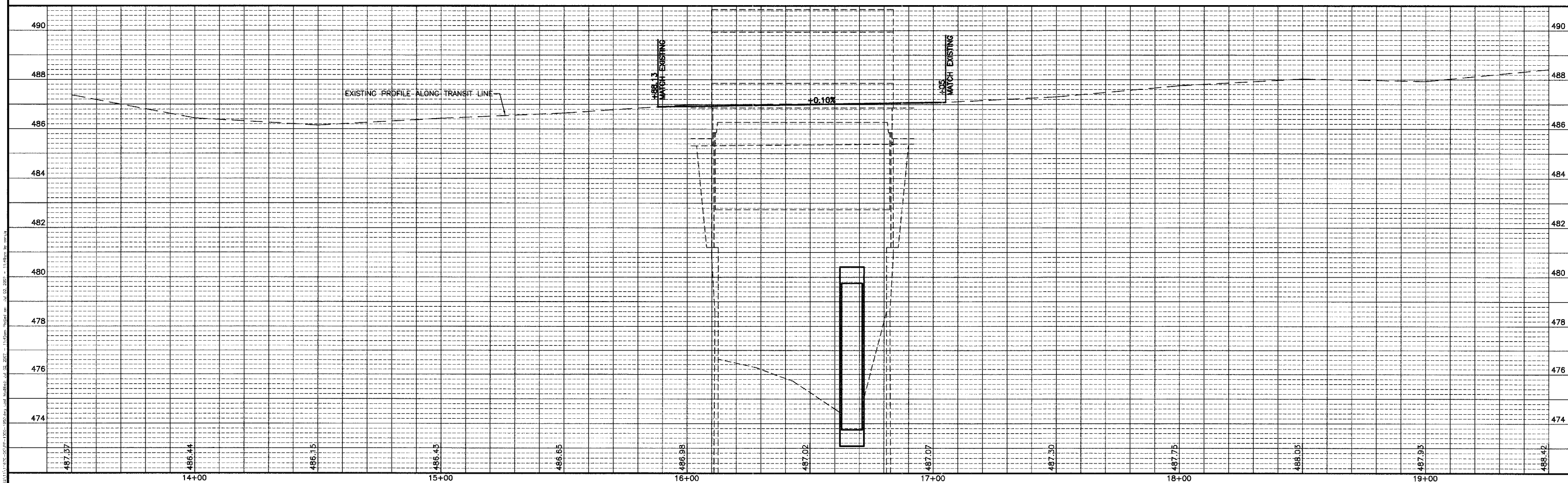
BENCHMARK "A"  
RAILROAD SPIKE IN POWER POLE  
N.W. CORNER OF C.H. 15 &  
WALLACE ST.  
ELEV. 487.10

BENCHMARK "B"  
CHISELED "X" ON EAST BOLT OF FIRE  
HYDRANT N.E. CORNER OF C.H. 15  
& WALLACE ST.  
ELEV. 487.23

REMOVE EXISTING END SECTION  
INSTALL 45" REINFORCED CONCRETE  
PIPE ELBOW, 18" AND RE-INSTALL  
EXISTING END SECTION.

BENCHMARK X230  
BRASS PLUG IN N.W. WINGWALL OF  
EXISTING BRIDGE. STA. 16+75 LT.  
ELEV. 487.36

PAVEMENT REMOVAL  
182 SQ. YD.



DRAWN BY: LAG  
CHECKED BY: JKC

CAD/.DWG: PP-1350-1950  
DATE: 05/07

REVISIONS	
DATE	BY

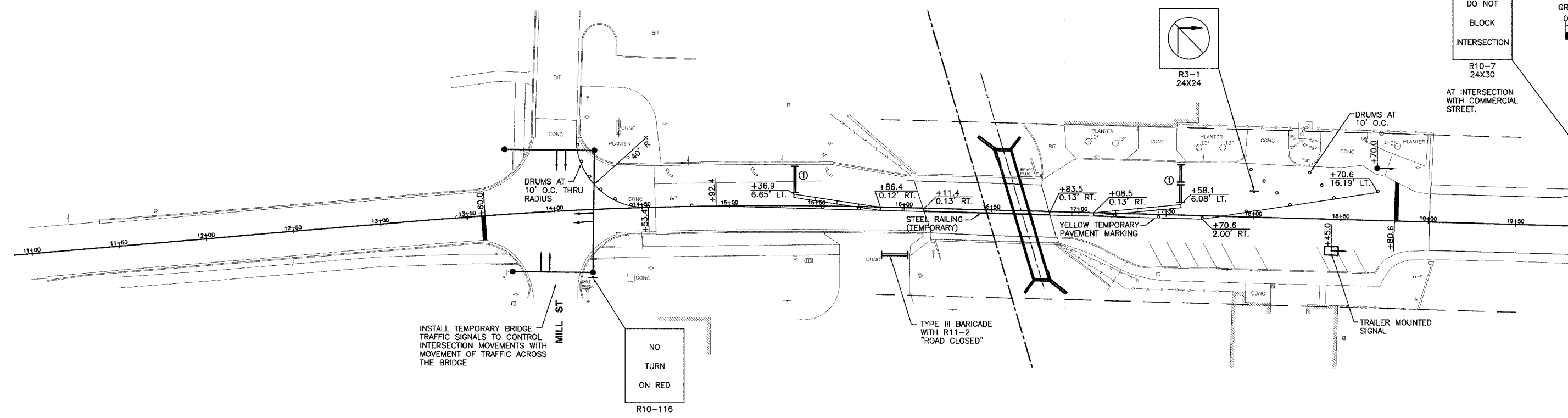
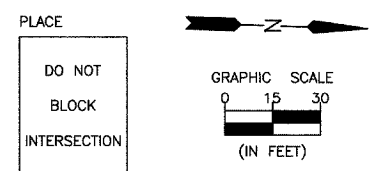


PERU MORRIS  
ILLINOIS

**FAS ROUTE 268 (CH 15) MAIN ST. OVER SOUTH MILL RACE**  
**SECTION 07-00644-00-BR**  
**LASALLE COUNTY**

**PLAN AND PROFILE**

SCALE: AS NOTED  
SHEET 5  
FILE NO.: 11670.00Y-1 OF 13



INSTALL TEMPORARY BRIDGE TRAFFIC SIGNALS TO CONTROL INTERSECTION MOVEMENTS WITH MOVEMENT OF TRAFFIC ACROSS THE BRIDGE

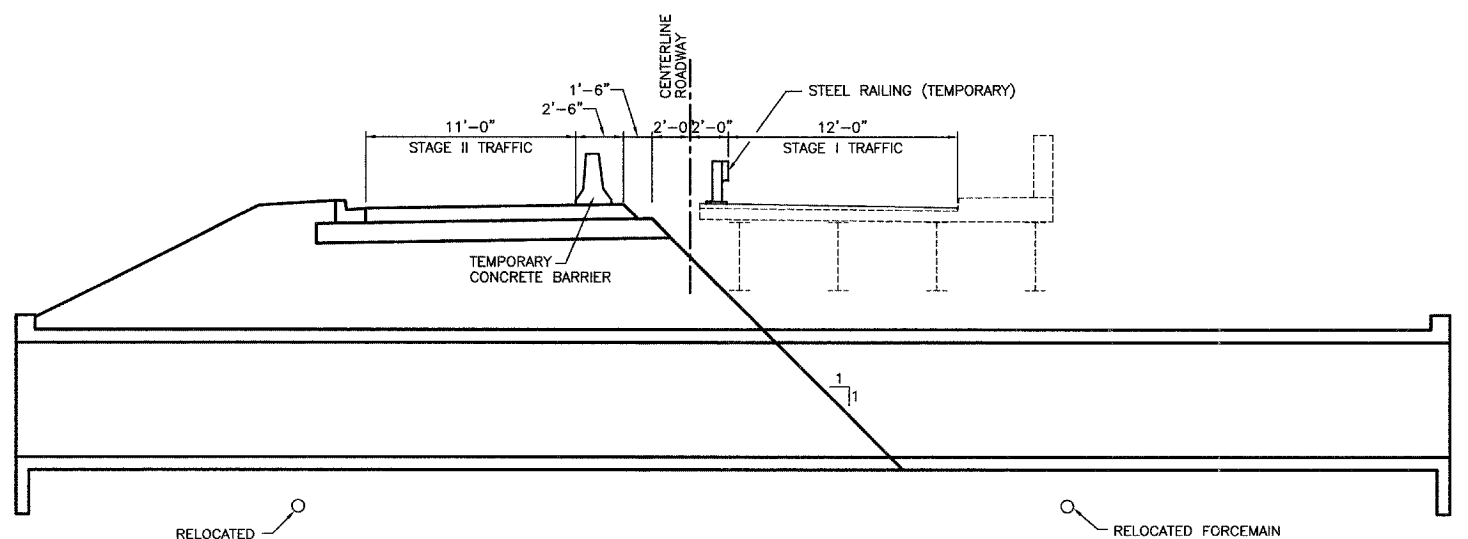
MILL ST

NO TURN ON RED

R10-116

**STAGE I TRAFFIC CONTROL**

- - DRUMS AT 25' O.C. (UNLESS NOTED OTHERWISE)
- ▬ - TEMPORARY CONCRETE BARRIER
- ① - TYPE III BARRICADE WHEN WORKERS ARE NOT PRESENT



**STAGE CONSTRUCTION CROSS SECTION**

STEEL RAILING (TEMPORARY)	
STA. 16+11.4 TO STA. 16+83.5	72
TOTAL	72

TEMPORARY CONCRETE BARRIER	
STA. 15+36.9 TO STA. 16+11.4	75
STA. 16+83.5 TO STA. 17+58.1	75
TOTAL	150

**SEQUENCE OF WORK**

1. WITH THE EXISTING STRUCTURE REMAINING OPEN TO TRAFFIC:
  - RELOCATE EXISTING FORCEMAIN
  - RELOCATE EXISTING WATER MAIN
  - COORDINATE WITH UTILITY COMPANIES TO RELOCATE UTILITIES ATTACHED TO THE STRUCTURE
  - CONSTRUCT CAST-IN PLACE BOX CULVERT
2. SETUP STAGE I TRAFFIC CONTROL AND REMOVE WEST SIDE OF STRUCTURE
3. BACKFILL AND CONSTRUCT STAGE I PAVEMENT AND CURB & GUTTER
4. SETUP STAGE II TRAFFIC CONTROL AND DIVERT TRAFFIC TO NEW PAVEMENT
5. REMOVE REMAINDER OF THE STRUCTURE AND CONSTRUCT REMAINDER OF THE WORK
6. REMOVE STAGE II TRAFFIC CONTROL

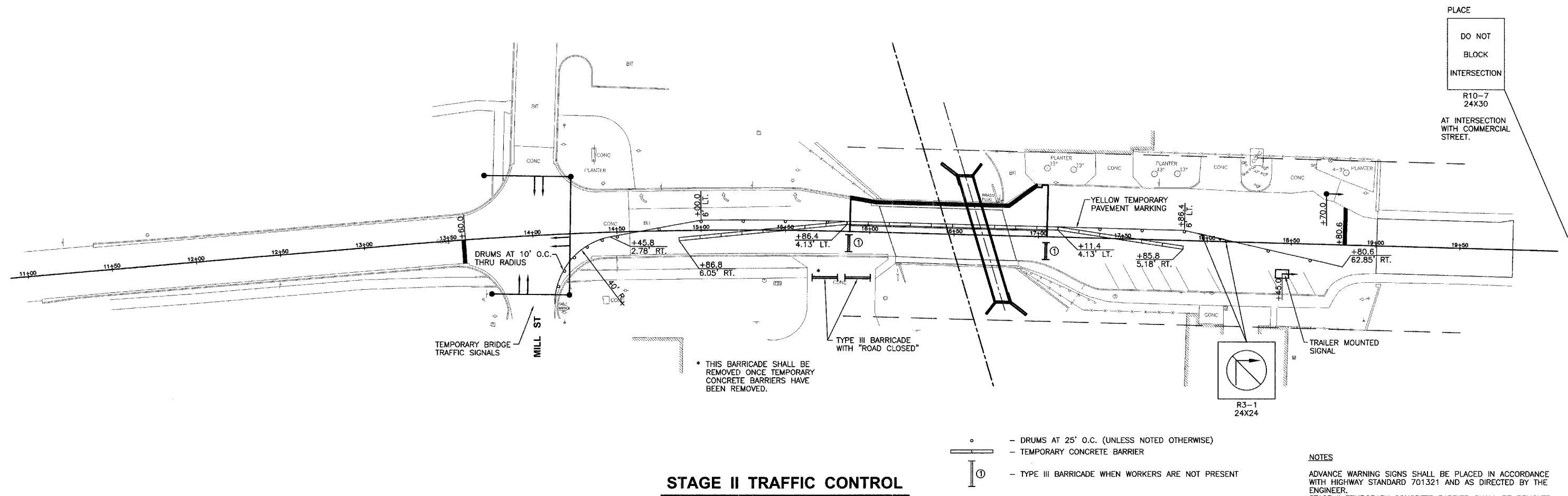
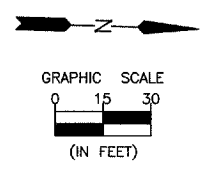
**NOTES**

ADVANCE WARNING SIGNS SHALL BE PLACED IN ACCORDANCE WITH HIGHWAY STANDARD 701321 AND AS DIRECTED BY THE ENGINEER.

DIAGONAL PARKING RIGHT OF STA. 17+50 TO STA. 18+50 SHALL BE MAINTAINED DURING STAGE I CONSTRUCTION.

WORK SHOWN ON THIS DRAWING SHALL BE CONSIDERED INCLUDED IN THE LUMP SUM COST OF TRAFFIC CONTROL AND PROTECTION, STANDARD 701321, THE EACH COST OF TEMPORARY BRIDGE TRAFFIC SIGNALS, AND THE COST PER FOOT FOR TEMPORARY CONCRETE BARRIER AND RELOCATE TEMPORARY CONCRETE BARRIER.

DURING STAGE I & II CONSTRUCTION THE EXISTING SIDEWALK SHALL BE CLOSED USING HIGHWAY STANDARD 701801 AT STA. 17+75 AND AT MILL STREET.



PLACE  
DO NOT  
BLOCK  
INTERSECTION  
R10-7  
24X30  
AT INTERSECTION  
WITH COMMERCIAL  
STREET.

**STAGE II TRAFFIC CONTROL**

- - DRUMS AT 25' O.C. (UNLESS NOTED OTHERWISE)
- ▬ - TEMPORARY CONCRETE BARRIER
- ① - TYPE III BARRICADE WHEN WORKERS ARE NOT PRESENT

**NOTES**  
ADVANCE WARNING SIGNS SHALL BE PLACED IN ACCORDANCE WITH HIGHWAY STANDARD 701321 AND AS DIRECTED BY THE ENGINEER.  
STAGE II TEMPORARY CONCRETE BARRIER SHALL BE REMOVED ONCE AGGREGATE BASE COURSE HAS BEEN PLACED. DIAGONAL PARKING RIGHT OF STA. 17+50 TO STA. 18+50 SHALL BE MAINTAINED DURING STAGE II CONSTRUCTION. WORK SHOWN ON THIS DRAWING SHALL BE CONSIDERED INCLUDED IN THE LUMP SUM COST OF TRAFFIC CONTROL AND PROTECTION, STANDARD 701321, THE EACH COST PER FOOT FOR TEMPORARY CONCRETE BARRIER AND RELOCATE TEMPORARY CONCRETE BARRIER.  
DURING STAGE I & II CONSTRUCTION THE EXISTING SIDEWALK SHALL BE CLOSED USING HIGHWAY STANDARD 701801 AT STA. 17+75 AND AT MILL STREET.

TEMPORARY CONCRETE BARRIER	
	FOOT
STA. 14+86.8 TO STA. 16+36.4	150
TOTAL	150

RELOCATE TEMPORARY CONCRETE BARRIER	
	FOOT
STA. 16+36.4 TO STA. 17+85.8	150
TOTAL	150

DRAWN BY: NV  
CHECKED BY: JKC  
CAD/.DWG: STAGE-II-PLAN  
STAGE-TOPD  
DATE: 05/07

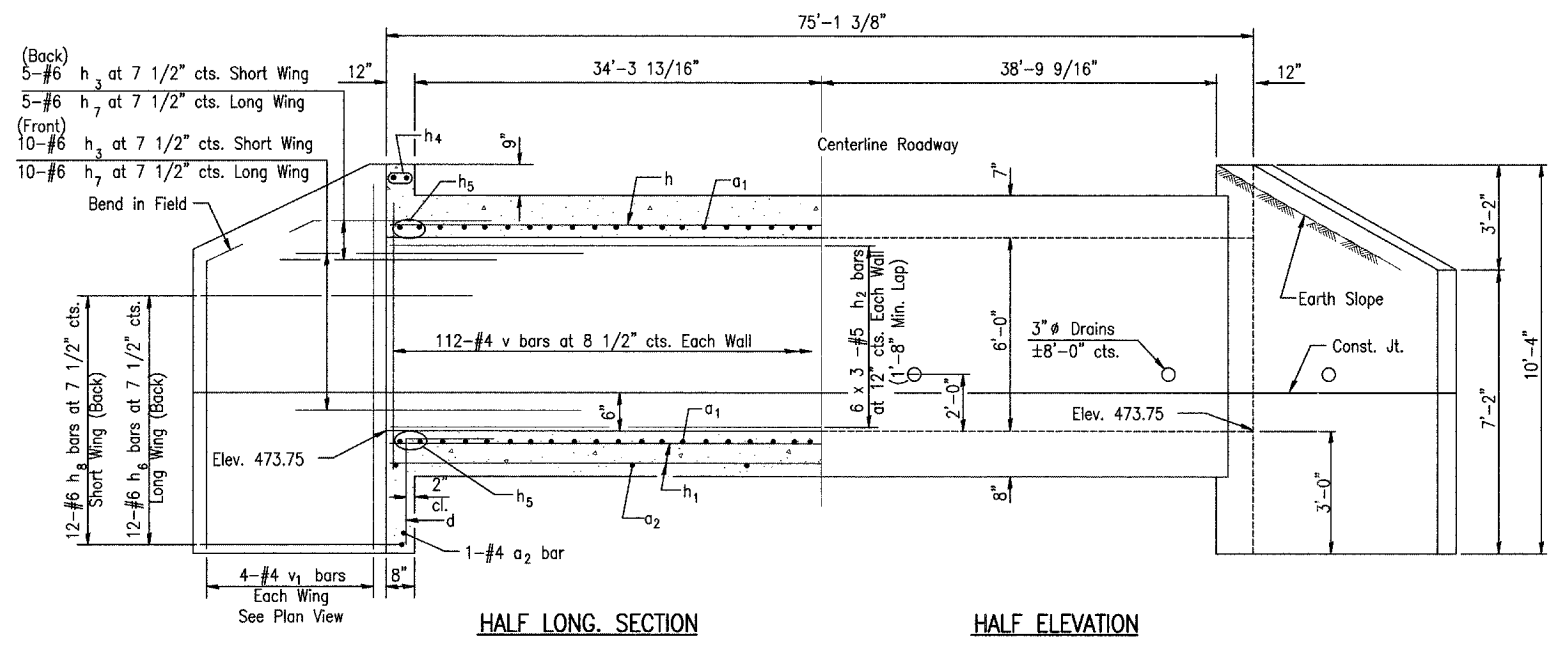
**CHAMLIN ASSOCIATES**  
PERU MORRIS ILLINOIS

**FAS ROUTE 268 (CH 15) MAIN ST. OVER SOUTH MILL RACE  
SECTION 07-00644-00-BR  
LASALLE COUNTY**

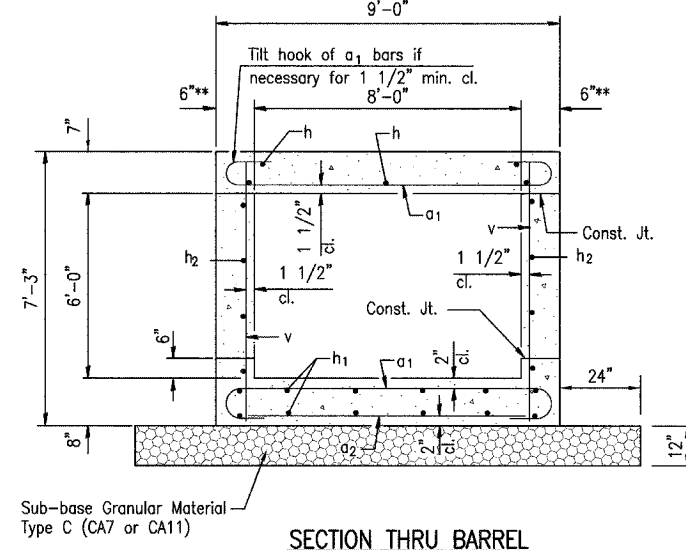
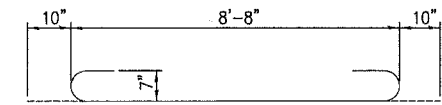
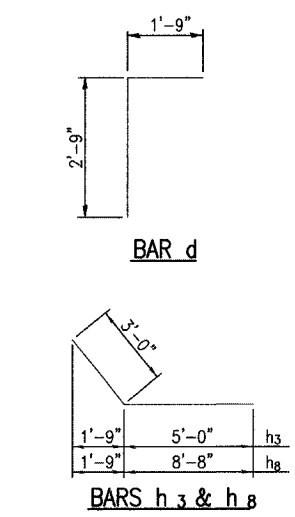
**STAGE II TRAFFIC CONTROL**

SCALE: AS NOTED  
SHEET 7  
FILE NO.: 11670.00Y-1 OF 13

\*\* Varies at each end of box.  
See plan view.



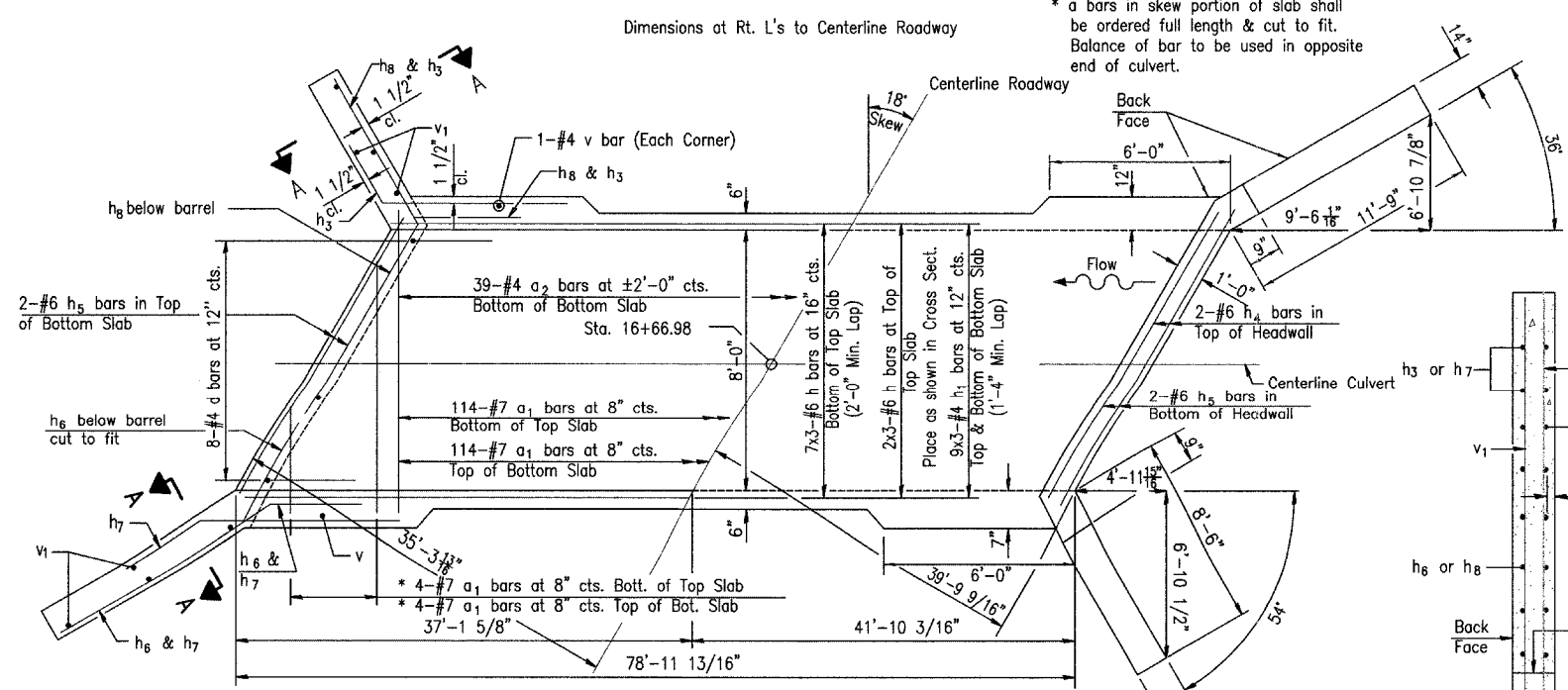
HALF LONG SECTION HALF ELEVATION



SECTION THRU BARREL BILL OF MATERIAL

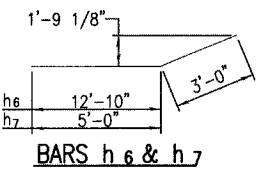
Bar	No.	Size	Length	Shape
a1	240	#7	10'-4"	U
a2	41	#4	8'-8"	—
d	16	#4	4'-6"	—
h	27	#6	27'-7"	—
h1	54	#4	27'-2"	—
h2	36	#5	27'-5"	—
h3	30	#6	8'-0"	—
h4	4	#6	9'-10"	—
h5	4	#6	9'-10"	—
h6	24	#6	15'-10"	—
h7	30	#6	8'-0"	—
h8	24	#6	11'-8"	—
h9	16	#5	4'-0"	—
v	228	#4	6'-11"	—
v1	16	#4	10'-0"	—
Concrete Box Culverts		Cu. Yd.	67	
Reinforcement Bars		Pound	11540	
Channel Excavation		Cu. Yd.	115	
Sub-base Granular Material, Type C		Ton	78	

Note  
The South Mill race has been dewatered to the extent possible by Marseilles Hydro Power LLC. Flow in the race is controlled by gates at the Illinois River. The flow in the race is due to leakage of these gates. The contractor shall be responsible for diverting the water flow from the construction area using a method meeting the approval of the Engineer.

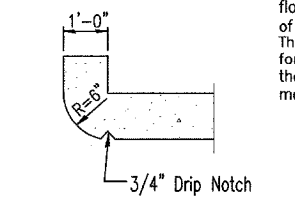


SHOWING REINFORCEMENT SHOWING OUTLINES

PLAN NOTES  
A distance of half the length of the wingwall but not less than six feet of the barrel shall be poured monolithically with the wingwalls. Reinforcement Bars shall conform to the requirements of AASHTO M-31, M-42 or M-53, Grade 60. Bars indicated thus 12 x 4-#5 etc. indicates 12 lines of bars with 4 lengths per line. All construction joints shall be bonded.



BARS h6 & h7

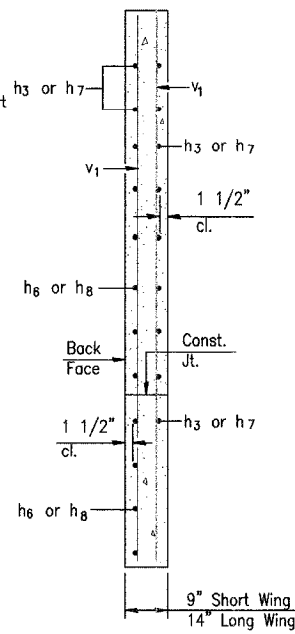


SECTION THRU HEADWALL (Up Stream End Only)

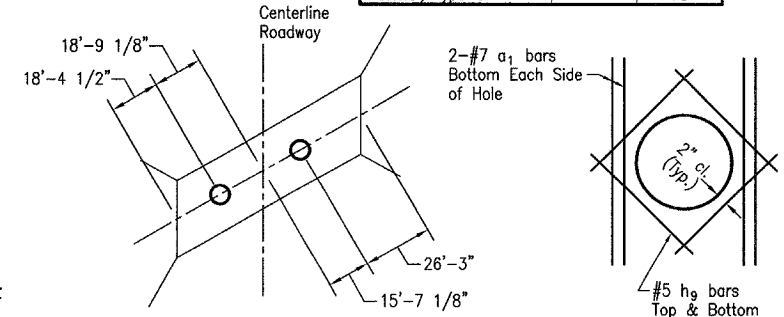
DESIGN STRESSES

fy = 60,000 psi  
f'c = 3,500 psi

LOADING HS 20-44



SECTION A-A



INLET LOCATION

HOLE REINFORCEMENT DETAIL

SSB-H-R 10-22-04

DRAWN BY: NOE/LAG	CAD/DWG: SSB-H-R	REVISIONS
CHECKED BY: JKC	DATE: 05/07	DATE BY

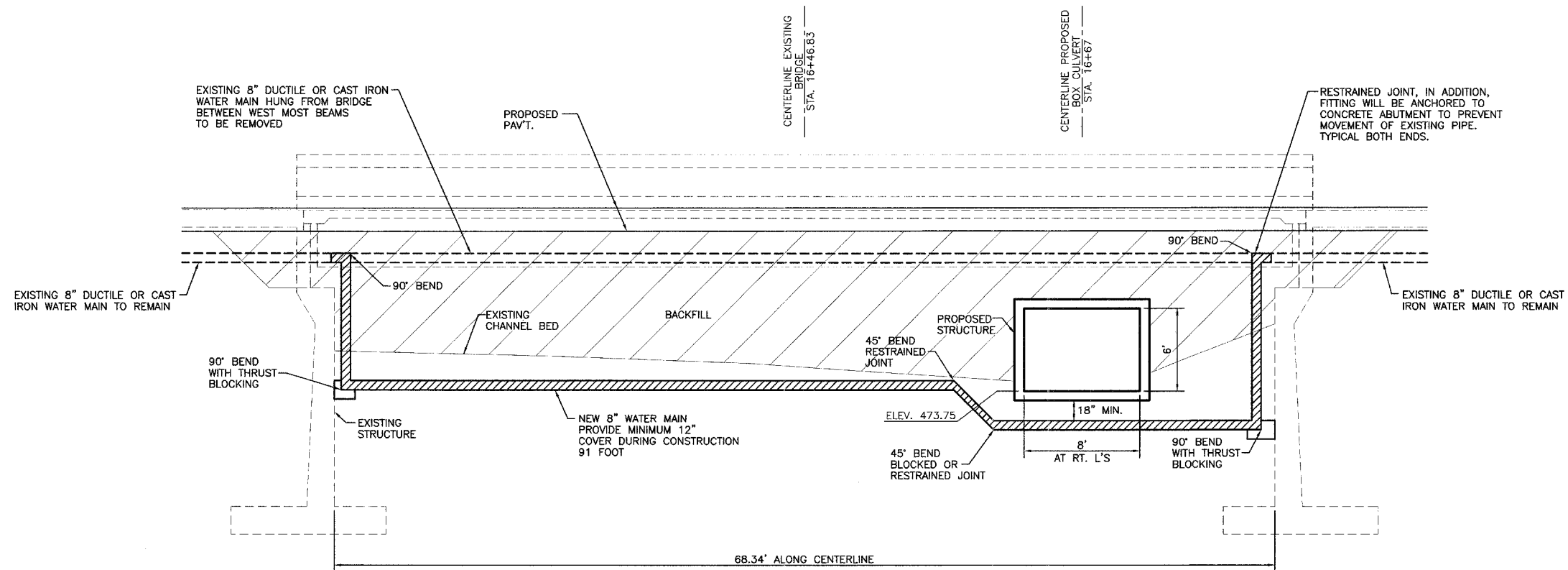
**CHAMLIN ASSOCIATES**  
PERU MORRIS ILLINOIS

FAS ROUTE 268 (CH 15) MAIN ST. OVER SOUTH MILL RACE  
SECTION 07-00644-00-BR  
LASALLE COUNTY

BOX CULVERT DETAIL

SCALE: N.T.S.	SHEET 8
FILE NO.: 11670.00Y-1	OF 13





**WATER MAIN RELOCATION DETAIL**  
(LOOKING WEST)

**NOTES:**

WORK TO CONSTRUCT THE WATER MAIN SHALL BE IN ACCORDANCE WITH THE STANDARD SPECIFICATIONS FOR WATER & SEWER MAIN CONSTRUCTION IN ILLINOIS.

WATER MAIN PIPE SHALL BE DUCTILE IRON, CEMENT LINED, MECHANICAL JOINT, CLASS 51, MEETING THE REQUIREMENTS OF ANSI/AWWA A21.51 / C-151.

WATER MAIN FITTINGS SHALL BE DUCTILE IRON, CEMENT LINED, MECHANICAL JOINT PRESSURE RATED FOR 250 PSI AND MEETING THE REQUIREMENTS OF ANSI/AWWA A21.10 / C-110 AND A21.11 / C-111.

DRAWN BY: NV  
CHECKED BY: JKC

CAD/.DWG: WMAFM-RELOCATION  
DATE: 05/07

REVISIONS	
DATE	BY



PERU MORRIS  
ILLINOIS

**FAS ROUTE 268 (CH 15) MAIN ST. OVER SOUTH MILL RACE**  
**SECTION 07-00644-00-BR**  
**LASALLE COUNTY**

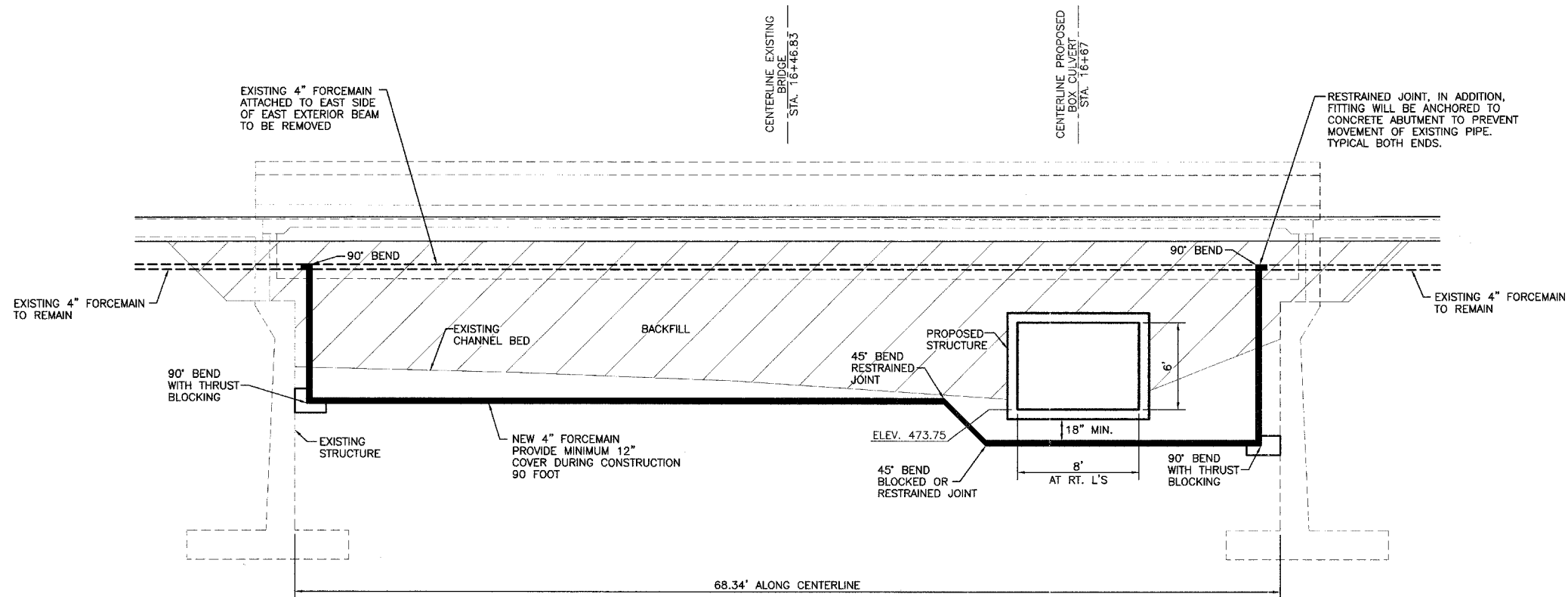
**WATER MAIN RELOCATION DETAIL**

SCALE: AS NOTED

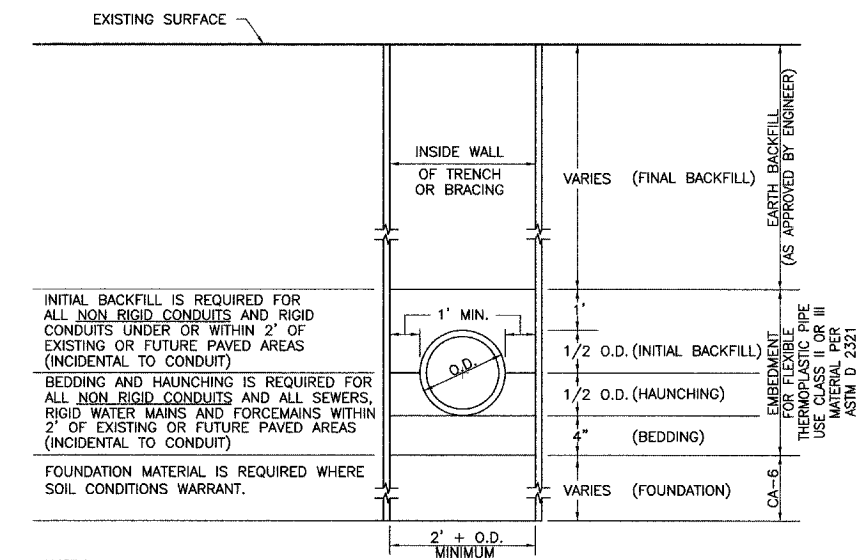
SHEET 9

FILE NO.: 11670.00Y-1

OF 13



**FORCEMAIN RELOCATION DETAIL**  
(LOOKING WEST)



INITIAL BACKFILL IS REQUIRED FOR ALL NON RIGID CONDUITS AND RIGID CONDUITS UNDER OR WITHIN 2' OF EXISTING OR FUTURE PAVED AREAS (INCIDENTAL TO CONDUIT)  
 BEDDING AND HAUNCHING IS REQUIRED FOR ALL NON RIGID CONDUITS AND ALL SEWERS, RIGID WATER MAINS AND FORCEMAINS WITHIN 2' OF EXISTING OR FUTURE PAVED AREAS (INCIDENTAL TO CONDUIT)  
 FOUNDATION MATERIAL IS REQUIRED WHERE SOIL CONDITIONS WARRANT.

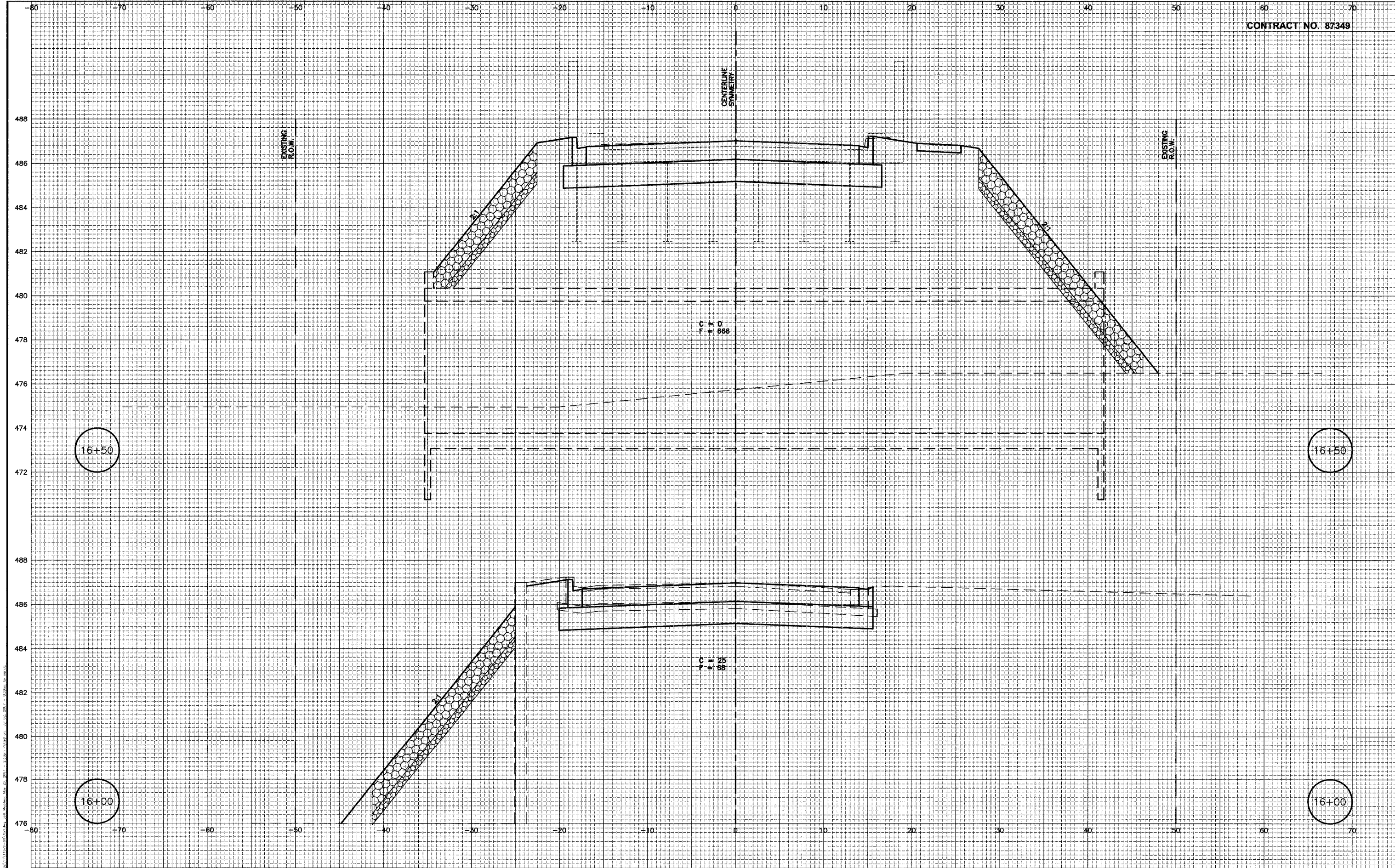
NOTES:  
 NON RIGID CONDUITS ARE DEFINED AS FLEXIBLE THERMOPLASTIC PIPE.  
 TRENCH BOX SHALL NOT EXTEND BELOW THE TOP OF THE PIPE NOR SHALL IT EXCEED 2 FEET FROM THE BOTTOM OF THE TRENCH.

**TYPICAL CONDUIT INSTALLATION DETAIL**  
N.T.S.

**NOTES:**  
 WORK TO CONSTRUCT THE FORCEMAIN SHALL BE IN ACCORDANCE WITH THE STANDARD SPECIFICATIONS FOR WATER & SEWER MAIN CONSTRUCTION IN ILLINOIS.  
 FORCEMAIN PIPE SHALL BE PVC WITH RUBBER GASKETED PUSH ON JOINTS MEETING REQUIREMENTS OF ASTM D-2241 WITH SDR OF 26. SEALS SHALL MEET ASTM F477.  
 FORCEMAIN FITTINGS SHALL BE DUCTILE IRON, CEMENT LINED, MECHANICAL JOINT PRESSURE RATED FOR 250 PSI AND MEETING THE REQUIREMENTS OF ANSI/AWWA A21.10 / C-110 AND A21.11 / C-111.

CHAMBLIN ASSOCIATES, L.L.C. 11800 S. WILSON AVENUE, SUITE 100, CHICAGO, ILLINOIS 60648-1000  
 TEL: 773.326.1000 FAX: 773.326.1001 WWW.CHAMBLINASSOCIATES.COM  
 DATE: 05/07/07

DRAWN BY: NV	CAD/.DWG: WMMFM-RELOCATION	REVISIONS			PERU MORRIS ILLINOIS	<b>FAS ROUTE 268 (CH 15) MAIN ST. OVER SOUTH MILL RACE</b> <b>SECTION 07-00644-00-BR</b> <b>LASALLE COUNTY</b>	<b>FORCEMAIN RELOCATION DETAIL</b>	SCALE: AS NOTED	SHEET 10
		DATE	BY					FILE NO.: 11670.00Y-1	OF 13
CHECKED BY: JKC	DATE: 05/07								



DRAWN BY: LAG/NV  
 CHECKED BY: JKC

CAD/.DWG: XS1  
 DATE: 05/07

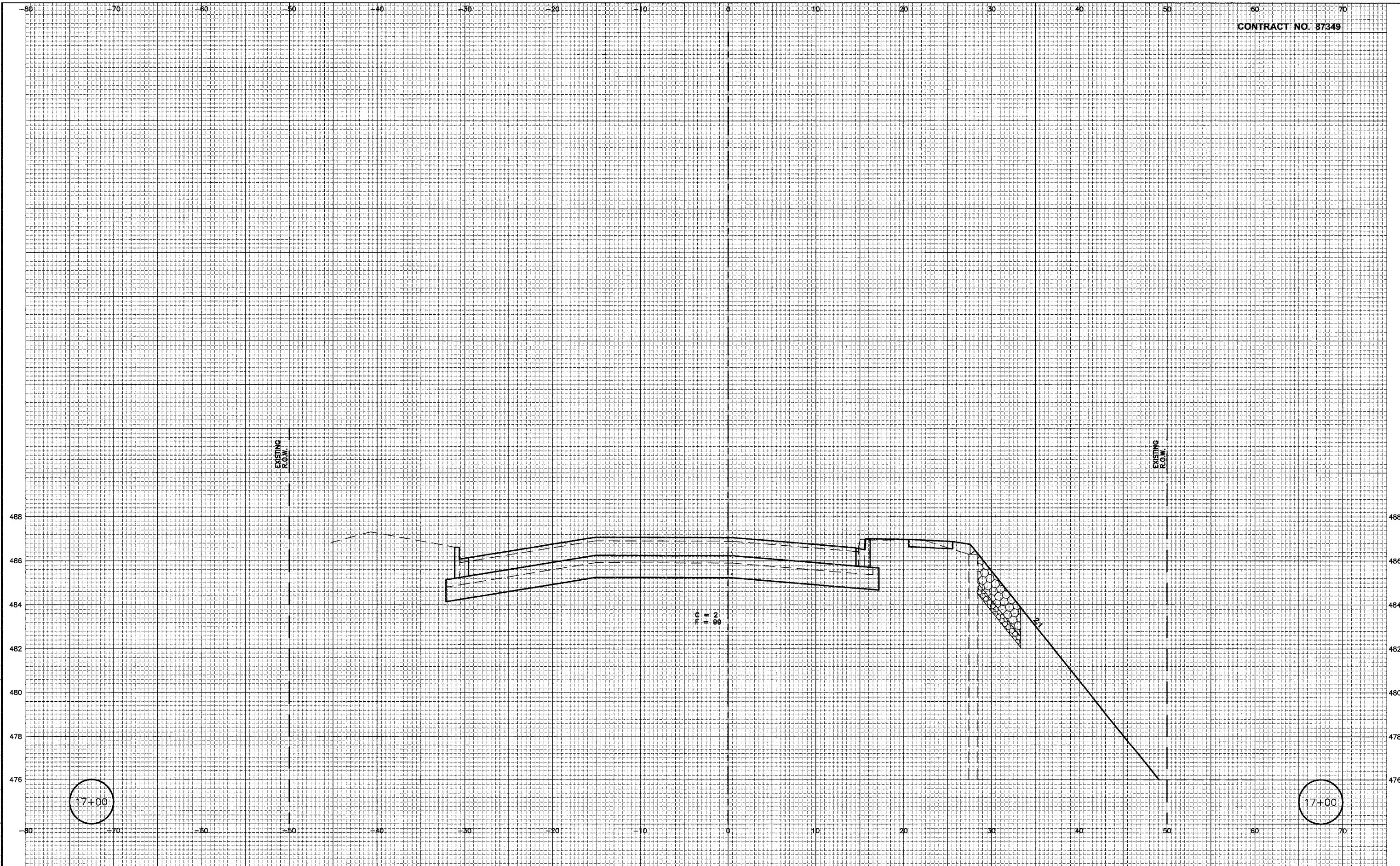
REVISIONS	
DATE	BY



PERU MORRIS  
 ILLINOIS

FAS ROUTE 268 (CH 15) MAIN ST. OVER SOUTH MILL RACE  
 SECTION 07-00644-00-BR  
 LASALLE COUNTY

CROSS SECTIONS



DRAWN BY: LAG/NV  
 CHECKED BY: JKC

CAD./DWG: XS1  
 DATE: 05/07

REVISIONS	
DATE	BY

**CHAMLIN**  
 ASSOCIATES

PERU MORRIS  
 ILLINOIS

**FAS ROUTE 268 (CH 15) MAIN ST. OVER SOUTH MILL RACE**  
**SECTION 07-00644-00-BR**  
**LASALLE COUNTY**

**CROSS SECTIONS**

SCALE: AS NOTED  
 FILE NO.: 11670.00Y-1

SHEET 12  
 OF 13

**Midwest Testing Services, Inc.**  
 3705 Progress Blvd.  
 Peru, IL 61354  
 Phone: 815-223-6696  
 Fax: 815-223-6659  
 E-Mail: Midwest@TheRamp.net

Client: Chamlin & Associates  
 Project Name: South Raceway Bridge South Main Street  
 Project Site: Marsilles, Illinois

**BORING LOG**  
 Sheet 1 of 1  
 Boring No. B-1  
 Surface Elev. 100.30  
 Auger Depth 19.50 Rotary Depth NA  
 Start Date 08/05/06 Finish Date 08/05/06

Location: 20' West of centerline of the road and  
36' north of center of bridge

(DEPTH) ELEV.	DESCRIPTION OF MATERIALS	Graphic Log	Depth in feet	SAMPLES					DRILLED BY	REMARKS
				Sample No.	Sample Type	Qu (TSF)	N Value (Blows)	Bulge / Shear		
100.30									Randy Salfanski CME-55	
99.30	Medium Brown Fine To Coarse Sand		1							
97.30		1	SS	12	8					
96.30	Loose Brown Fine To Coarse Sand		2							
95.30		2	SS	9	6					
94.30		3	SS	5						
93.30	Loose Brown And Black Sandy Loam To Sand		4							
92.30		4	SS	4						
91.30		5	SS	5						
90.30	Medium Brown And Black Sandy Loam To Sand		6							
89.30		6	SS	10						
88.30	Refusal Bedrock		7							
87.30		7	SS	10						
86.30										
85.30										
84.30										
83.30										
82.30										
81.30										
80.30										

Groundwater Data: Static water level at elevation 93.5'.  
 Comments: \*\* Assumed center of existing bridge as 100.0.

**Midwest Testing Services, Inc.**  
 3705 Progress Blvd.  
 Peru, IL 61354  
 Phone: 815-223-6696  
 Fax: 815-223-6659  
 E-Mail: Midwest@TheRamp.net

Client: Chamlin & Associates  
 Project Name: South Raceway Bridge South Main Street  
 Project Site: Marsilles, Illinois

**BORING LOG**  
 Sheet 1 of 1  
 Boring No. B-2  
 Surface Elev. 100.20  
 Auger Depth 20' Rotary Depth NA  
 Start Date 08/05/06 Finish Date 08/05/06

Location: 29' East of centerline of the road and  
33' South of center of bridge

(DEPTH) ELEV.	DESCRIPTION OF MATERIALS	Graphic Log	Depth in feet	SAMPLES					DRILLED BY	REMARKS
				Sample No.	Sample Type	Qu (TSF)	N Value (Blows)	Bulge / Shear		
100.20									Randy Salfanski CME-55	
99.20	Loose Brown Fine To Coarse Sand		1							
97.20		1	SS	6	9					
96.20		2	SS	4	11					
95.20	Medium Brown Fine Coarse Sand With Limestone Fragments		3							
94.20		3	SS	5						
93.20		4	SS	22						
92.20	Loose Brown And Black Sand		5							
91.20		5	SS	5						
90.20	Medium Brown And Black Sandy Loam To Sand		6							
89.20		6	SS	9						
88.20	Refusal Bedrock		7							
87.20		7	SS	14						
86.20										
85.20										
84.20										
83.20										
82.20										
81.20										
80.20										

Groundwater Data: Static water level at elevation 93.5'.  
 Comments: \*\* Assumed center of existing bridge as 100.0.