

ROUTE NO.	SECTION	COUNTY	TOTAL SHEETS	SHEET NO.
C.H. 22	93-00085-00-BR	HANCOCK	11	1
F.H.W.A. REG. NO. 4		ILLINOIS	PROJ. NO.	

**STATE OF ILLINOIS
DEPARTMENT OF TRANSPORTATION
DIVISION OF HIGHWAYS**

**PLANS FOR PROPOSED
HIGHWAY BRIDGE PROGRAM**

C. H. ROUTE 22
SECTION 93-00085-00-BR
HANCOCK COUNTY
PROJECT NO. BROS-067 (76)
JOB NO. C-96-215-01

INDEX OF SHEETS

SHEET NO.	TITLE
1.	COVER SHEET
2.	SUMMARY OF QUANTITIES, GENERAL NOTES, TYPICAL SECTIONS
3.	PLAN & PROFILE
4. - 6.	ROADWAY CROSS SECTIONS
7.	GENERAL PLAN & ELEVATION
8. - 10.	FOUNDATION, WING DESIGN & QUANTITIES
11.	EROSION CONTROL PLAN

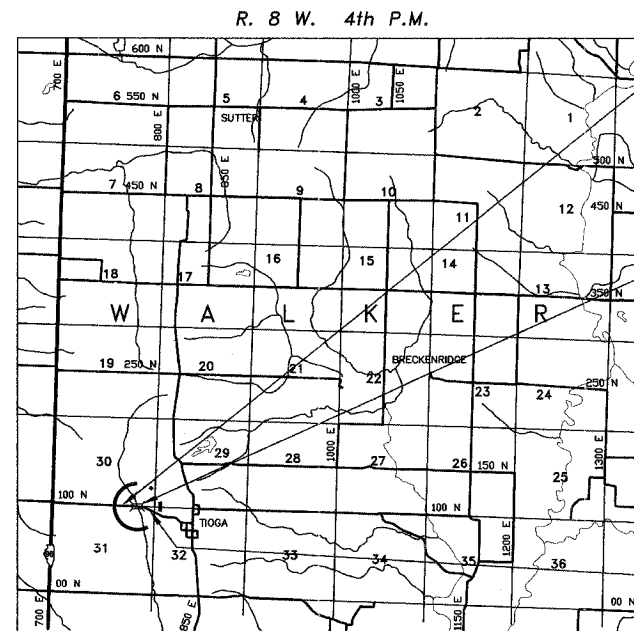
LIST OF STANDARDS

280001-03
515001-02
542301-01
630001-07
630301-04
702001-06
BLR 21-6

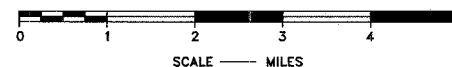
UTILITIES

NAME	ADDRESS
NICOR (N.I. GAS)	(800) 252-0883
AMEREN (C.I.P.S.)	(217) 357-3239
ADAMS TELEPHONE	(217) 696-4411

TOLL FREE JOINT UTILITY LOCATING
INFORMATION FOR EXCAVATORS (J.U.L.I.E.)
TELEPHONE NUMBER 1-800-892-0123



LOCATION MAP



NET LENGTH OF SECTION = 1488.92 FEET = 0.282 MILES

COLLECTOR
ADT = 250
DESIGN SPEED: 40 MPH

IMPROVEMENT BEGINS
STA. 44+00

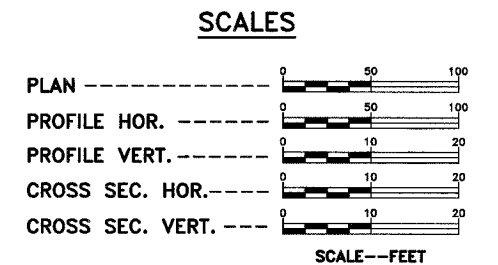
PROPOSED STRUCTURE: NO. 034-3221
3-SIDED PRC STRUCTURE 32' x 12';
102'-8" LONG ON A SLAB FOOTING,
WINGWALLS, STEEL RAILING,
TYPE S-1, 15' R.H. SKEW.
STA. 50+04

EXISTING STRUCTURE: NO. 034-3220
SINGLE SPAN STEEL I-BEAM WITH R.C.
DECK ON CLOSED TIMBER ABUTMENTS.
27' BK. TO BK. OF ABUTMENTS
22' O. TO O. OF DECK

IMPROVEMENT ENDS
STA. 58+88.92

THESE PLANS WERE PREPARED
BY ME OR BY A FULL-TIME MEMBER
OF MY STAFF WORKING UNDER
MY PERSONAL SUPERVISION.

PAUL E. SLY
COUNTY ENGINEER
ILLINOIS PROFESSIONAL NO. 062-043309
EXPIRES 11/30/2007



APPROVED: July 2 2007
COUNTY ENGINEER

PASSED: July 11 2007
DISTRICT SEVEN ENGINEER OF LOCAL ROADS & STREETS

PASSED: July 11 2007
DISTRICT SIX ENGINEER OF CONSTRUCTION

RELEASING FOR BID
BASED ON LIMITED
REVIEW: July 11 2007
DEPUTY DIRECTOR OF HIGHWAYS, REGION FOUR ENGINEER

STATE OF ILLINOIS
DEPARTMENT OF TRANSPORTATION