

SUMMARY OF QUANTITIES

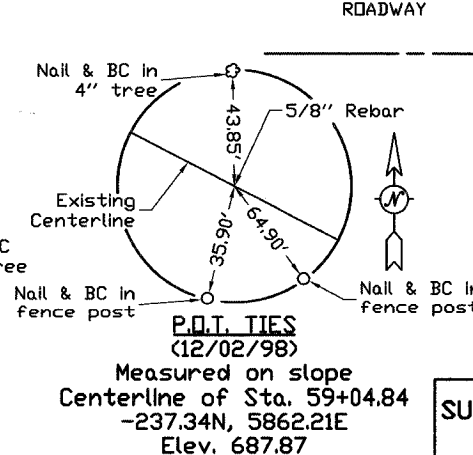
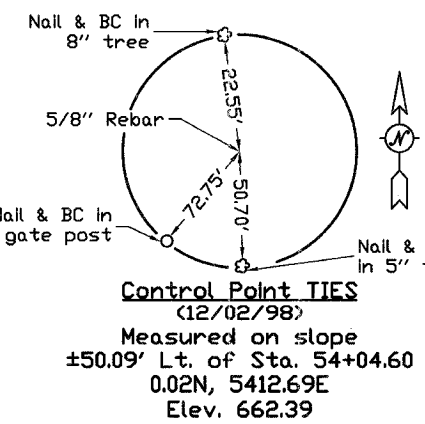
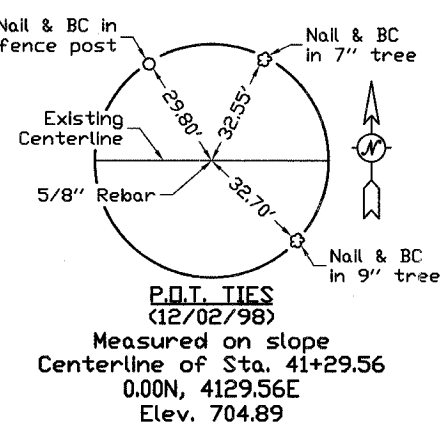
CODE NO.	ITEM	UNIT	QUANTITY
20100110	TREE REMOVAL (6 TO 15 UNITS DIAMETER)	UNIT	696
20100210	TREE REMOVAL (OVER 15 UNITS DIAMETER)	UNIT	110
20200100	EARTH EXCAVATION	CU YD	4,887
20400800	FURNISHED EXCAVATION	CU YD	12,862
28000250	TEMPORARY EROSION CONTROL SEEDING	POUND	500
28000300	TEMPORARY DITCH CHECKS	EACH	10
28000400	PERIMETER EROSION BARRIER	FOOT	3,557
35100100	AGGREGATE BASE COURSE, TYPE A	TON	1,808
* 40200800	AGGREGATE SURFACE COURSE, TYPE B	TON	200
40300300	BITUMINOUS MATERIALS (COVER AND SEAL COATS)	GALLON	2,905
40300500	COVER COAT AGGREGATE	TON	45
40300600	SEAL COAT AGGREGATE	TON	45
48100100	AGGREGATE SHOULDERS, TYPE A	TON	488
* XX007033	THREE SIDED PRECAST CONCRETE STRUCTURES, 32'x12'	FOOT	102.7
50100100	REMOVAL OF EXISTING STRUCTURES	EACH	1
50300225	CONCRETE STRUCTURES	CU YD	183.7
50800205	REINFORCEMENT BARS, EPOXY COATED	POUND	14,890
51500100	NAME PLATES	EACH	1
542D0220	PIPE CULVERTS, CLASS D TYPE 1 15"	FOOT	108
54201285	PIPE CULVERTS, TYPE 2, RCCP 30"	FOOT	96
54213675	PRECAST REINFORCED CONCRETE FLARED	EACH	2
	END SECTIONS 30"		
59300100	CONTROLLED LOW STRENGTH MATERIAL	CU YD	376.5
△ 63000000	STEEL PLATE BEAM GUARD RAIL, TYPE A	FOOT	300
△ 63100167	TRAFFIC BARRIER TERMINAL TYPE 1, SPECIAL (TANGENT)	EACH	4
67100100	MOBILIZATION	L SUM	1
70101830	TRAFFIC CONTROL AND PROTECTION, STANDARD BLR 21	L SUM	1
* 78201000	TERMINAL MARKER - DIRECT APPLIED	EACH	4
* LR355175	BITUMINOUS STABILIZED BASE COURSE	TON	1121
* LR355205	BITUMINOUS MATERIALS (PRIME COAT)	GALLON	363

* SEE SPECIAL PROVISIONS △ SPECIALTY ITEMS

CONSTRUCTION TYPE CODE: X023-2A

TREE REMOVAL SCHEDULE			
Station	Offset	6 to 15 Units Diameter	Over 15 Units Diameter
44+73	44' LT.	6	
44+80	30' RT.	6	
44+80	30' RT.	6	
44+80	30' RT.	6	
44+80	30' RT.	6	
44+84	49' LT.	8	
44+84	49' LT.	8	
44+84	49' LT.	8	
45+09	41' LT.	7	
45+17	46' LT.	6	
45+45	43' LT.	12	
45+46	38' LT.	8	
45+50	39' LT.	7	
45+68	40' LT.	10	
45+70	41' LT.	7	
45+82	41' LT.	7	
45+89	42' LT.	6	
45+99	45' LT.	6	
46+06	43' LT.	12	
46+06	44' LT.	8	
46+18	45' LT.	7	
46+24	40' LT.	13	
46+42	41' LT.	8	
46+44	45' LT.	8	
46+83	41' LT.	15	
46+86	40' LT.		16
47+07	42' LT.	6	
47+24	39' LT.	10	
47+24	39' LT.	10	
47+35	31' RT.	8	
47+51	42' LT.	8	
47+62	39' LT.	9	
47+70	33' RT.	7	
47+78	37' LT.	12	
47+91	36' RT.	13	
48+00	39' RT.	7	
48+11	42' RT.	8	
48+12	38' LT.	12	
48+18	35' RT.	15	
48+19	36' LT.	6	
48+24	42' LT.	7	
48+24	38' RT.	15	
48+29	34' LT.	10	

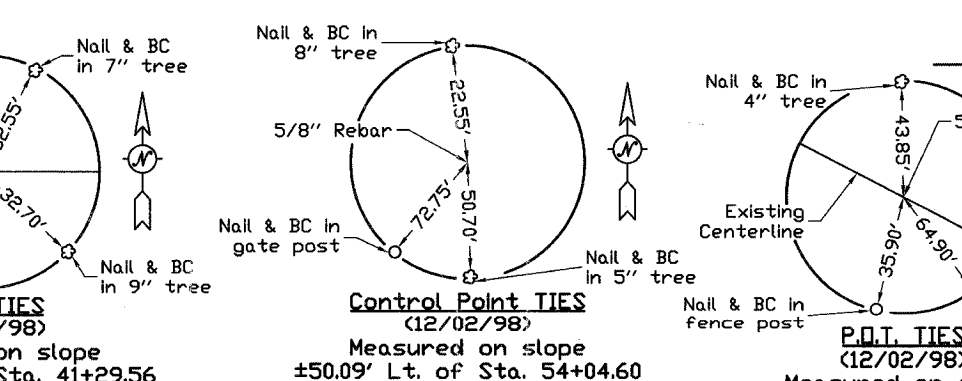
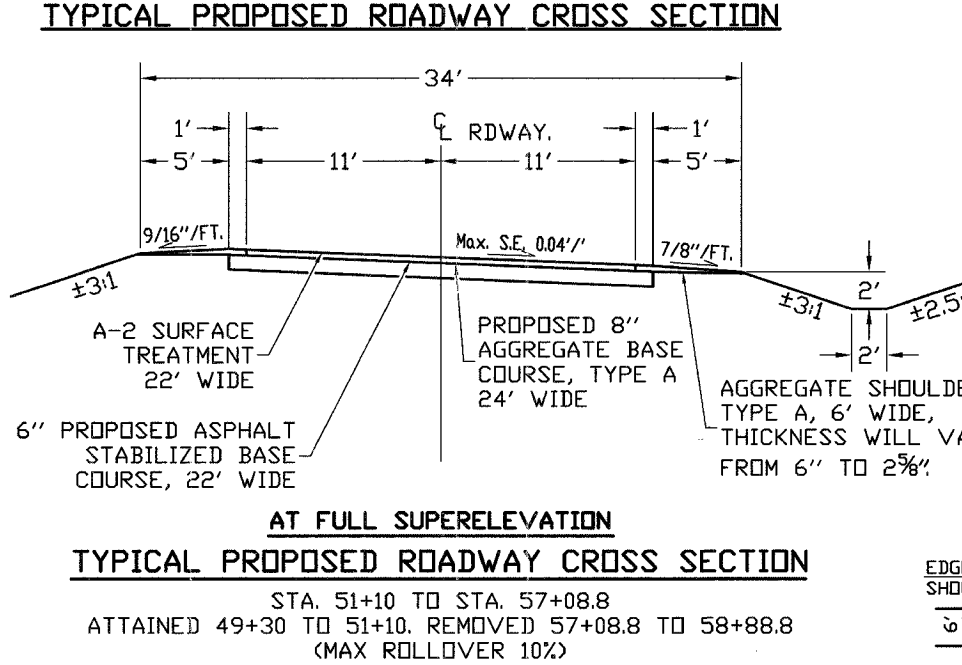
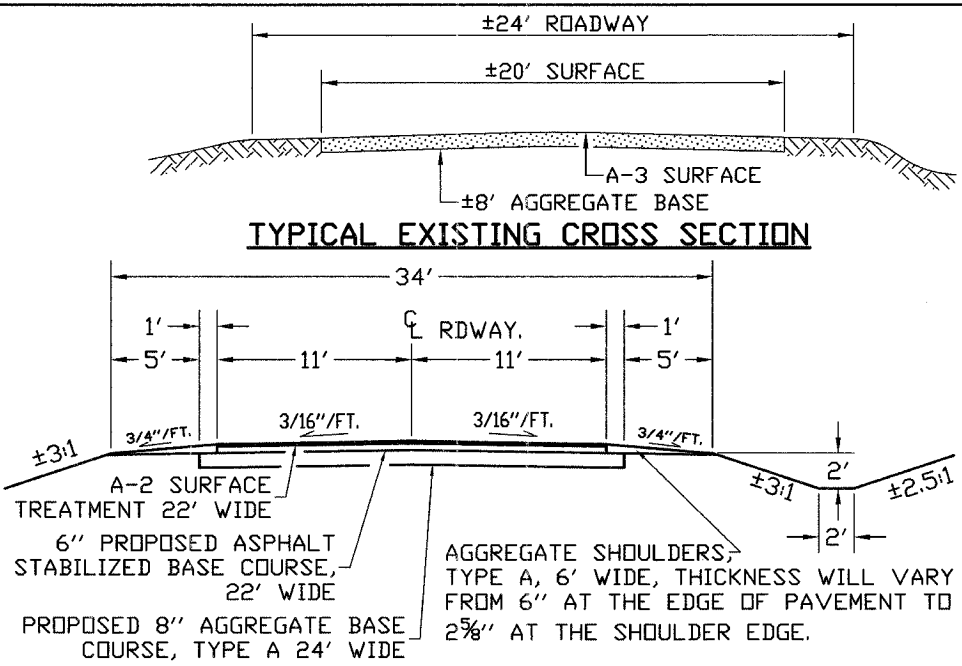
TREE REMOVAL SCHEDULE			
Station	Offset	6 to 15 Units Diameter	Over 15 Units Diameter
48+29	34' LT.	10	
48+33	43' LT.	10	
48+43	38' LT.	6	
48+43	33' RT.	6	
48+67	41' RT.	7	
48+68	35' LT.	10	
48+68	33' LT.	12	
48+69	36' LT.	7	
48+76	36' LT.	8	
48+76	36' LT.	10	16
48+80	35' RT.		
48+88	36' LT.	8	
48+90	34' LT.	6	
49+01	47' LT.	7	
49+15	43' LT.	6	
49+22	33' LT.	15	
49+27	40' LT.	15	20
49+51	36' RT.		
49+53	36' RT.	12	
49+54	36' RT.	15	
49+68	44' RT.	8	
49+71	25' RT.	6	16
49+88	55' LT.		
49+91	29' LT.	10	21
49+92	48' LT.		
50+00	49' LT.	8	
50+04	44' LT.	14	
50+25	40' RT.	13	
50+28	42' RT.	14	21
50+43	38' RT.		
51+41	55' RT.	14	
51+56	53' RT.	10	
51+79	38' LT.	7	
51+92	46' LT.	8	
52+17	48' LT.	6	
52+17	48' LT.	6	
52+22	50' LT.	12	
53+61	1' LT.	6	
57+27	29' RT.	7	
58+00	34' LT.	13	
TOTALS		696	110



APPLICATION RATES USED IN QUANTITY CALCULATIONS

GRANULAR MATERIALS	2.05	TON / CU. YD.
BITUMINOUS MATERIALS (PRIME COAT)	0.10	GALLON / SQ. YD.
BITUMINOUS MATERIALS (SEAL COAT)	0.40	GALLON / SQ. YD.
SEAL COAT AGGREGATE	25.0	LBS. / SQ. YD.
ASPHALT STABILIZED BASE COURSE	103.0	LBS. / SQ. YD. / INCH

NOTE: THE APPLICATION RATES ARE FOR QUANTITY CALCULATIONS ONLY. THE APPLICATION RATE TO BE APPLIED WILL BE DETERMINED BY THE ENGINEER AT THE TIME OF PLACEMENT.



TRAFFIC BARRIER TERMINALS & STEEL PLATE BEAM GUARDRAIL

EASTBOUND TERMINAL WILL START (FIRST POST) AT 48+42 INSTALL TRAF. BAR. TERM., 150' S.P.B.G.R. & TRAF. BAR. TERM. TRAFFIC SIDE OF EXTRUDER HEAD AND FACE OF S.P.B.G.R. TO BE 15' RIGHT OF CENTERLINE.

WESTBOUND TERMINALS WILL START (FIRST POST) AT 48+75 LT. INSTALL TRAF. BAR. TERM., 150' S.P.B.G.R. & TRAF. BAR. TERM. TRAFFIC SIDE OF EXTRUDER HEAD AND FACE OF S.P.B.G.R. TO BE 15' LEFT OF CENTERLINE.

GENERAL NOTES

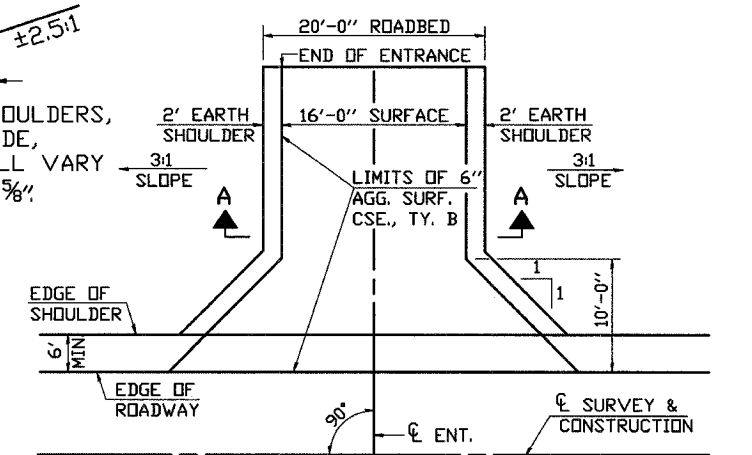
WHERE SECTION OR SUBSECTION MONUMENTS ARE ENCOUNTERED, THE ENGINEER SHALL BE NOTIFIED BEFORE SUCH MONUMENTS ARE REMOVED. THE CONTRACTOR SHALL PROTECT AND CAREFULLY PRESERVE ALL PROPERTY MARKS AND MONUMENTS UNTIL THE OWNER, AND AUTHORIZED SURVEYOR OR AGENT HAS WITNESSED OR OTHERWISE REFERENCED THEIR LOCATION.

SEEDING TO BE DONE BY OTHERS IN ACCORDANCE WITH I.D.O.T. STANDARD SPECIFICATIONS.

ROAD CLASSIFICATION: COLLECTOR ADT 0-250
TRANSITION FROM EXISTING ROADWAY TO PROPOSED ROADWAY TO BE CONSTRUCTED FROM STA. 44+00.00 TO STA. 44+50.00 AND FROM STA. 58+38.92 TO STA. 58+88.92

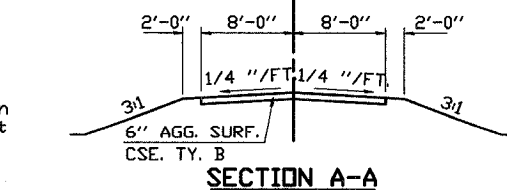
ANY EARTHWORK FROM STA. 49+59 TO 50+46 WILL BE INCIDENTAL TO THREE SIDED PRECAST CONCRETE STRUCTURES.

CHANNEL EXCAVATION: (INCIDENTAL TO THREE SIDED PRECAST CONCRETE STRUCTURES). THE CHANNEL SHALL BE EXCAVATED AS SHOWN WITHIN THE LIMITS OF THE PROPOSED STRUCTURE, THEN TAPER TO THE EXISTING CHANNEL AT THE R.O.W. LINES.



ENTRANCE DETAIL

RT. STA. 48+00.00 F.E.
LT. STA. 51+64.40 F.E.
RT. STA. 53+41.00 F.E.
LT. STA. 54+30.00 F.E.



SUMMARY OF QUANTITIES, GENERAL NOTES AND TYPICAL CROSS SECTION

SECTION 93-00085-00-BR
COUNTY HIGHWAY 22
HANCOCK COUNTY
STATION 50+04.00