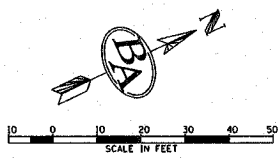


UNDERGROUND FACILITIES, STRUCTURES, AND UTILITIES HAVE BEEN PLOTTED FROM AVAILABLE SURVEYS AND RECORDS AND, THEREFORE, THEIR LOCATIONS MUST BE CONSIDERED APPROXIMATE ONLY. THERE MAY BE OTHERS THE EXISTENCE OF WHICH IS AT PRESENT NOT KNOWN. VERIFICATION OF THE LOCATIONS OF UNDERGROUND UTILITIES, SHOWN OR NOT SHOWN, WILL BE THE RESPONSIBILITY OF THE CONSTRUCTION CONTRACTOR.

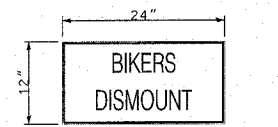
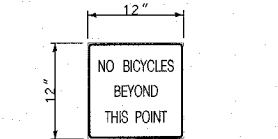
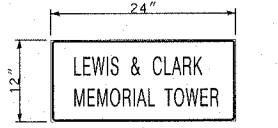
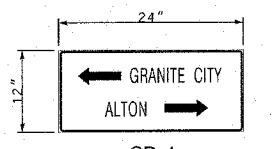
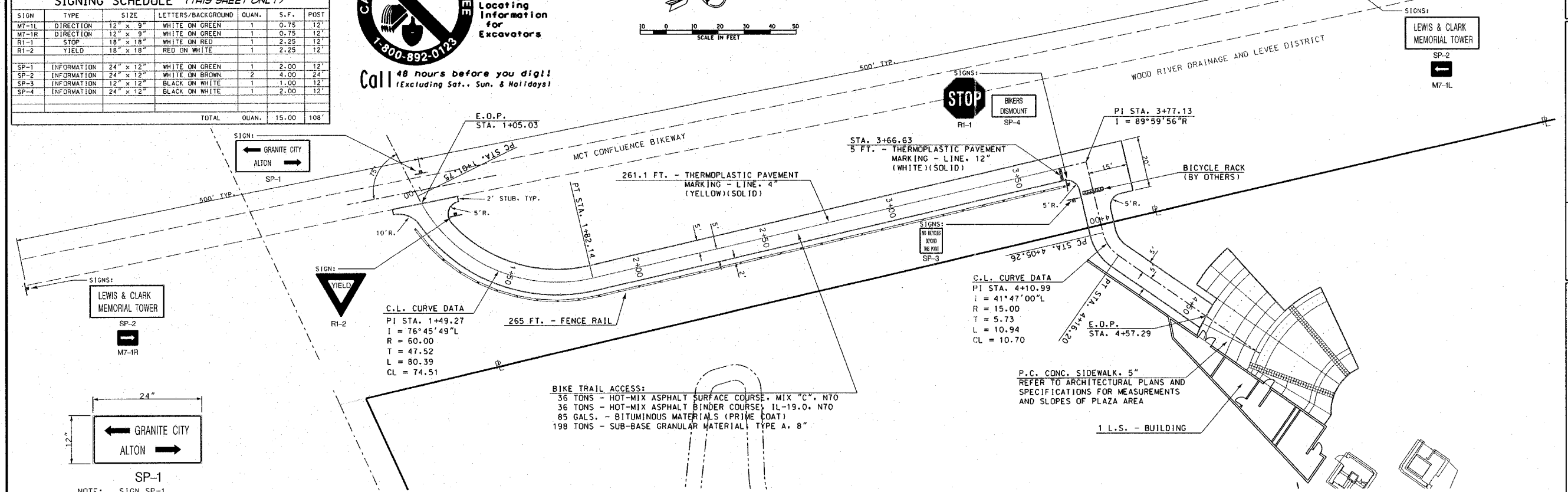
SIGNING SCHEDULE (THIS SHEET ONLY)						
SIGN	TYPE	SIZE	LETTERS/BACKGROUND	QUAN.	S.F.	POST
M7-1L	DIRECTION	12" x 9"	WHITE ON GREEN	1	0.75	12"
M7-1R	DIRECTION	12" x 9"	WHITE ON GREEN	1	0.75	12"
R1-1	STOP	18" x 18"	WHITE ON RED	1	2.25	12"
R1-2	YIELD	18" x 18"	RED ON WHITE	1	2.25	12"
SP-1	INFORMATION	24" x 12"	WHITE ON GREEN	1	2.00	12"
SP-2	INFORMATION	24" x 12"	WHITE ON BROWN	2	4.00	24"
SP-3	INFORMATION	12" x 12"	BLACK ON WHITE	1	1.00	12"
SP-4	INFORMATION	24" x 12"	BLACK ON WHITE	1	2.00	12"
TOTAL				QUAN.	15.00	108"

Call 48 hours before you dig!!
(Excluding Sat., Sun. & Holidays!)

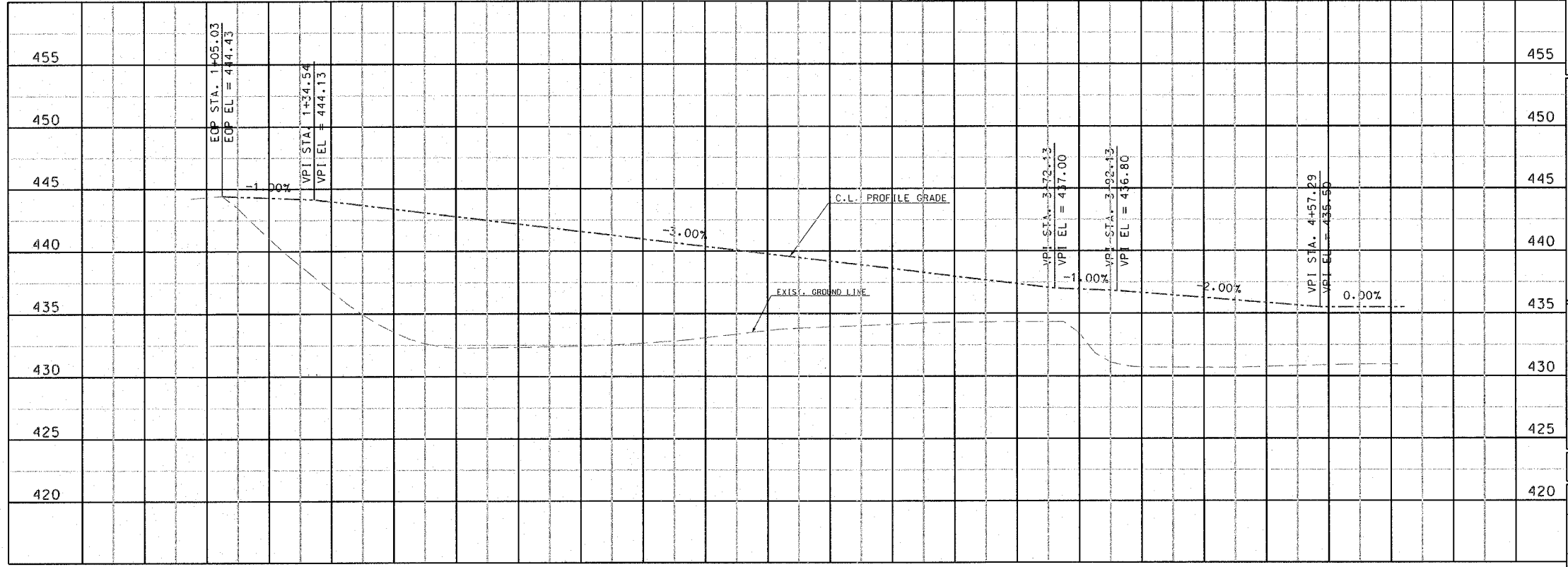


T.B.M. #1 - IRON PIN 365.1' NORTH OF CENTER OF CUL-DE-SAC AND 21.2' WEST OF CENTER LINE. ELEV. 437.18

F.A. RTE.	SECTION	COUNTY	TOTAL SHEETS	SHEET NO.
	03-00026-00-PK	MADISON	34	6



TRAFFIC CONTROL SIGNS, DETAILS
NOT TO SCALE



211 North Broadway
Suite 1900
St. Louis, Missouri 63102
Tel: 314 541-0025
Fax: 314 541-0025



PHASE 1
LEWIS AND CLARK
MEMORIAL TOWER
HARTFORD, ILLINOIS 62048

SHEET TITLE:
BIKE TRAIL ACCESS
PLAN AND PROFILE

REV. NO.	DATE	REMARKS

KENNEDY PROJECT NO
10-02048
ISSUE DATE

SHEET NO.
C1-05