

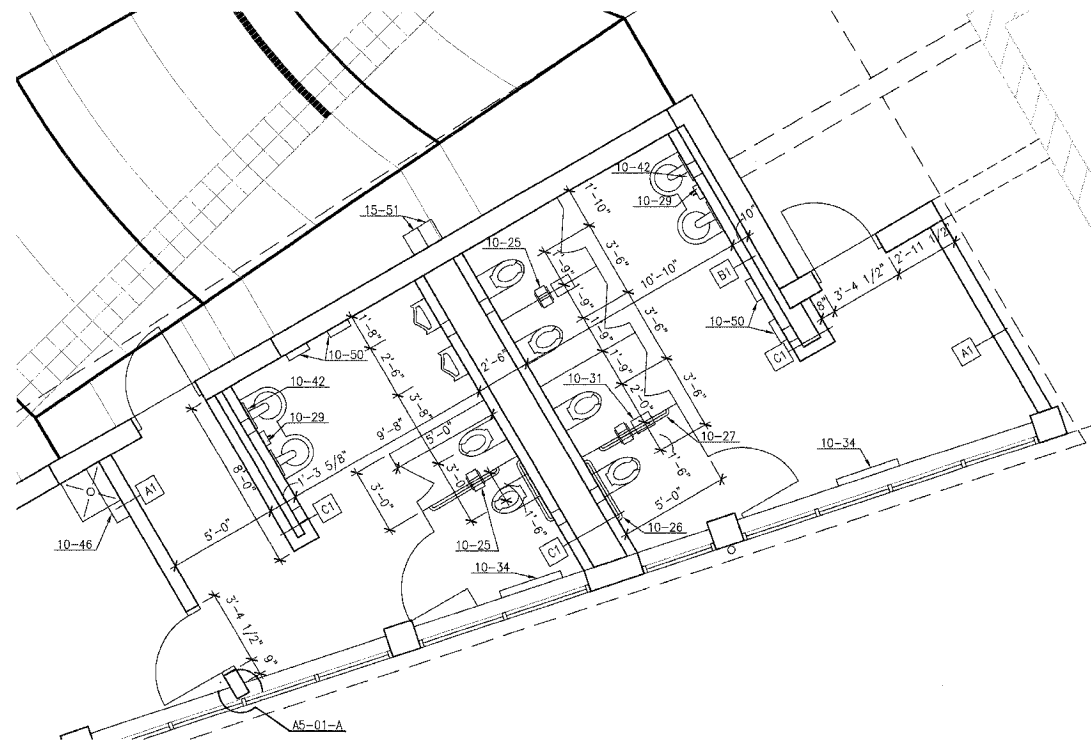
F.A. RTE.	SECTION	COUNTY	TOTAL SHEETS	SHEET NO.
	03-00026-00-PK	MADISON	38	22

FEDERAL AID PROJECT

KEYED NOTES:

- 04-63 8"x8" WALL VENTS @ 8" ABOVE FLOOR & 8" (MIN.) BELOW ROOF PANELS.
- 10-25 ACCESSIBLE TOILET TISSUE DISPENSER
- 10-26 36" GRAB BAR
- 10-27 42" GRAB BAR
- 10-29 ACCESSIBLE SOAP DISPENSER
- 10-31 ACCESSIBLE SANITARY NAPKIN DISPOSAL
- 10-34 DIAPER CHANGING TABLE
- 10-42 MIRROR
- 10-46 UTILITY SHELF WITH HOOKS
- 10-50 ELECTRIC HAND DRYER
- 15-51 DRINKING FOUNTAIN

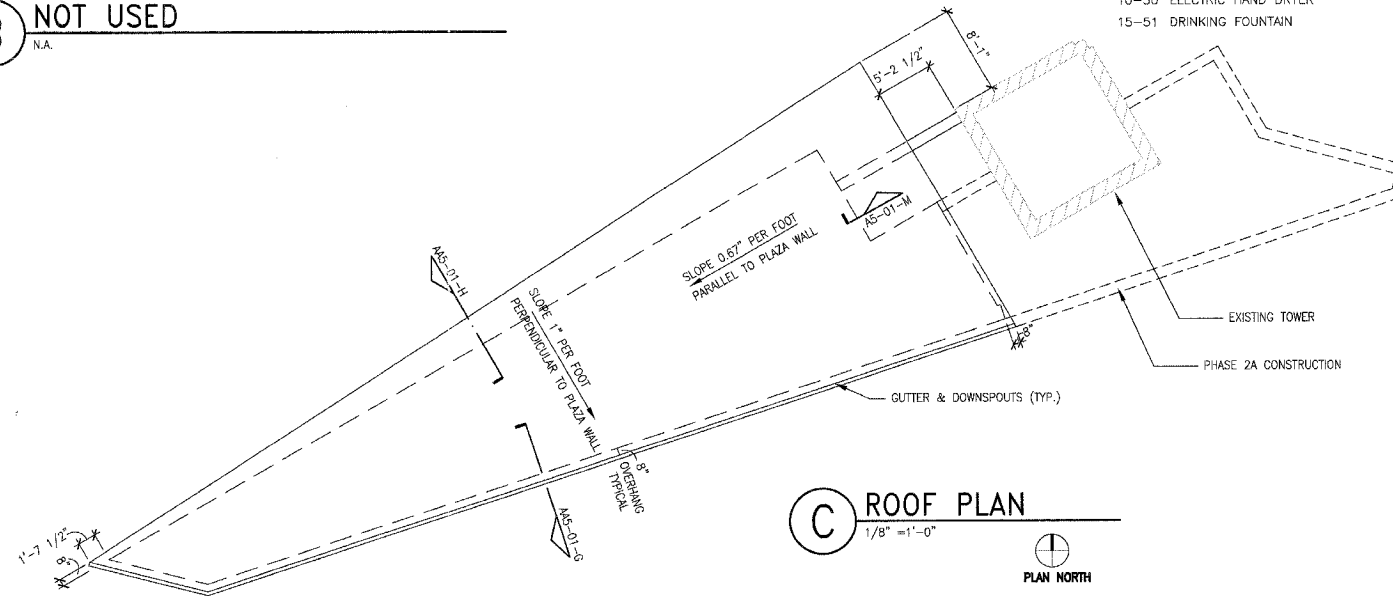
Note: Precaster is responsible for coordinating fabrication of concrete panels with location of all electrical, mechanical, and plumbing devices. Panels should be designed to include all knockouts and voids required for ductwork and junction boxes. They should also include conduit for the wiring of all such devices.



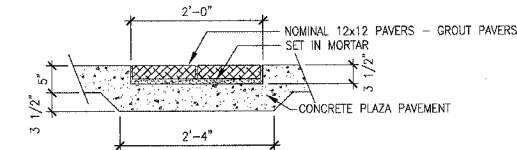
(A) ENLARGED RESTROOM PLAN
1/4" = 1'-0"



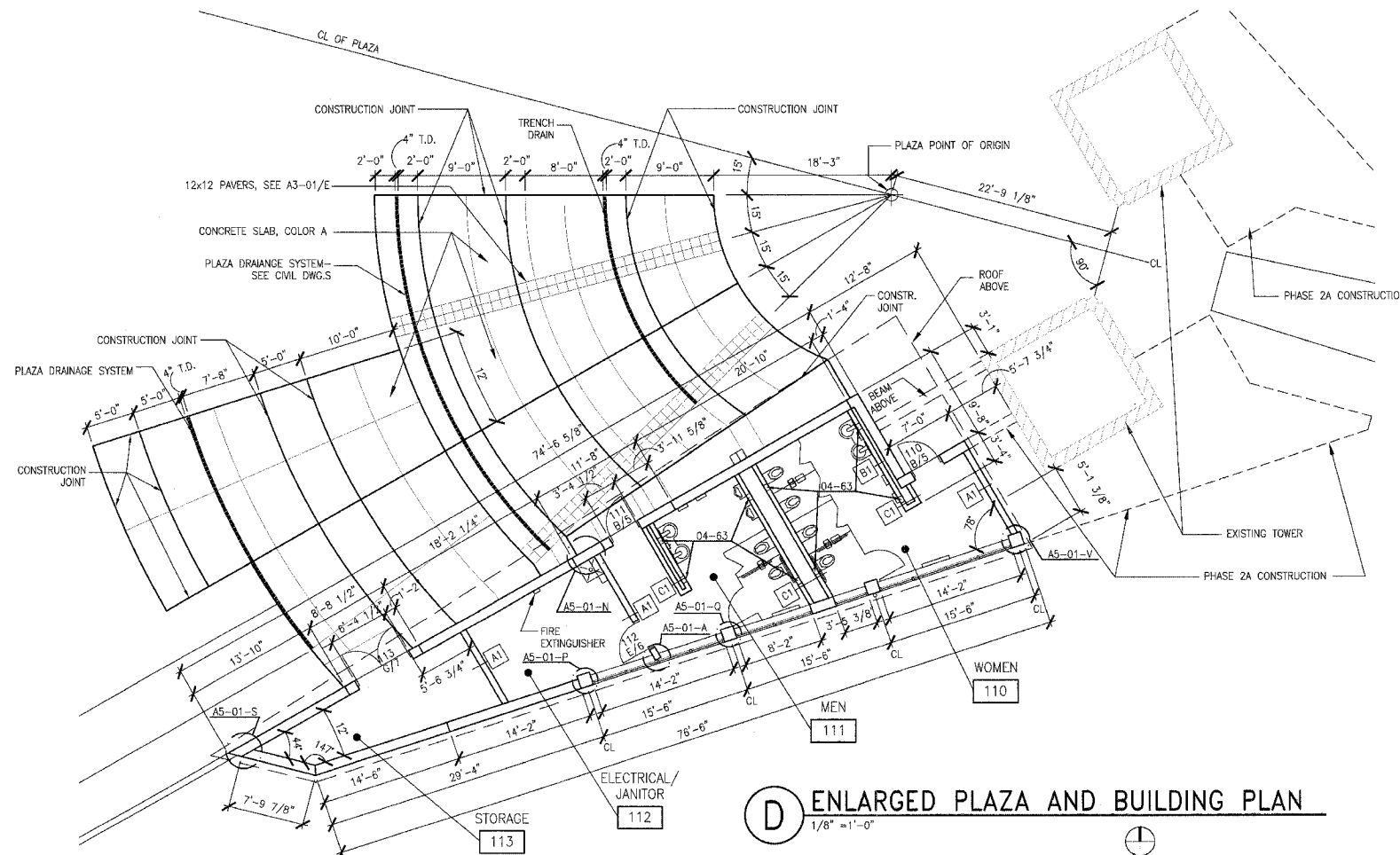
(B) NOT USED
N.A.



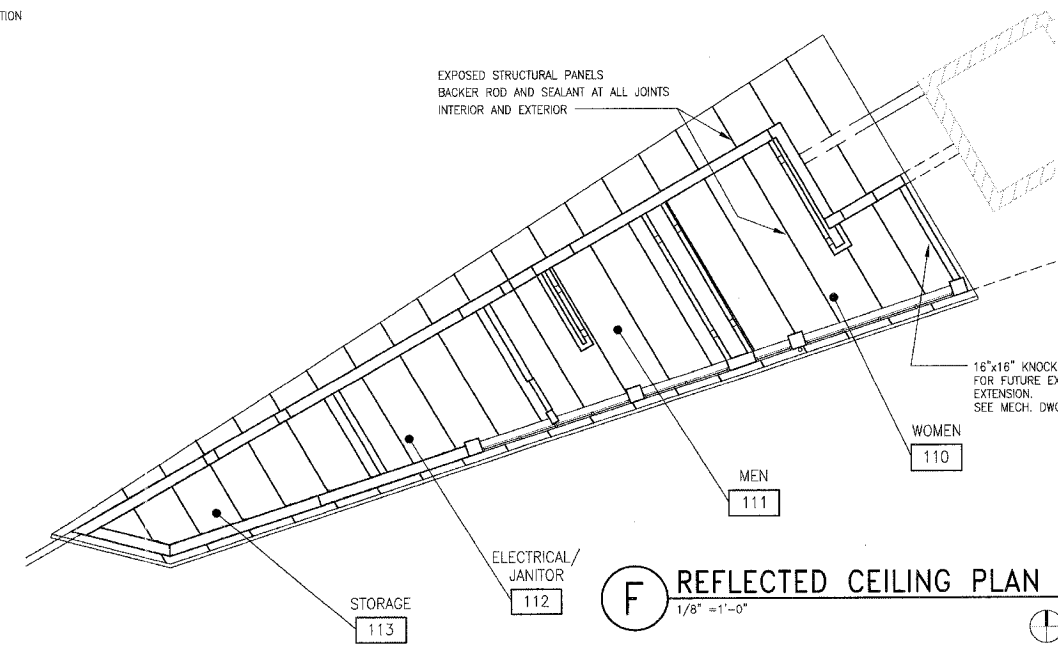
(C) ROOF PLAN
1/8" = 1'-0"



(E) PLAZA PAVING DETAIL
3/4" = 1'-0"



(D) ENLARGED PLAZA AND BUILDING PLAN
1/8" = 1'-0"



(F) REFLECTED CEILING PLAN
1/8" = 1'-0"



211 N. Broadway
Suite 1900
St. Louis, MO
63102
(314) 241-8188
FAX (314) 241-0125

KAI

**PHASE 2B
LEWIS AND CLARK MEMORIAL TOWER
VILLAGE OF HARTFORD, ILLINOIS
HARTFORD, ILLINOIS 62049**

SHEET TITLE:
**PHASE 2B FLOOR PLAN
AND ROOF PLAN**

DATE	REMARKS	REV. NO.

KENNEDY PROJECT NO
KAI# 10-02048

ISSUE DATE
12-JULY-05

SHEET NO

A3-01

© 2005 KENNEDY ASSOCIATES INCORPORATED