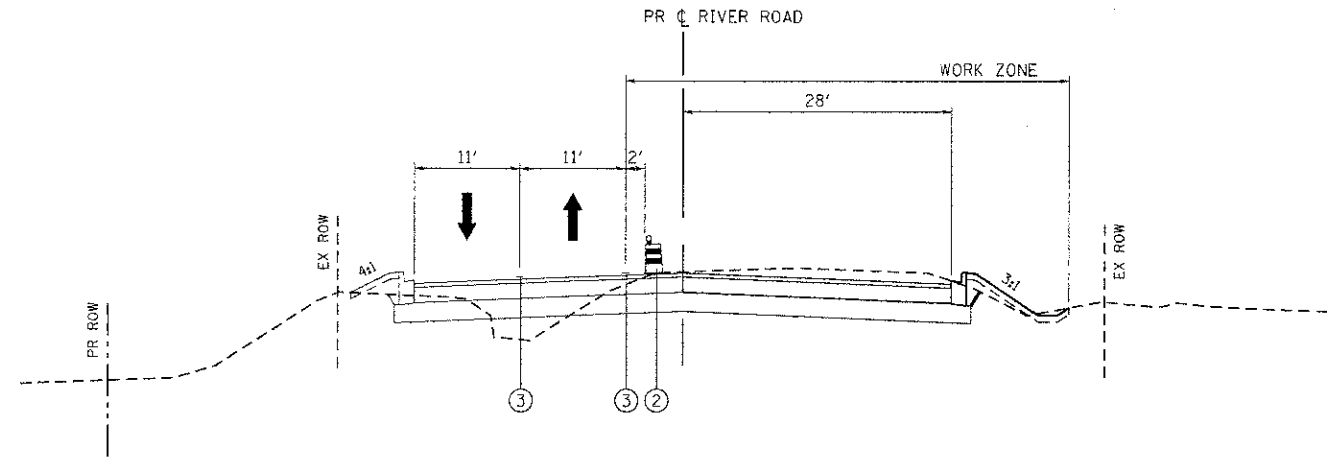
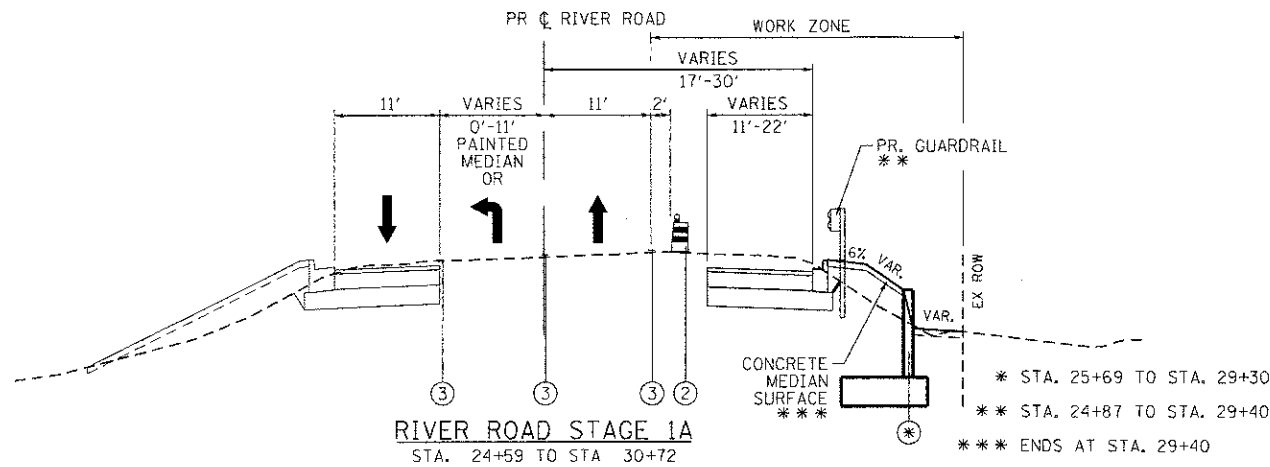


RIVER ROAD STAGE 1A
STA. 19+40 TO STA 24+59

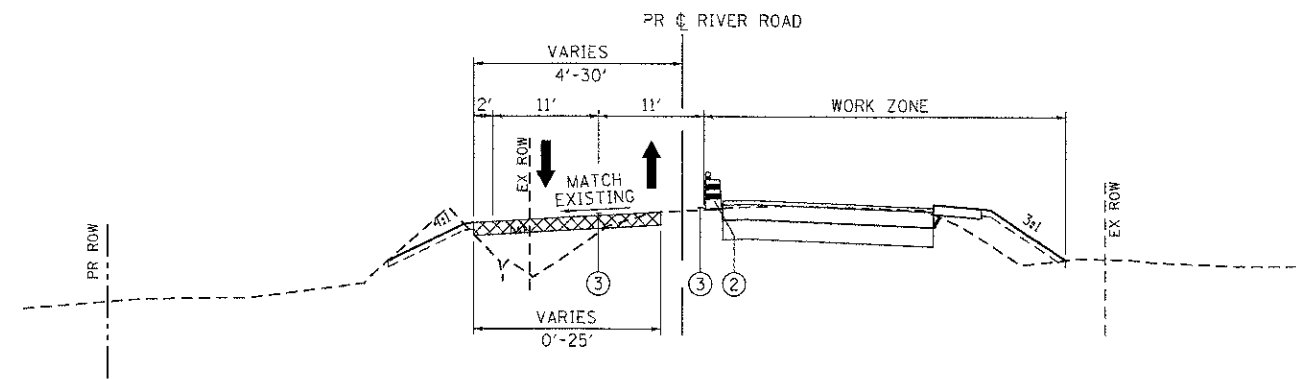


RIVER ROAD STAGE 1A
STA. 39+59 TO STA 43+00

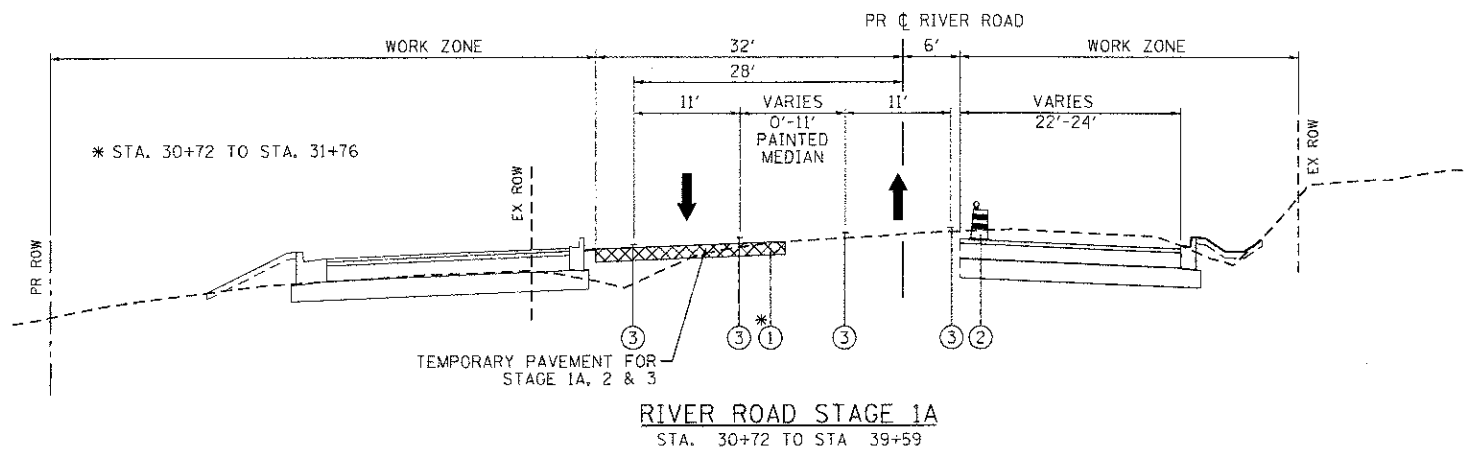


RIVER ROAD STAGE 1A
STA. 24+59 TO STA 30+72

* STA. 25+69 TO STA. 29+30
** STA. 24+87 TO STA. 29+40
*** ENDS AT STA. 29+40



RIVER ROAD STAGE 1A
STA. 43+00 TO STA 47+25



RIVER ROAD STAGE 1A
STA. 30+72 TO STA 39+59

- LEGEND:**
- ① TEMPORARY PAVEMENT, 10" (SEE NOTE 2)
 - ② TYPE II BARRICADES OR DRUMS WITH STEADY BURNING LIGHTS @ 50 FT CENTERS ALONG ROADWAY TANGENTS, 25 FT CENTERS ALONG TAPERS, AND 12 FT CENTERS ALONG RADII
 - ③ PAVEMENT MARKING TAPE, TYPE III; TEMPORARY PAVEMENT MARKING (SEE NOTE 1)
 - ④ EXISTING PAVEMENT MARKING
 - ⑤ VERTICAL PANELS WITH STEADY BURNING LIGHTS (50 FT CENTERS)
 - ➔ DIRECTION OF TRAFFIC

MAINTENANCE OF TRAFFIC NOTES:

1. SEE MAINTENANCE OF TRAFFIC PLAN SHEETS FOR LOCATIONS AND TYPE OF TEMPORARY PAVEMENT MARKING.
2. SEE MAINTENANCE OF TRAFFIC PLAN SHEETS FOR TEMPORARY PAVEMENT CONSTRUCTION STAGING.

COMPANY NAME: HRGreen
PROJECT CONTACT: J. J. J. J.
DATE PLOTTED: 7/23/2012 10:13:45 AM
FILE NAME: 090071-motgn-22.dgn
PLOT DRIVER: pcfplot
PEN TABLE: standard-trans.tbl



USER NAME = jstenna	DESIGNED - JPA	REVISED -
FILE NAME = 090071-motgn-22.dgn	DRAWN - SVJ	REVISED -
PLOT SCALE = N.T.S.	CHECKED - JLP	REVISED -
PLOT DATE = 7/23/2012	DATE - 7/23/12	REVISED -

**MCHENRY COUNTY
DIVISION OF TRANSPORTATION**

**SUGGESTED MAINTENANCE OF TRAFFIC - TYPICAL SECTIONS
CHARLES J. MILLER ROAD ROADWAY IMPROVEMENTS**

SCALE: N.T.S. SHEET NO. 9 OF 12 SHEETS STA. TO STA.

F.A.J. RTE.	SECTION	COUNTY	TOTAL SHEETS	SHEET NO.
3860	09-00372-00-PW	MCHENRY	252	31
FED. ROAD DIST. NO.			CONTRACT NO. 63633	
ILLINOIS FED. AID PROJECT				